

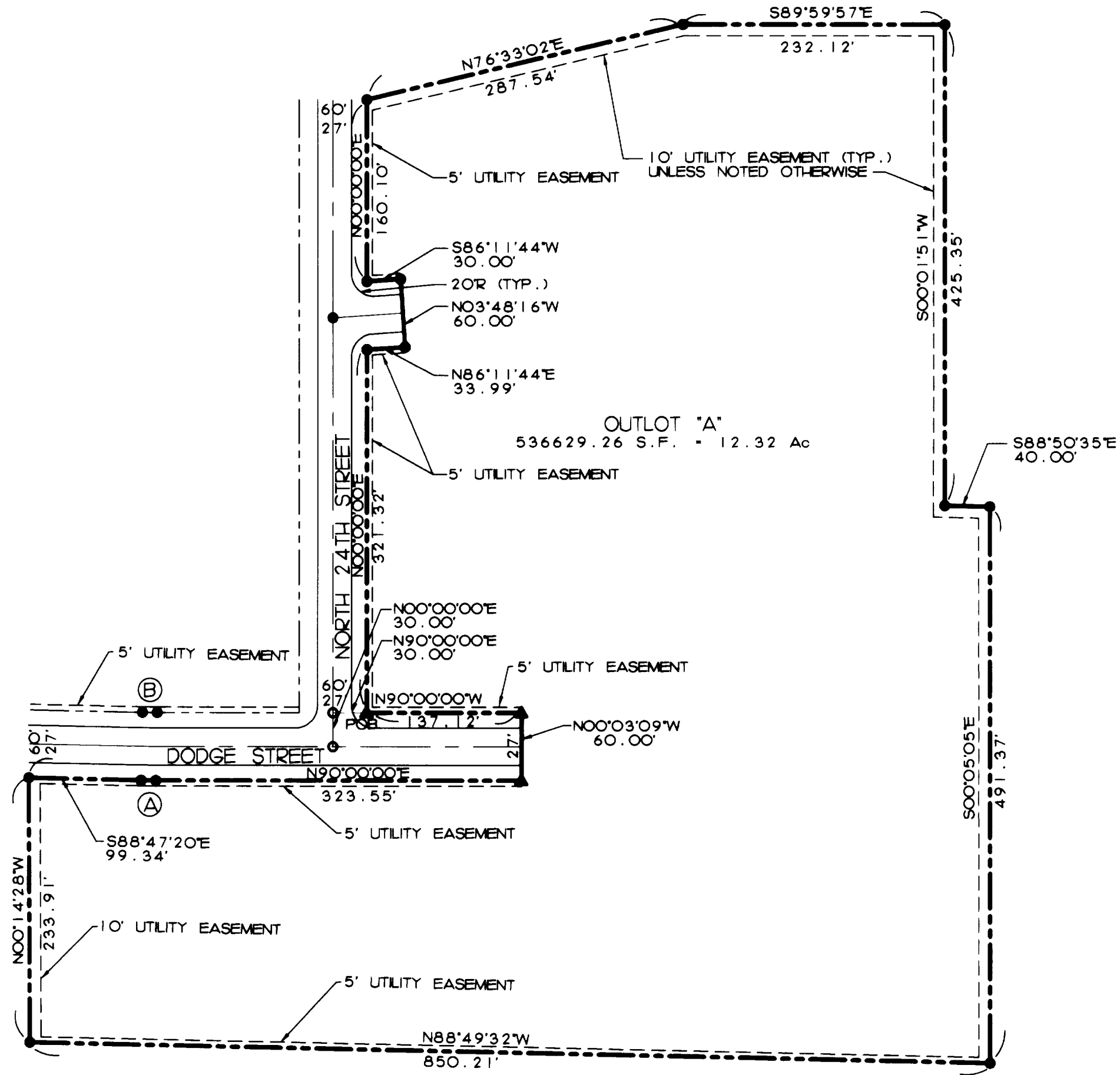
# NORTHVIEW 2ND ADDITION

## ADMINISTRATIVE FINAL PLAT

*Dan Polte*  
REGISTER OF DEEDS  
1978 AUG 14 A 8 30

**\$46<sup>00</sup>**  
INST. NO 98  
041483  
# 3266

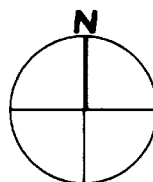
NO  
NORTHVIEW2  
ENTERED  
EDITED



**LEGEND**

- - SECTION CORNER
- ▲ - CORNER FOUND - 3/4" REBAR
- - CORNER FOUND - 5/8" REBAR
- - CORNER SET - 5/8" REBAR W/CAP
- R - RECORDED DISTANCE
- M - MEASURED DISTANCE
- P - PLAT DISTANCE

- A Δ-01°11'16" R-630.00' T-6.53' L-13.06' Ch-13.06' Ch-B-S89°24'22"E
- B Δ-01°11'14" R-630.00' T-6.53' L-13.06' Ch-13.06' Ch-B-S89°24'22"E



SCALE 1"=100.00'

# NORTHVIEW 2ND ADDITION

## ADMINISTRATIVE FINAL PLAT

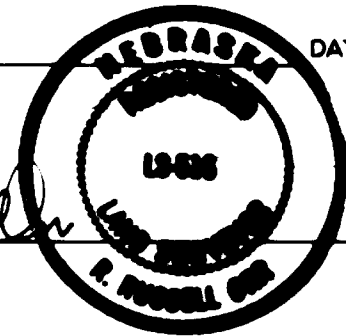
SURVEYOR'S CERTIFICATE

I HEREBY CERTIFY THAT I HAVE CAUSE TO BE SURVEYED, THE LOTS OF OUTLOT A, BLOCK 3 AND BLOCK 4, NORTHVIEW 1ST ADDITION, LINCOLN, LANCASTER COUNTY, NEBRASKA, LOCATED IN THE NORTHEAST QUARTER OF SECTION 12, TOWNSHIP 10 NORTH, RANGE 6 EAST OF THE 6TH P.M., AND MORE PARTICULARLY DESCRIBED BY METES AND BOUNDS AS FOLLOWS:

REFERRING TO THE INTERSECTION POINT OF DODGE STREET AND NORTH 24TH STREET, THENCE N00°00'00"E (AN ASSUMED BEARING), ON THE CENTERLINE OF SAID NORTH 24TH STREET, A DISTANCE OF 30.00 FEET, THENCE N90°00'00"E, A DISTANCE OF 30.00 FEET, TO THE POINT OF BEGINNING, THENCE N00°00'00"E, A DISTANCE OF 321.32 FEET, THENCE N86°11'44"E, A DISTANCE OF 33.99 FEET, THENCE N03°48'16"W, A DISTANCE OF 60.00 FEET, THENCE S86°11'44"W, A DISTANCE OF 30.00 FEET, THENCE N00°00'00"E, A DISTANCE OF 160.10 FEET, THENCE N76°33'02"E, A DISTANCE OF 287.54 FEET, THENCE S89°59'57"E, A DISTANCE OF 232.12 FEET, THENCE S00°01'51"W, A DISTANCE OF 425.35 FEET, THENCE S88°50'35"E, A DISTANCE OF 40.00 FEET, THENCE S00°05'05"E, A DISTANCE OF 491.37 FEET, THENCE N88°49'32"W, A DISTANCE OF 850.21 FEET, THENCE N00°14'28"W, A DISTANCE OF 233.91 FEET, THENCE S88°47'20"E, A DISTANCE OF 99.34 FEET TO THE POINT OF CURVATURE OF A CURVE TO THE LEFT HAVING A CENTRAL ANGLE OF 01°11'16", A RADIUS OF 630.00 FEET, AN ARC LENGTH OF 13.06 FEET, A CHORD LENGTH OF 13.06 FEET AND A CHORD BEARING S89°24'22"E, THENCE ON SAID CURVE A DISTANCE OF 13.06 FEET, TO THE POINT OF TANGENCY, THENCE N90°00'00"E, A DISTANCE OF 323.55 FEET, THENCE N00°03'09"W, A DISTANCE OF 60.00 FEET, THENCE N90°00'00"W, A DISTANCE OF 137.12 FEET TO THE POINT OF BEGINNING AND CONTAINING A CALCULATED AREA OF 12.32 ACRES.

PERMANENT MONUMENTS HAVE BEEN PLACED AT ALL LOT CORNERS AND ALL OTHER POINTS REQUIRED BY THE CITY OF LINCOLN LAND SUBDIVISION ORDINANCE, TITLE 26 OF THE LINCOLN MUNICIPAL CODE. ALL DIMENSIONS SHOWN ARE IN FEET AND DECIMALS OF A FOOT. ALL CURVE DIMENSIONS ARE CHORD DISTANCED UNLESS OTHERWISE NOTED.

SIGNED THIS 10th DAY OF August 1998.



R. Russell Orr L.S. 516  
R. RUSSELL ORR L.S. NO. 516

DEDICATION

THE FOREGOING PLAT OF NORTHVIEW 2ND ADDITION, A SUBDIVISION OF OUTLOT A, BLOCK 3 AND BLOCK 4, NORTHVIEW 1ST ADDITION, LINCOLN, LANCASTER COUNTY, NEBRASKA, LOCATED IN THE NORTHEAST QUARTER OF SECTION 12, TOWNSHIP 10 NORTH, RANGE 6 EAST OF THE 6TH P.M., AND MORE PARTICULARLY DESCRIBED IN THE SURVEYOR'S CERTIFICATE IS MADE WITH FREE CONSENT AND IN ACCORDANCE WITH THE DESIRES OF THE UNDERSIGNED, SOLE OWNER. THE UTILITY EASEMENTS SHOWN THEREON ARE HEREBY GRANTED IN PERPETUITY TO THE CITY OF LINCOLN, NEBRASKA, A MUNICIPAL CORPORATION, ALJANT COMMUNICATIONS, T.V. TRANSMISSION, INC., PEOPLES NATURAL GAS, THEIR SUCCESSORS AND ASSIGNS, TO ALLOW ENTRY FOR THE PURPOSE OF CONSTRUCTION, RECONSTRUCTION, REPLACEMENT, REPAIR, OPERATION AND MAINTENANCE OF WIRES, CABLES, CONDUITS, FIXTURES, POLES, TOWERS, PIPES AND EQUIPMENT FOR DISTRIBUTION OF ELECTRICITY, GAS, TELEPHONE, CABLE TELEVISION, WASTEWATER COLLECTORS, STORM DRAINS, WATER MAINS AND ALL APPURTENANCES THERETO, OVER, UNDER, UPON, OR UNDER ANY EASEMENTS SHOWN ON THE FOREGOING PLAT. THE CONSTRUCTION OR LOCATION OF ANY BUILDING OR STRUCTURE, EXCLUDING FENCES OVER, UPON, OR UNDER ANY EASEMENT SHOWN THEREON SHALL BE PROHIBITED.

THE CITY OF LINCOLN, ITS SUCCESSORS OR ASSIGNS ARE HEREBY HELD HARMLESS FOR THE COST OF ANY REPLACEMENT OR DAMAGE TO ANY IMPROVEMENT OR VEGETATION OVER, UPON, OR UNDER ANY EASEMENT SHOWN THEREON.

WITNESS OUR HAND THIS 10<sup>th</sup> DAY OF August 1998.

Gerald Maddox  
GERALD MADDOX, PRESIDENT, LINCOLN FEDERAL SAVINGS BANK OF AMERICA

ACKNOWLEDGEMENT OF NOTARY



STATE OF NEBRASKA SS  
COUNTY OF LANCASTER SS

ON August 10<sup>th</sup> 1998, BEFORE ME, THE UNDERSIGNED, A NOTARY PUBLIC DULY COMMISSIONED FOR AND QUALIFIED IN SAID COUNTY, PERSONALLY CAME GERALD MADDOX, KNOWN TO ME TO BE THE PRESIDENT OF LINCOLN FEDERAL SAVINGS BANK OF AMERICA, A FINANCIAL INSTITUTE, AND IDENTICAL PERSON WHO SIGNED THE FOREGOING INSTRUMENT AND ACKNOWLEDGED THE EXECUTION THEREOF TO BE HIS VOLUNTARY ACT AND DEED AS SUCH OFFICER AND THE VOLUNTARY ACT AND DEED OF SAID CORPORATION.

SIGNED THIS 10<sup>th</sup> DAY OF August 1998.

Dale E. Abel  
NOTARY PUBLIC COMMISSION EXPIRES 6-21-99

APPROVAL

THE PLANNING DIRECTOR, PURSUANT TO SECTION 26.11.015 OF THE LINCOLN MUNICIPAL CODE HEREBY APPROVES THIS ADMINISTRATIVE PLAT.

ATTEST: John Bradley August 12, 1998  
PLANNING DIRECTOR DATE