

AFFIDAVIT

STATE OF IOWA)
COUNTY OF STORY) ss

I, L. M. Clauson, being duly sworn upon my oath depose and state that I am the Deputy Chief Engineer of the Iowa State Highway Commission, and that I am acting as the custodian of the Controlled Access Records for the Chief Engineer of said Commission, and that the attached Resolution of controlled access was adopted by the Iowa State Highway Commission on the date indicated thereon, and as a result thereof, the rights of access are controlled on the property abutting the primary highways described on the attached sheet and on the map attached hereto; each of said attached documents being made a part hereof by reference.

Signed at Ames, Iowa this ___ day of ___, 1956.

[Signature]

On this ___ day of ___ A.D. 1956 before me a Notary Public in and for Story County, Iowa, personally appeared L. M. Clauson, Deputy Chief Engineer of the Iowa State Highway Commission, to me known to be the person named in and who executed the foregoing instrument, and acknowledged that he executed the same as his voluntary act and deed.

Notary Public Seal: WOODBURY COUNTY, IOWA. FILED FOR RECORD JUL 16 1956 A.M. \$4.40

Notary Public in and for Story County, Iowa

RESOLUTION

BE IT RESOLVED by the Iowa State Highway Commission: That the Commission finds, determines, and declares that for the immediate preservation of the public peace, health, and safety, and for the promotion of the general welfare, the rights of direct access to, from, and across, all the Primary Roads in Woodbury County, as set out on the attached map of said county and more specifically described in the attached listing, shall be controlled under the authority and provisions of Chapter 148, Acts of the 56th General Assembly. The Chief Engineer is hereby authorized and directed to acquire, by the exercise of eminent domain or otherwise, the necessary right of way to carry out the purposes expressed in Chapter 148 and in this resolution, and also to acquire the right of ingress and egress to control the access to said highway.

Adopted by Iowa State Highway Commission

May 2, 1956 (Date)

WOODBURY COUNTY

PROJECT	Sta.	0 + 00	to	85 + 89	MILES
NRS 404	Sta. 110	+ 00	to	246 + 36	4.2
F 254 (2)	Sta. 135	+ 13.0	to	473 + 07.8	6.4
FA 245 (2)	Sta. 172	+ 84.0	to	296 + 84.3	5.45
	Sta. 359	+ 09.0	to	533 + 13.0	
F 168	Sta. 0	+ 00	to	3 + 06	7.3
	Sta. 59	+ 32	to	328 + 26	
	Sta. 362	+ 31.4	to	422 + 68	
F 162 (2)	Sta. 15	+ 60.0	to	221 + 32.0	3.9
PR 367	Sta. 0	+ 00	to	403 + 85.6	7.7
FA 136	Sta. 145	+ 53	to	545 + 60	7.0
FA 78	Sta. 0	+ 00	to	145 + 63	2.7
2 (10) (On U.S. 20)	Sta. 419	+ 77.0	to	1027 + 62.5	12.9
	Sta. 4027	+ 62.5	to	4104 + 99.0	
	Sta. 2820	+ 53.6	to	2821 + 91.6	
F2 Amend G	Sta. 773	+ 01.3	to	905 + 19.1	4.4
F2	Sta. 200	+ 00	to	961 + 54.2	14.4
DA WR 5	Sta. 2000	+ 00	to	2027 + 18.8	1.3
	Sta. 1000	+ 00	to	1041 + 53.2	
P 911	Sta. 998	+ 19.9	to	1060 + 10.1	1.8
	Sta. 738	+ 34.1	to	773 + 01.3	
F 453 (2)	Sta. 23	+ 47.7	to	312 + 43.1	5.5
F 744 (4)	Sta. 41	+ 10.0	to	279 + 98.5	4.5
FA 2 on Ia. 141	Sta. 0	+ 00	to	1516 + 82.8	29.7
	Sta. 1563	+ 54.8	to	1549 + 16.9	

(On Iowa #140)
 No plans from U. S. B. 75 to Hornick #141
 No plans N. Limits Hornick to Jct. (1000 + 11 - F 969(2))
 No plans Jct. 141 to Climbing Hill to 1161 + 58.9
 F 969 (2) Sta. 1000 + 11 to 1161 + 58.9 998 + 19.9
 No plans from Sta. 1161 + 58.9 (F 969(2)) to Sta. 998 + 19.9 (P-911)

144.3

3

RESOLUTION

BE IT RESOLVED by the Iowa State Highway Commission:

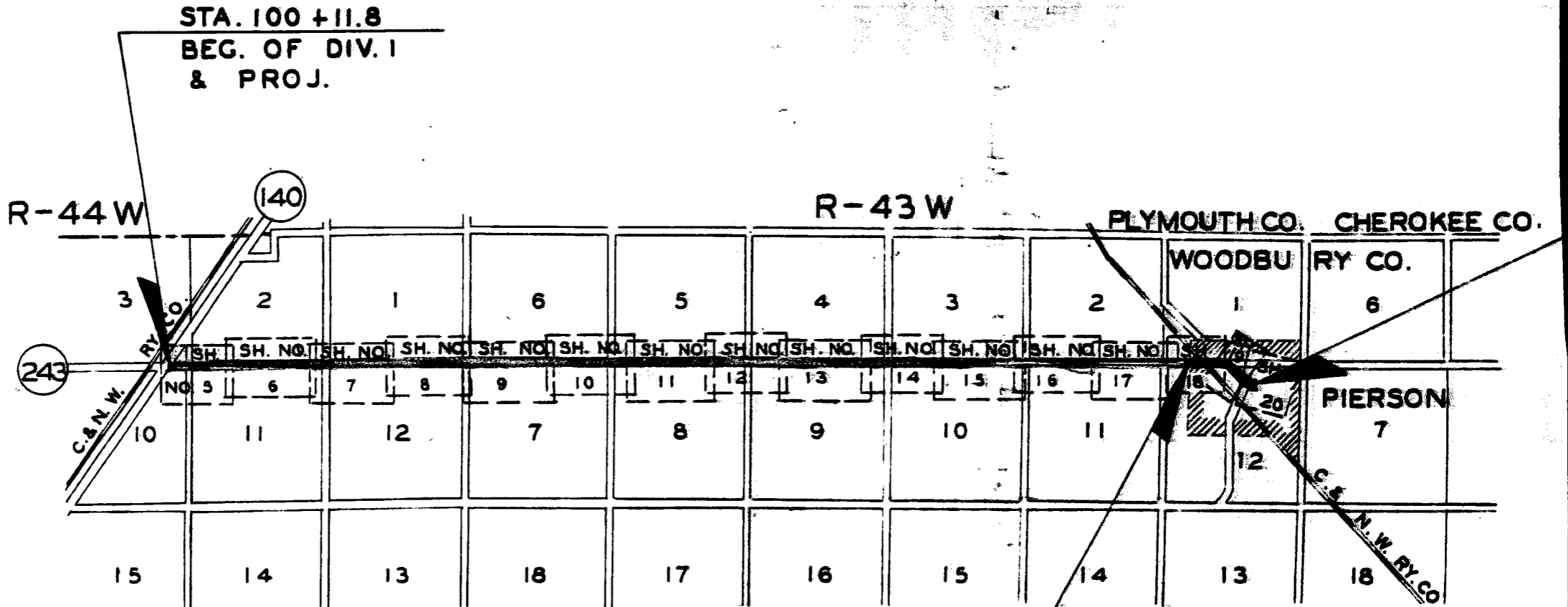
That the Commission finds, determines, and declares that for the immediate preservation of the public peace, health, and safety, and for the promotion of the general welfare, the rights of direct access to, from, and across Primary Highway Number 243 as set out on the attached map and identified as Project Number FA-384
Woodbury County, and more specifically described as follows:

Beginning at Sta. 100 + 11.8 and ending at Sta.
499 + 86.0

shall be controlled under the authority and provisions of Chapter 148, Acts of the 56th General Assembly. The Chief Engineer is hereby authorized and directed to acquire, by the exercise of eminent domain or otherwise, the necessary right of way to carry out the purposes expressed in Chapter 148 and in this resolution, and also to acquire the right of ingress and egress to control the access to said highway.

Resolution adopted by the Commission on
February 8, 1956 (Date)

T-89 N

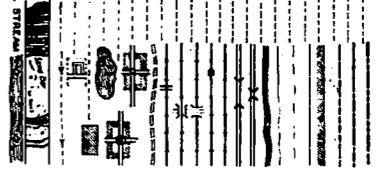


STA. 499 + 86.0
 END OF DIV. 1
~~BEG. OF DIV. 2~~
 AND PROJECT
 (GRADING)

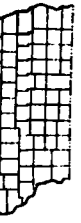
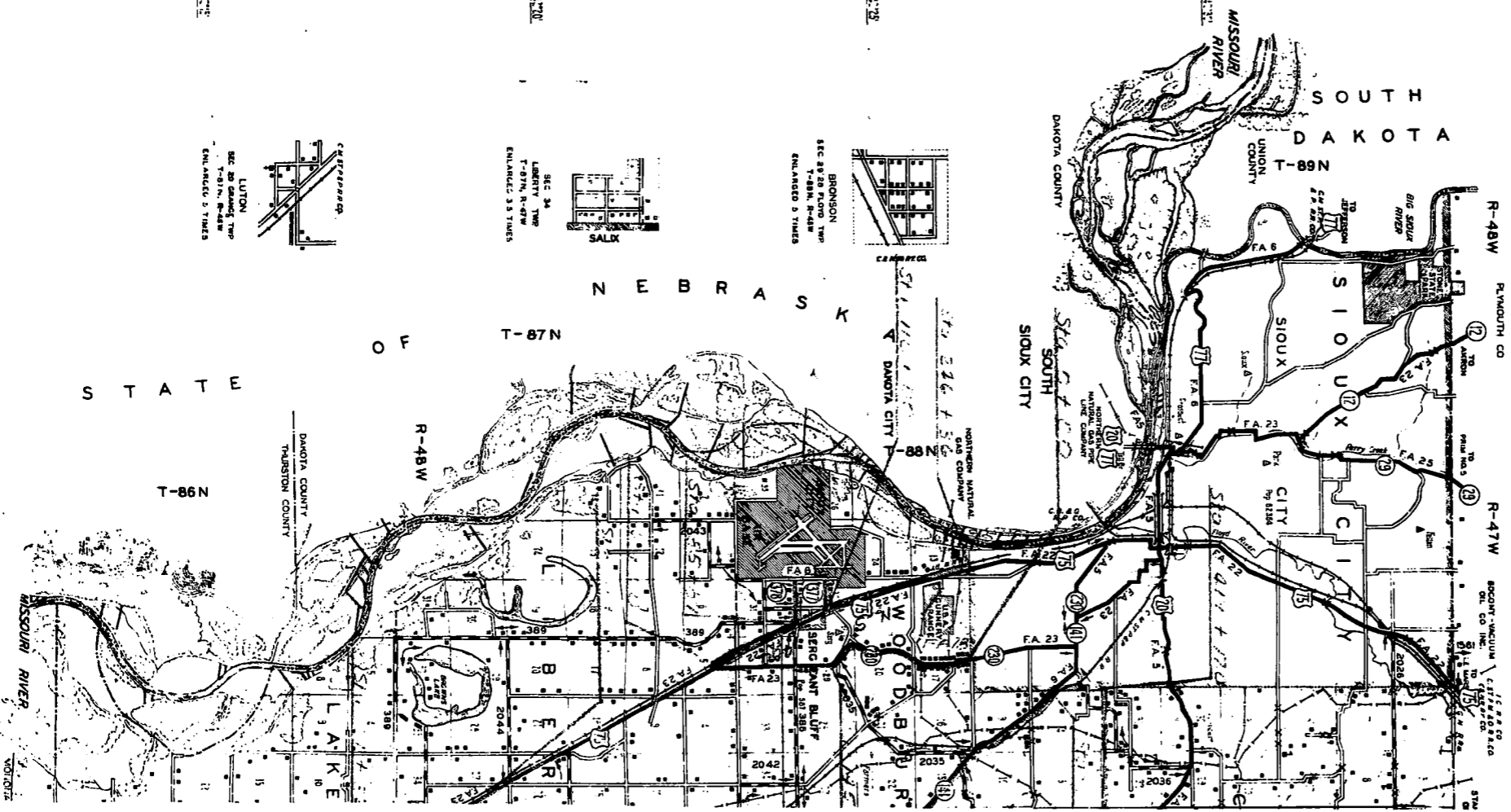
LAYOUT
 SCALE 1 INCH = 1 MILE

STATE LINE
 CIVIL TOWNSHIP
 COMPREHENSIVE LINE
 SECTION LINE
 INTERMITTENT STREAM
 PERMANENT STREAM
 WOOD STRIP
 HIGHWAY BRIDGE SMALL
 HIGHWAY BRIDGE LARGE
 RAILROAD BRIDGE
 RAILROAD STATION
 RAILROAD BELOW OVERHEAD
 RAILROAD OVER BRIDGE
 RAILROAD GRADE CROSSING
 OLD CHANNEL OF STREAM
 CENTER OF CITIES
 CENTER OF COUNTY SEAT
 LAKE ON FLOOD
 SPILL ON FLOOD (STIPPLED)
 SPILL ON FLOOD (SOLID)
 DRAINAGE DITCH
 ATTIRES

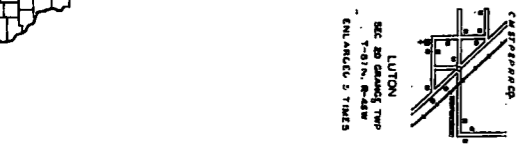
LEGEND



OPERATED SHIP AND BARGE LINE ON NATURAL STREAM



MISSOURI RIVER DATA FROM
 NAVY DEPARTMENT, CORPS OF ENGINEERS, U.S.A. NAVY
 SURVEY OF 1940



STATE OF NEBRASKA

DAKOTA COUNTY
 THURSTON COUNTY

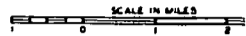
MISSOURI RIVER
 WOODRIDGE

WOODBURY C

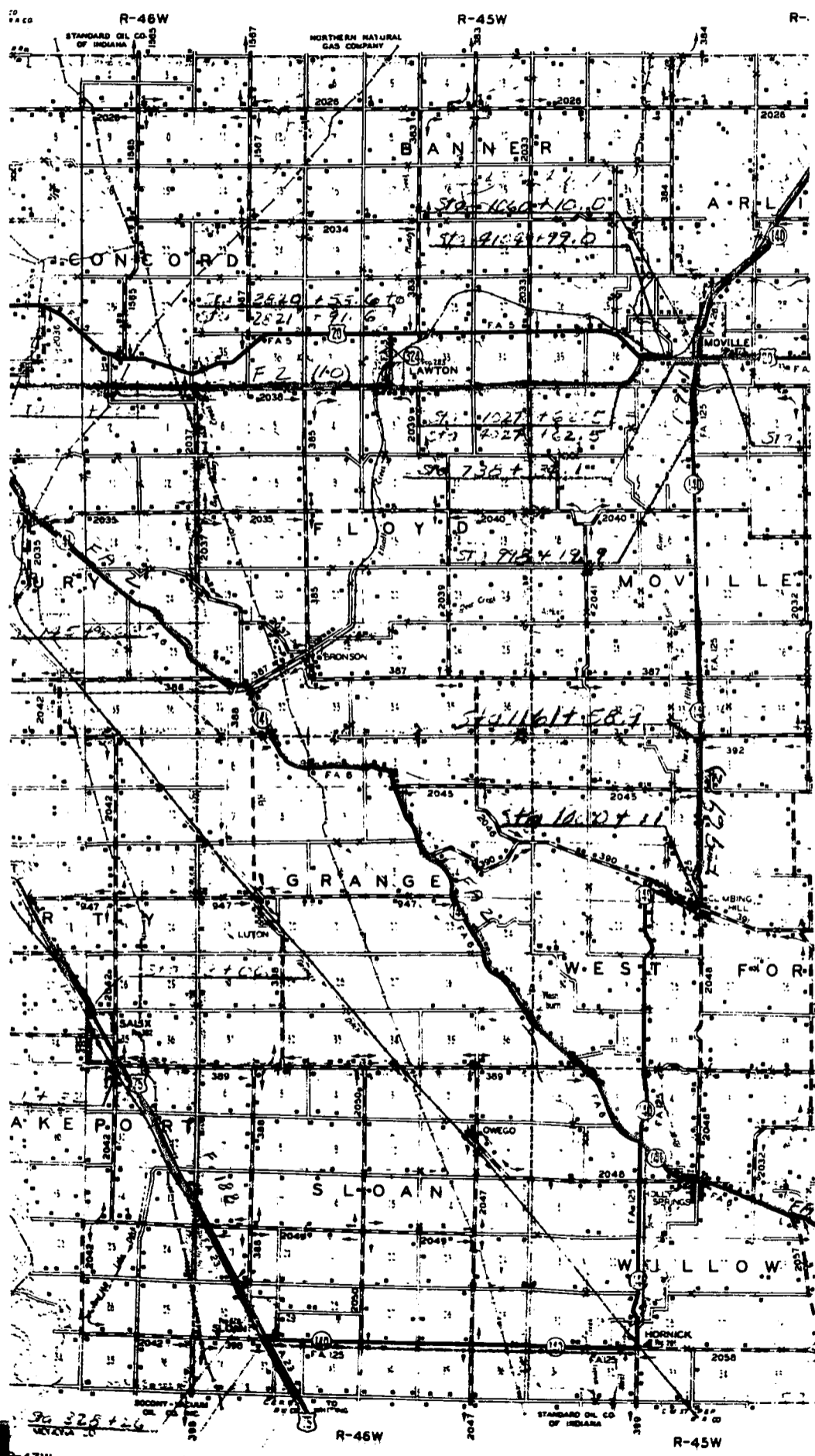
IOWA

PREPARED BY THE
IOWA STATE HIGHWAY COMMISSION
IN COOPERATION WITH THE
FEDERAL WORKS ADMINISTRATION
PUBLIC ROADS ADMINISTRATION
DATA OBTAINED FROM

HIGHWAY PLANNING



1951

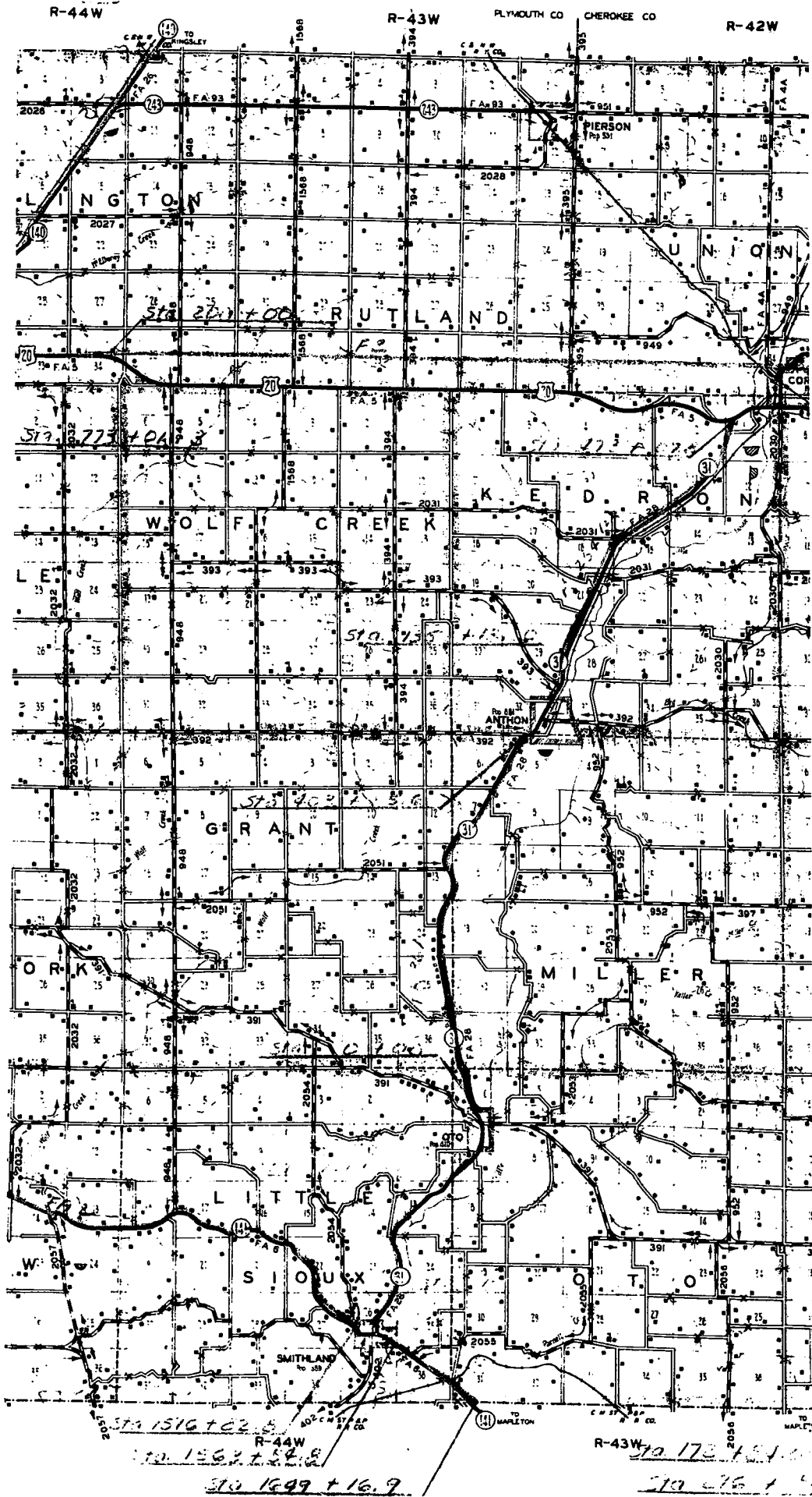
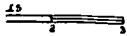


ST 325 + 26
ST 362 + 31.4
ST 422 + 68

MARKET ROAD MAP OF COUNTY

A

THE
AY COMMISSION
WITH THE
S AGENCY
MINISTRATION
FROM
NG SURVEY



LEGEND

FARM UNIT	---	IN USE	---	NOT IN USE	---
DWELLING OTHER THAN FARM	---	---	---	---	---
ROWS OR GROUPS OF DWELLINGS	---	---	---	---	---
STORE OR SMALL BUSINESS ESTABLISHMENT	---	---	---	---	---
CHURCH OR OTHER RELIGIOUS INSTITUTION	---	---	---	---	---
SCHOOL OR OTHER EDUCATIONAL INSTITUTION	---	---	---	---	---
CEMETERY	---	---	---	---	---
TRIANGULATION STATION	---	---	---	---	---
GRAVEL PIT	---	---	---	---	---
HIGHWAY BRIDGE (DRAWBRIDGE)	---	---	---	---	---
PIPE LINE (GAS)	---	---	---	---	---

LEGEND

---	INDICATES FEDERAL AID SYSTEM
---	INDICATES FARM TO MARKET SYSTEM
---	INDICATES PRIMARY ROAD NOT ON FEDERAL AID SYSTEM
---	INDICATES FEDERAL AID ROAD NOT ON PRIMARY SYSTEM
---	INDICATES FARM TO MARKET SYSTEM, FUTURE LOCATION

