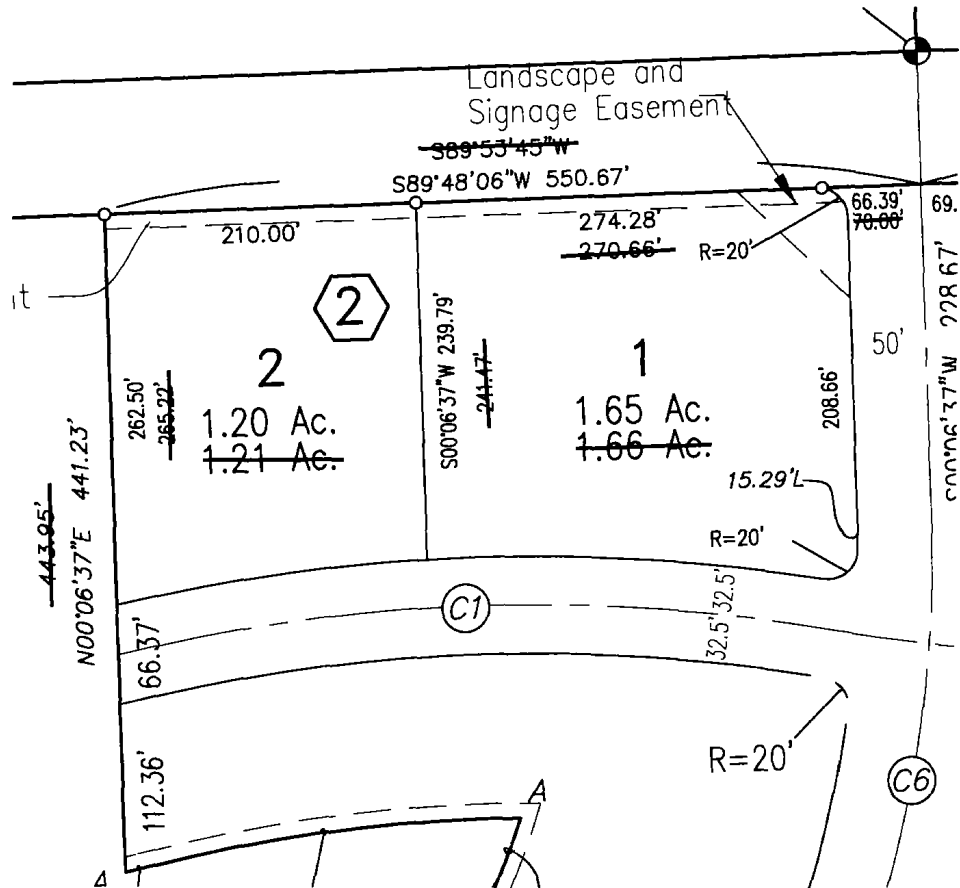


24

AFFIDAVIT OF PLAT CORRECTION, LOTS 1 AND 2, BLOCK 2, DIERS SECOND ADDITION TO THE CITY OF FREMONT, DODGE COUNTY, NEBRASKA.



- 1.21 AC. ORIGINAL PLAT DIMENSION OR ACREAGE BEING REVISED
- SET 5/8" X 24" REBAR W/ RED PLASTIC CAP

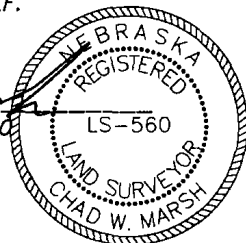
DESCRIPTION

THIS AFFIDAVIT COMPLETED TO AMEND CERTAIN LOT DIMENSIONS AND ACREAGES IN LOTS 1 AND 2, BLOCK 2, DIERS SECOND ADDITION TO THE CITY OF FREMONT, DODGE COUNTY, NEBRASKA.

SURVEYOR'S STATEMENT

I, CHAD W. MARSH, A REGISTERED LAND SURVEYOR IN THE STATE OF NEBRASKA AND THE SURVEYOR OF RECORD FOR THE ORIGINAL PLAT OF DIERS SECOND ADDITION TO THE CITY OF FREMONT, HEREBY CERTIFY THAT THIS AFFIDAVIT OF PLAT CORRECTION WAS DONE BY ME AND IS TRUE AND CORRECT TO THE BEST OF MY KNOWLEDGE AND BELIEF.

Chad W. Marsh
CHAD W. MARSH, L.S. #560
AUGUST 16, 2004



BOOK 2004 PAGE 6418

2004 AUG 27 PM 12:36

Carol Stevens
DODGE COUNTY
REGISTERED OF DEEDS
COMPUTER FILE # 65