

# Polk County Assessor

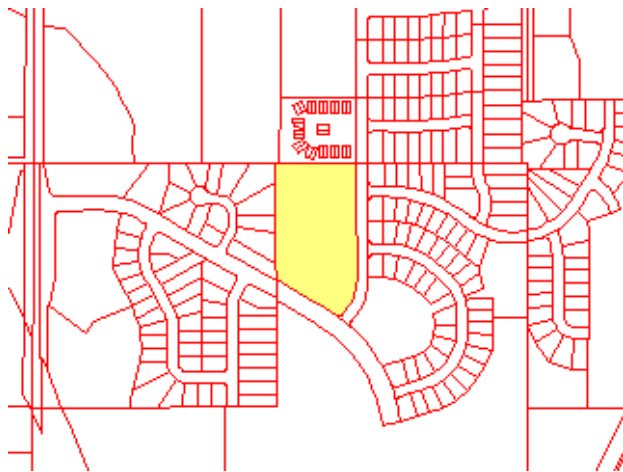
111 Court Avenue #195  
Des Moines, IA 50309-0904

(515) 286-3014 Fax (515) 286-3386  
[polkweb@assess.co.polk.ia.us](mailto:polkweb@assess.co.polk.ia.us)

Location					
<b>Address</b>	1806 28TH AVE SW				
<b>City</b>	ALTOONA	<b>Zip</b>	50009	<b>Jurisdiction</b>	Altoona
<b>District/Parcel</b>	171/00460-484-060	<b>Geoparcels</b>	7923-23-326-001	<b>Status</b>	<a href="#">Active</a>
<b>School</b>	Southeast Polk	<b>Nbhd/Pocket</b>	AT02/A1	<b>Tax Authority Group</b>	ALT-C-SEP-77002
<b>Submarket</b>	Northeast Des Moines	<b>Appraiser</b>	Bob Powers, ICA 515-286-3828		

## Map and Current Photos - 4 Records

Click on parcel to get a new listing



[Bigger Map](#)  
[Google Map](#) [Pictometry](#)

Photo Processed on 2012-10-18 a



Photo Processed on 2013-01-18 b



Photo Processed on 2013-01-18 c



[Historical Photos](#)

## Photo Processed on 2013-01-18 d


[Historical Photos](#)

## Ownership - 1 Record

Ownership	Num	Name	Recorded	Book/Page
Title Holder	1	MEADOW VISTA SENIOR VILLAS LLC	2011-08-11	<a href="#">13937/793</a>

## Legal Description and Mailing Address

LOT 60 MEADOW VISTA SOUTH	MEADOW VISTA PARKSIDE LLC MILLER-VALENTINE PARTNERS 9349 WATERSTONE BLVD CINCINNATI, OH 45249
---------------------------	--

## Current Values

Type	Class	Kind	Land	Bldg	Total
2018 Value	Commercial	Full	\$370,000	\$1,215,100	\$1,585,100

*May Not Be Market Value: [Section 42](#)*

## Zoning - 1 Record

Zoning	Description	SF	Assessor Zoning
R-5	Planned Unit Development		Other

*City of Altoona Community Development Community Development Department 515 967-5138 (2009-09-01)*

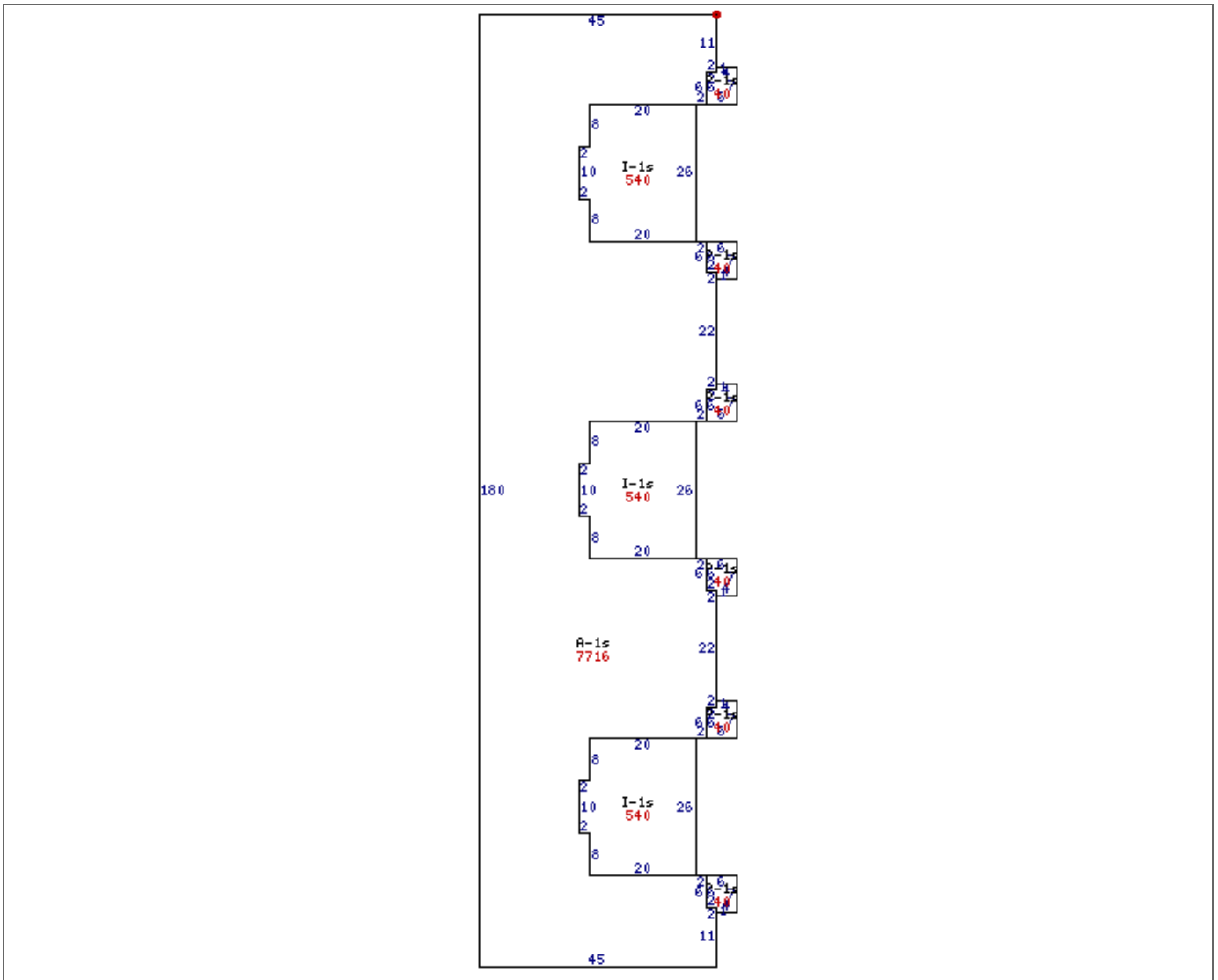
## Land

Square Feet	Acres	Year Platted
323,182	7.419	2011
Topography	Shape	Vacancy
Blank	Irregular	No
Unbuildable	No	

## Commercial Summary

Occupancy	Apartment	Age, Weighted	2011	Total Story Height	1
Land Area	323,182	Gross Area	66,098	Finished Area	52,598
Unfinished Bsmt Area	0	Finished Bsmt Area	0	Number of Units	50
Primary Group	Apartment	Percent Primary Group	76.86	Secondary Group	Garage Attached

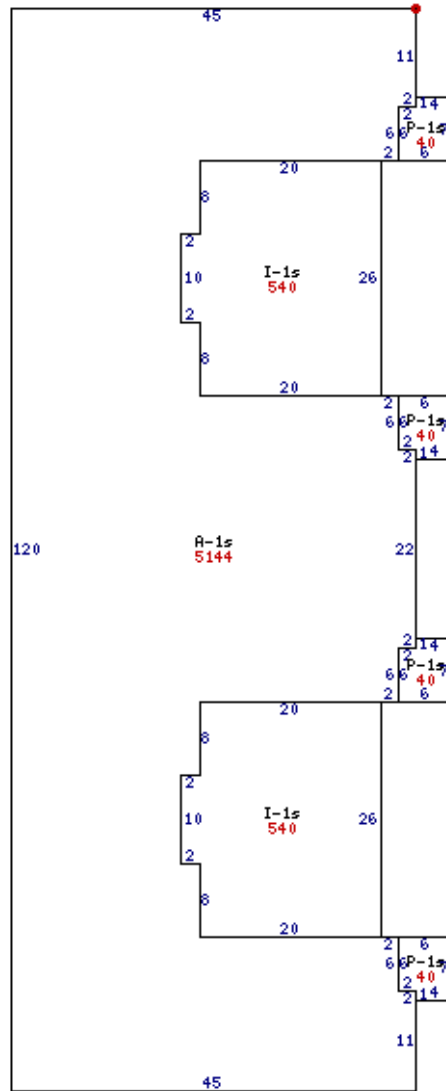
<b>Percent Secondary Group</b>	20.42	<b>Grade, Weighted</b>	4/Grade 4	<b>Bldg Class, Weighted</b>	4/Frame, Concrete Blk, Tile, Tilt Up
<b>Condition, Weighted</b>	NM/Normal	<b>Ground Floor Area</b>	62,318	<b>Perimeter</b>	4,194
<b>Unfinished Area</b>	13,500				
<b>Commercial Sections - 3 Records</b>					
<b>Commercial Section #101</b>					
<b>Occupant</b>	MEADOW VISTA SENIOR VILLAS				
<b>Section Multiplier</b>	7	<b>Occupancy</b>	Apartment	<b>Foundation</b>	Concrete
<b>Submerged</b>	No	<b>Exterior Wall</b>	Siding/Shingle	<b>Brick Veneer</b>	636
<b>Insulation</b>	Yes	<b>Roof Material</b>	Asphalt Shingle	<b>Covered Area</b>	240
<b>Covered Quality</b>	Normal	<b>Wiring</b>	Adequate	<b>Plumbing</b>	Adequate
<b>Total Story Height</b>	1	<b>Frame Type</b>	Frame	<b>Fireproof Construction</b>	No
<b>Bldg Class</b>	Frame, Concrete Blk, Tile, Tilt Up	<b>Total Section Area</b>	7,716	<b>Ground Floor Area</b>	7,176
<b>Perimeter</b>	474	<b>Total Number Units</b>	6	<b>Grade</b>	4+05
<b>Year Built</b>	2011	<b>Condition</b>	Normal		
<b>Comment</b>	Seven 6 unit buildings				
<b>Commercial Groups - 2 Records</b>					
<b>Commercial Group #101 1</b>					
<b>Use Code</b>	Apartment	<b>Base Story</b>	1	<b>Number Stories</b>	1
<b>Total Group Area</b>	6,096	<b>Base Floor Area</b>	6,096	<b>Number Units</b>	6
<b>Heating</b>	Forced Air	<b>Air Conditioning</b>	Yes	<b>Exhaust System</b>	No
<b>Commercial Group #101 2</b>					
<b>Use Code</b>	Garage Attached	<b>Base Story</b>	1	<b>Number Stories</b>	1
<b>Total Group Area</b>	1,620	<b>Base Floor Area</b>	1,620	<b>Heating</b>	None
<b>Air Conditioning</b>	None	<b>Exhaust System</b>	No		



**Commercial Section #102**

<b>Occupant</b>	MEADOW VISTA SENIOR VILLAS				
<b>Section Multiplier</b>	2	<b>Occupancy</b>	Apartment	<b>Foundation</b>	Concrete
<b>Submerged</b>	No	<b>Exterior Wall</b>	Siding/Shingle	<b>Brick Veneer</b>	424
<b>Insulation</b>	Yes	<b>Roof Material</b>	Asphalt Shingle	<b>Covered Area</b>	160
<b>Covered Quality</b>	Normal	<b>Wiring</b>	Adequate	<b>Plumbing</b>	Adequate
<b>Total Story Height</b>	1	<b>Frame Type</b>	Frame	<b>Fireproof Construction</b>	No
<b>Bldg Class</b>	Frame, Concrete Blk, Tile, Tilt Up	<b>Total Section Area</b>	5,144	<b>Ground Floor Area</b>	5,144
<b>Perimeter</b>	346	<b>Total Number Units</b>	4	<b>Grade</b>	4+05
<b>Year Built</b>	2011	<b>Condition</b>	Normal		
<b>Comment</b>	Two 4 unit buildings				

Commercial Groups - 2 Records					
Commercial Group #102 1					
Use Code	Apartment	Base Story	1	Number Stories	1
Total Group Area	4,064	Base Floor Area	4,064	Number Units	4
Heating	Forced Air	Air Conditioning	Yes	Exhaust System	No
Commercial Group #102 2					
Use Code	Garage Attached	Base Story	1	Number Stories	1
Total Group Area	1,080	Base Floor Area	1,080	Heating	None
Air Conditioning	None	Exhaust System	No		



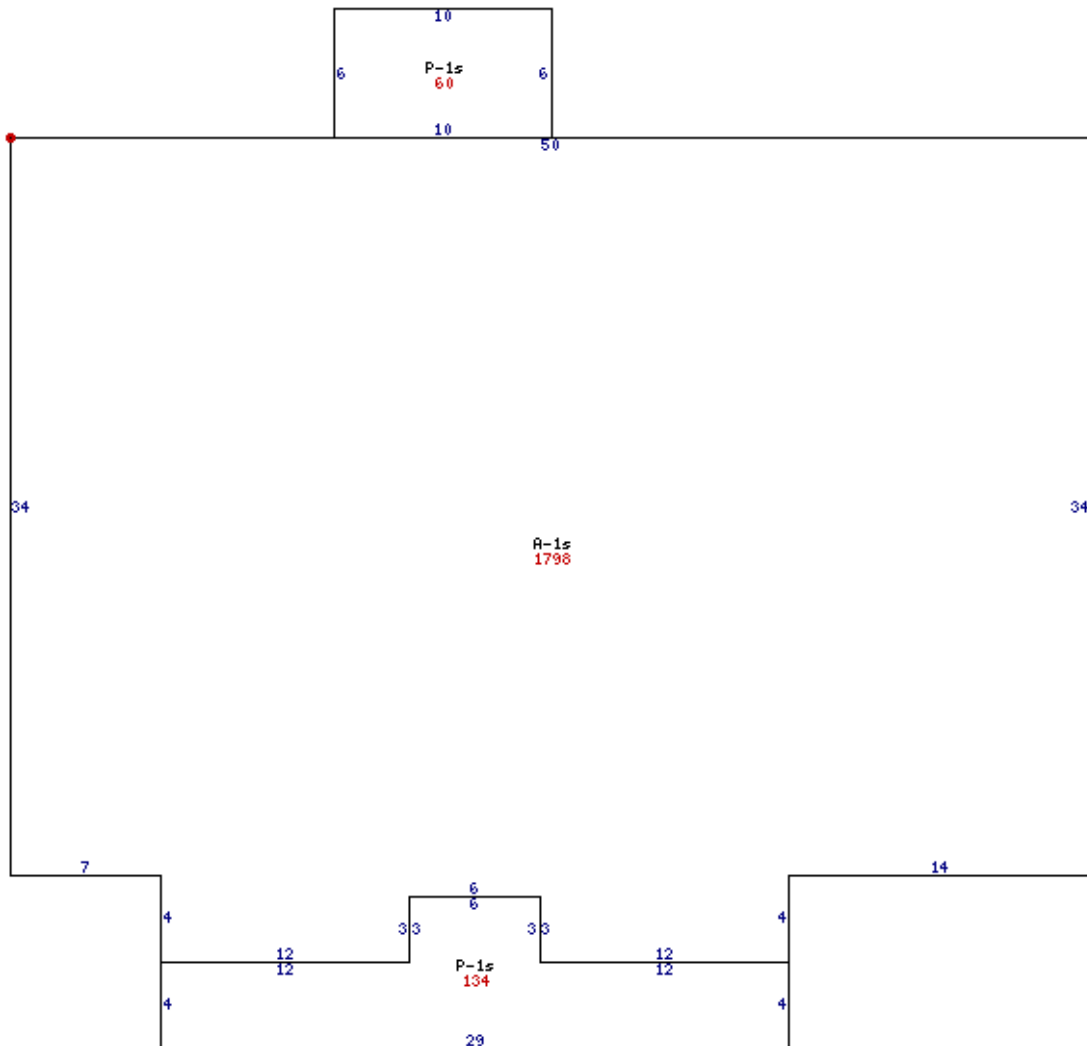
Commercial Section #201					
Occupant	COMMUNITY CENTER				
Section Multiplier	1	Occupancy	Health & Recreation	Foundation	Concrete
Submerged	No	Exterior Wall	Siding/Shingle	Insulation	Yes

<b>Roof</b>	Gable	<b>Roof Material</b>	Asphalt Shingle	<b>Covered Area</b>	194
<b>Covered Quality</b>	Normal	<b>Wiring</b>	Adequate	<b>Plumbing</b>	Adequate
<b>Total Story Height</b>	1	<b>Frame Type</b>	Frame	<b>Fireproof Construction</b>	No
<b>Bldg Class</b>	Frame, Concrete Blk, Tile, Tilt Up	<b>Total Section Area</b>	1,798	<b>Ground Floor Area</b>	1,798
<b>Perimeter</b>	184	<b>Grade</b>	4+00	<b>Year Built</b>	2011
<b>Condition</b>	Normal				

**Commercial Groups - 1 Record**

**Commercial Group #201 1**

<b>Use Code</b>	Health & Recreation	<b>Base Story</b>	1	<b>Number Stories</b>	1
<b>Total Group Area</b>	1,798	<b>Base Floor Area</b>	1,798	<b>Heating</b>	Forced Air
<b>Air Conditioning</b>	Yes	<b>Exhaust System</b>	No		



**Detached Structures - 5 Records**

**Detached Structure #101**

<b>Occupancy</b>	Gazebo	<b>Construction Type</b>	Frame	<b>Measurement Code</b>	Square Feet
<b>Measure 1</b>	144	<b>Grade</b>	4	<b>Year Built</b>	2012
<b>Condition</b>	Normal				
<b>Detached Structure #201</b>					
<b>Occupancy</b>	Concrete Paving	<b>Measurement Code</b>	Square Feet	<b>Measure 1</b>	14,850
<b>Grade</b>	4	<b>Year Built</b>	2012	<b>Condition</b>	Normal
<b>Comment</b>	25 Driveways				
<b>Detached Structure #301</b>					
<b>Occupancy</b>	Concrete Patio	<b>Measurement Code</b>	Square Feet	<b>Measure 1</b>	3,500
<b>Grade</b>	4	<b>Year Built</b>	2012	<b>Condition</b>	Normal
<b>Comment</b>	50 7X10 concrete patios				
<b>Detached Structure #401</b>					
<b>Occupancy</b>	Concrete Paving	<b>Measurement Code</b>	Square Feet	<b>Measure 1</b>	39,500
<b>Grade</b>	4	<b>Year Built</b>	2011	<b>Condition</b>	Normal
<b>Comment</b>	Private streets on parcel				
<b>Detached Structure #501</b>					
<b>Occupancy</b>	Shed	<b>Construction Type</b>	Frame	<b>Measurement Code</b>	Dimensions
<b>Measure 1</b>	12	<b>Measure 2</b>	16	<b>Story Height</b>	1
<b>Grade</b>	4	<b>Year Built</b>	2014	<b>Condition</b>	Normal

#### Sales - 1 Record

Seller	Buyer	Sale Date	Sale Price	Instrument	Book/Page
ALTOONA DEVELOPMENT, LLC	MEADOW VISTA SENIOR VILLAS, LLC	<a href="#">2011-08-10</a>	\$313,130	Deed	<a href="#">13937/793</a>

#### Permits - 28 Records

Year	Type	Permit Status	Application	Description
2017	Pickup	Complete	2017-02-13	review/section 42
2015	Pickup	Complete	2015-02-17	review/section 42
2015	Permit	Complete	2012-11-06	construction/garage (192 sf)
2014	Permit	Pass	2012-11-06	construction/garage (192 sf)
2013	Pickup	Complete	2013-02-28	review/section 42
2013	Permit	Pass	2012-11-06	construction/garage (192 sf)
2013	Permit	Complete	2012-11-05	alterations/signs
2013	Permit	Complete	2012-08-21	addition/gazebo (144 sf)
2013	Permit	Complete	2011-10-21	construction/club house (1803 sf)
2013	Permit	Complete	2011-10-10	construction/townhouse (6092 sf)
2013	Permit	Complete	2011-10-10	construction/townhouse (4061 sf)
2013	Permit	Complete	2011-10-10	construction/townhouse (6092 sf)
2013	Permit	Complete	2011-10-10	construction/townhouse (4061 sf)

Year	Type	Permit Status	Application	Description
2013	Permit	Complete	2011-10-10	construction/townhouse (6092 sf)
2013	Permit	Complete	2011-10-10	construction/townhouse (6092 sf)
2013	Permit	Complete	2011-10-10	construction/townhouse (6092 sf)
2013	Permit	Complete	2011-10-10	construction/townhouse (6092 sf)
2013	Permit	Complete	2011-10-10	construction/townhouse (6092 sf)
2012	Permit	Partial	2011-10-21	construction/club house (1803 sf)
2012	Permit	Partial	2011-10-10	construction/townhouse (4061 sf)
2012	Permit	Partial	2011-10-10	construction/townhouse (6092 sf)
2012	Permit	Partial	2011-10-10	construction/townhouse (6092 sf)
2012	Permit	Partial	2011-10-10	construction/townhouse (6092 sf)
2012	Permit	Partial	2011-10-10	construction/townhouse (6092 sf)
2012	Permit	Partial	2011-10-10	construction/townhouse (6092 sf)
2012	Permit	Partial	2011-10-10	construction/townhouse (6092 sf)
2012	Permit	Partial	2011-10-10	construction/townhouse (6092 sf)
2012	Permit	Partial	2011-10-10	construction/townhouse (6092 sf)
2012	Permit	Partial	2011-10-10	construction/townhouse (4061 sf)

#### Historical Values

Yr	Type	Class	Kind	Land	Bldg	Total
2017	<a href="#">Assessment Roll</a>	Commercial	Full	\$370,000	\$1,215,100	\$1,585,100
2015	<a href="#">Assessment Roll</a>	Commercial	Full	\$310,000	\$1,162,800	\$1,472,800
2013	<a href="#">Assessment Roll</a>	Commercial Multiple	Full	\$305,000	\$672,000	\$977,000
2012	<a href="#">Assessment Roll</a>	Commercial Multiple	Full	\$305,000	\$238,000	\$543,000

This template was last modified on Sat Mar 4 12:31:48 2017 .



## 2018 Real Estate Tax - Parcel # 17100460484060

### Property Information

<b>Name</b>	MEADOW VISTA SENIOR VILLAS LLC
<b>District</b>	171
<b>Property Address</b>	1806 28TH AVE SW ALTOONA IA 50009
<b>Mailing Address</b>	9349 WATERSTONE BLVD CINCINNATI OH 45249-8320
<b>Legal Description</b>	LOT 60 MEADOW VISTA SOUTH

### Installment 1

<b>Due Date</b>	9/1/2017
<b>Late Date</b>	10/3/2017
<b>Original Amount Due</b>	\$27,299.00
<b>Amount Payable Online for Installment 1</b>	\$0.00

### Installment 2

<b>Due Date</b>	3/1/2018
<b>Late Date</b>	4/3/2018
<b>Original Amount Due</b>	\$27,299.00
<b>Amount Payable Online for Installment 2</b>	\$0.00

### Online Payment History

No payments were found for this parcel.

[View Full Online Payment History for this Parcel](#)