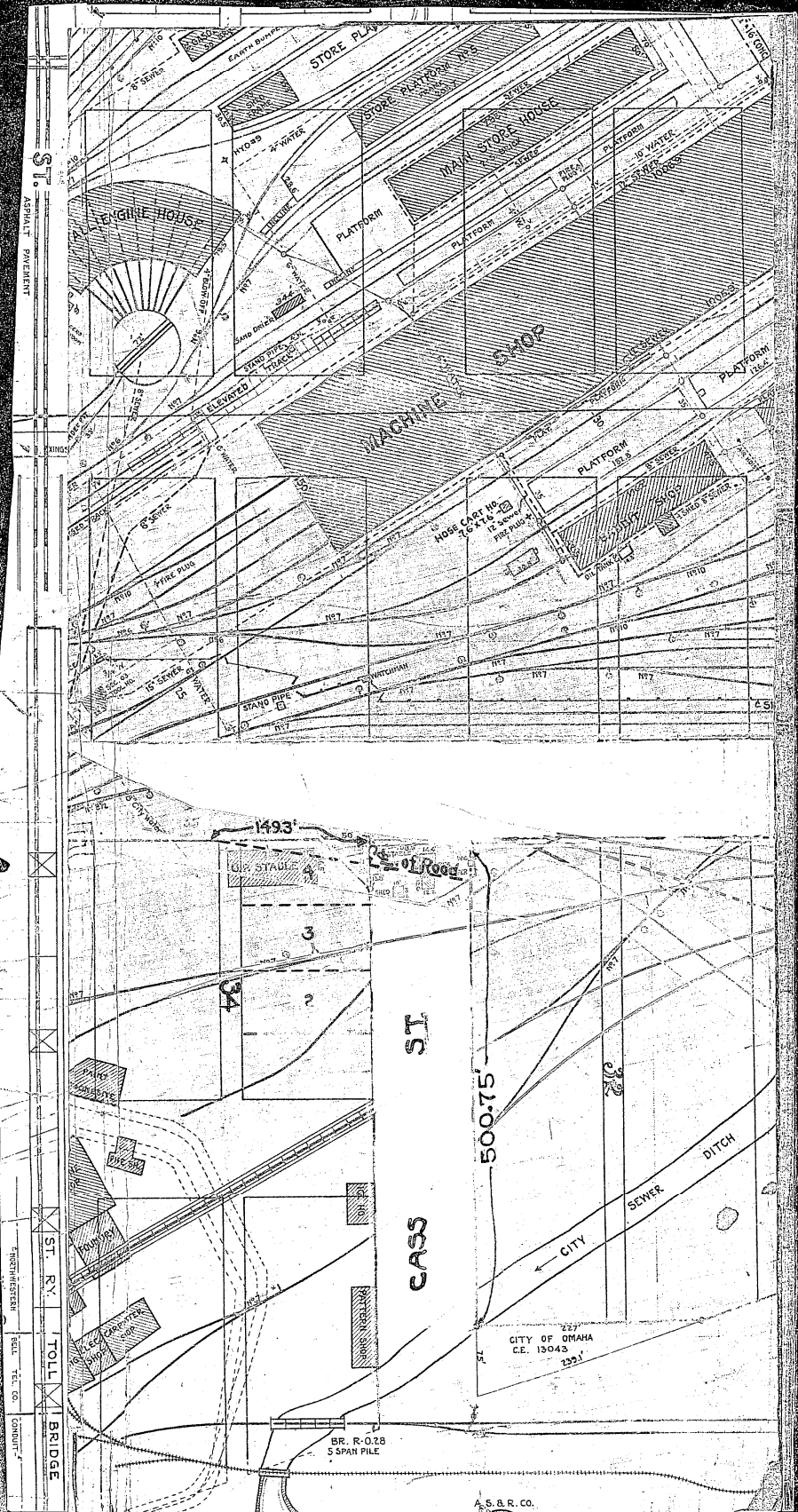


MISCELLANEOUS RECORD, No. 74

1. CERT'D. COPY ORDINANCE No. 12902.

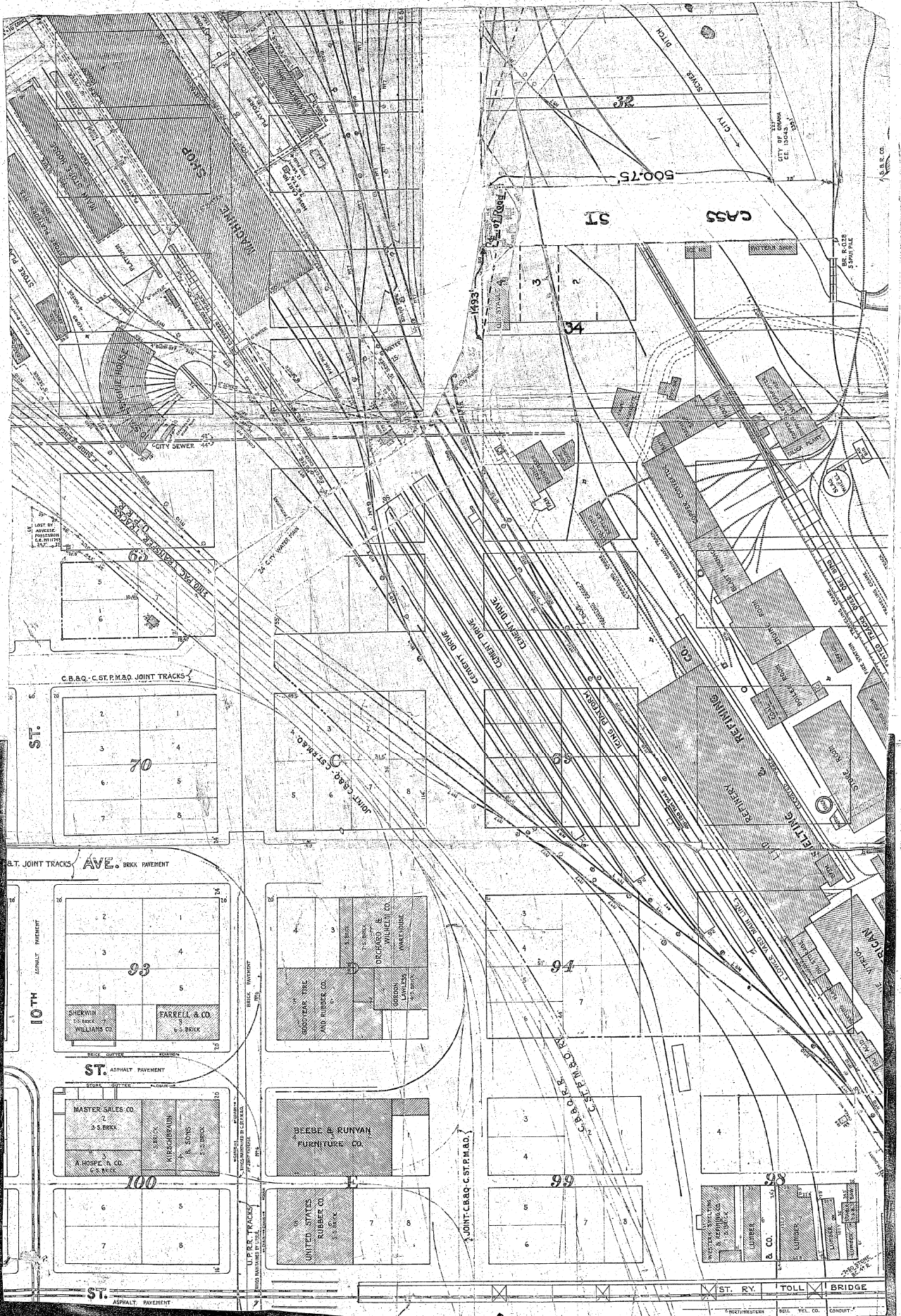
City of Omaha
to
Whom It May Concern.



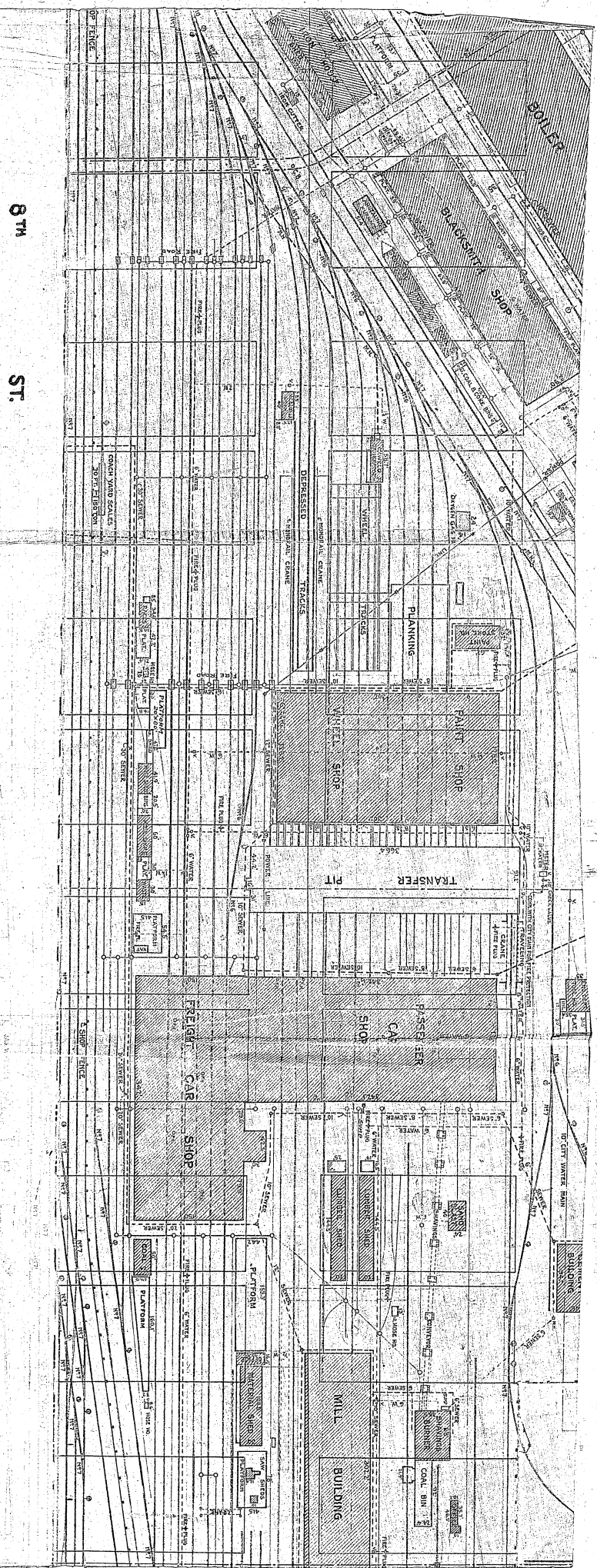
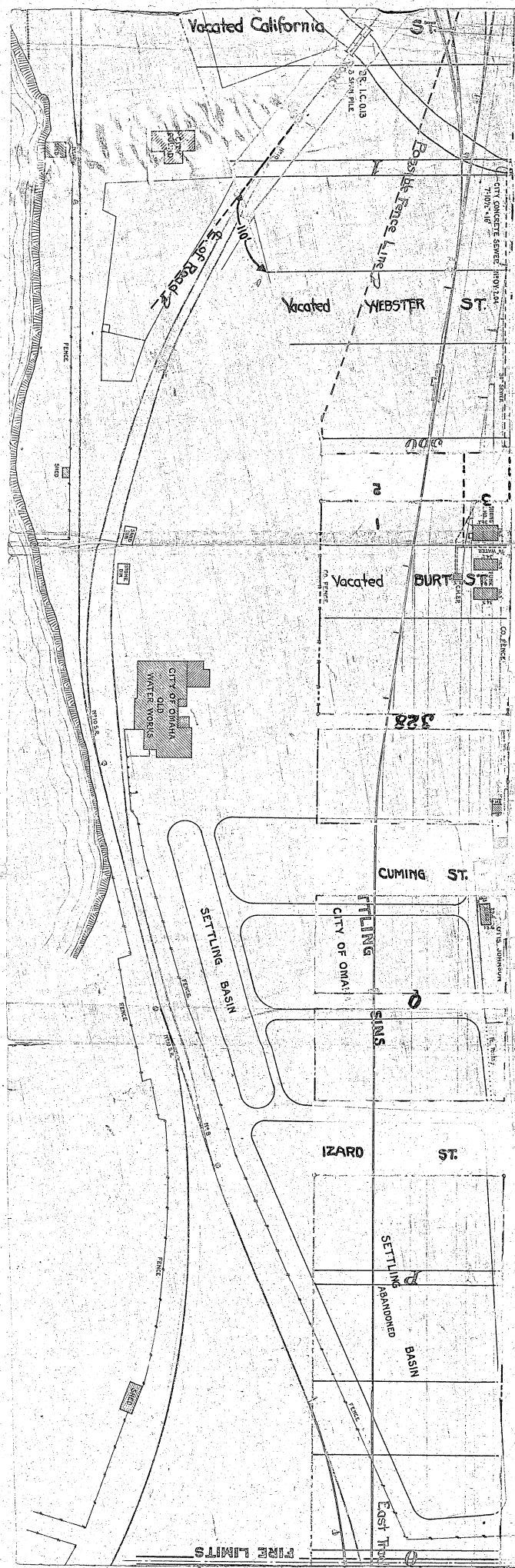
MISCELLANEOUS RECORD, No. 74

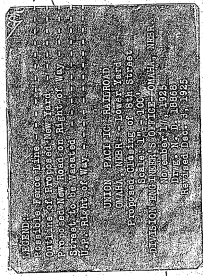
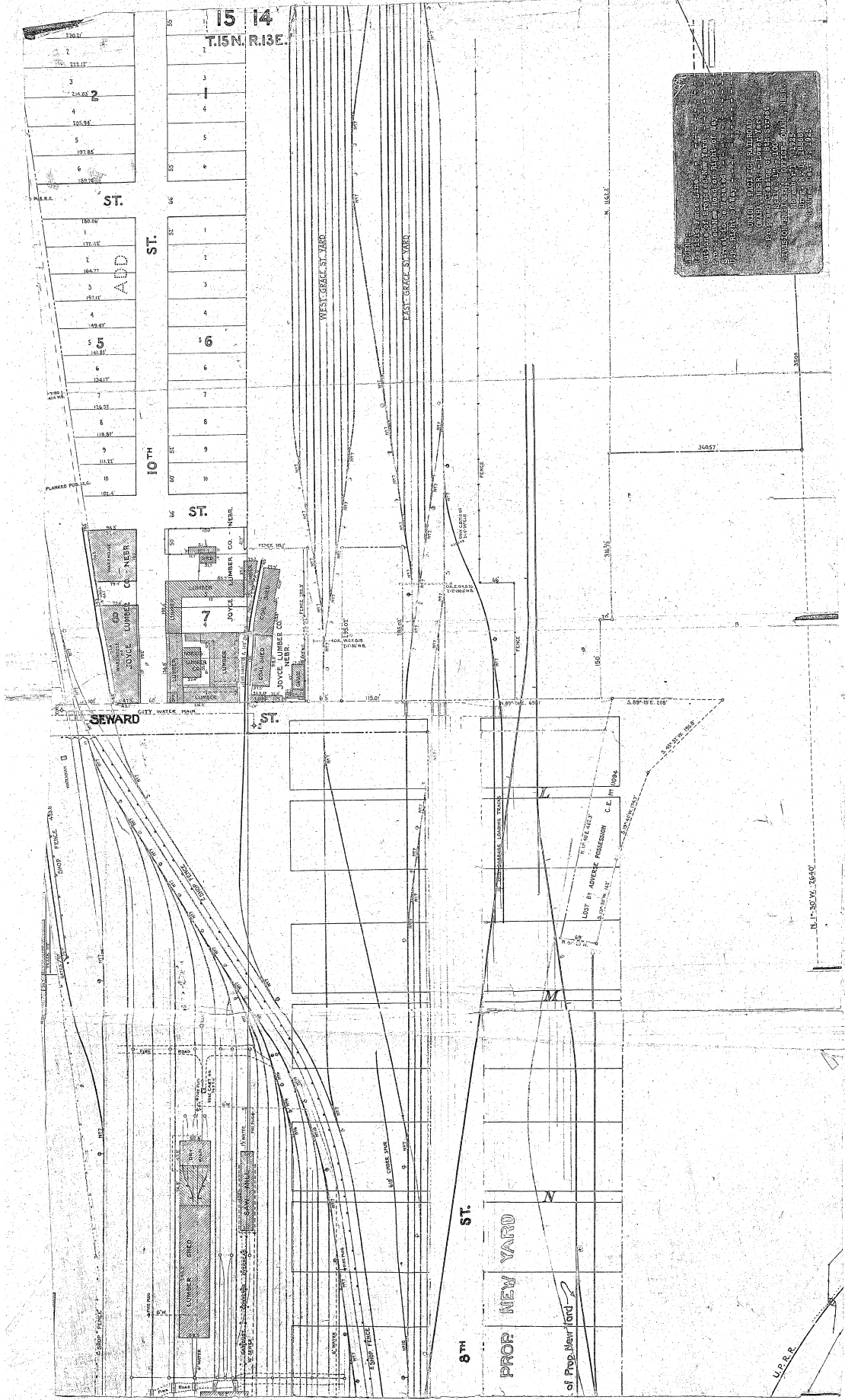
1. CERTIFIED COPY ORDINANCE No. 12902.

City of Omaha
Whom It May Concern:



ST. RY.	TOLL	BRIDGE
INVESTMENT	SELL TEL. CO.	CONDUIT





15 14
T.15N. R.13E.

ST.

187.50
171.21
164.77
151.11
140.91
130.85
124.72
118.91
111.81
101.4

ST.

10TH

15 14
T.15N. R.13E.

1
2
3
4
5
6
7
8
9
10

ST.

SEWARD

ST.

8TH

ST.

PROP. NEW YARD

of Prop. New York

LIST BY ADVISE PROVISION C. L. H. 1924

U.S.P.R.

U. S. 200 W. 1640