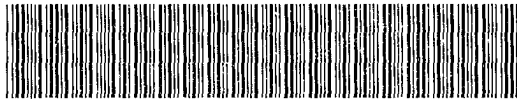




BK 2207 PG 564-594



DEED 2002 04896

RICHARD H. TAKECHI
REGISTER OF DEEDS
DOUGLAS COUNTY, NE

02 APR 10 PM 2:40

RECEIVED

THIS PAGE INCLUDED FOR INDEXING
PAGE DOWN FOR BALANCE OF INSTRUMENT

X Deed
31
58

FEE 18400
FB 01-60000
03-80000 > OLD
BKP 14-15-13 ✓ C/O _____ COMP ~~CR~~ 1/2
DEL ~~B~~ SCAN CR FV _____

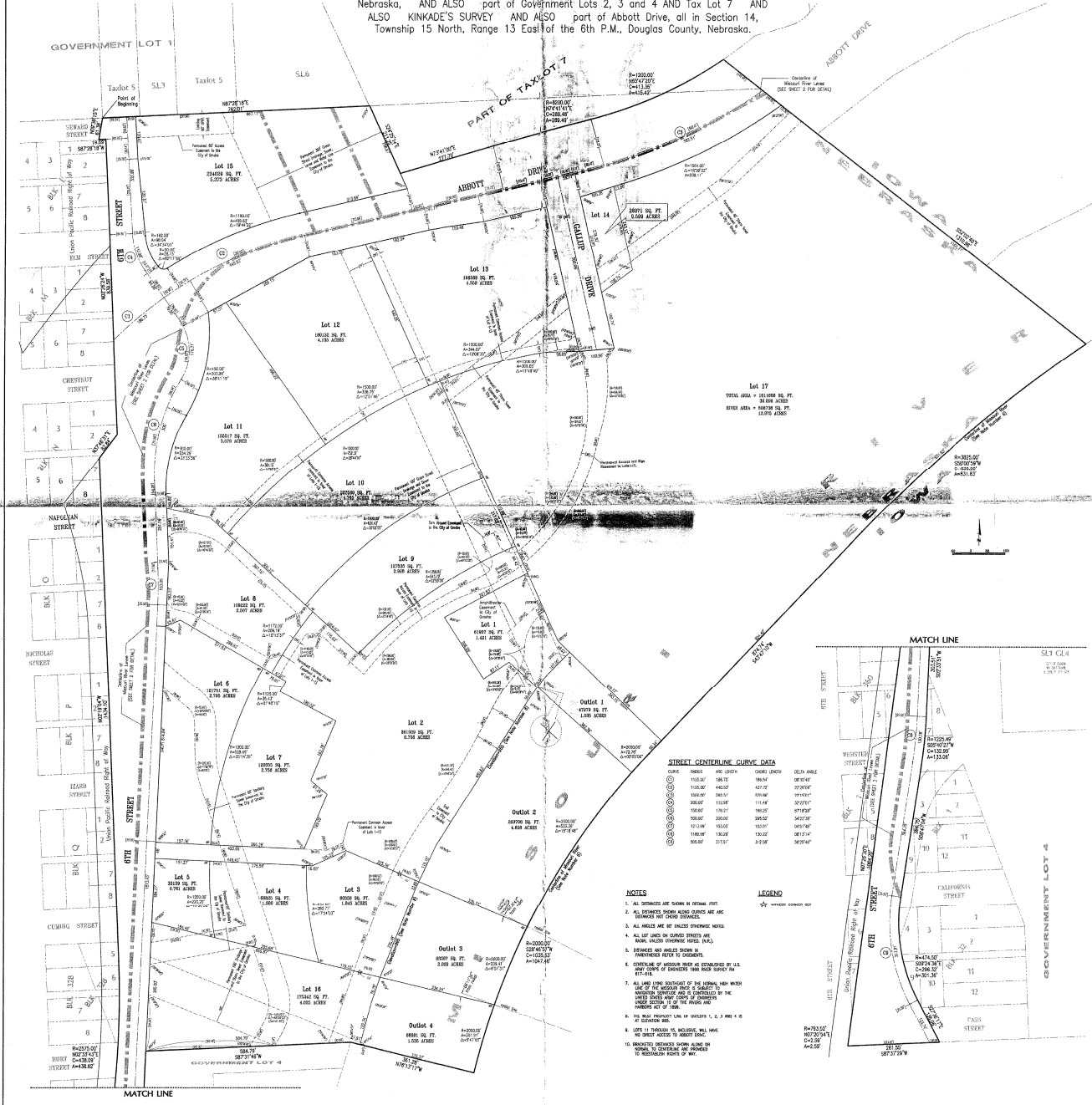
New # 07-13257

Temp. 12 4 01

RETURN: LAMAR RYNEARSON & ASSOC.
14710 W. DODGERD, SUITE 100, OMAHA, NE 68154-2028
496-2498

GALLUP UNIVERSITY RIVERFRONT CAMPUS

Lots 1 through 17, inclusive, and Outlots 1 through 4, inclusive, being a platting of part of Blocks N, O, P, Q, 1, 32, 328, 360 and abutting alleys within said Blocks together with part of vacated Cass Street, California Street, Webster Street, Burt Street, Cumming Street, Izard Street, Nicholas Street and Napoleon Street, all in THE ORIGINAL CITY OF OMAHA, a subdivision, as surveyed and lithographed in Douglas County, Nebraska, AND ALSO part of Government Lots 2, 3 and 4 AND Tax Lot 7 AND ALSO KINKADE'S SURVEY AND ALSO part of Abbott Drive, all in Section 14, Township 15 North, Range 13 East of the 6th P.M., Douglas County, Nebraska.



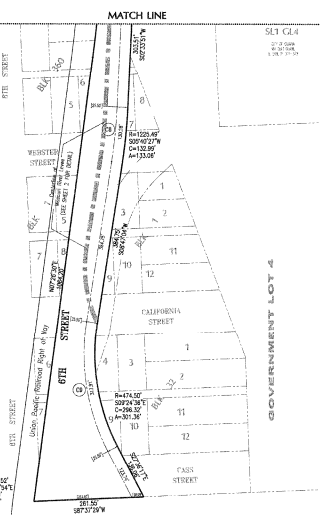
STREET CENTERLINE CURVE DATA

STREET	BEARING	ARC LENGTH	CHORD BEARING	CHORD DISTANCE
1	115.00°	186.15	186.54	30.20'±
2	110.00°	443.57	437.72	77.24'±
3	200.00°	285.57	279.96	55.61'±
4	200.00°	115.98	111.48	22.51'±
5	100.00°	136.57	140.52	27.95'±
6	300.00°	200.00	205.32	34.32'±
7	100.00°	193.00	193.07	32.91'±
8	300.00°	217.41	219.58	36.17'±

- NOTES**
1. ALL DIMENSIONS ARE SHOWN IN DECIMAL FEET
 2. ALL DIMENSIONS SHOWN AROUND CURVES ARE ARC DIMENSIONS UNLESS OTHERWISE NOTED
 3. ALL ALLEYS ARE 10' UNLESS OTHERWISE NOTED
 4. ALL LOT LINES ON CURVED STREETS ARE BOUND BY THE STREET CENTERLINE
 5. DIMENSIONS AND ANGLES SHOWN IN DIMENSIONS REFER TO DECIMALS
 6. CONTINUES OF SURVEY BEING AS ESTABLISHED BY U.S. GEOLOGICAL SURVEY AND IS CONTROLLED BY THE UNITED STATES GOVERNMENT AND IS CONTROLLED BY THE UNITED STATES GOVERNMENT AND IS CONTROLLED BY THE UNITED STATES GOVERNMENT AND IS CONTROLLED BY THE UNITED STATES GOVERNMENT
 7. ALL LOTS ARE BEING SURVEYED BY THE ORIGINAL HIGH WATER
 8. THE REAL PROPERTY LINE ON CORNERS 1, 2, 3 AND 4 IS AS ESTABLISHED BY U.S.
 9. LOTS 11 THROUGH 15, INCLUDING 16, HAVE NO STREET ACCESS TO ABBOTT DRIVE.
 10. DIMENSIONS INDICES SHOWN AROUND CURVES ARE CENTERLINE DIMENSIONS UNLESS OTHERWISE NOTED.

LEGEND

Symbol for centerline curve data



Drawn by
Designed by
Reviewed by
Checked by
Field Notes
Reference

lamp ryerson & associates, inc.
1415 West Dodge Road, Suite 400
Lincoln, Nebraska 68502
Tel: 402.442.4444
Fax: 402.442.4444
www.lamp-ryerson.com

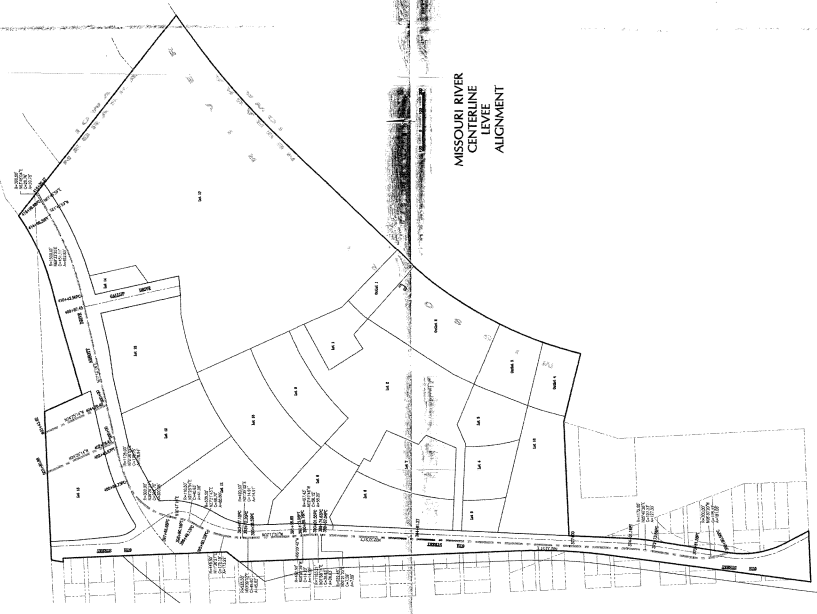
GALLUP UNIVERSITY RIVERFRONT CAMPUS (LOTS 1 THROUGH 17 AND OUTLOTS 1 THROUGH 4) DOUGLAS COUNTY, NEBRASKA

FINAL PLAT

job number: 15-004
6/17/2012
book page
date: JANUARY 2, 2012
sheet
1 of 2

GALLUP UNIVERSITY RIVERFRONT CAMPUS

Lots 1 through 17, inclusive, and Outlots 1 through 4, inclusive, being a platting of land together with part of vacated Cass Street, California Street, Webster Street, Bart Street, Gunning Street, Izard Street, Nicholas Street and Napoleon Street, all in THE ORIGINAL CITY OF OMAHA, a subdivision, as surveyed and lithographed in Douglas County, Nebraska, AND ALSO part of Government Lots 2, 3 and 4 AND Tax Lot 7 AND ALSO KINGADE'S SURVEY AND ALSO part of Abbott Drive, all in Section 14, Township 15 North, Range 15 East of the 6th P.M., Douglas County, Nebraska.



1. ALL RIGHTS RESERVED BY THE SURVEYOR.

2. THIS PLAN IS SUBJECT TO THE CITY OF OMAHA, ILLINOIS, PLANNING DEPARTMENT'S REVIEW AND APPROVAL.

3. THE CITY OF OMAHA, ILLINOIS, PLANNING DEPARTMENT HAS REVIEWED THIS PLAN AND HAS DETERMINED THAT IT IS IN ACCORDANCE WITH THE CITY OF OMAHA, ILLINOIS, PLANNING DEPARTMENT'S REGULATIONS AND ORDINANCES.

4. THE CITY OF OMAHA, ILLINOIS, PLANNING DEPARTMENT HAS REVIEWED THIS PLAN AND HAS DETERMINED THAT IT IS IN ACCORDANCE WITH THE CITY OF OMAHA, ILLINOIS, PLANNING DEPARTMENT'S REGULATIONS AND ORDINANCES.

5. THE CITY OF OMAHA, ILLINOIS, PLANNING DEPARTMENT HAS REVIEWED THIS PLAN AND HAS DETERMINED THAT IT IS IN ACCORDANCE WITH THE CITY OF OMAHA, ILLINOIS, PLANNING DEPARTMENT'S REGULATIONS AND ORDINANCES.

6. THE CITY OF OMAHA, ILLINOIS, PLANNING DEPARTMENT HAS REVIEWED THIS PLAN AND HAS DETERMINED THAT IT IS IN ACCORDANCE WITH THE CITY OF OMAHA, ILLINOIS, PLANNING DEPARTMENT'S REGULATIONS AND ORDINANCES.

7. THE CITY OF OMAHA, ILLINOIS, PLANNING DEPARTMENT HAS REVIEWED THIS PLAN AND HAS DETERMINED THAT IT IS IN ACCORDANCE WITH THE CITY OF OMAHA, ILLINOIS, PLANNING DEPARTMENT'S REGULATIONS AND ORDINANCES.

8. THE CITY OF OMAHA, ILLINOIS, PLANNING DEPARTMENT HAS REVIEWED THIS PLAN AND HAS DETERMINED THAT IT IS IN ACCORDANCE WITH THE CITY OF OMAHA, ILLINOIS, PLANNING DEPARTMENT'S REGULATIONS AND ORDINANCES.

9. THE CITY OF OMAHA, ILLINOIS, PLANNING DEPARTMENT HAS REVIEWED THIS PLAN AND HAS DETERMINED THAT IT IS IN ACCORDANCE WITH THE CITY OF OMAHA, ILLINOIS, PLANNING DEPARTMENT'S REGULATIONS AND ORDINANCES.

10. THE CITY OF OMAHA, ILLINOIS, PLANNING DEPARTMENT HAS REVIEWED THIS PLAN AND HAS DETERMINED THAT IT IS IN ACCORDANCE WITH THE CITY OF OMAHA, ILLINOIS, PLANNING DEPARTMENT'S REGULATIONS AND ORDINANCES.

11. THE CITY OF OMAHA, ILLINOIS, PLANNING DEPARTMENT HAS REVIEWED THIS PLAN AND HAS DETERMINED THAT IT IS IN ACCORDANCE WITH THE CITY OF OMAHA, ILLINOIS, PLANNING DEPARTMENT'S REGULATIONS AND ORDINANCES.

12. THE CITY OF OMAHA, ILLINOIS, PLANNING DEPARTMENT HAS REVIEWED THIS PLAN AND HAS DETERMINED THAT IT IS IN ACCORDANCE WITH THE CITY OF OMAHA, ILLINOIS, PLANNING DEPARTMENT'S REGULATIONS AND ORDINANCES.

13. THE CITY OF OMAHA, ILLINOIS, PLANNING DEPARTMENT HAS REVIEWED THIS PLAN AND HAS DETERMINED THAT IT IS IN ACCORDANCE WITH THE CITY OF OMAHA, ILLINOIS, PLANNING DEPARTMENT'S REGULATIONS AND ORDINANCES.

14. THE CITY OF OMAHA, ILLINOIS, PLANNING DEPARTMENT HAS REVIEWED THIS PLAN AND HAS DETERMINED THAT IT IS IN ACCORDANCE WITH THE CITY OF OMAHA, ILLINOIS, PLANNING DEPARTMENT'S REGULATIONS AND ORDINANCES.

15. THE CITY OF OMAHA, ILLINOIS, PLANNING DEPARTMENT HAS REVIEWED THIS PLAN AND HAS DETERMINED THAT IT IS IN ACCORDANCE WITH THE CITY OF OMAHA, ILLINOIS, PLANNING DEPARTMENT'S REGULATIONS AND ORDINANCES.

16. THE CITY OF OMAHA, ILLINOIS, PLANNING DEPARTMENT HAS REVIEWED THIS PLAN AND HAS DETERMINED THAT IT IS IN ACCORDANCE WITH THE CITY OF OMAHA, ILLINOIS, PLANNING DEPARTMENT'S REGULATIONS AND ORDINANCES.

17. THE CITY OF OMAHA, ILLINOIS, PLANNING DEPARTMENT HAS REVIEWED THIS PLAN AND HAS DETERMINED THAT IT IS IN ACCORDANCE WITH THE CITY OF OMAHA, ILLINOIS, PLANNING DEPARTMENT'S REGULATIONS AND ORDINANCES.

18. THE CITY OF OMAHA, ILLINOIS, PLANNING DEPARTMENT HAS REVIEWED THIS PLAN AND HAS DETERMINED THAT IT IS IN ACCORDANCE WITH THE CITY OF OMAHA, ILLINOIS, PLANNING DEPARTMENT'S REGULATIONS AND ORDINANCES.

19. THE CITY OF OMAHA, ILLINOIS, PLANNING DEPARTMENT HAS REVIEWED THIS PLAN AND HAS DETERMINED THAT IT IS IN ACCORDANCE WITH THE CITY OF OMAHA, ILLINOIS, PLANNING DEPARTMENT'S REGULATIONS AND ORDINANCES.

20. THE CITY OF OMAHA, ILLINOIS, PLANNING DEPARTMENT HAS REVIEWED THIS PLAN AND HAS DETERMINED THAT IT IS IN ACCORDANCE WITH THE CITY OF OMAHA, ILLINOIS, PLANNING DEPARTMENT'S REGULATIONS AND ORDINANCES.



James H. Smith
Surveyor
State of Nebraska
No. 10121

NOTICE: ALL RIGHTS RESERVED BY THE SURVEYOR.

THIS PLAN IS SUBJECT TO THE CITY OF OMAHA, ILLINOIS, PLANNING DEPARTMENT'S REVIEW AND APPROVAL.

THE CITY OF OMAHA, ILLINOIS, PLANNING DEPARTMENT HAS REVIEWED THIS PLAN AND HAS DETERMINED THAT IT IS IN ACCORDANCE WITH THE CITY OF OMAHA, ILLINOIS, PLANNING DEPARTMENT'S REGULATIONS AND ORDINANCES.

Missouri River
Centerline
Levelle
Alignment

ACKNOWLEDGMENT OF SURVEYOR

I, the undersigned, being duly sworn, depose and say that I am the Surveyor of the above described land, and that I have surveyed the same in accordance with the laws of the State of Nebraska, and that the same are true and correct.

Witness my hand and seal this 15th day of July, 2003.

James H. Smith
Surveyor
State of Nebraska
No. 10121

APPROVED BY THE BOARD OF SUPERVISORS

James H. Smith
Surveyor
State of Nebraska
No. 10121

APPROVED BY THE CITY OF OMAHA

James H. Smith
Surveyor
State of Nebraska
No. 10121

APPROVED BY THE CITY OF OMAHA

James H. Smith
Surveyor
State of Nebraska
No. 10121

APPROVED BY THE CITY OF OMAHA

James H. Smith
Surveyor
State of Nebraska
No. 10121

APPROVED BY THE CITY OF OMAHA

James H. Smith
Surveyor
State of Nebraska
No. 10121

Drawn by: [Name]

Checked by: [Name]

Reviewed by: [Name]

DATE: [Date]

LAMP, TYNEARSON & ASSOCIATES, INC.
SURVEYORS
1001 S. 10TH STREET, SUITE 100
LINCOLN, NEBRASKA 68502
PHONE: (405) 484-2700
FAX: (405) 484-2700

GALLUP UNIVERSITY RIVERFRONT CAMPUS (LOTS 1 THROUGH 17 AND OUTLOTS 1 THROUGH 4) DOUGLAS COUNTY, NEBRASKA

FINAL PLAT

2 of 2
SHEET