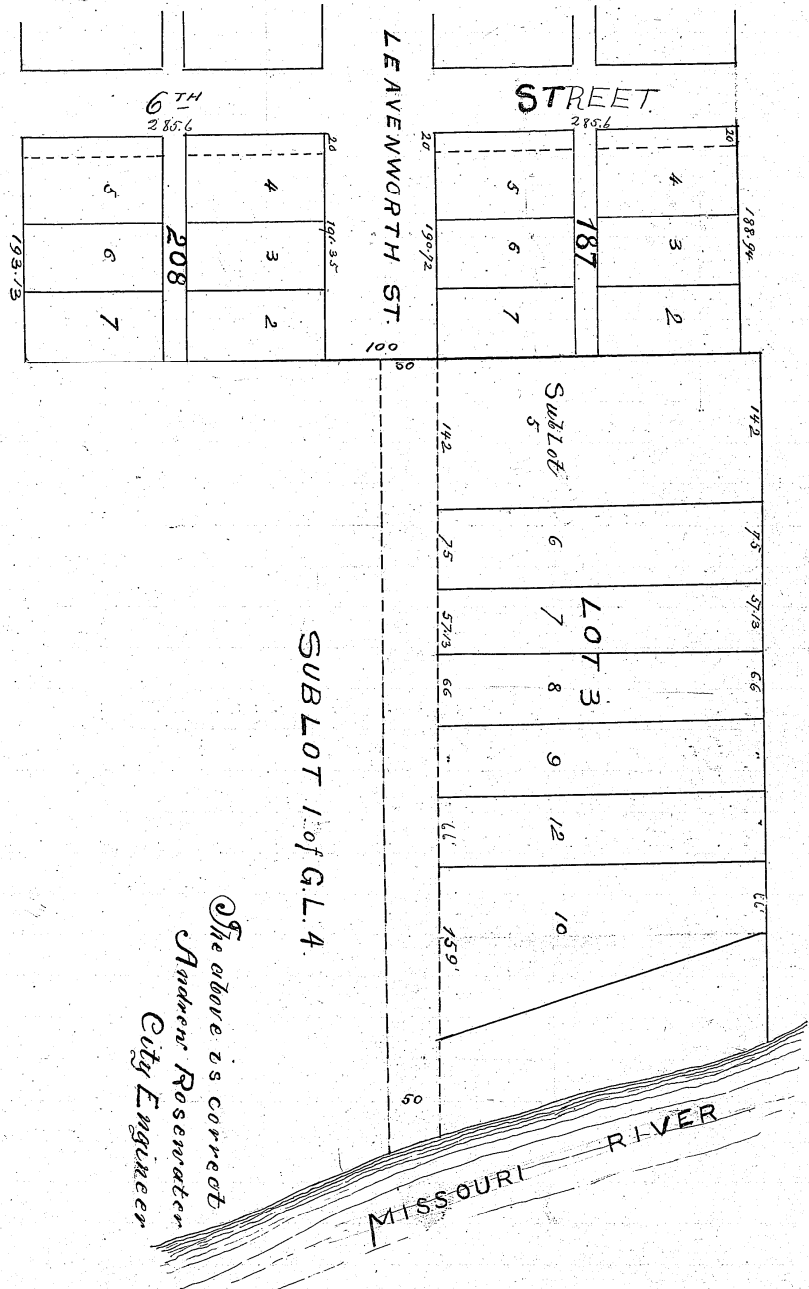


Leavenworth St



LEAVENWORTH ST
 From 6th Street to the Missouri River
 Opened by Ordinance No. 1604 Dec 12 1887
 Scale 1" = 100 ft

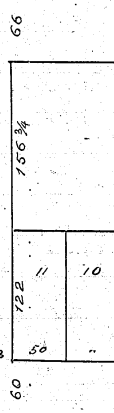
SUBLOT 1. of G.L.A.

The above is correct
 Andrew Rosenwaters
 City Engineer

Entered on Numerical Index
 and Record Nov 10th A.D. 1894 at 11³⁰ o'clock A.M. } City E. Cleason
 Register of Deeds

STREET

24TH



Entered on
 and Record
 1894 at 11