

20130505
JUN 24 2016 10:47 P 12

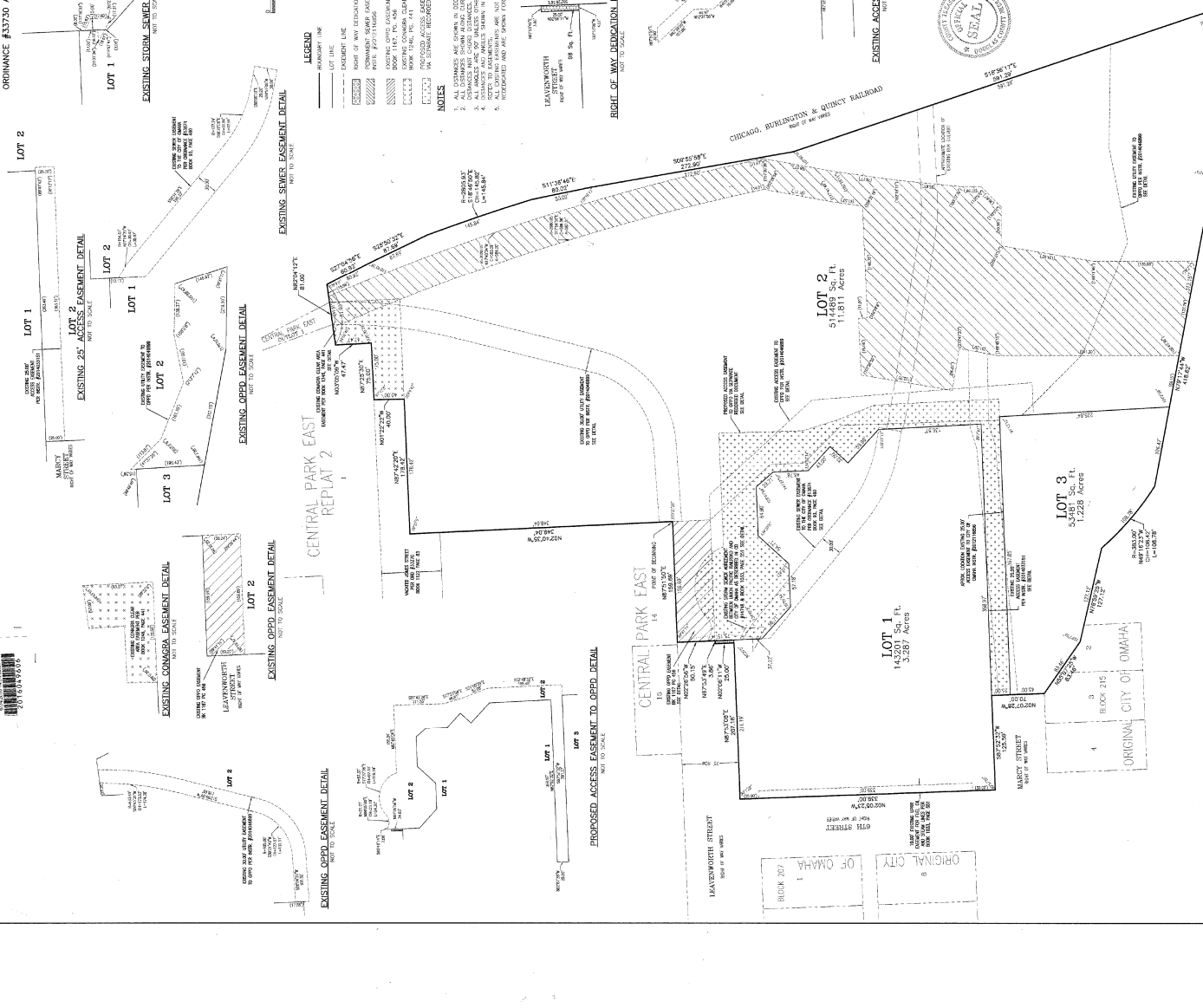
POWER STATION
LOTS 1 THROUGH 3, INCLUSIVE POWER STATION BEING A REPARATING OF LOTS 1 AND 2
POWERHOUSE, TOGETHER WITH THAT PART OF VACATED LEAVENWORTH STREET AS DESCRIBED IN
ORDINANCE #33730 AND RECORDED IN BOOK 1189, PAGE 249, ALL IN DOUGLAS COUNTY, NEBRASKA.

LOCATED IN:
NW 1/4 SW 1/4 SEC. 23-15-12
SW 1/4 SW 1/4 SEC. 23-15-12
SW 1/4 SW 1/4 SEC. 23-15-12
SW 1/4 SW 1/4 SEC. 23-15-12
SW 1/4 SW 1/4 SEC. 23-15-12

LAND SURVEYOR'S CERTIFICATE
I, the undersigned, being duly sworn, do hereby certify that the foregoing plat and map were prepared by me or under my direct supervision and that I am a duly licensed land surveyor in the State of Nebraska. I further certify that the plat and map were prepared in accordance with the laws and regulations of the State of Nebraska, and that the same are true and correct to the best of my knowledge and belief.

DATE: 1-14-2015

ACKNOWLEDGEMENT OF NOTARIES
I, the undersigned, being duly sworn, do hereby certify that the foregoing plat and map were prepared by me or under my direct supervision and that I am a duly licensed land surveyor in the State of Nebraska. I further certify that the plat and map were prepared in accordance with the laws and regulations of the State of Nebraska, and that the same are true and correct to the best of my knowledge and belief.



APPROVAL OF CITY ENGINEER OF OMAHA
I hereby approve this plat of POWER STATION, LOTS 1 THROUGH 3, INCLUSIVE AND THAT PART OF VACATED LEAVENWORTH STREET AS DESCRIBED IN ORDINANCE #33730 AND RECORDED IN BOOK 1189, PAGE 249, ALL IN DOUGLAS COUNTY, NEBRASKA.

APPROVAL OF OMAHA CITY COUNCIL
I hereby approve this plat of POWER STATION, LOTS 1 THROUGH 3, INCLUSIVE AND THAT PART OF VACATED LEAVENWORTH STREET AS DESCRIBED IN ORDINANCE #33730 AND RECORDED IN BOOK 1189, PAGE 249, ALL IN DOUGLAS COUNTY, NEBRASKA.

POWER STATION (LOTS 1 THROUGH 3, INCLUSIVE)
OMAHA, DOUGLAS COUNTY, NEBRASKA

LAMP RYENARSON & ASSOCIATES
14710 West Dodge Road, Suite 100
Omaha, Nebraska 68154-2027
402.496.2391
www.lra-inc.com

OMAHA, DOUGLAS COUNTY, NEBRASKA

PLAT

BOOK PAGE
1189 249

DATE
1-14-2015

SHEET
1