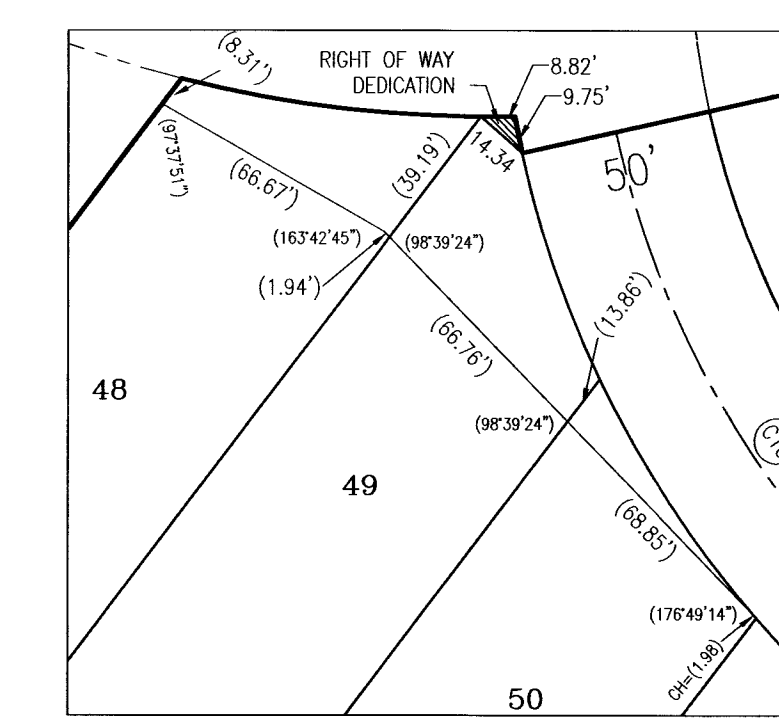
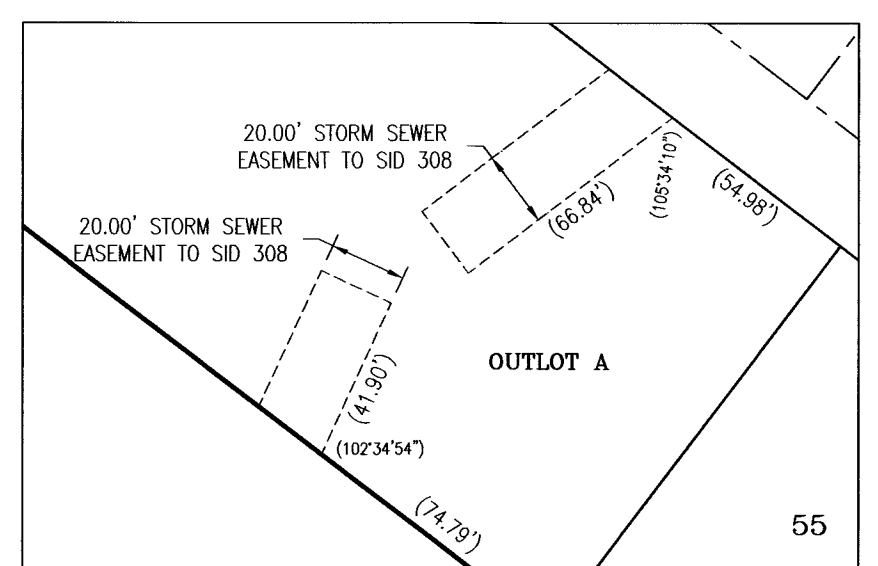
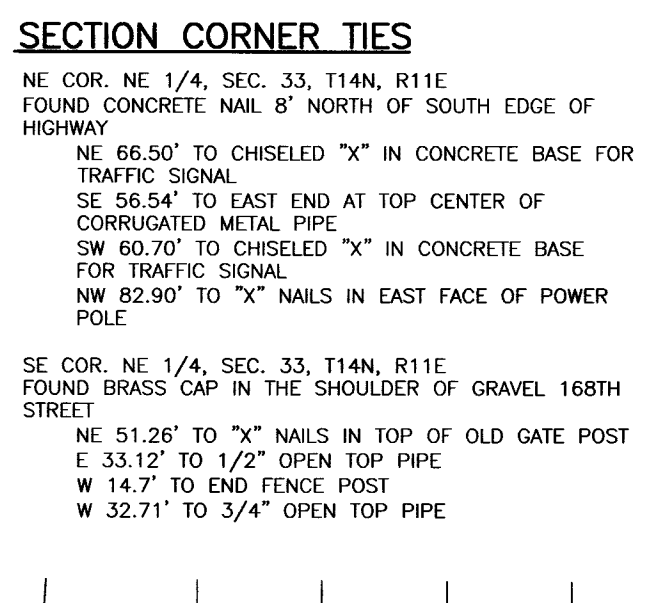
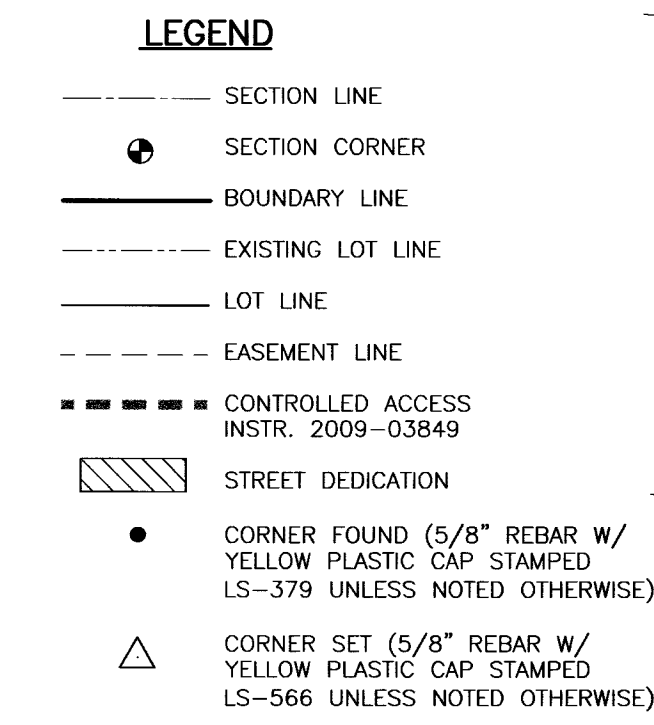
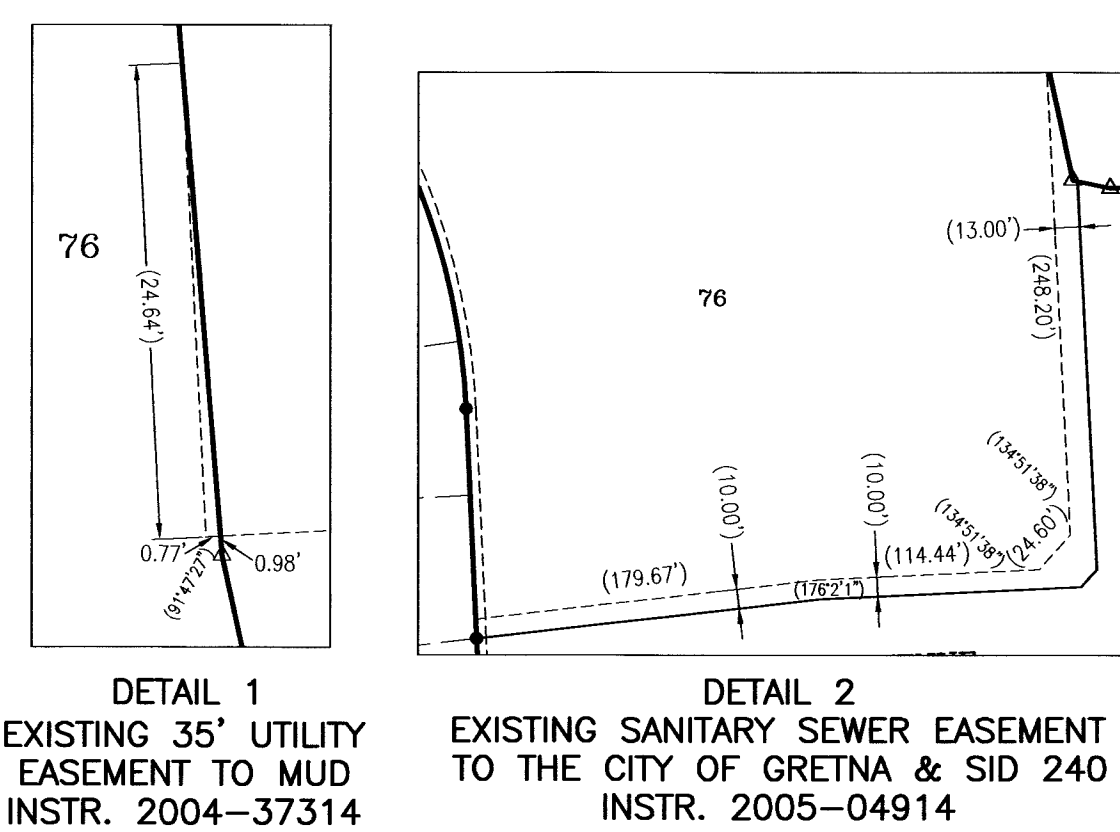


LOCATED IN:
NW 1/4 NE 1/4 SECTION 33, T14N, R11E
NE 1/4 NE 1/4 SECTION 33, T14N, R11E
SW 1/4 NE 1/4 SECTION 33, T14N, R11E
SE 1/4 NE 1/4 SECTION 33, T14N, R11E

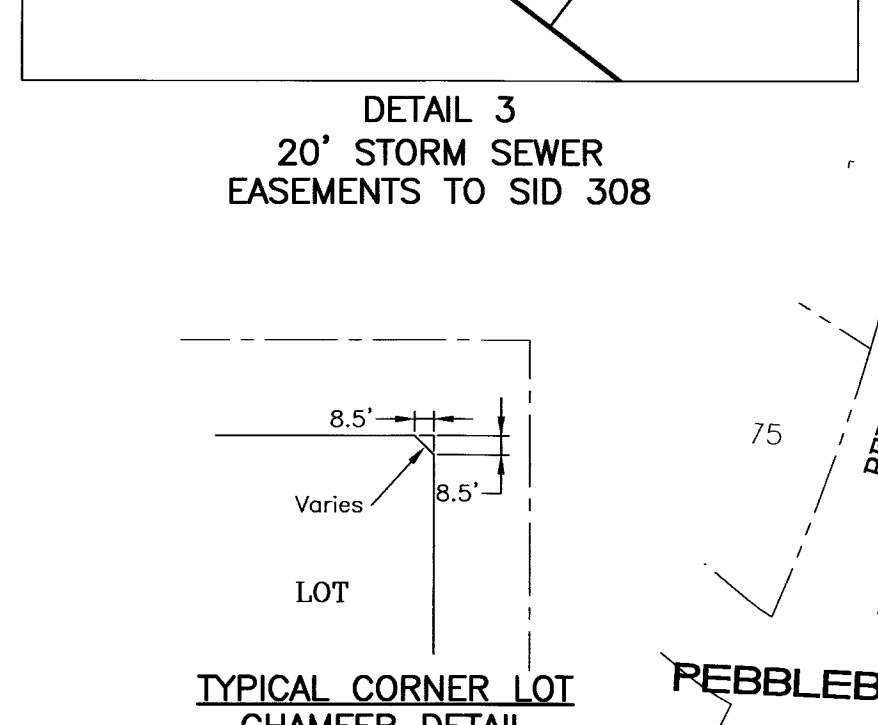
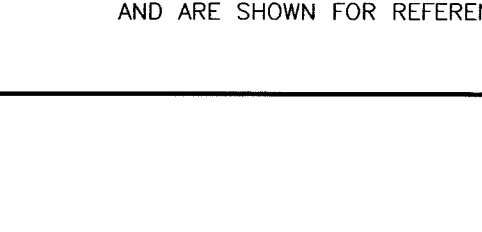
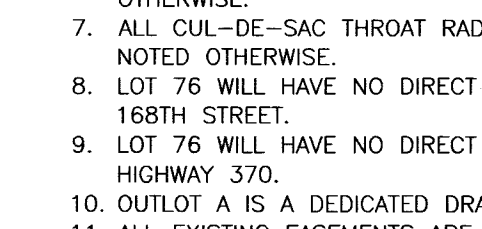
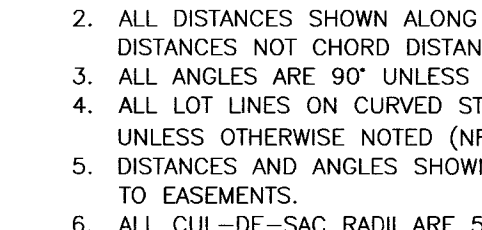
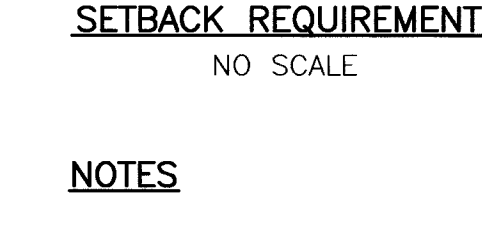
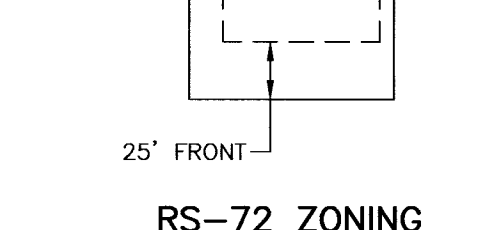
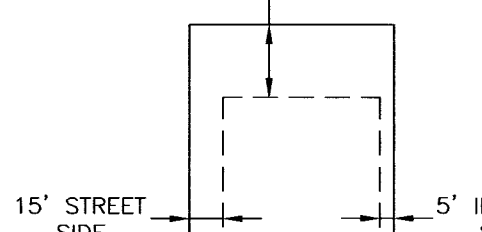
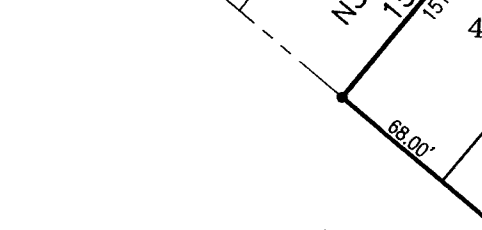
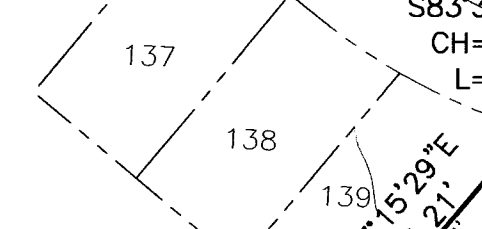
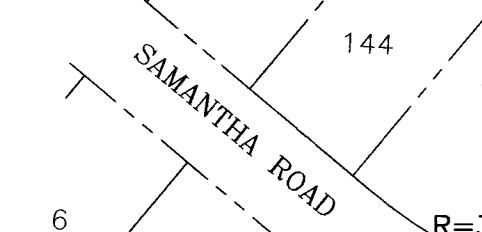
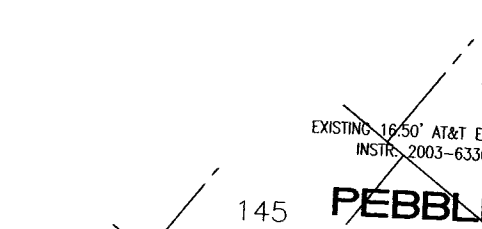
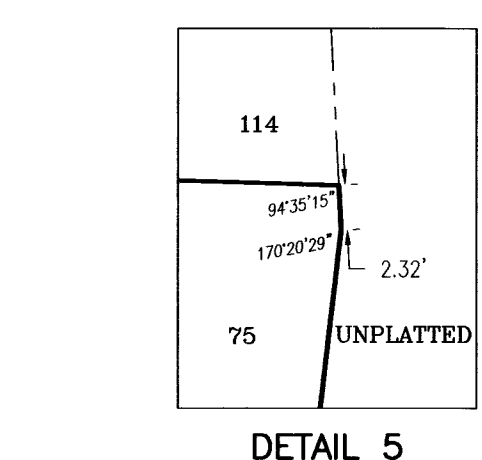
PEBBLEBROOKE 2

LOTS 1 THROUGH 76, INCLUSIVE AND OUTLOT A, BEING A PLATTING OF PART OF THE NORTHEAST QUARTER OF SECTION 33, TOWNSHIP 14 NORTH, RANGE 11 EAST OF THE 6TH P.M., SARPY COUNTY, NEBRASKA.

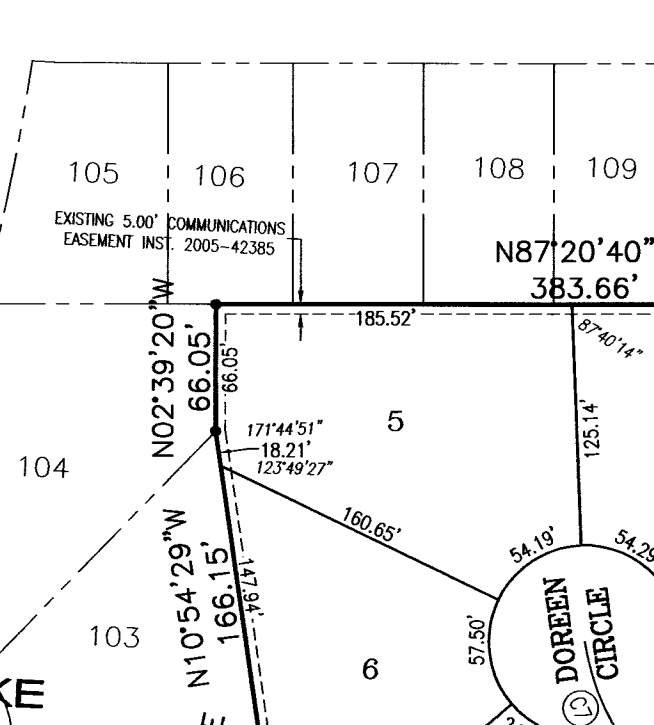
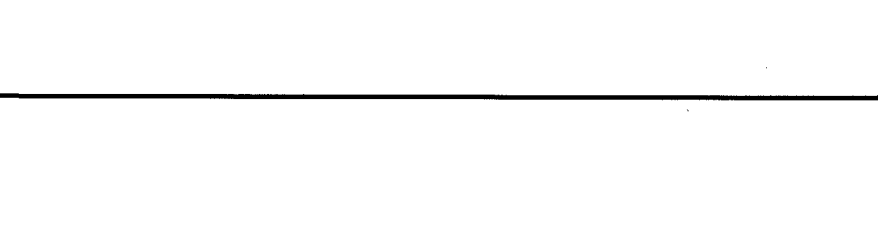
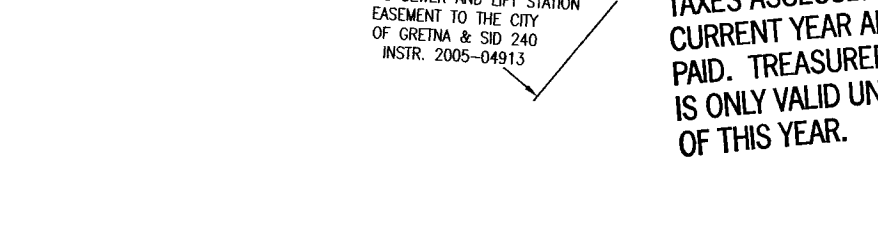
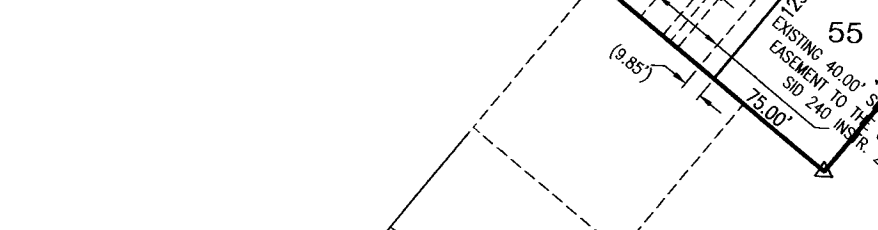
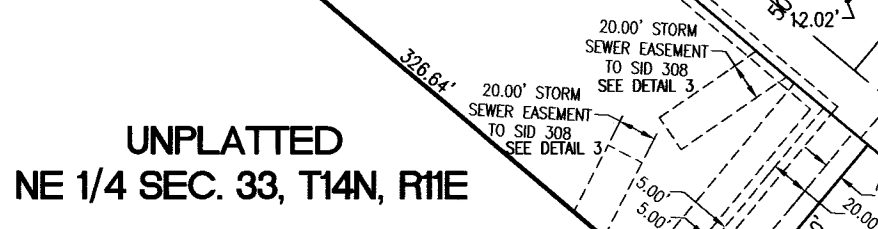
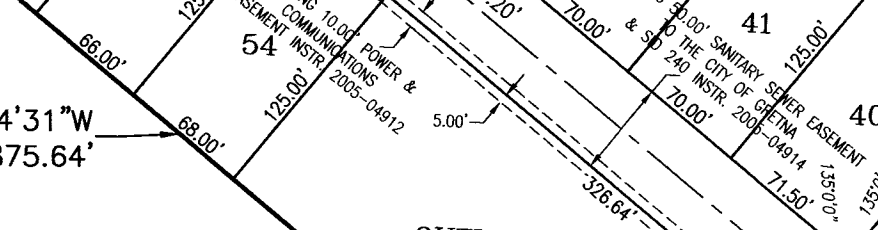
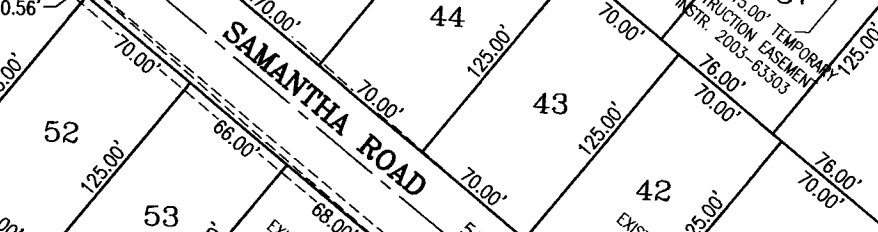
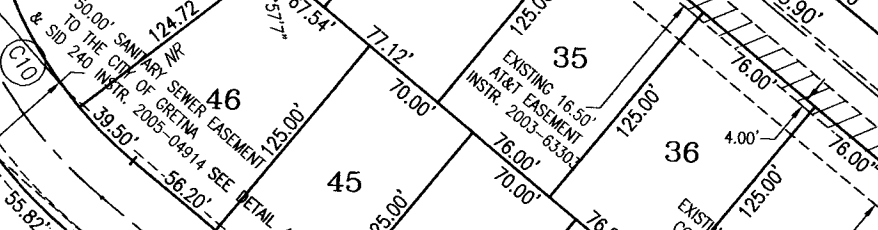
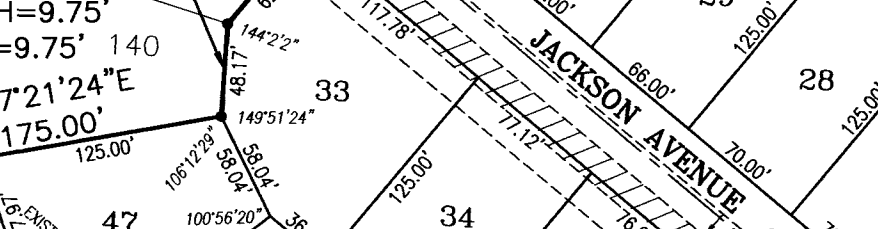
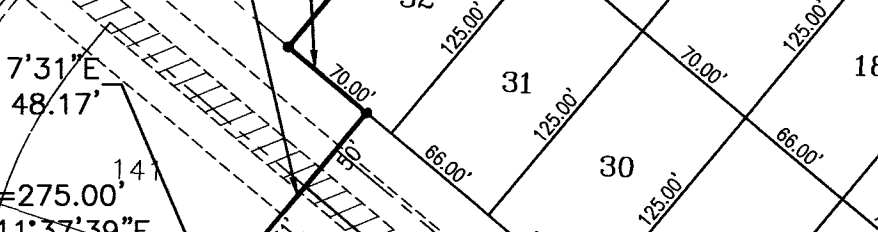
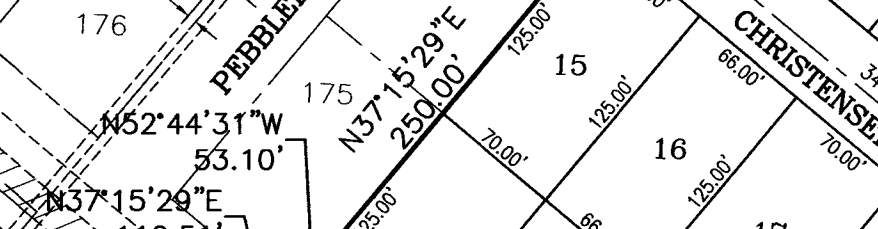
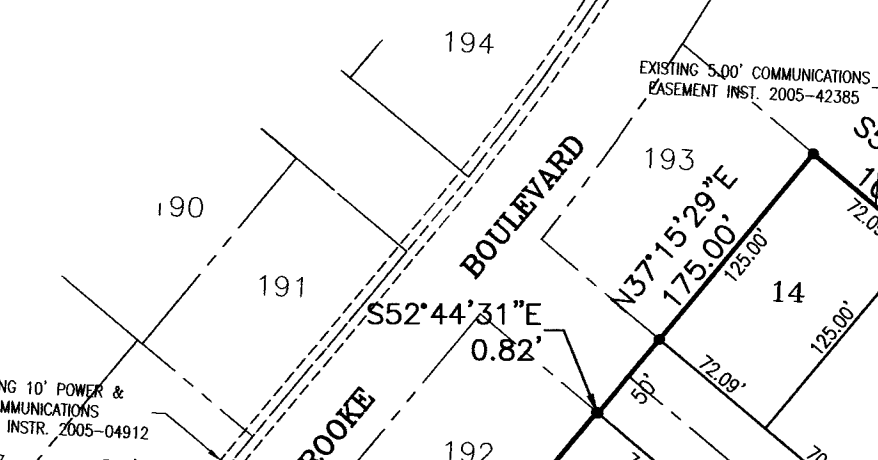
Parcel #	Area (SF)	Parcel #	Area (SF)
1	12899	41	8750
2	12898	42	8750
3	15130	43	8750
4	21509	44	8750
5	22853	45	8750
6	18378	46	10193
7	11124	47	11193
8	11291	48	11498
9	11758	49	11563
10	13602	50	9883
11	11504	51	8304
12	8750	52	8750
13	8750	53	8250
14	9012	54	8500
15	8750	55	9375
16	8250	56	9964
17	8750	57	9964
18	8250	58	10714
19	8750	59	9964
20	8750	60	8750
21	8750	61	8750
22	8750	62	8750
23	9964	63	8750
24	9964	64	8563
25	8750	65	11229
26	8750	66	11698
27	8750	67	10709
28	8750	68	12761
29	8750	69	13717
30	8750	70	8242
31	8250	71	12395
32	8750	72	10221
33	12883	73	10202
34	9640	74	10682
35	9500	75	10789
36	9500	76	173637
37	9500		
38	9500		
39	9964		
40	9964		



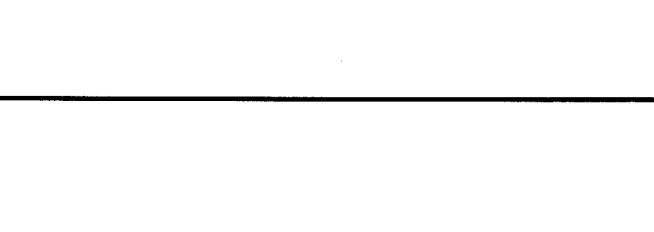
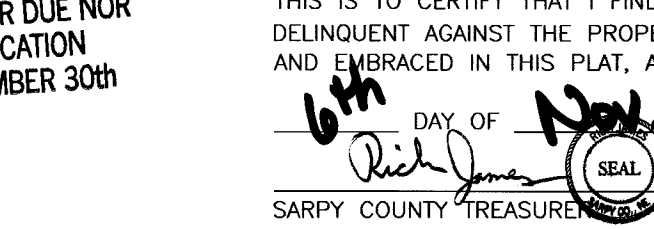
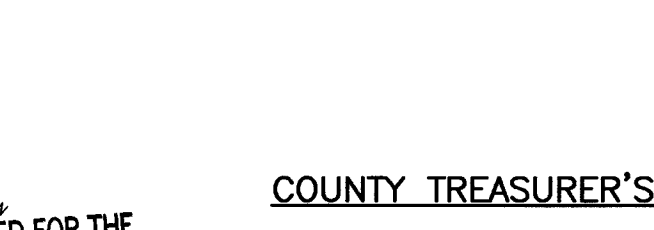
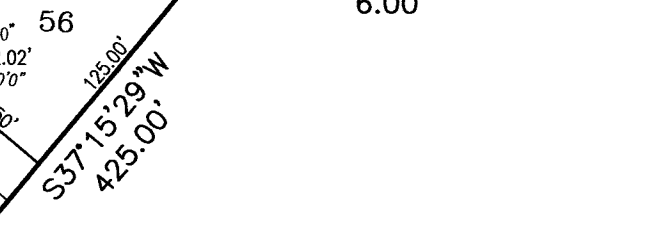
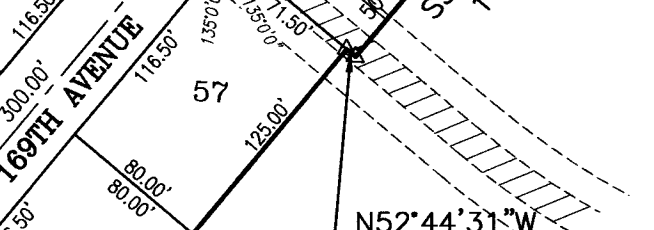
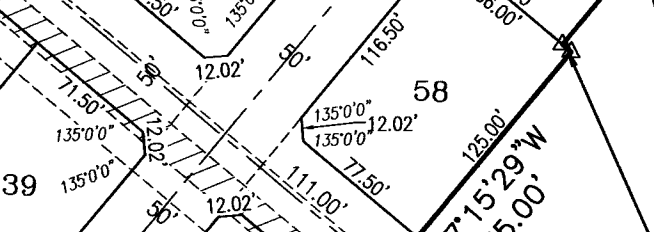
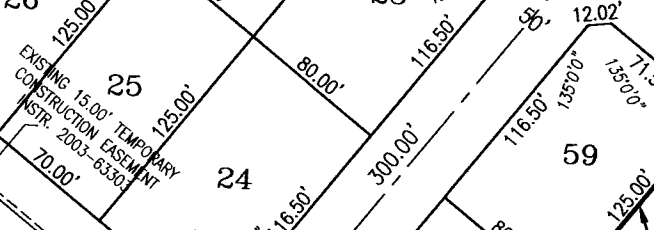
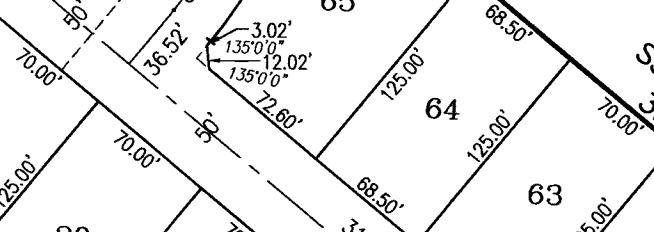
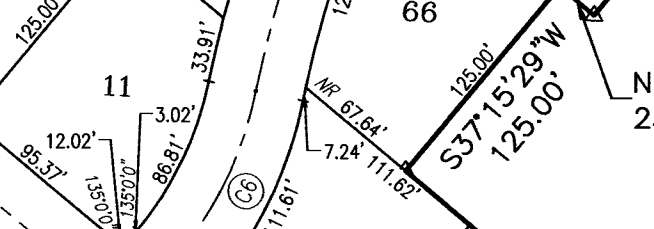
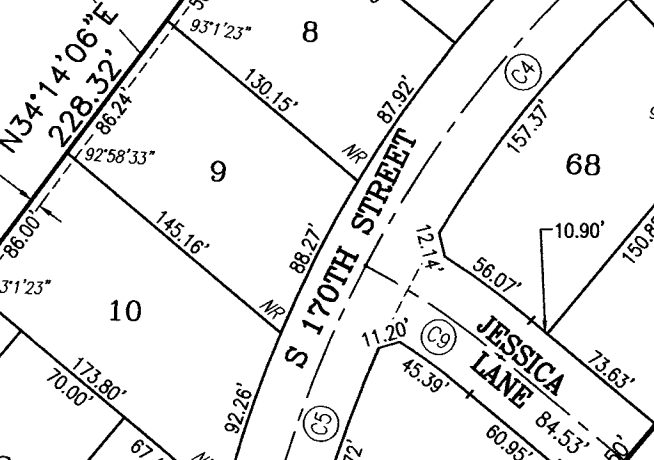
EXISTING 50' SANITARY SEWER EASEMENT TO THE CITY OF GREINA & SID 240 INSTR. 2005-14914, LOT 253 CORNER CHAMFER



EXISTING 50' SANITARY SEWER EASEMENT TO THE CITY OF GREINA & SID 240 INSTR. 2005-14914, LOT 253 CORNER CHAMFER



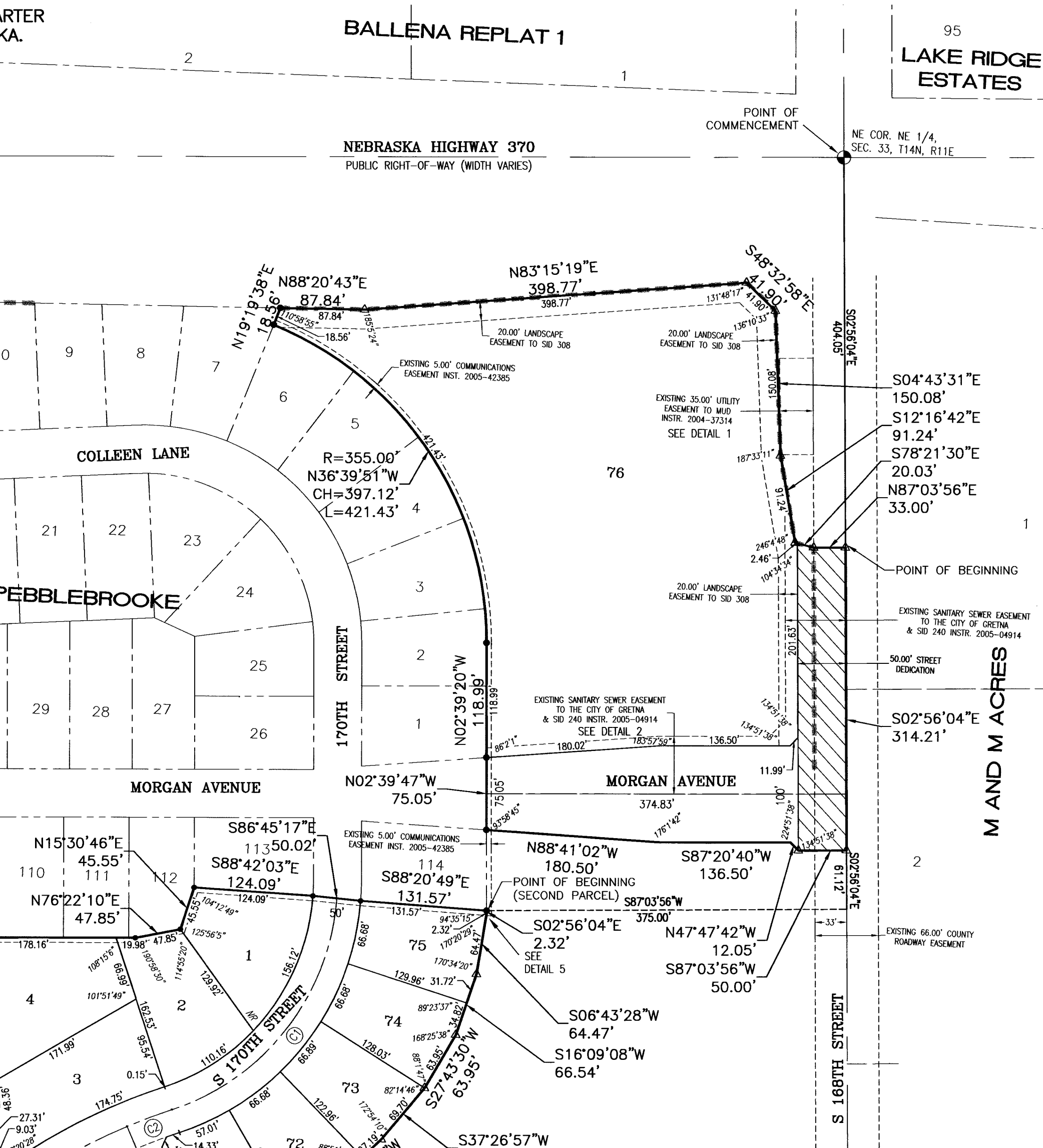
EXISTING 50' SANITARY SEWER EASEMENT TO THE CITY OF GREINA & SID 240 INSTR. 2005-14914, LOT 253 CORNER CHAMFER



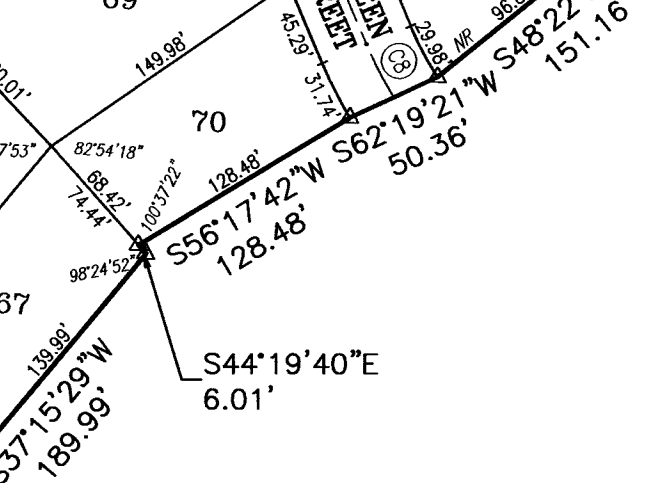
CURVE #	RADIUS	ARC LENGTH	CHORD LENGTH	DELTA ANGLE
C1	350.00	295.19	278.34	67.3907°
C2	600.00	49.92	49.91	4.4602°
C3	600.00	150.00	149.61	14.1928°
C4	600.00	281.20	250.14	24.5633°
C5	600.00	170.44	169.87	16.1633°
C6	300.00	99.21	98.20	29.2918°
C7	125.00	62.86	62.20	29.4648°
C8	300.00	30.86	30.83	8.9923°
C9	400.00	84.79	84.43	12.9814°
C10	350.00	174.96	171.41	40.9650°

COUNTY TREASURER'S CERTIFICATE: THIS IS TO CERTIFY THAT I FIND NO REGULAR NOR SPECIAL TAXES DUE OR DELINQUENT AGAINST THE PROPERTY DESCRIBED IN THE LAND SURVEYOR'S CERTIFICATE AND EMBRACED IN THIS PLAT, AS SHOWN BY THE RECORDS OF THIS OFFICE, THIS DAY OF OCTOBER 2015.

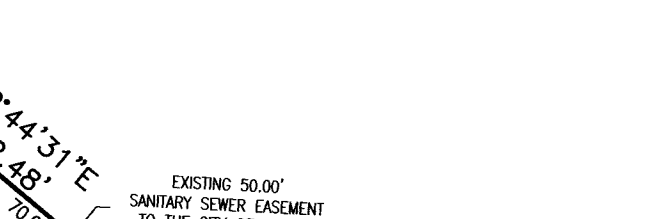
SARPY COUNTY SURVEYOR PUBLIC WORKS: THIS PLAT OF PEBBLEBROOKE 2 (LOTS 1 THROUGH 76, INCLUSIVE AND OUTLOT A) WAS REVIEWED BY THE SARPY COUNTY SURVEYOR'S OFFICE ON THIS 28th DAY OF OCTOBER 2015.



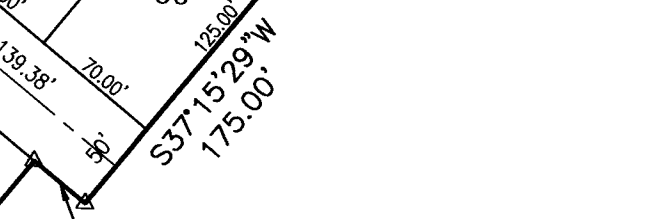
UNPLATTED NE 1/4 SEC. 33, T14N, R11E



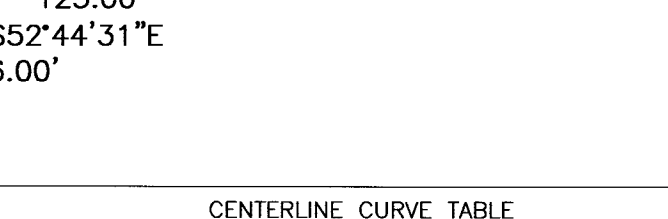
UNPLATTED NE 1/4 SEC. 33, T14N, R11E



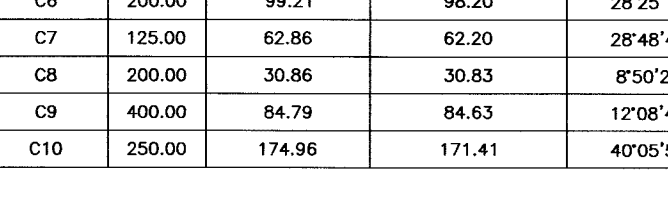
UNPLATTED NE 1/4 SEC. 33, T14N, R11E



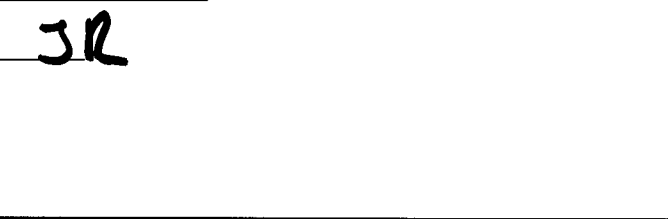
UNPLATTED NE 1/4 SEC. 33, T14N, R11E



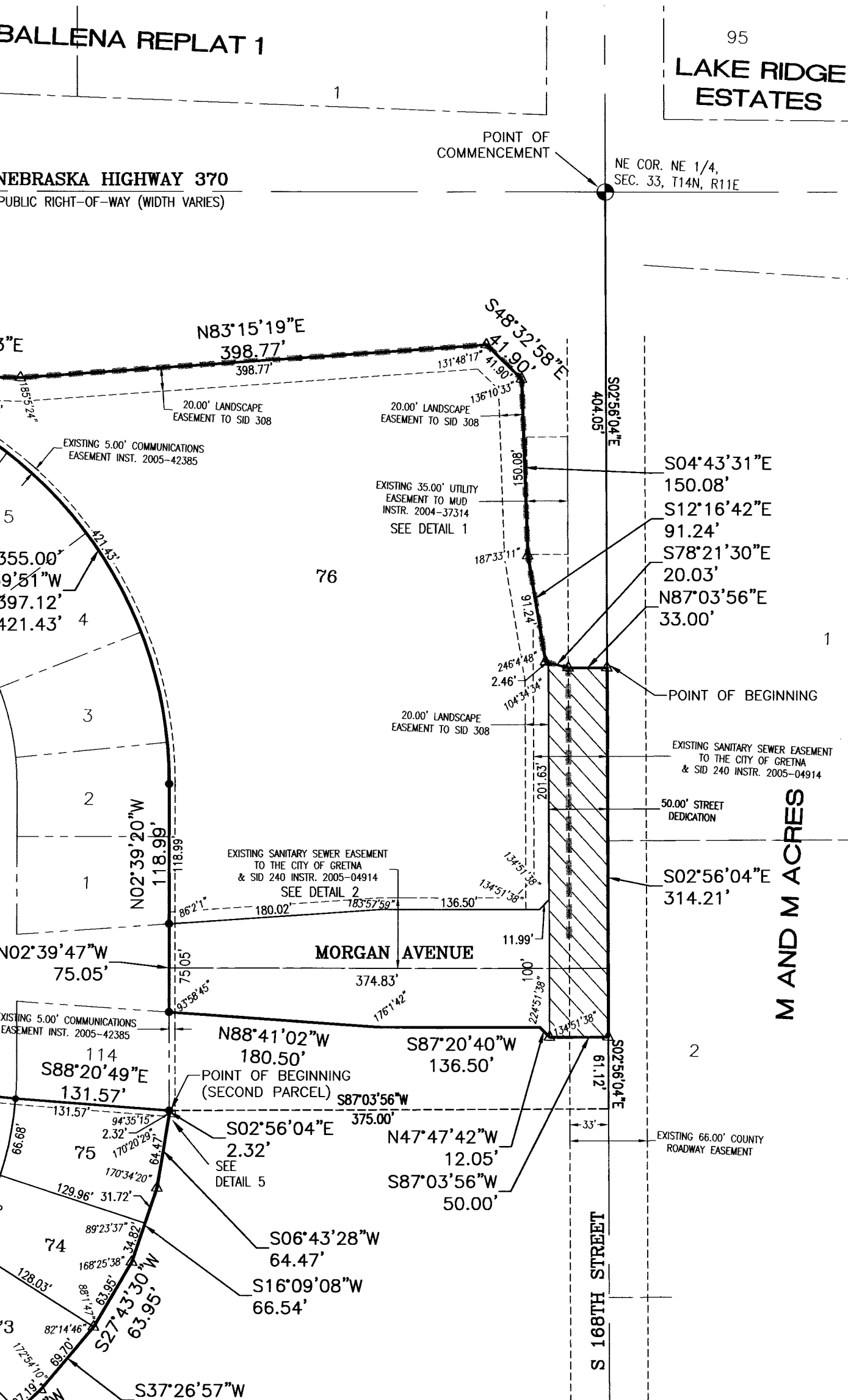
UNPLATTED NE 1/4 SEC. 33, T14N, R11E



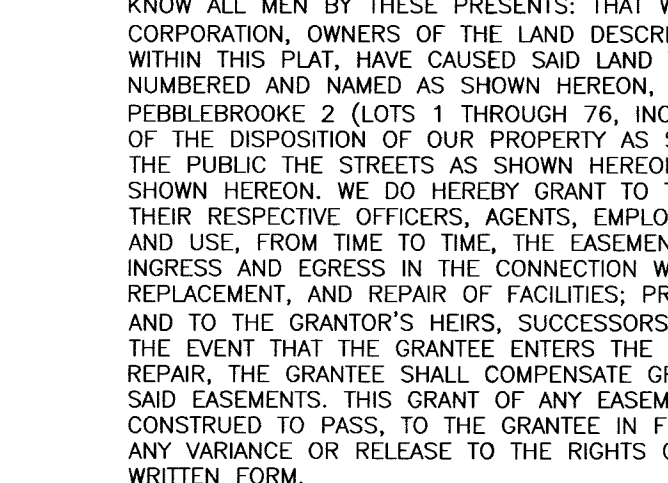
UNPLATTED NE 1/4 SEC. 33, T14N, R11E



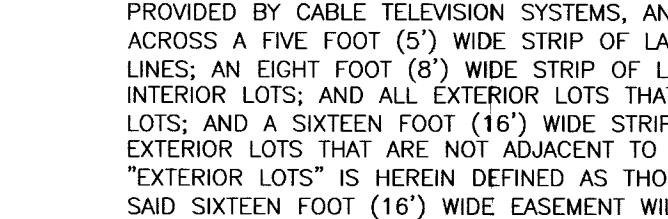
UNPLATTED NE 1/4 SEC. 33, T14N, R11E



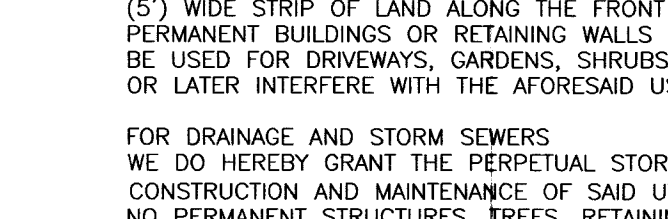
UNPLATTED NE 1/4 SEC. 33, T14N, R11E



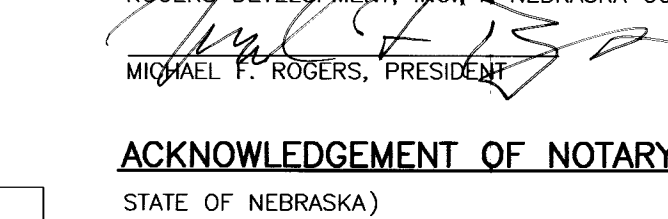
UNPLATTED NE 1/4 SEC. 33, T14N, R11E



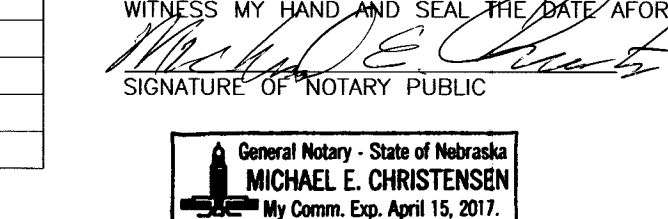
UNPLATTED NE 1/4 SEC. 33, T14N, R11E



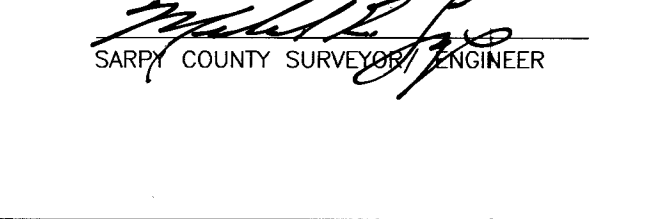
UNPLATTED NE 1/4 SEC. 33, T14N, R11E



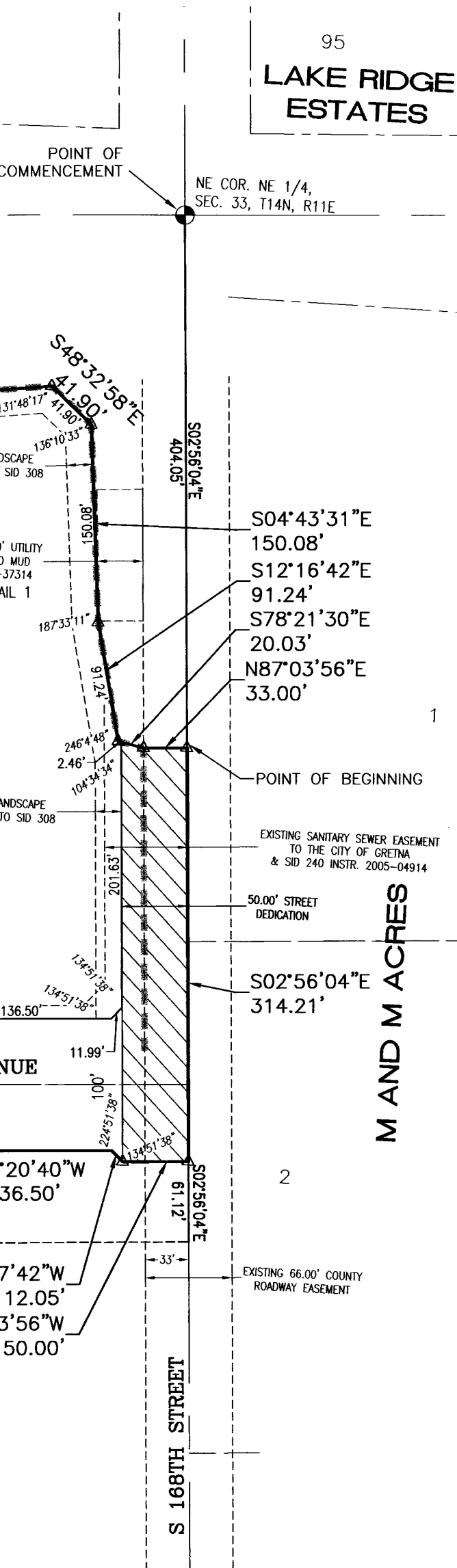
UNPLATTED NE 1/4 SEC. 33, T14N, R11E



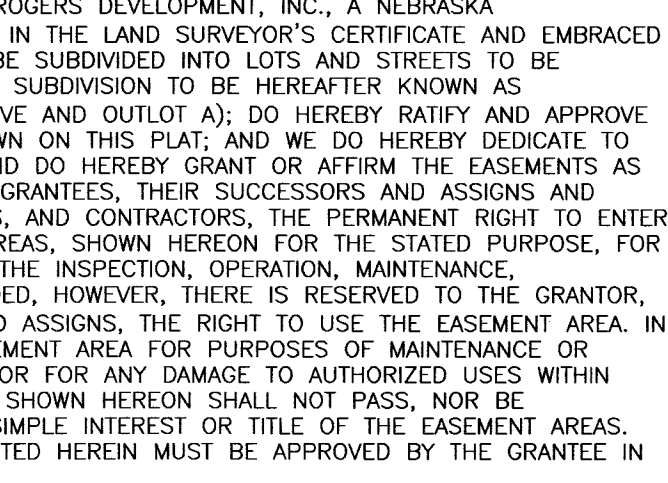
UNPLATTED NE 1/4 SEC. 33, T14N, R11E



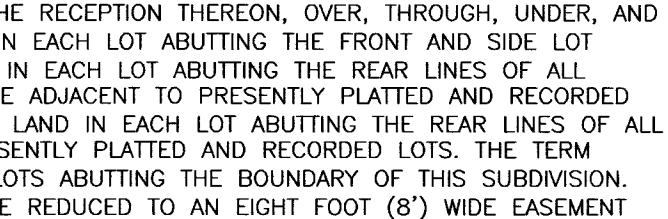
UNPLATTED NE 1/4 SEC. 33, T14N, R11E



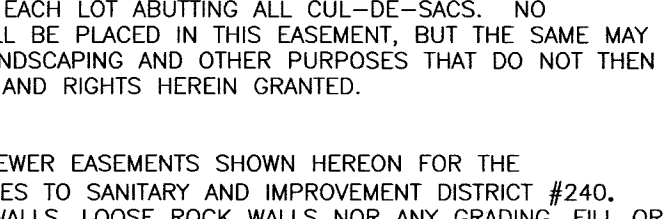
UNPLATTED NE 1/4 SEC. 33, T14N, R11E



UNPLATTED NE 1/4 SEC. 33, T14N, R11E



UNPLATTED NE 1/4 SEC. 33, T14N, R11E



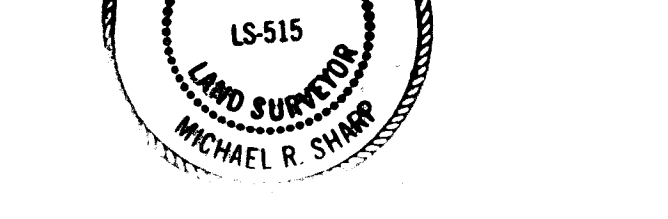
UNPLATTED NE 1/4 SEC. 33, T14N, R11E



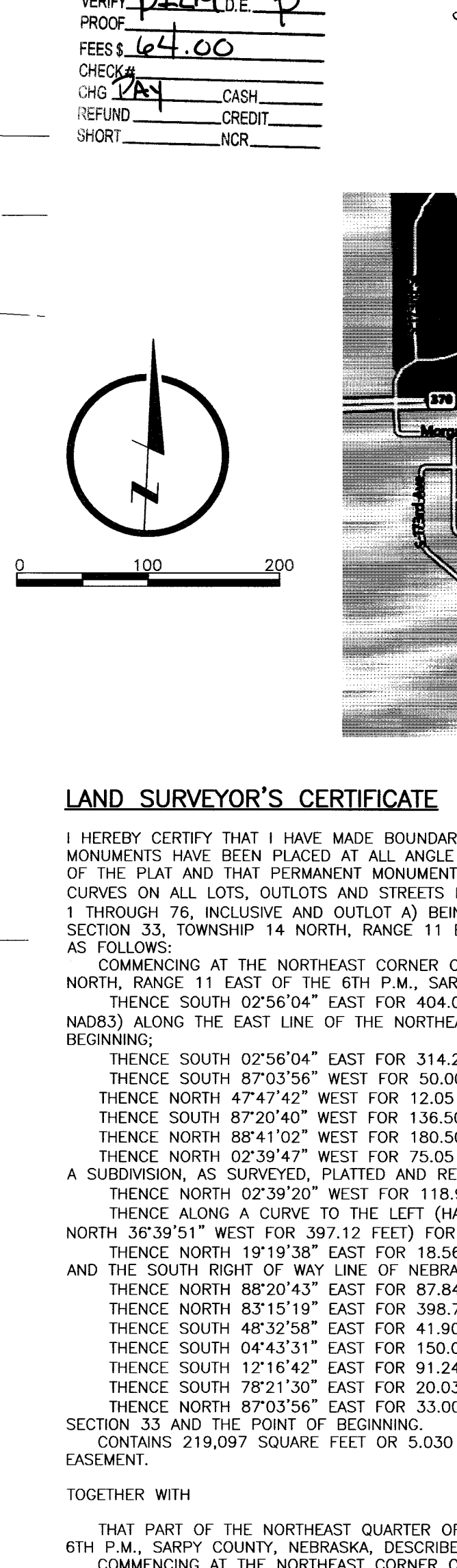
UNPLATTED NE 1/4 SEC. 33, T14N, R11E



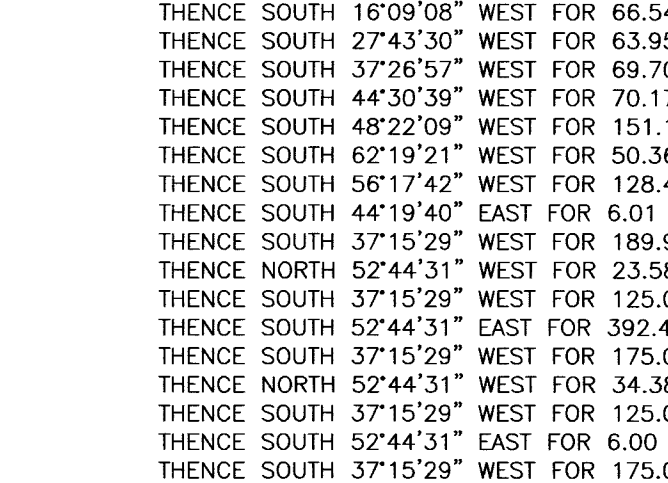
UNPLATTED NE 1/4 SEC. 33, T14N, R11E



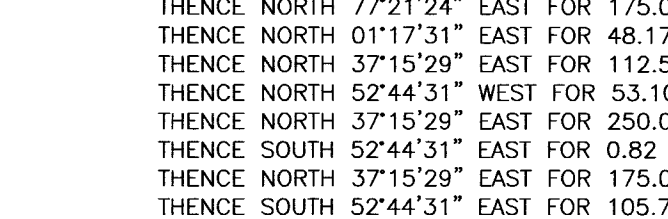
UNPLATTED NE 1/4 SEC. 33, T14N, R11E



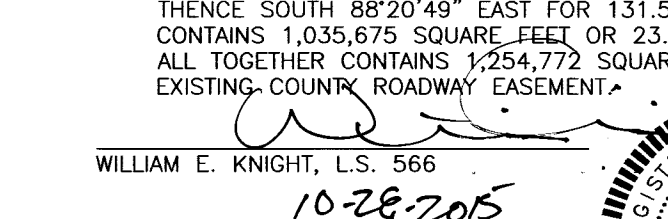
UNPLATTED NE 1/4 SEC. 33, T14N, R11E



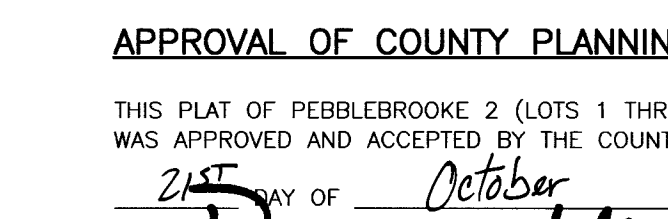
UNPLATTED NE 1/4 SEC. 33, T14N, R11E



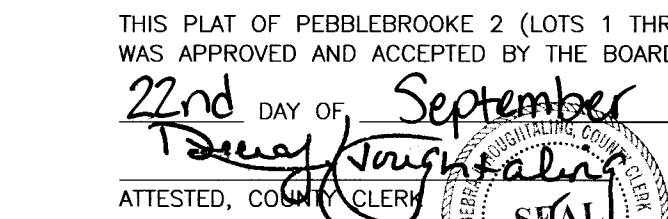
UNPLATTED NE 1/4 SEC. 33, T14N, R11E



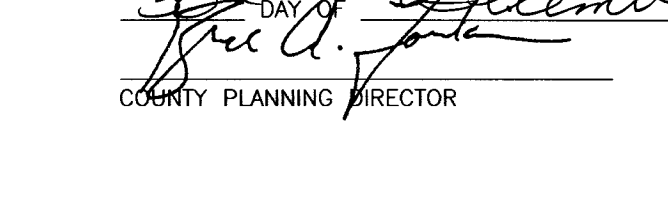
UNPLATTED NE 1/4 SEC. 33, T14N, R11E



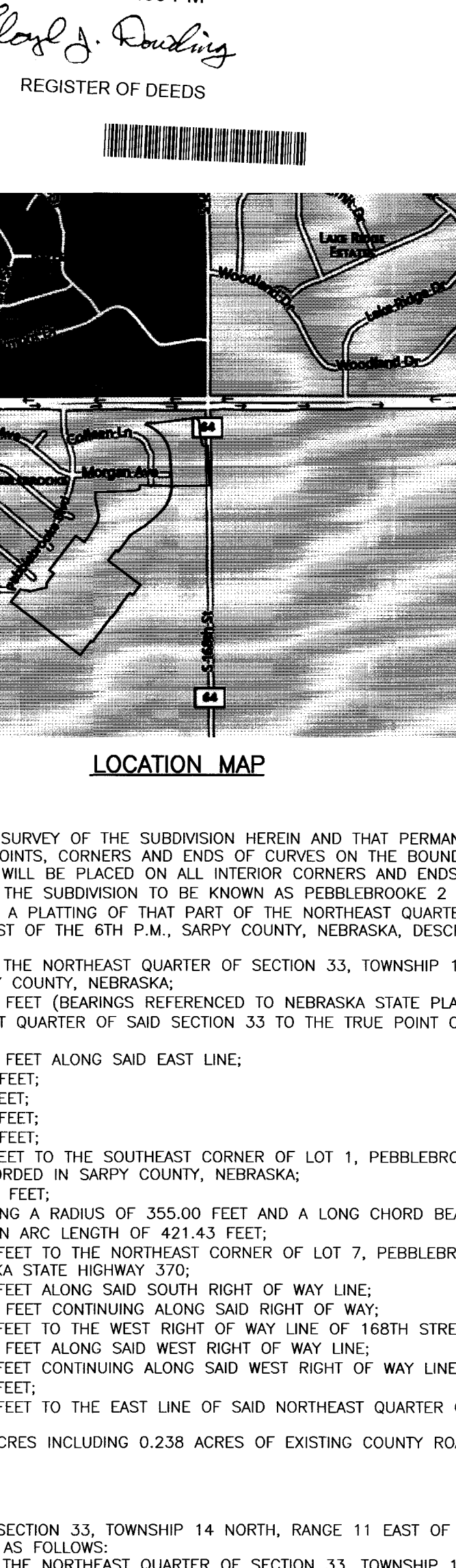
UNPLATTED NE 1/4 SEC. 33, T14N, R11E



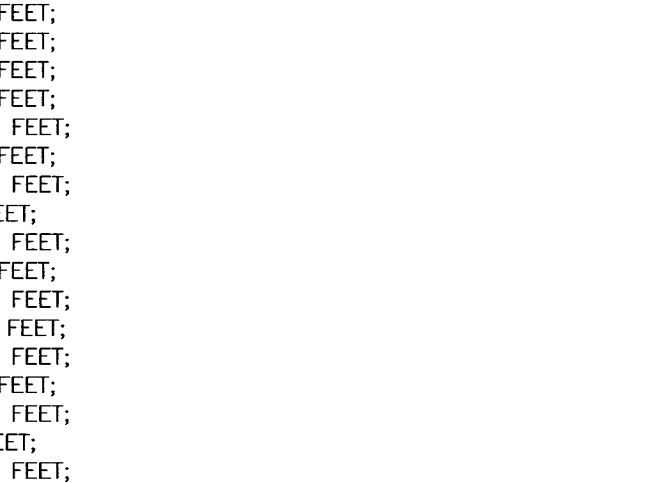
UNPLATTED NE 1/4 SEC. 33, T14N, R11E



UNPLATTED NE 1/4 SEC. 33, T14N, R11E



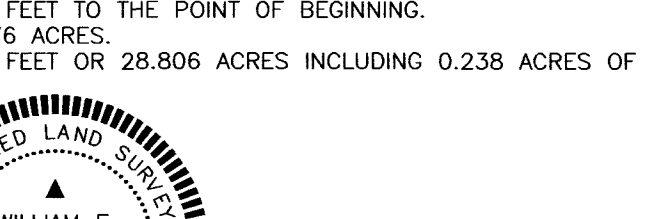
UNPLATTED NE 1/4 SEC. 33, T14N, R11E



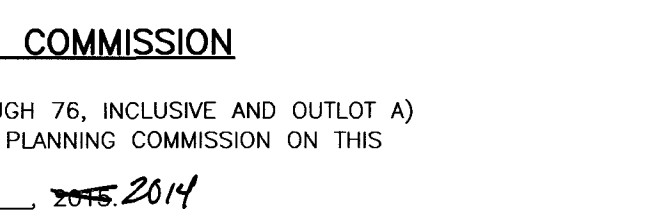
UNPLATTED NE 1/4 SEC. 33, T14N, R11E



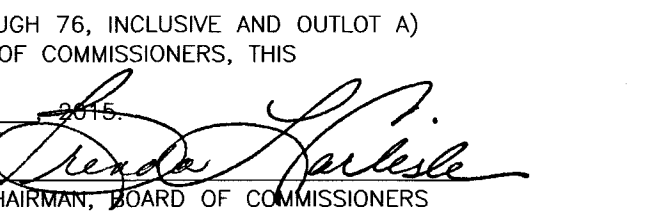
UNPLATTED NE 1/4 SEC. 33, T14N, R11E



UNPLATTED NE 1/4 SEC. 33, T14N, R11E



UNPLATTED NE 1/4 SEC. 33, T14N, R11E



UNPLATTED NE 1/4 SEC. 33, T14N, R11E



UNPLATTED NE 1/4 SEC. 33, T14N, R11E

FILED SARPY COUNTY NEBRASKA INSTRUMENT NUMBER 2015