



2128 001 DEED



10314 99 001-031

Nebr Doc Stamp Tax
7-27-99
Date
\$ 4800.00
By <i>[Signature]</i>

RICHARD N. TAKECHI  
REGISTER OF DEEDS  
DOUGLAS COUNTY, NE

99 JUL 27 PM 3:05

RECEIVED

**THIS PAGE INCLUDED FOR INDEXING**

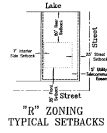
**PAGE DOWN FOR BALANCE OF INSTRUMENT**

10314 New # 05-02879  
01-60000 (old)

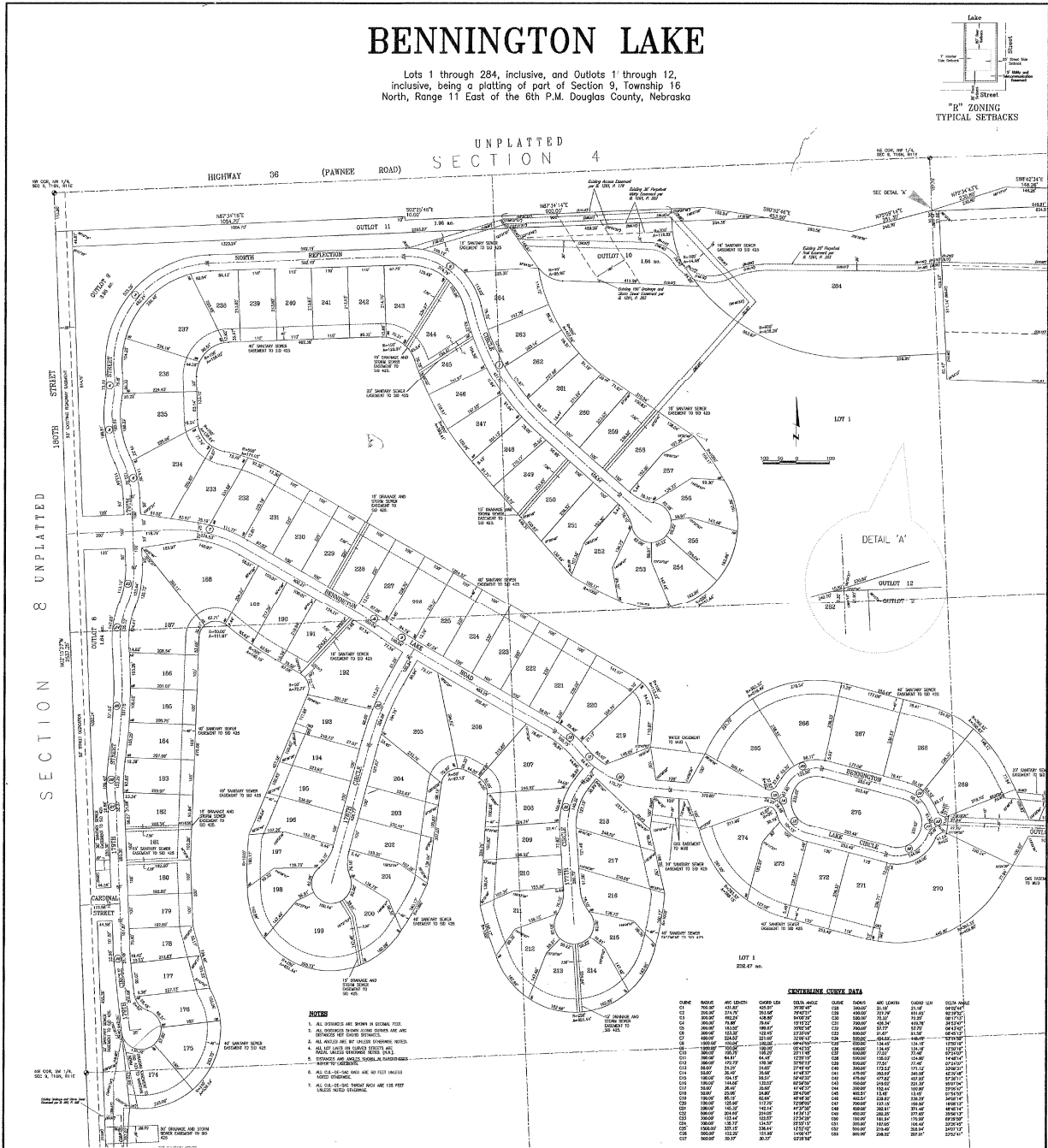
FEE	30330	FB	
EXP		CO	COMP <sup>B</sup>
DEL		SCAN	PI

# BENNINGTON LAKE

Lots 1 through 284, inclusive, and Outlots 1 through 12, inclusive, being a platting of part of Section 9, Township 16 North, Range 11 East of the 6th P.M. Douglas County, Nebraska



## UNPLATTED SECTION 4



**CENTERSHIRE CURVE DATA**

CHORD	BEARS	ARC LENGTH	CHORD BEARS	ARC LENGTH	CHORD BEARS	ARC LENGTH	CHORD BEARS	ARC LENGTH
01	100.00	1.5708	0.0000	0.0000	0.0000	0.0000	0.0000	0.0000
02	100.00	3.1416	0.0000	0.0000	0.0000	0.0000	0.0000	0.0000
03	100.00	4.7124	0.0000	0.0000	0.0000	0.0000	0.0000	0.0000
04	100.00	6.2832	0.0000	0.0000	0.0000	0.0000	0.0000	0.0000
05	100.00	7.8540	0.0000	0.0000	0.0000	0.0000	0.0000	0.0000
06	100.00	9.4248	0.0000	0.0000	0.0000	0.0000	0.0000	0.0000
07	100.00	10.9956	0.0000	0.0000	0.0000	0.0000	0.0000	0.0000
08	100.00	12.5664	0.0000	0.0000	0.0000	0.0000	0.0000	0.0000
09	100.00	14.1372	0.0000	0.0000	0.0000	0.0000	0.0000	0.0000
10	100.00	15.7080	0.0000	0.0000	0.0000	0.0000	0.0000	0.0000
11	100.00	17.2788	0.0000	0.0000	0.0000	0.0000	0.0000	0.0000
12	100.00	18.8496	0.0000	0.0000	0.0000	0.0000	0.0000	0.0000
13	100.00	20.4204	0.0000	0.0000	0.0000	0.0000	0.0000	0.0000
14	100.00	21.9912	0.0000	0.0000	0.0000	0.0000	0.0000	0.0000
15	100.00	23.5620	0.0000	0.0000	0.0000	0.0000	0.0000	0.0000
16	100.00	25.1328	0.0000	0.0000	0.0000	0.0000	0.0000	0.0000
17	100.00	26.7036	0.0000	0.0000	0.0000	0.0000	0.0000	0.0000
18	100.00	28.2744	0.0000	0.0000	0.0000	0.0000	0.0000	0.0000
19	100.00	29.8452	0.0000	0.0000	0.0000	0.0000	0.0000	0.0000
20	100.00	31.4160	0.0000	0.0000	0.0000	0.0000	0.0000	0.0000
21	100.00	32.9868	0.0000	0.0000	0.0000	0.0000	0.0000	0.0000
22	100.00	34.5576	0.0000	0.0000	0.0000	0.0000	0.0000	0.0000
23	100.00	36.1284	0.0000	0.0000	0.0000	0.0000	0.0000	0.0000
24	100.00	37.6992	0.0000	0.0000	0.0000	0.0000	0.0000	0.0000
25	100.00	39.2700	0.0000	0.0000	0.0000	0.0000	0.0000	0.0000
26	100.00	40.8408	0.0000	0.0000	0.0000	0.0000	0.0000	0.0000
27	100.00	42.4116	0.0000	0.0000	0.0000	0.0000	0.0000	0.0000
28	100.00	43.9824	0.0000	0.0000	0.0000	0.0000	0.0000	0.0000
29	100.00	45.5532	0.0000	0.0000	0.0000	0.0000	0.0000	0.0000
30	100.00	47.1240	0.0000	0.0000	0.0000	0.0000	0.0000	0.0000
31	100.00	48.6948	0.0000	0.0000	0.0000	0.0000	0.0000	0.0000
32	100.00	50.2656	0.0000	0.0000	0.0000	0.0000	0.0000	0.0000
33	100.00	51.8364	0.0000	0.0000	0.0000	0.0000	0.0000	0.0000
34	100.00	53.4072	0.0000	0.0000	0.0000	0.0000	0.0000	0.0000
35	100.00	54.9780	0.0000	0.0000	0.0000	0.0000	0.0000	0.0000
36	100.00	56.5488	0.0000	0.0000	0.0000	0.0000	0.0000	0.0000
37	100.00	58.1196	0.0000	0.0000	0.0000	0.0000	0.0000	0.0000
38	100.00	59.6904	0.0000	0.0000	0.0000	0.0000	0.0000	0.0000
39	100.00	61.2612	0.0000	0.0000	0.0000	0.0000	0.0000	0.0000
40	100.00	62.8320	0.0000	0.0000	0.0000	0.0000	0.0000	0.0000
41	100.00	64.4028	0.0000	0.0000	0.0000	0.0000	0.0000	0.0000
42	100.00	65.9736	0.0000	0.0000	0.0000	0.0000	0.0000	0.0000
43	100.00	67.5444	0.0000	0.0000	0.0000	0.0000	0.0000	0.0000
44	100.00	69.1152	0.0000	0.0000	0.0000	0.0000	0.0000	0.0000
45	100.00	70.6860	0.0000	0.0000	0.0000	0.0000	0.0000	0.0000
46	100.00	72.2568	0.0000	0.0000	0.0000	0.0000	0.0000	0.0000
47	100.00	73.8276	0.0000	0.0000	0.0000	0.0000	0.0000	0.0000
48	100.00	75.3984	0.0000	0.0000	0.0000	0.0000	0.0000	0.0000
49	100.00	76.9692	0.0000	0.0000	0.0000	0.0000	0.0000	0.0000
50	100.00	78.5400	0.0000	0.0000	0.0000	0.0000	0.0000	0.0000
51	100.00	80.1108	0.0000	0.0000	0.0000	0.0000	0.0000	0.0000
52	100.00	81.6816	0.0000	0.0000	0.0000	0.0000	0.0000	0.0000
53	100.00	83.2524	0.0000	0.0000	0.0000	0.0000	0.0000	0.0000
54	100.00	84.8232	0.0000	0.0000	0.0000	0.0000	0.0000	0.0000
55	100.00	86.3940	0.0000	0.0000	0.0000	0.0000	0.0000	0.0000
56	100.00	87.9648	0.0000	0.0000	0.0000	0.0000	0.0000	0.0000
57	100.00	89.5356	0.0000	0.0000	0.0000	0.0000	0.0000	0.0000
58	100.00	91.1064	0.0000	0.0000	0.0000	0.0000	0.0000	0.0000
59	100.00	92.6772	0.0000	0.0000	0.0000	0.0000	0.0000	0.0000
60	100.00	94.2480	0.0000	0.0000	0.0000	0.0000	0.0000	0.0000
61	100.00	95.8188	0.0000	0.0000	0.0000	0.0000	0.0000	0.0000
62	100.00	97.3896	0.0000	0.0000	0.0000	0.0000	0.0000	0.0000
63	100.00	98.9604	0.0000	0.0000	0.0000	0.0000	0.0000	0.0000
64	100.00	100.5312	0.0000	0.0000	0.0000	0.0000	0.0000	0.0000
65	100.00	102.1020	0.0000	0.0000	0.0000	0.0000	0.0000	0.0000
66	100.00	103.6728	0.0000	0.0000	0.0000	0.0000	0.0000	0.0000
67	100.00	105.2436	0.0000	0.0000	0.0000	0.0000	0.0000	0.0000
68	100.00	106.8144	0.0000	0.0000	0.0000	0.0000	0.0000	0.0000
69	100.00	108.3852	0.0000	0.0000	0.0000	0.0000	0.0000	0.0000
70	100.00	109.9560	0.0000	0.0000	0.0000	0.0000	0.0000	0.0000
71	100.00	111.5268	0.0000	0.0000	0.0000	0.0000	0.0000	0.0000
72	100.00	113.0976	0.0000	0.0000	0.0000	0.0000	0.0000	0.0000
73	100.00	114.6684	0.0000	0.0000	0.0000	0.0000	0.0000	0.0000
74	100.00	116.2392	0.0000	0.0000	0.0000	0.0000	0.0000	0.0000
75	100.00	117.8100	0.0000	0.0000	0.0000	0.0000	0.0000	0.0000
76	100.00	119.3808	0.0000	0.0000	0.0000	0.0000	0.0000	0.0000
77	100.00	120.9516	0.0000	0.0000	0.0000	0.0000	0.0000	0.0000
78	100.00	122.5224	0.0000	0.0000	0.0000	0.0000	0.0000	0.0000
79	100.00	124.0932	0.0000	0.0000	0.0000	0.0000	0.0000	0.0000
80	100.00	125.6640	0.0000	0.0000	0.0000	0.0000	0.0000	0.0000
81	100.00	127.2348	0.0000	0.0000	0.0000	0.0000	0.0000	0.0000
82	100.00	128.8056	0.0000	0.0000	0.0000	0.0000	0.0000	0.0000
83	100.00	130.3764	0.0000	0.0000	0.0000	0.0000	0.0000	0.0000
84	100.00	131.9472	0.0000	0.0000	0.0000	0.0000	0.0000	0.0000
85	100.00	133.5180	0.0000	0.0000	0.0000	0.0000	0.0000	0.0000
86	100.00	135.0888	0.0000	0.0000	0.0000	0.0000	0.0000	0.0000
87	100.00	136.6596	0.0000	0.0000	0.0000	0.0000	0.0000	0.0000
88	100.00	138.2304	0.0000	0.0000	0.0000	0.0000	0.0000	0.0000
89	100.00	139.8012	0.0000	0.0000	0.0000	0.0000	0.0000	0.0000
90	100.00	141.3720	0.0000	0.0000	0.0000	0.0000	0.0000	0.0000
91	100.00	142.9428	0.0000	0.0000	0.0000	0.0000	0.0000	0.0000
92	100.00	144.5136	0.0000	0.0000	0.0000	0.0000	0.0000	0.0000
93	100.00	146.0844	0.0000	0.0000	0.0000	0.0000	0.0000	0.0000
94	100.00	147.6552	0.0000	0.0000	0.0000	0.0000	0.0000	0.0000
95	100.00	149.2260	0.0000	0.0000	0.0000	0.0000	0.0000	0.0000
96	100.00	150.7968	0.0000	0.0000	0.0000	0.0000	0.0000	0.0000
97	100.00	152.3676	0.0000	0.0000	0.0000	0.0000	0.0000	0.0000
98	100.00	153.9384	0.0000	0.0000	0.0000	0.0000	0.0000	0.0000
99	100.00	155.5092	0.0000	0.0000	0.0000	0.0000	0.0000	0.0000
100	100.00	157.0800	0.0000	0.0000	0.0000	0.0000	0.0000	0.0000

- NOTES**
1. ALL DIMENSIONS ARE SHOWN IN DECIMAL FEET.
  2. ALL DIMENSIONS SHOWN ON THIS PLAN ARE APPROXIMATE AND SHOULD BE CHECKED IN THE FIELD.
  3. ALL LOTS ARE TO BE PLATTED WITHIN 90 DAYS OF THE DATE OF THIS PLAN.
  4. ALL LOTS ARE TO BE PLATTED WITHIN 90 DAYS OF THE DATE OF THIS PLAN.
  5. DIMENSIONS OF ALL LOTS SHALL BE AS SHOWN ON THIS PLAN.
  6. ALL LOTS ARE TO BE PLATTED WITHIN 90 DAYS OF THE DATE OF THIS PLAN.
  7. ALL LOTS ARE TO BE PLATTED WITHIN 90 DAYS OF THE DATE OF THIS PLAN.

drawn by \_\_\_\_\_  
 designed by \_\_\_\_\_  
 reviewed by \_\_\_\_\_  
 prepared by \_\_\_\_\_  
 published by \_\_\_\_\_  
 reference \_\_\_\_\_

**lamp, Tynearson & associates, inc.**  
 1000 N. 10th Street, Lincoln, NE 68502  
 (402) 441-1111

**BENNINGTON LAKE**  
 SECTION 9, TOWNSHIP 16 NORTH, RANGE 11 EAST OF THE 6TH P.M. DOUGLAS COUNTY, NEBRASKA

**FINAL PLAT**

Job number - date  
 80099.01 - 003  
 book - page

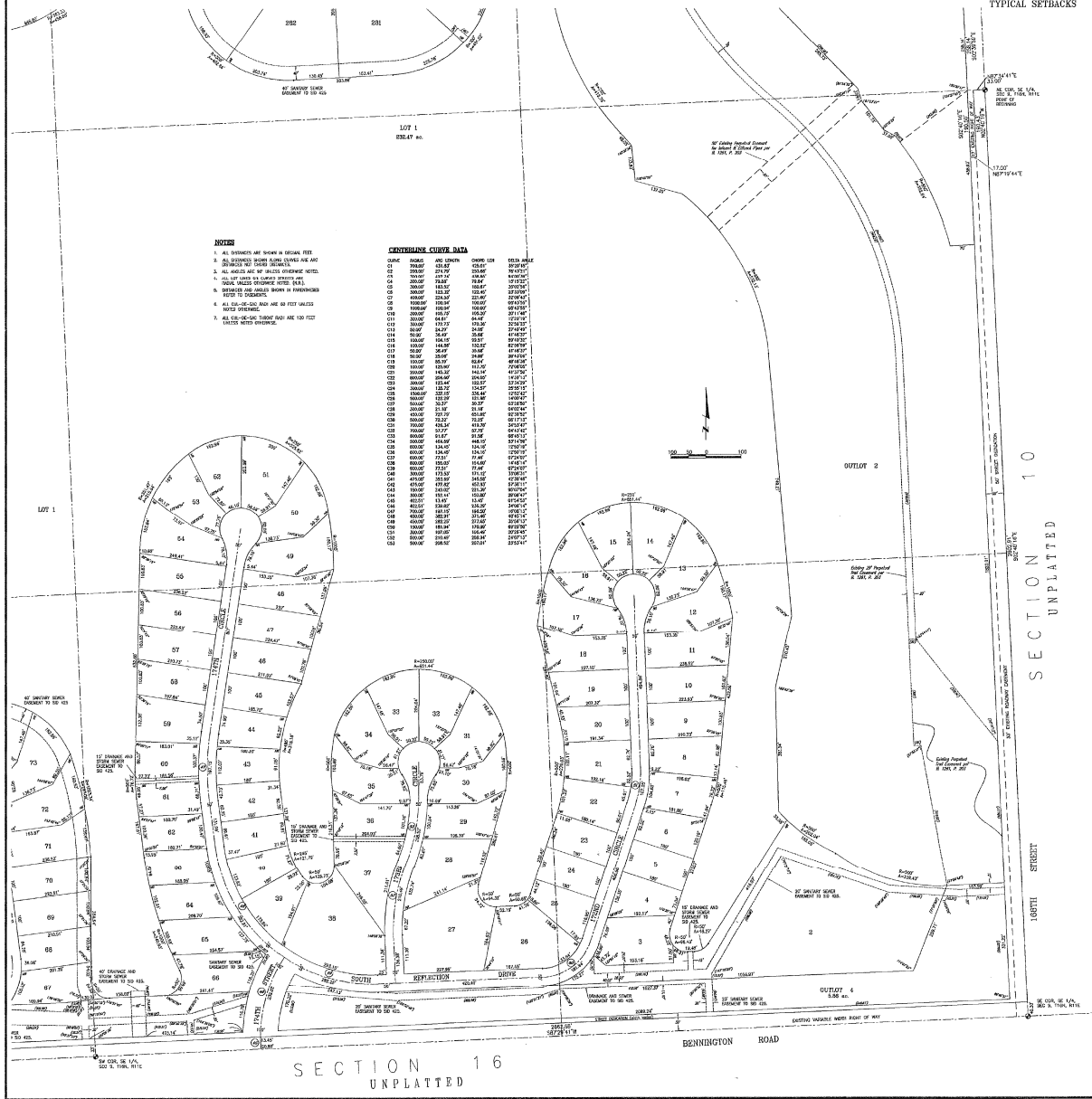
date  
 MAR. 11, 1999

sheet  
 1 of 5



# BENNINGTON LAKE

Lots 1 through 284, inclusive, and Outlots 1 through 12, inclusive, being a platting of part of Section 9, Township 16 North, Range 11 East of the 6th P.M. Douglas County, Nebraska



- NOTES**
1. ALL DIMENSIONS ARE GIVEN IN DECIMAL FEET.
  2. ALL DIMENSIONS SHOWN ALONG STRAIGHT LINES ARE DISTANCES BETWEEN CORNERS.
  3. ALL ANGLES ARE IN DEGREES MINUTES AND SECONDS.
  4. ALL LOT AREAS ARE TO BE EXACTLY AS SHOWN ON THIS PLAT.
  5. ALL LOTS ARE TO BE CONVEYED BY DEED.
  6. ALL LOTS ARE TO BE CONVEYED BY DEED.
  7. ALL CO-OPERATIVE ROAD ARE 60 FEET WIDE UNLESS NOTED OTHERWISE.
  8. ALL CO-OPERATIVE ROAD ARE 100 FEET WIDE UNLESS NOTED OTHERWISE.

**CORNERING CURVE DATA**

LINE	BEARING	ANGLE	CHORD	CHORD BEARING
C1	S 89° 59' 59" W	90° 00' 01"	100.0000	S 89° 59' 59" W
C2	S 89° 59' 59" W	90° 00' 01"	100.0000	S 89° 59' 59" W
C3	S 89° 59' 59" W	90° 00' 01"	100.0000	S 89° 59' 59" W
C4	S 89° 59' 59" W	90° 00' 01"	100.0000	S 89° 59' 59" W
C5	S 89° 59' 59" W	90° 00' 01"	100.0000	S 89° 59' 59" W
C6	S 89° 59' 59" W	90° 00' 01"	100.0000	S 89° 59' 59" W
C7	S 89° 59' 59" W	90° 00' 01"	100.0000	S 89° 59' 59" W
C8	S 89° 59' 59" W	90° 00' 01"	100.0000	S 89° 59' 59" W
C9	S 89° 59' 59" W	90° 00' 01"	100.0000	S 89° 59' 59" W
C10	S 89° 59' 59" W	90° 00' 01"	100.0000	S 89° 59' 59" W
C11	S 89° 59' 59" W	90° 00' 01"	100.0000	S 89° 59' 59" W
C12	S 89° 59' 59" W	90° 00' 01"	100.0000	S 89° 59' 59" W
C13	S 89° 59' 59" W	90° 00' 01"	100.0000	S 89° 59' 59" W
C14	S 89° 59' 59" W	90° 00' 01"	100.0000	S 89° 59' 59" W
C15	S 89° 59' 59" W	90° 00' 01"	100.0000	S 89° 59' 59" W
C16	S 89° 59' 59" W	90° 00' 01"	100.0000	S 89° 59' 59" W
C17	S 89° 59' 59" W	90° 00' 01"	100.0000	S 89° 59' 59" W
C18	S 89° 59' 59" W	90° 00' 01"	100.0000	S 89° 59' 59" W
C19	S 89° 59' 59" W	90° 00' 01"	100.0000	S 89° 59' 59" W
C20	S 89° 59' 59" W	90° 00' 01"	100.0000	S 89° 59' 59" W
C21	S 89° 59' 59" W	90° 00' 01"	100.0000	S 89° 59' 59" W
C22	S 89° 59' 59" W	90° 00' 01"	100.0000	S 89° 59' 59" W
C23	S 89° 59' 59" W	90° 00' 01"	100.0000	S 89° 59' 59" W
C24	S 89° 59' 59" W	90° 00' 01"	100.0000	S 89° 59' 59" W
C25	S 89° 59' 59" W	90° 00' 01"	100.0000	S 89° 59' 59" W
C26	S 89° 59' 59" W	90° 00' 01"	100.0000	S 89° 59' 59" W
C27	S 89° 59' 59" W	90° 00' 01"	100.0000	S 89° 59' 59" W
C28	S 89° 59' 59" W	90° 00' 01"	100.0000	S 89° 59' 59" W
C29	S 89° 59' 59" W	90° 00' 01"	100.0000	S 89° 59' 59" W
C30	S 89° 59' 59" W	90° 00' 01"	100.0000	S 89° 59' 59" W
C31	S 89° 59' 59" W	90° 00' 01"	100.0000	S 89° 59' 59" W
C32	S 89° 59' 59" W	90° 00' 01"	100.0000	S 89° 59' 59" W
C33	S 89° 59' 59" W	90° 00' 01"	100.0000	S 89° 59' 59" W
C34	S 89° 59' 59" W	90° 00' 01"	100.0000	S 89° 59' 59" W
C35	S 89° 59' 59" W	90° 00' 01"	100.0000	S 89° 59' 59" W
C36	S 89° 59' 59" W	90° 00' 01"	100.0000	S 89° 59' 59" W
C37	S 89° 59' 59" W	90° 00' 01"	100.0000	S 89° 59' 59" W
C38	S 89° 59' 59" W	90° 00' 01"	100.0000	S 89° 59' 59" W
C39	S 89° 59' 59" W	90° 00' 01"	100.0000	S 89° 59' 59" W
C40	S 89° 59' 59" W	90° 00' 01"	100.0000	S 89° 59' 59" W
C41	S 89° 59' 59" W	90° 00' 01"	100.0000	S 89° 59' 59" W
C42	S 89° 59' 59" W	90° 00' 01"	100.0000	S 89° 59' 59" W
C43	S 89° 59' 59" W	90° 00' 01"	100.0000	S 89° 59' 59" W
C44	S 89° 59' 59" W	90° 00' 01"	100.0000	S 89° 59' 59" W
C45	S 89° 59' 59" W	90° 00' 01"	100.0000	S 89° 59' 59" W
C46	S 89° 59' 59" W	90° 00' 01"	100.0000	S 89° 59' 59" W
C47	S 89° 59' 59" W	90° 00' 01"	100.0000	S 89° 59' 59" W
C48	S 89° 59' 59" W	90° 00' 01"	100.0000	S 89° 59' 59" W
C49	S 89° 59' 59" W	90° 00' 01"	100.0000	S 89° 59' 59" W
C50	S 89° 59' 59" W	90° 00' 01"	100.0000	S 89° 59' 59" W

C:\DWG\8091003.dwg Tue Apr 29 07:47:11 1999 lamp\_rymerson & associates, inc. (a.e. tipton)

Drawn by: [ ]  
 Checked by: [ ]  
 Prepared by: [ ]  
 Title: [ ]  
 Date: [ ]  
 Scale: [ ]  
 Job number: [ ]  
 Job page: [ ]  
 Date: [ ]  
 Sheet: [ ] of [ ]

**lamp\_rymerson & associates, inc.**  
 1000 West 10th Street, Suite 100  
 BENNINGTON LAKE  
 DOUGLAS COUNTY, NEBRASKA

**FINAL PLAT**

Job number: 800901-003  
 Job page: [ ]  
 Date: MAR. 1, 1999  
 Sheet: 3 of 5



