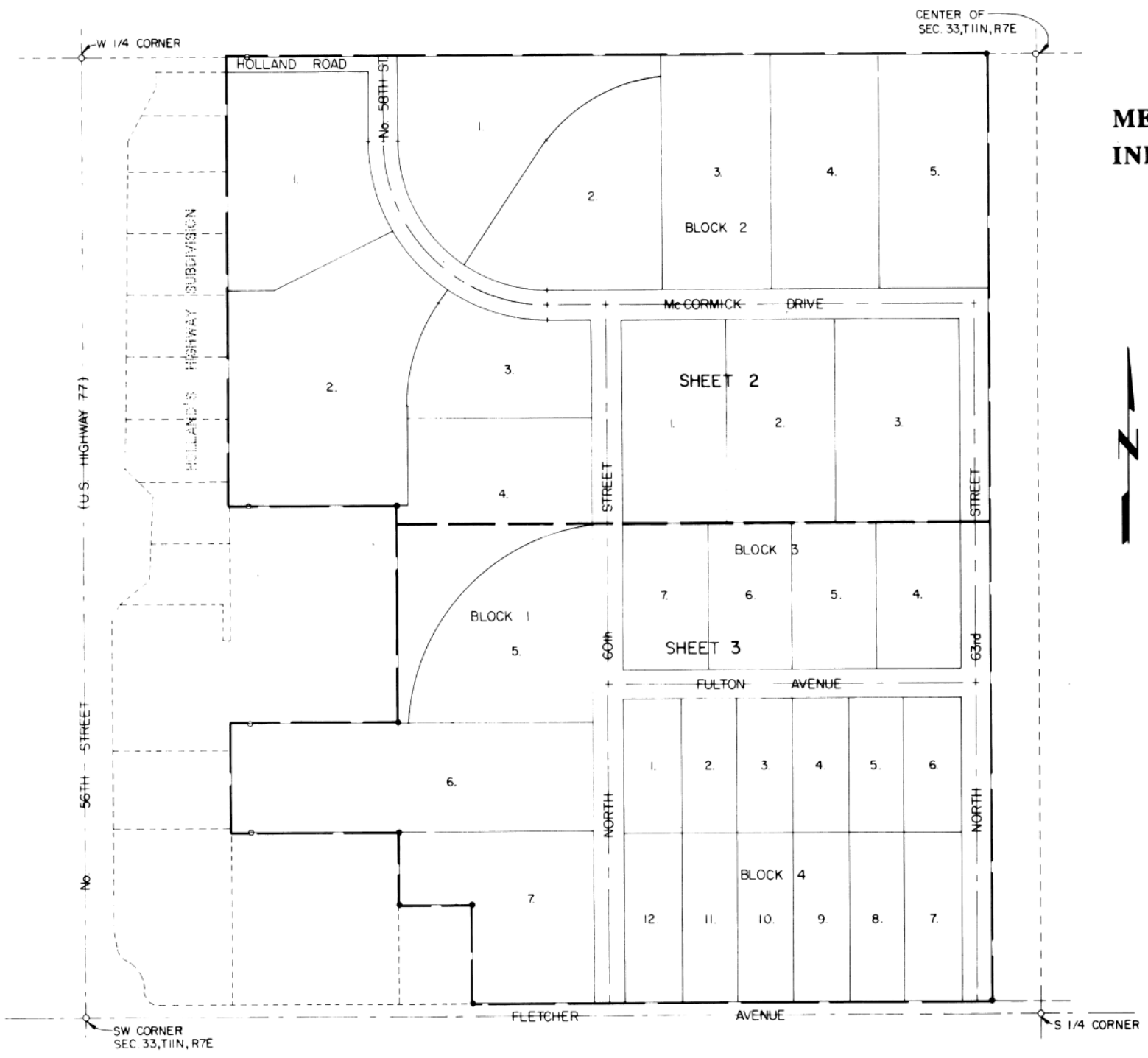


MEADOWLARK NORTH INDUSTRIAL PARK

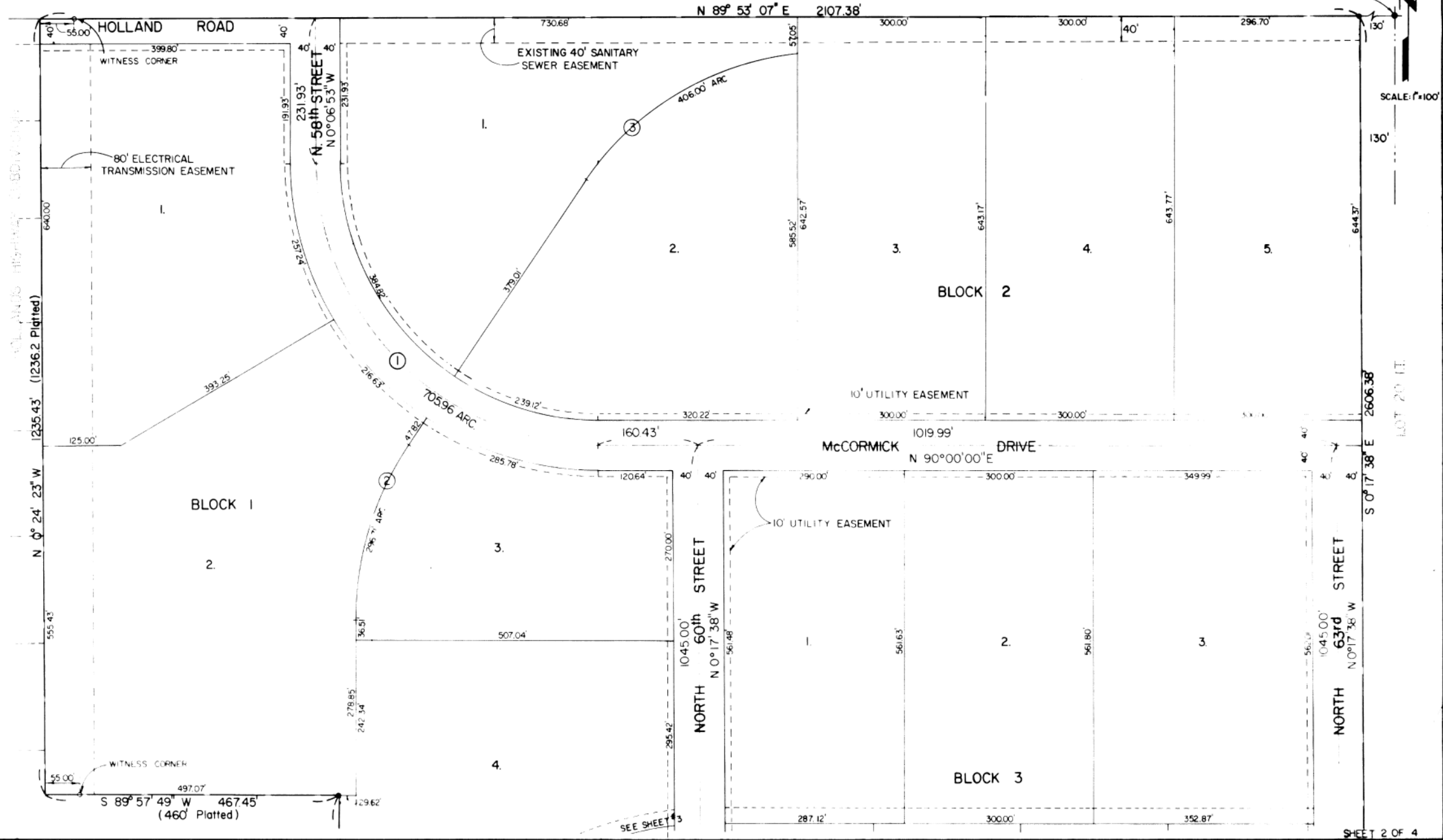


MEADOWLARK NORTH INDUSTRIAL PARK

| CURVE DATA | | |
|--|--|--|
| ① $\Delta = 89^{\circ}53'07''$ R = 450.00' T = 449.10' D = 12.73240° L = 705.96' | ② $\Delta = 34^{\circ}00'00''$ R = 500.00' T = 152.87' D = 11.45916° L = 296.71' | ③ $\Delta = 50^{\circ}34'11''$ R = 460.00' T = 217.29' D = 12.45560° L = 406.00' |

LEGEND

- Corner Found
- Corner Established



CENTER OF SEC. 33, T11N, R7E

SCALE: 1"=100'

MEADOWLARK NORTH INDUSTRIAL PARK

HOLLAND'S HIGHWAY SUBDIVISION

LOT 33 LT. (300' Platted)

LOT 34 LT.

LOT 12 LT.

LOT 11 LT.

LOT 10 LT.

LOT 9 LT.

LOT 8 LT.

LOT 7 LT.

LOT 6 LT.

LOT 5 LT.

LOT 4 LT.

LOT 3 LT.

LOT 2 LT.

LOT 1 LT.

LOT 0 LT.

LOT -1 LT.

LOT -2 LT.

LOT -3 LT.

LOT -4 LT.

LOT -5 LT.

LOT -6 LT.

LOT -7 LT.

LOT -8 LT.

LOT -9 LT.

LOT -10 LT.

LOT -11 LT.

LOT -12 LT.

LOT -13 LT.

LOT -14 LT.

LOT -15 LT.

LOT -16 LT.

LOT -17 LT.

LOT -18 LT.

LOT -19 LT.

LOT -20 LT.

LOT -21 LT.

LOT -22 LT.

LOT -23 LT.

LOT -24 LT.

LOT -25 LT.

LOT -26 LT.

LOT -27 LT.

LOT -28 LT.

LOT -29 LT.

LOT -30 LT.

LOT -31 LT.

LOT -32 LT.

LOT -33 LT.

LOT -34 LT.

LOT -35 LT.

LOT -36 LT.

LOT -37 LT.

LOT -38 LT.

LOT -39 LT.

LOT -40 LT.

LOT -41 LT.

LOT -42 LT.

LOT -43 LT.

LOT -44 LT.

LOT -45 LT.

LOT -46 LT.

LOT -47 LT.

LOT -48 LT.

LOT -49 LT.

LOT -50 LT.

LOT -51 LT.

LOT -52 LT.

LOT -53 LT.

LOT -54 LT.

LOT -55 LT.

LOT -56 LT.

LOT -57 LT.

LOT -58 LT.

LOT -59 LT.

LOT -60 LT.

LOT -61 LT.

LOT -62 LT.

LOT -63 LT.

LOT -64 LT.

LOT -65 LT.

LOT -66 LT.

LOT -67 LT.

LOT -68 LT.

LOT -69 LT.

LOT -70 LT.

LOT -71 LT.

LOT -72 LT.

LOT -73 LT.

LOT -74 LT.

LOT -75 LT.

LOT -76 LT.

LOT -77 LT.

LOT -78 LT.

LOT -79 LT.

LOT -80 LT.

LOT -81 LT.

LOT -82 LT.

LOT -83 LT.

LOT -84 LT.

LOT -85 LT.

LOT -86 LT.

LOT -87 LT.

LOT -88 LT.

LOT -89 LT.

LOT -90 LT.

LOT -91 LT.

LOT -92 LT.

LOT -93 LT.

LOT -94 LT.

LOT -95 LT.

LOT -96 LT.

LOT -97 LT.

LOT -98 LT.

LOT -99 LT.

LOT -100 LT.

LOT -101 LT.

LOT -102 LT.

LOT -103 LT.

LOT -104 LT.

LOT -105 LT.

LOT -106 LT.

LOT -107 LT.

LOT -108 LT.

LOT -109 LT.

LOT -110 LT.

LOT -111 LT.

LOT -112 LT.

LOT -113 LT.

LOT -114 LT.

LOT -115 LT.

LOT -116 LT.

LOT -117 LT.

LOT -118 LT.

LOT -119 LT.

LOT -120 LT.

LOT -121 LT.

LOT -122 LT.

LOT -123 LT.

LOT -124 LT.

LOT -125 LT.

LOT -126 LT.

LOT -127 LT.

LOT -128 LT.

LOT -129 LT.

LOT -130 LT.

LOT -131 LT.

LOT -132 LT.

LOT -133 LT.

LOT -134 LT.

LOT -135 LT.

LOT -136 LT.

LOT -137 LT.

LOT -138 LT.

LOT -139 LT.

LOT -140 LT.

LOT -141 LT.

LOT -142 LT.

LOT -143 LT.

LOT -144 LT.

LOT -145 LT.

LOT -146 LT.

LOT -147 LT.

LOT -148 LT.

LOT -149 LT.

LOT -150 LT.

LOT -151 LT.

LOT -152 LT.

LOT -153 LT.

LOT -154 LT.

LOT -155 LT.

LOT -156 LT.

LOT -157 LT.

LOT -158 LT.

LOT -159 LT.

LOT -160 LT.

LOT -161 LT.

LOT -162 LT.

LOT -163 LT.

LOT -164 LT.

LOT -165 LT.

LOT -166 LT.

LOT -167 LT.

LOT -168 LT.

LOT -169 LT.

LOT -170 LT.

LOT -171 LT.

LOT -172 LT.

LOT -173 LT.

LOT -174 LT.

LOT -175 LT.

LOT -176 LT.

LOT -177 LT.

LOT -178 LT.

LOT -179 LT.

LOT -180 LT.

LOT -181 LT.

LOT -182 LT.

LOT -183 LT.

LOT -184 LT.

LOT -185 LT.

LOT -186 LT.

LOT -187 LT.

LOT -188 LT.

LOT -189 LT.

LOT -190 LT.

LOT -191 LT.

LOT -192 LT.

LOT -193 LT.

LOT -194 LT.

LOT -195 LT.

LOT -196 LT.

LOT -197 LT.

LOT -198 LT.

LOT -199 LT.

LOT -200 LT.

LOT -201 LT.

LOT -202 LT.

LOT -203 LT.

LOT -204 LT.

LOT -205 LT.

LOT -206 LT.

LOT -207 LT.

LOT -208 LT.

LOT -209 LT.

LOT -210 LT.

LOT -211 LT.

LOT -212 LT.

LOT -213 LT.

LOT -214 LT.

LOT -215 LT.

LOT -216 LT.

LOT -217 LT.

LOT -218 LT.

LOT -219 LT.

LOT -220 LT.

LOT -221 LT.

LOT -222 LT.

LOT -223 LT.

LOT -224 LT.

LOT -225 LT.

LOT -226 LT.

LOT -227 LT.

LOT -228 LT.

LOT -229 LT.

LOT -230 LT.

LOT -231 LT.

LOT -232 LT.

LOT -233 LT.

LOT -234 LT.

LOT -235 LT.

LOT -236 LT.

LOT -237 LT.

LOT -238 LT.

LOT -239 LT.

LOT -240 LT.

LOT -241 LT.

LOT -242 LT.

LOT -243 LT.

LOT -244 LT.

LOT -245 LT.

LOT -246 LT.

LOT -247 LT.

LOT -248 LT.

LOT -249 LT.

LOT -250 LT.

LOT -251 LT.

LOT -252 LT.

LOT -253 LT.

LOT -254 LT.

LOT -255 LT.

LOT -256 LT.

LOT -257 LT.

LOT -258 LT.

LOT -259 LT.

LOT -260 LT.

LOT -261 LT.

LOT -262 LT.

LOT -263 LT.

LOT -264 LT.

LOT -265 LT.

LOT -266 LT.

LOT -267 LT.

LOT -268 LT.

LOT -269 LT.

LOT -270 LT.

LOT -271 LT.

LOT -272 LT.

LOT -273 LT.

LOT -274

SURVEYOR'S CERTIFICATE

I HEREBY CERTIFY THAT I HAVE CAUSED TO BE SURVEYED THE SUBDIVISION FORMERLY KNOWN AS COLE INDUSTRIAL PARK, AND HEREAFTER TO BE KNOWN AS MEADOWLARK NORTH INDUSTRIAL PARK, WHOSE METES AND BOUNDS DESCRIPTION IS AS FOLLOWS: COMMENCING AT THE SE CORNER OF THE SW 1/4 OF SECTION 33, T11N, R7E OF THE 6TH P.M. LANCASTER COUNTY NEBRASKA, THENCE NORTH 33.0', THENCE WEST ON A LINE PARALLEL TO AND 33.0' NORTH OF THE SOUTH LINE OF SAID SW 1/4 A DISTANCE OF 130.00', TO THE POINT OF BEGINNING, SAID POINT ALSO THE SE CORNER OF LOT 24 LOCATED IN SAID SW 1/4, THENCE ON AN ASSUMED BEARING N90°00'00"W ON A LINE PARALLEL TO AND 33.0' NORTH OF THE SOUTH LINE OF SAID SW 1/4 A DISTANCE OF 47.32', THENCE N0°00'00"E A DISTANCE OF 2.00', THENCE N90°00'00"W ON A LINE PARALLEL TO AND 35.0' NORTH OF THE SOUTH LINE OF SAID SW 1/4 A DISTANCE OF 1,165.47', THENCE S0°00'00"W A DISTANCE OF 2.00', THENCE N90°00'00"W ON A LINE PARALLEL TO AND 33.0' NORTH OF THE SOUTH LINE OF SAID SW 1/4 A DISTANCE OF 228.95' TO THE SE CORNER OF LOT 11 LOCATED IN SAID SW 1/4, THENCE N0°24'57"W ALONG THE EAST LINE OF SAID LOT 11 A DISTANCE OF 267.01' TO THE NE CORNER OF SAID LOT 11, THENCE S89°58'01"W ALONG THE NORTH LINE OF SAID LOT 11 A DISTANCE OF 200.13' TO A POINT ON THE EAST LINE OF LOT 12 LOCATED IN SAID SW 1/4, THENCE N0°25'01"W ALONG THE EAST LINE OF SAID LOT 12 A DISTANCE OF 200.36' TO THE NE CORNER OF SAID LOT 12, THENCE S89°56'57"W ALONG THE NORTH LINE OF SAID LOT 12 A DISTANCE OF 460.30' TO THE NW CORNER OF SAID LOT 12, THENCE N0°24'50"W A DISTANCE OF 300.04' TO A CORNER ON THE SOUTH LINE OF LOT 31 LOCATED IN SAID SW 1/4, THENCE S89°57'57"E A DISTANCE OF 464.16' TO THE SE CORNER ON THE MOST EASTERLY LINE OF SAID LOT 31, THENCE N0°05'29"W ALONG THE MOST EASTERLY LINE OF SAID LOT 31 A DISTANCE OF 600.43' TO THE MOST NORTHEASTERLY CORNER OF SAID LOT 31, THENCE S89°57'49"W ALONG THE MOST NORTHERLY LINE OF SAID LOT 31 A DISTANCE OF 467.45' TO A POINT ON THE EAST LINE OF HOLLAND'S HIGHWAY SUBDIVISION LOCATED IN SAID SW 1/4, THENCE N0°24'23"W ALONG THE EAST LINE OF SAID HOLLAND'S HIGHWAY SUBDIVISION A DISTANCE OF 1,235.43' TO A POINT ON THE NORTH LINE OF SAID SW 1/4, SAID POINT ALSO THE NW CORNER OF SAID LOT 24, THENCE N89°53'07"E ALONG THE NORTH LINE OF SAID SW 1/4 A DISTANCE OF 2,107.38' TO A POINT 130.00' WEST OF THE CENTER OF SAID SECTION 33, SAID POINT ALSO THE NE CORNER OF SAID LOT 24, THENCE S0°17'38"E ALONG A LINE PARALLEL TO AND 130.00' WEST OF THE EAST LINE OF SAID SW 1/4 A DISTANCE OF 2,606.38' TO THE POINT OF BEGINNING. SAID TRACT CONTAINS 113.2 ACRES MORE OR LESS. PERMANENT MONUMENTS HAVE BEEN FOUND OR PLACED AT ALL BOUNDARY CORNERS, STREET INTERSECTIONS, CENTERLINE POINTS OF TANGENCY AND CURVATURE AND ALL LOT CORNERS AS SHOWN ON THE PLAT. ALL DIMENSIONS ARE CHORD MEASUREMENTS UNLESS OTHERWISE SHOWN AND ARE IN FEET AND DECIMALS OF A FOOT.

28 JANUARY 1986 DATE
Roger K. Severin
ROGER K. SEVERIN
OLSSON ASSOCIATES
334
LAND SURVEYOR'S NUMBER

STATE OF NEBRASKA)
) ss.
COUNTY OF LANCASTER)

The foregoing instrument was acknowledged before me this 19th day of March, 1986, by Stephanie A. Armitage, Chairman of the Board of Commissioners of the County of Lancaster, Nebraska, on behalf of Lancaster County.



Reta W. Katt
Notary Public

My commission expires: October 25, 1989

DEDICATION

THE FOREGOING PLAT, FORMERLY KNOWN AS COLE INDUSTRIAL PARK AND HEREAFTER TO BE KNOWN AS MEADOWLARK NORTH INDUSTRIAL PARK, IS A SUBDIVISION OF LOT 24 I.T., LOCATED WITHIN THE SW 1/4 OF SECTION 33, T11N, R7E OF THE 6TH P.M., LANCASTER COUNTY, NEBRASKA AND MORE PARTICULARLY DESCRIBED IN THE SURVEYOR'S CERTIFICATE. THIS DEDICATION IS MADE WITH THE FREE CONSENT AND IN ACCORDANCE WITH THE DESIRE OF THE UNDERSIGNED OWNERS AND PROPRIETORS AND THE EASEMENTS SHOWN THEREON ARE HEREBY GRANTED IN PERPETUITY TO THE CITY OF LINCOLN, NEBRASKA, THE LINCOLN TELEPHONE AND TELEGRAPH CO. AND OTHER PUBLIC UTILITIES, THEIR SUCCESSORS AND ASSIGNS TO CONSTRUCT, OPERATE, MAINTAIN REPAIR AND REPLACE STORM SEWER, SANITARY SEWER, WATER MAINS, CONDUITS, BURIED CABLES, WIRES, POLES, COMMERCIAL ANTENNA TELEVISION FACILITIES AND ALL APPURTENANCES THERETO, OVER, UPON OR UNDER THE EASEMENTS AS SHOWN ON THE FOREGOING PLAT, THE STREETS SHOWN THEREON ARE HEREBY DEDICATED TO THE USE OF THE PUBLIC. ALL UTILITY EASEMENTS ARE 10.00' IN WIDTH CENTERED ON LOT LINE UNLESS OTHERWISE SHOWN.

OWNER'S STATEMENT

We request the name of the subdivision be changed from Cole Industrial Park to Meadowlark North Industrial Park.

This request is not to seek the release of:

- 1. Conditions stated in Ordinance No. 12250 set by the City in approving Cole Industrial Park Final Plat;
- 2. Title 26 of the LMC, the land subdivision ordinance; and
- 3. Easements, streets and land dedicated to the public when the City accepted Cole Industrial Park Final Plat.

FIRST NATIONAL BANK & TRUST COMPANY OF LINCOLN

BY: William C. Smith, President
Date: Jan 30, 1986

THE COUNTY OF LANCASTER, NEBRASKA

BY: Stephanie A. Armitage
Stephanie A. Armitage,
Chairman of the Board of
Commissioners of Lancaster
County, Nebraska
Date: 3-18-86

MEADOWLARK NORTH INDUSTRIAL PARK

LEGAL DESCRIPTION

All lots within Meadowlark North Industrial Park more particularly described as:

LOTS 1, 2, 3, 4, 5, 6 and 7, Block 1;

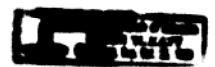
LOTS 1, 2, 3, 4 and 5, Block 2;

LOTS 1, 2, 3, 4, 5, 6 and 7, Block 3; and

LOTS 1, 2, 3, 4, 5, 6, 7, 8, 9, 10, 11, and 12, Block 4, Meadowlark North Industrial Park, Lincoln, Lancaster County, Nebraska, formerly known as Cole Industrial Park.

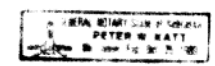
STATE OF NEBRASKA)
) ss.
COUNTY OF LANCASTER)

The foregoing instrument was acknowledged before me this 30th day of January, 1986, by William C. Smith, President of First National Bank & Trust Company of Lincoln, a national banking association, on behalf of the association.



Reta W. Katt
Notary Public

My commission expires: October 25, 1989



APPROVAL

This Final Platt Amendment, pursuant to Section 26.11.075 L.M.C., is approved

Director of Lincoln-Lancaster County Planning Department

3/24/86
Date

INDEXED
MAY 1986
GENERAL
A-66
2065
38-328
223
227-227
231-231
1986 MAR 26 AM 11:25
INST. NO. 86- 7635