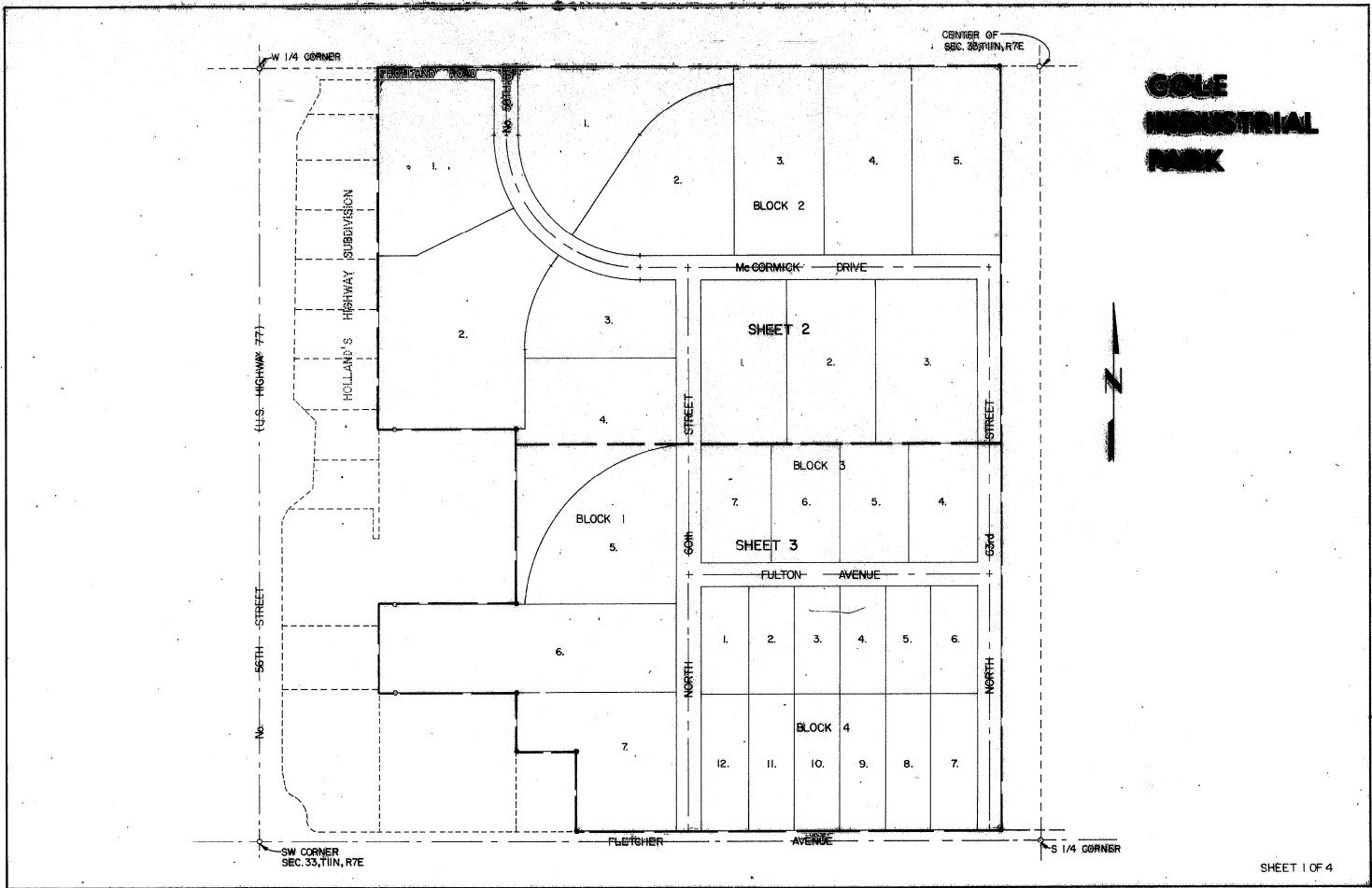


GOLE INDUSTRIAL PARK



SHEET 1 OF 4

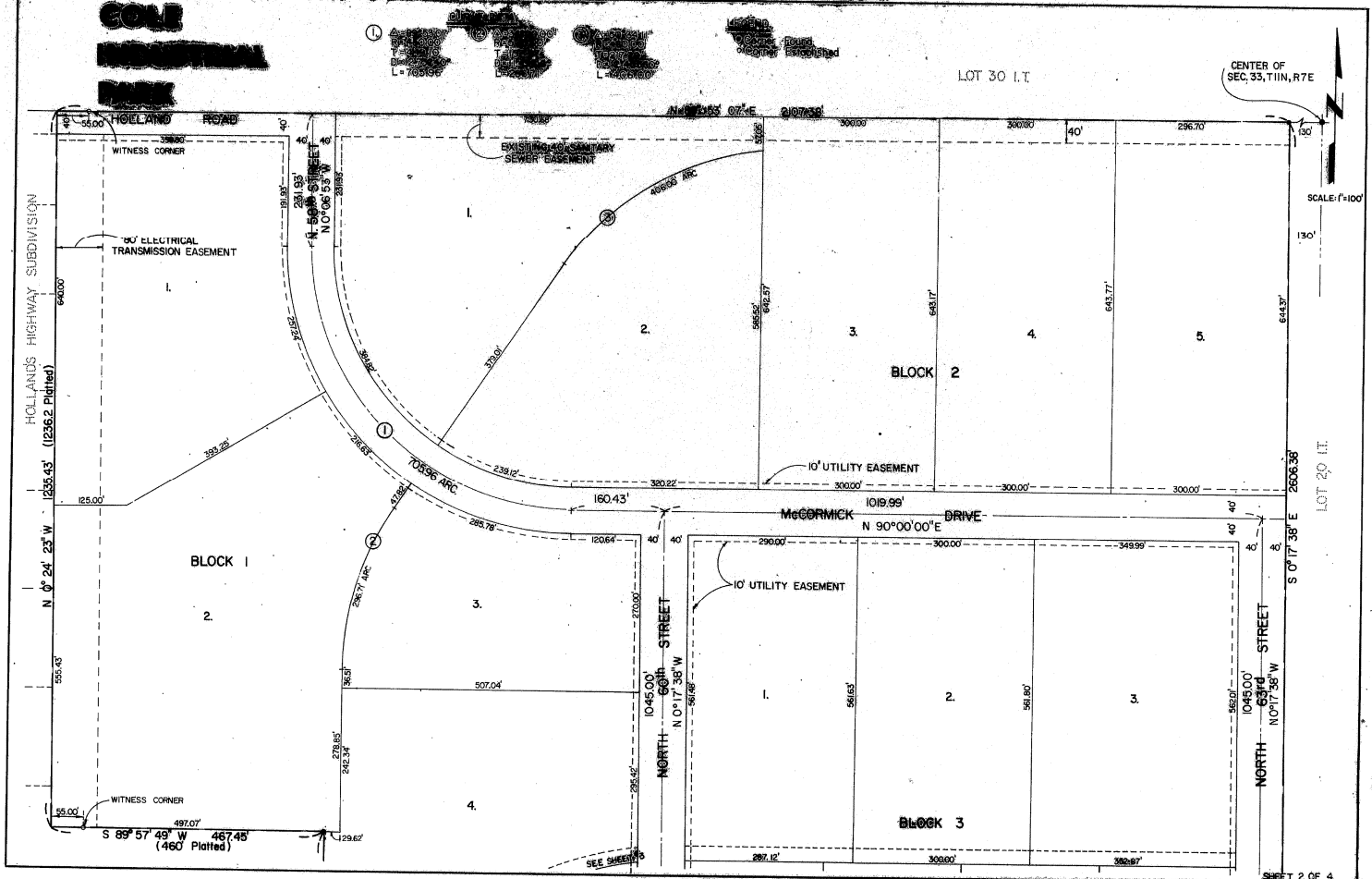
Drw. No. 2444

70-0277

COLE INDUSTRIAL PARK

LOT 30 I.T.

CENTER OF SEC. 33, T11N, R7E

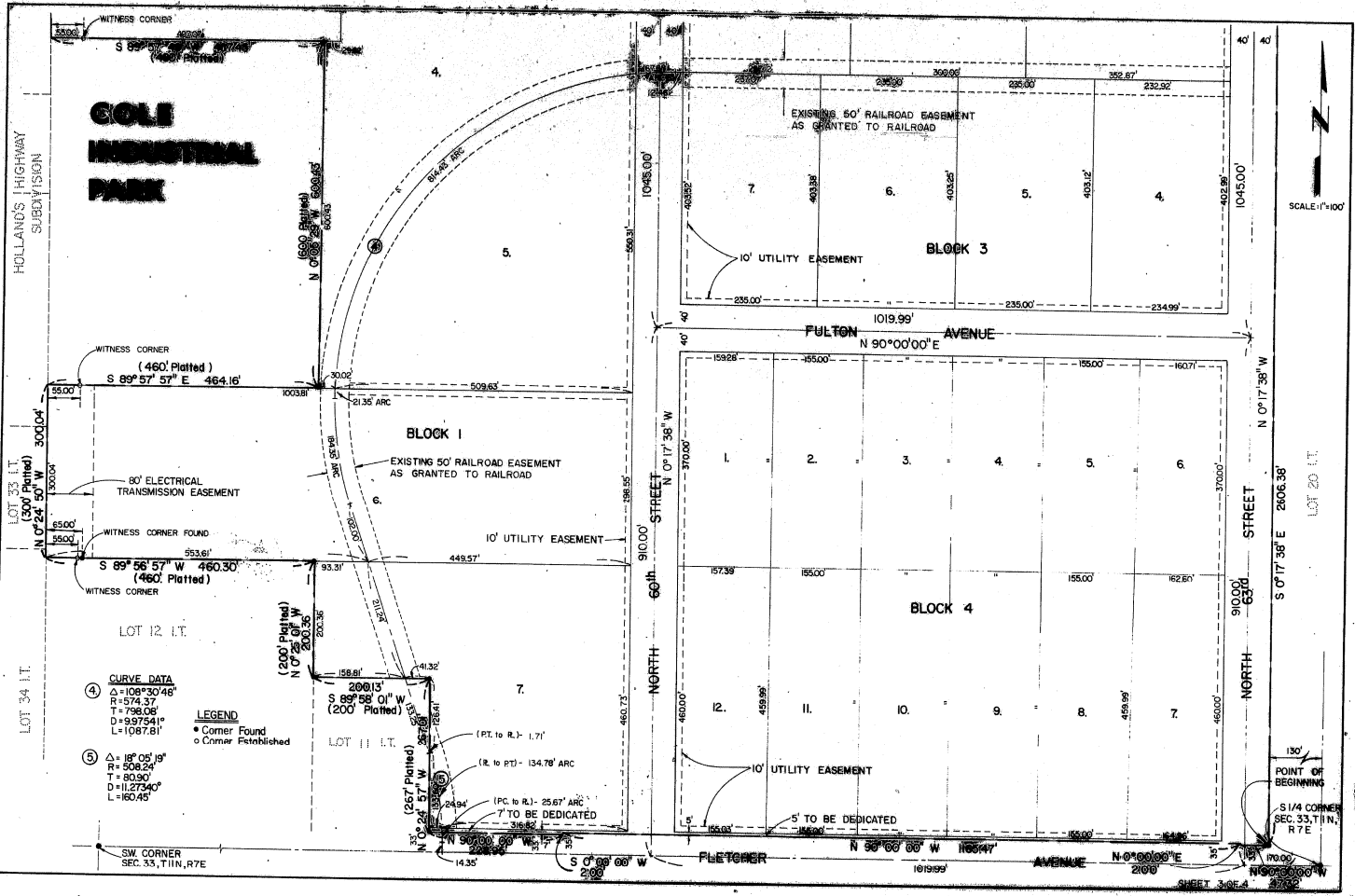


SCALE: 1"=100'

LOT 20 I.T.

SHEET 2 OF 4
Drw. No. 2444

70-0377



GOLF INDUSTRIAL PARK

WITNESS CORNER
(460' Platted)
S 89° 57' 57" E 464.16'

WITNESS CORNER FOUND
S 89° 56' 57" W 460.30'
(460' Platted)

CURVE DATA
④ Δ = 108° 30' 48"
R = 574.37'
T = 798.06'
D = 937.541'
L = 1087.81'
⑤ Δ = 18° 05' 19"
R = 508.24'
T = 80.90'
D = 1275.40'
L = 162.45'

LEGEND
• Corner Found
○ Corner Established

EXISTING 60' RAILROAD EASEMENT AS GRANTED TO RAILROAD

EXISTING 50' RAILROAD EASEMENT AS GRANTED TO RAILROAD

7' TO BE DEDICATED

BLOCK 3

BLOCK 4

BLOCK 1

FULTON AVENUE
N 90° 00' 00" E

NORTH 60th STREET
N 0° 17' 38" W

NORTH 63rd STREET
N 0° 17' 38" W

FLETCHER AVENUE
N 50° 00' 00" W 166.44'
N 0° 00' 00" E 216.0'

SCALE: 1" = 100'

130'
POINT OF BEGINNING
S 1/4 CORNER
SEC. 33, T11N,
R 7E

Draw No. 2444

70-10-1717

