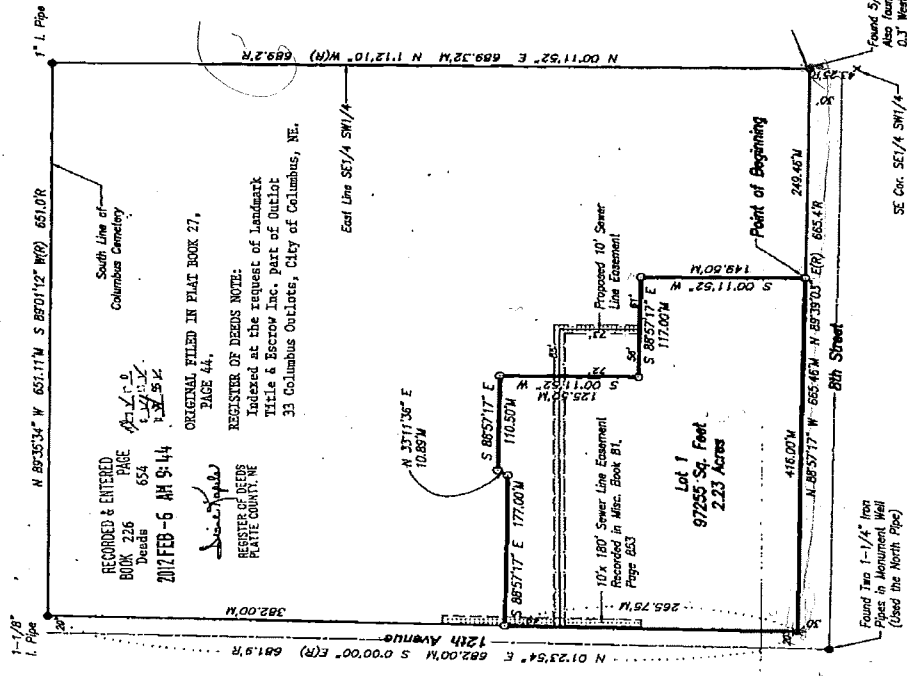


CUZZIN'S CORNER SUBDIVISION, A MINOR SUBDIVISION TO THE CITY OF COLUMBUS, PLATTE COUNTY, NEBRASKA



Developer:
PSC Inc.
Attn: Dennis Haysbunamer
1950 West Camino Road
Columbus, Nebraska 68501
Phone: (402) 635-1720

- Legend-**
- Found Monument
 - Set 5/8" x 24" Rebar w/ Plastic Survey Cap
 - ✕ Survey Mark in Concrete
 - M Measured (As Survey)
 - R Recorded Measurement
 - B.C. Wilson, L.S. #216

Note: All Bearings are referenced from True North observed at the Northeast Corner, Section 36, T17N, R17W.

Description:
A tract of land located in the SE 1/4 of the SW 1/4, Section 20, T17N, R17E of the 6th P.M., Platte County, Nebraska, more particularly described as the Southwest corner of said SE 1/4 SW 1/4, being N 00°11'52" E and bearing 36, T17N, R17W, 4.25 ac. on the East line of said Northeast Corner, Section 36, T17N, R17W, 4.25 ac. on the East line of said SE 1/4 SW 1/4, to the North right-of-way line of 8th Street, City of Columbus; thence N 89°35'34" W, 249.46 ft. on the North right-of-way line of said 8th Street to the point of beginning; thence continuing N 89°35'34" W, 416.00 ft. on the North line of said 8th Street to the East right-of-way line of 12th Avenue, City of Columbus; thence N 01°23'54" E, 265.75 ft. on the East right-of-way line of 12th Avenue to the East line of said SE 1/4 SW 1/4, being N 00°11'52" E, 689.32 ft.; thence S 89°01'42" W, 651.07 ft. to the point of beginning, containing 2.23 acres more or less.

Surveyor's Statement:
I, Thomas A. Trammel, a Registered Land Surveyor in the State of Nebraska, hereby state that this subdivision was surveyed under under my direct supervision and is correct to the best of my knowledge and belief.

Thomas A. Trammel
Thomas A. Trammel, L.S. #435
January 28, 2012

City of Columbus Approval:
This Plat of Cuzzin's Corner Subdivision, a minor subdivision, to the City of Columbus Platte County, Nebraska

This 2nd day of February, 2012,
Richard J. Howard
City Clerk



**CUZZIN'S CORNER SUBDIVISION
A MINOR SUBDIVISION
COLUMBUS NEBRASKA**

DATE	FILED	10/17/2012
PLAT		

Fee \$17.00
Received from:
Landmark Title & Escrow, Inc.

654