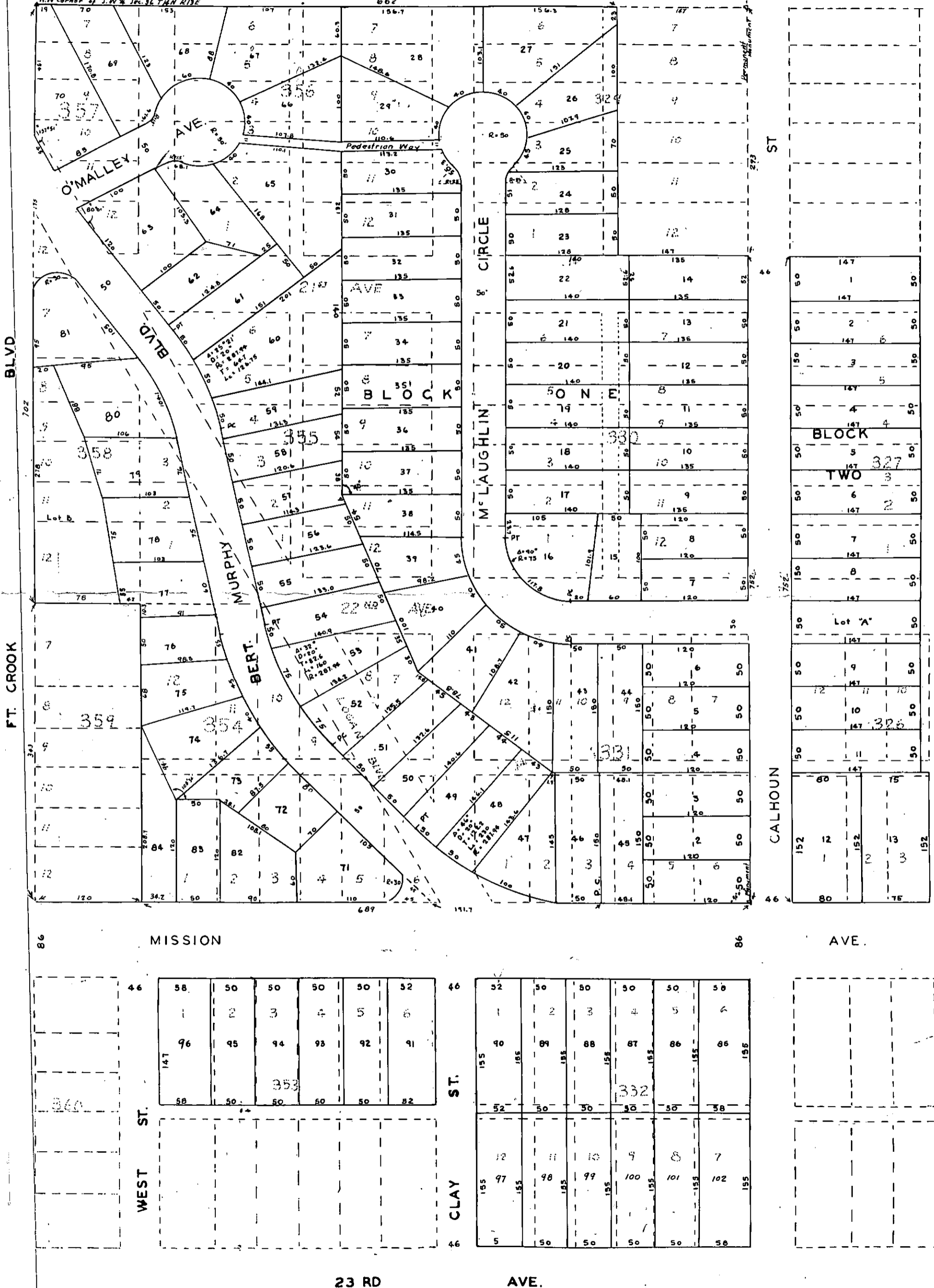




# RUSHART ADDITION IN SW 1/4 SEC. 36 T14N R13E BELLEVUE SARPY COUNTY NEBRASKA

SCALE 1" = 50'

265 ft. North 84955 ft. West to  
N.W. Corner of S.W. 1/4 Sec. 36 T14N R13E



58	50	50	50	50	52
1	2	3	4	5	6
96	95	94	93	92	91
		353			
58	50	50	50	50	52

52	50	50	50	50	50
1	2	3	4	5	6
90	89	88	87	86	85
			332		
52	50	50	50	50	50

12	11	10	9	8	7
97	98	99	100	101	102
155	155	155	155	155	155

12	11	10	9	8	7
97	98	99	100	101	102
155	155	155	155	155	155