



BK 2165 PG 488-500



DEED 2000 14513

Nebr Doc Stamp Tax
Date
\$
By

RICHARD N TAKECHI
REGISTER OF DEEDS
DOUGLAS COUNTY, NE

00 OCT 18 PM 3: 35

RECEIVED

**THIS PAGE INCLUDED FOR INDEXING
PAGE DOWN FOR BALANCE OF INSTRUMENT**

Deed
 13
 34
 MC - 07102
 MC - 07101 - old
 MC - 07101 - old
 MC - 07101 - old

COMMERCIAL FEDERAL BUSINESS PARK REPLAT 1

Lots 1 through 13, inclusive, and Outlots 1 through 4, inclusive, being a replatting of COMMERCIAL FEDERAL BUSINESS PARK, Lots 1 through 11, inclusive and Outlots 1 through 6, inclusive, a subdivision, as surveyed, platted and recorded in Douglas County, Nebraska

drawn by	est.
designed by	rev.
checked by	date
reviewed by	date
revisions	
date	
sheet	1 of 2

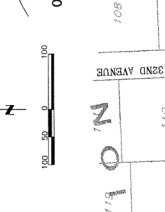
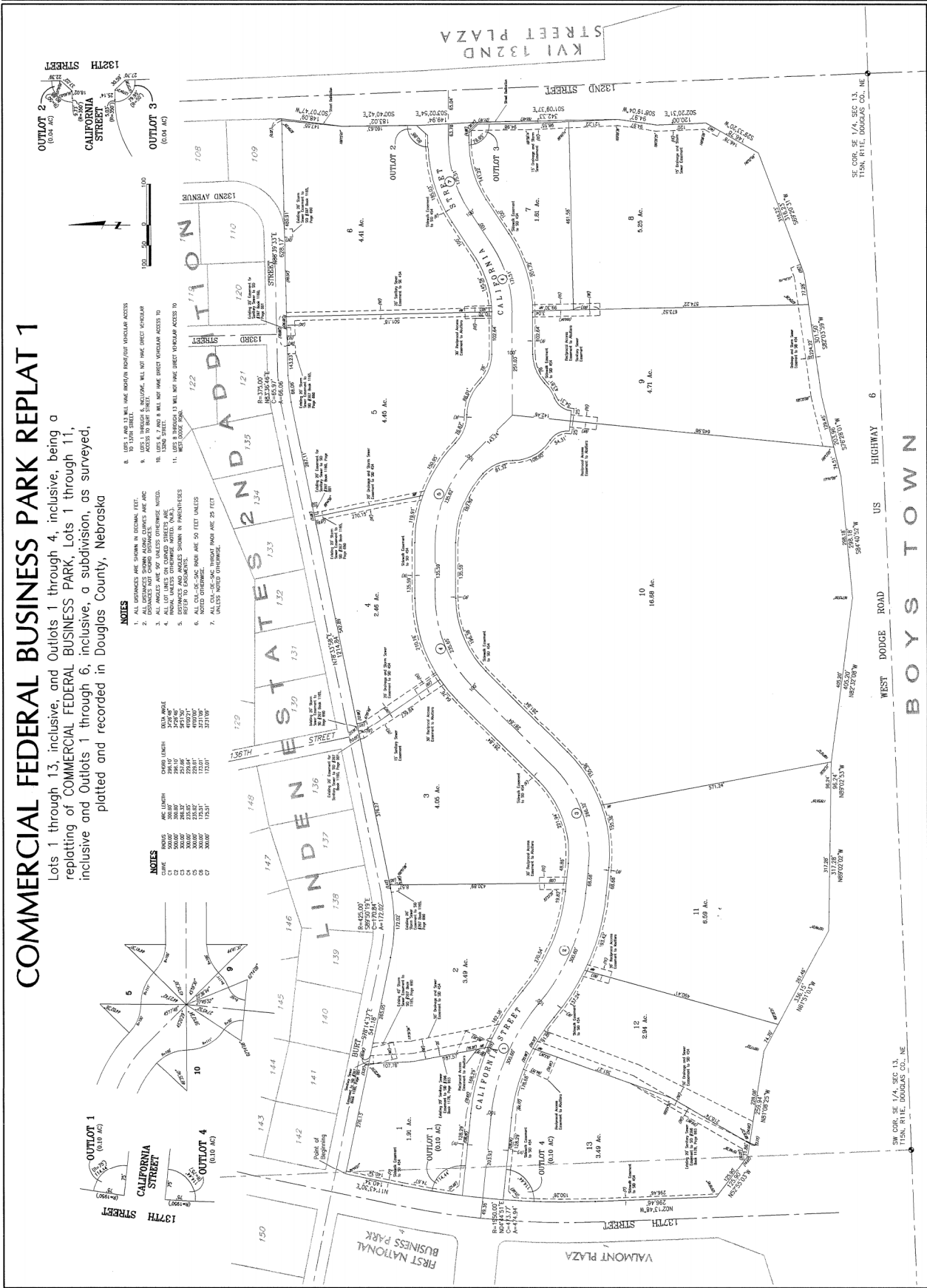
job number-tasks
99015-00-004
book page
date
JUNE 12, 2000

COMMERICAL FEDERAL BUSINESS PARK REPLAT 1
1470 West Dodge Road, Suite 100
Omaha, Nebraska 68142-2028
Ph 402 488 2488
Fax 402 488 2790
Lamp, Fynearson & Associates, Inc.
Engineers
Surveyors

FINAL
PLAT

SW CORP. SE 1/4, SEC. 13,
T15N., R11E., DOUGLAS CO., NE

SW CORP. SE 1/4, SEC. 13,
T15N., R11E., DOUGLAS CO., NE



NOTES

1. ALL DISTANCES ARE SHOWN IN DECIMAL FEET.
2. DISTANCES NOT SHOWN IN DECIMAL FEET ARE IN FEET AND INCHES.
3. ALL ANGLES ARE 90° UNLESS OTHERWISE NOTED.
4. BEARINGS ARE SHOWN IN DEGREES, MINUTES AND SECONDS.
5. BEARINGS ARE SHOWN IN DEGREES, MINUTES AND SECONDS.
6. ALL CURVES ARE 50 FEET UNLESS OTHERWISE NOTED.
7. UNLESS NOTED OTHERWISE.

NOTES

1. LOTS 1, 140 & 141 WILL HAVE IMPROVED HIGHWAY ACCESS.
2. LOTS 1, 140 & 141 WILL HAVE IMPROVED HIGHWAY ACCESS.
3. LOTS 1, 140 & 141 WILL HAVE IMPROVED HIGHWAY ACCESS.
4. LOTS 1, 140 & 141 WILL HAVE IMPROVED HIGHWAY ACCESS.
5. LOTS 1, 140 & 141 WILL HAVE IMPROVED HIGHWAY ACCESS.
6. LOTS 1, 140 & 141 WILL HAVE IMPROVED HIGHWAY ACCESS.
7. LOTS 1, 140 & 141 WILL HAVE IMPROVED HIGHWAY ACCESS.

NOTES

1. CHORD LENGTH
2. CHORD BEARING
3. CHORD AREA
4. CHORD PERIMETER
5. CHORD DISTANCE
6. CHORD BEARING
7. CHORD AREA
8. CHORD PERIMETER
9. CHORD DISTANCE
10. CHORD BEARING
11. CHORD AREA
12. CHORD PERIMETER
13. CHORD DISTANCE
14. CHORD BEARING
15. CHORD AREA
16. CHORD PERIMETER
17. CHORD DISTANCE
18. CHORD BEARING
19. CHORD AREA
20. CHORD PERIMETER
21. CHORD DISTANCE
22. CHORD BEARING
23. CHORD AREA
24. CHORD PERIMETER
25. CHORD DISTANCE
26. CHORD BEARING
27. CHORD AREA
28. CHORD PERIMETER
29. CHORD DISTANCE
30. CHORD BEARING
31. CHORD AREA
32. CHORD PERIMETER
33. CHORD DISTANCE
34. CHORD BEARING
35. CHORD AREA
36. CHORD PERIMETER
37. CHORD DISTANCE
38. CHORD BEARING
39. CHORD AREA
40. CHORD PERIMETER
41. CHORD DISTANCE
42. CHORD BEARING
43. CHORD AREA
44. CHORD PERIMETER
45. CHORD DISTANCE
46. CHORD BEARING
47. CHORD AREA
48. CHORD PERIMETER
49. CHORD DISTANCE
50. CHORD BEARING
51. CHORD AREA
52. CHORD PERIMETER
53. CHORD DISTANCE
54. CHORD BEARING
55. CHORD AREA
56. CHORD PERIMETER
57. CHORD DISTANCE
58. CHORD BEARING
59. CHORD AREA
60. CHORD PERIMETER
61. CHORD DISTANCE
62. CHORD BEARING
63. CHORD AREA
64. CHORD PERIMETER
65. CHORD DISTANCE
66. CHORD BEARING
67. CHORD AREA
68. CHORD PERIMETER
69. CHORD DISTANCE
70. CHORD BEARING
71. CHORD AREA
72. CHORD PERIMETER
73. CHORD DISTANCE
74. CHORD BEARING
75. CHORD AREA
76. CHORD PERIMETER
77. CHORD DISTANCE
78. CHORD BEARING
79. CHORD AREA
80. CHORD PERIMETER
81. CHORD DISTANCE
82. CHORD BEARING
83. CHORD AREA
84. CHORD PERIMETER
85. CHORD DISTANCE
86. CHORD BEARING
87. CHORD AREA
88. CHORD PERIMETER
89. CHORD DISTANCE
90. CHORD BEARING
91. CHORD AREA
92. CHORD PERIMETER
93. CHORD DISTANCE
94. CHORD BEARING
95. CHORD AREA
96. CHORD PERIMETER
97. CHORD DISTANCE
98. CHORD BEARING
99. CHORD AREA
100. CHORD PERIMETER

1 of 2
7-9

COMMERCIAL FEDERAL BUSINESS PARK REPLAT 1

Lots 1 through 13, inclusive, and Outlots 1 through 4, inclusive, being a replatting of COMMERCIAL FEDERAL BUSINESS PARK, Lots 1 through 11, inclusive, and Outlots 1 through 6, inclusive, a subdivision, as surveyed, plotted and recorded in Douglas County, Nebraska

LAND SURVEYOR'S CERTIFICATE

I, the undersigned, being duly qualified and sworn to as such, do hereby certify that the foregoing plat of subdivision of land is a true and correct copy of the original as filed in my office and that the same has been approved by me and that the same is in accordance with the laws of the State of Nebraska and the rules and regulations of the Board of Surveyors of the State of Nebraska. I further certify that the same has been approved by me and that the same is in accordance with the laws of the State of Nebraska and the rules and regulations of the Board of Surveyors of the State of Nebraska. I further certify that the same has been approved by me and that the same is in accordance with the laws of the State of Nebraska and the rules and regulations of the Board of Surveyors of the State of Nebraska.



WILLIAM THURMANN, Surveyor
June 12, 2000



County Clerk
This plat of subdivision was received by the Douglas County Engineer's office.

COUNTY ENGINEER'S CERTIFICATE

This plat of subdivision was received by the Douglas County Engineer's office.



June 3, 2000
Douglas County Engineer

RESOLUTION OF THE BOARD OF SUPERVISORS OF THE CITY OF GORHAM

I HEREBY RESOLVE that the plat of COMMERCIAL FEDERAL BUSINESS PARK REPLAT 1, filed in the office of the County Clerk of Douglas County, Nebraska, on the 12th day of August, 2000, be approved.

Shirley K. Kiser
City Clerk

RESOLUTION OF THE CITY PLANNING BOARD

This plat of COMMERCIAL FEDERAL BUSINESS PARK REPLAT 1 was approved by the City Planning Board of the City of Gorham, Nebraska, this 12th day of August, 2000.

Shirley K. Kiser
City Planning Board

RESOLUTION OF THE CITY COUNCIL

This plat of COMMERCIAL FEDERAL BUSINESS PARK REPLAT 1 was approved and recorded by the City Council of Gorham, Nebraska, on the 12th day of August, 2000.

Shirley K. Kiser, Mayor
Members of the City Council

WITNESSES

STATE OF NEBRASKA, County of Douglas, ss: I, the undersigned, being duly qualified and sworn to as such, do hereby certify that the foregoing plat of subdivision of land is a true and correct copy of the original as filed in my office and that the same has been approved by me and that the same is in accordance with the laws of the State of Nebraska and the rules and regulations of the Board of Surveyors of the State of Nebraska.

Shirley K. Kiser
County Clerk

Shirley K. Kiser
County Clerk

WITNESSES

STATE OF NEBRASKA, County of Douglas, ss: I, the undersigned, being duly qualified and sworn to as such, do hereby certify that the foregoing plat of subdivision of land is a true and correct copy of the original as filed in my office and that the same has been approved by me and that the same is in accordance with the laws of the State of Nebraska and the rules and regulations of the Board of Surveyors of the State of Nebraska.

Shirley K. Kiser
County Clerk

STATE OF NEBRASKA

County of Douglas, ss: I, the undersigned, being duly qualified and sworn to as such, do hereby certify that the foregoing plat of subdivision of land is a true and correct copy of the original as filed in my office and that the same has been approved by me and that the same is in accordance with the laws of the State of Nebraska and the rules and regulations of the Board of Surveyors of the State of Nebraska.

Shirley K. Kiser
County Clerk

STATE OF NEBRASKA

County of Douglas, ss: I, the undersigned, being duly qualified and sworn to as such, do hereby certify that the foregoing plat of subdivision of land is a true and correct copy of the original as filed in my office and that the same has been approved by me and that the same is in accordance with the laws of the State of Nebraska and the rules and regulations of the Board of Surveyors of the State of Nebraska.

Shirley K. Kiser
County Clerk

Drawn by: [Signature]
Designed by: [Signature]
Reviewed by: [Signature]
Title: [Signature]
Date: [Signature]

PLAT
FINAL

Job number: 9901100-004
Book: [Signature]
Page: [Signature]

Date: JUNE 12, 2000
Sheet: 2 of 2

Lamp, Gynearson & Associates, Inc.
engineers
surveys
partners
1470 West College Road, Suite 2020
Omaha, Nebraska 68104
Tel: 402.488.3488
Fax: 402.488.3790

COMMERCIAL FEDERAL BUSINESS PARK REPLAT 1
DOUGLAS COUNTY, NEBRASKA

GENERAL NOTICE OF RECORD
SALLY J. BERNHARDT
My Comm. Exp. Jan. 14, 2001

GENERAL NOTICE OF RECORD
SALLY J. BERNHARDT
My Comm. Exp. Jan. 14, 2001