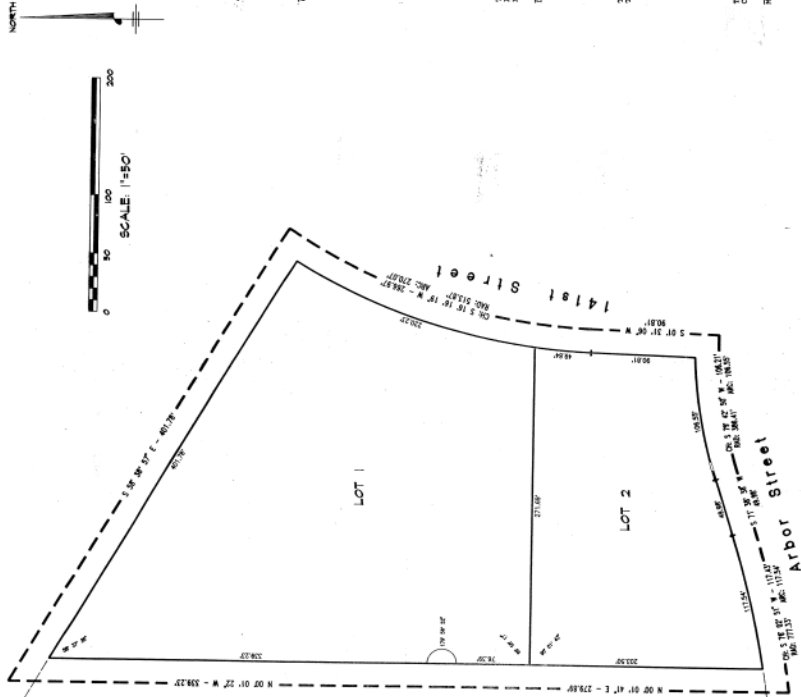


RECEIVED
DEC 2 2 21 PM '40
CITY OF OMAHA, NEBRASKA

DATE 11/18/40
TYPE 1000
FEE \$10.00

FINAL PLAT GEORGETOWNE REPLAT LOTS 1 & 2

BEING A REPLAT OF PART OF LOT 4, GEORGETOWNE REPLAT, A PLATTED AND RECORDED SUBDIVISION IN THE CITY OF OMAHA, DOUGLAS COUNTY, NEBRASKA.



SUBDIVISION CERTIFICATE

I HEREBY CERTIFY THAT I HAVE EXAMINED AND PLACED PERMANENT MARKERS AT THE CORNERS OF THE REPLAT OF A PART OF LOT 4, GEORGETOWNE REPLAT, A PLATTED AND RECORDED SUBDIVISION IN DOUGLAS COUNTY, NEBRASKA, DESCRIBED AS FOLLOWS: [Description of the replat]...



APPROVED BY THE BOARD OF SUPERVISORS OF THE CITY OF OMAHA, NEBRASKA, ON THIS 23rd DAY OF August, 1940.



THIS PLAT OF GEORGETOWNE REPLAT V. AS PERMITTED BY THE CITY ENGINEER'S OFFICE THIS 23rd DAY OF August, 1940.



APPROVED BY THE CITY COUNCIL OF THE CITY OF OMAHA, NEBRASKA, ON THIS 23rd DAY OF August, 1940.



APPROVED BY THE CITY COUNCIL OF THE CITY OF OMAHA, NEBRASKA, ON THIS 23rd DAY OF August, 1940.

KNOW ALL MEN BY THESE PRESENTS THAT WE, COMMISSIONERS OF THE STATE OF NEBRASKA, HEREBY CERTIFY THAT THE REPLAT OF A PART OF LOT 4, GEORGETOWNE REPLAT, A PLATTED AND RECORDED SUBDIVISION IN DOUGLAS COUNTY, NEBRASKA, DESCRIBED AS FOLLOWS: [Description of the replat]...

BY [Signature] COUNTY ENGINEER

STATE OF NEBRASKA
COUNTY OF DOUGLAS
I HEREBY CERTIFY THAT I HAVE EXAMINED AND PLACED PERMANENT MARKERS AT THE CORNERS OF THE REPLAT OF A PART OF LOT 4, GEORGETOWNE REPLAT, A PLATTED AND RECORDED SUBDIVISION IN DOUGLAS COUNTY, NEBRASKA, DESCRIBED AS FOLLOWS: [Description of the replat]...

STATE OF NEBRASKA
COUNTY OF DOUGLAS
I HEREBY CERTIFY THAT I HAVE EXAMINED AND PLACED PERMANENT MARKERS AT THE CORNERS OF THE REPLAT OF A PART OF LOT 4, GEORGETOWNE REPLAT, A PLATTED AND RECORDED SUBDIVISION IN DOUGLAS COUNTY, NEBRASKA, DESCRIBED AS FOLLOWS: [Description of the replat]...

STATE OF NEBRASKA
COUNTY OF DOUGLAS
I HEREBY CERTIFY THAT I HAVE EXAMINED AND PLACED PERMANENT MARKERS AT THE CORNERS OF THE REPLAT OF A PART OF LOT 4, GEORGETOWNE REPLAT, A PLATTED AND RECORDED SUBDIVISION IN DOUGLAS COUNTY, NEBRASKA, DESCRIBED AS FOLLOWS: [Description of the replat]...

STATE OF NEBRASKA
COUNTY OF DOUGLAS
I HEREBY CERTIFY THAT I HAVE EXAMINED AND PLACED PERMANENT MARKERS AT THE CORNERS OF THE REPLAT OF A PART OF LOT 4, GEORGETOWNE REPLAT, A PLATTED AND RECORDED SUBDIVISION IN DOUGLAS COUNTY, NEBRASKA, DESCRIBED AS FOLLOWS: [Description of the replat]...