

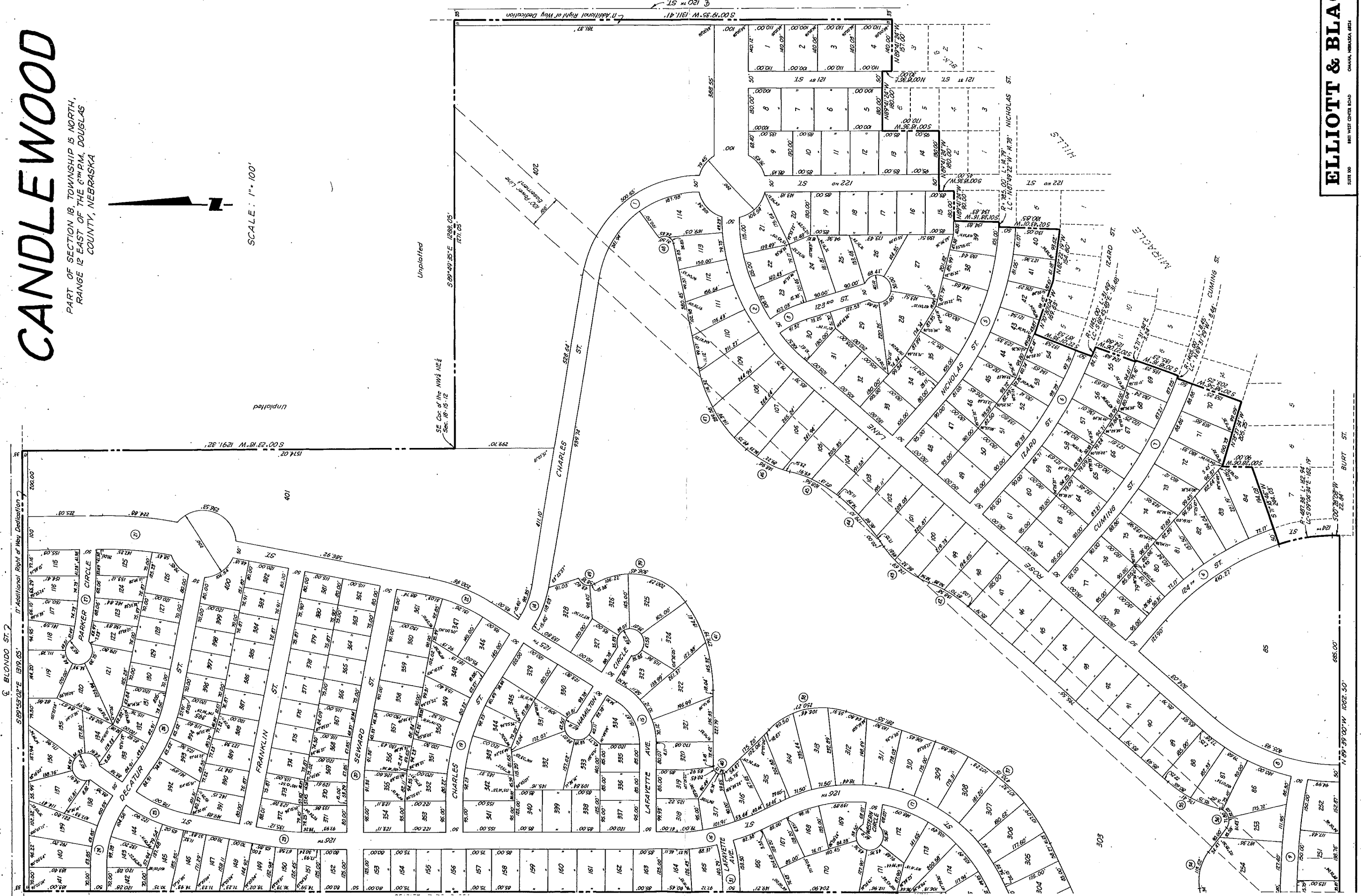
Filed 4-13-78 Book 1458, Page 583

CANDLEWOOD

PART OF SECTION 18, TOWNSHIP 15 NORTH,
RANGE 12 EAST OF THE 6TH RM., DOUGLAS
COUNTY, NEBRASKA



SCALE: 1" = 100'





COUNTY TRASMEN'S CERTIFICATE

This is to certify that I find as matter of official record on file in the records of this office...

APPROVAL OF CITY ENGINEER OF OMAHA

APPROVAL OF OMAHA PLANNING BOARD

APPROVAL OF OMAHA CITY COUNCIL

This plat of land containing an area of 745.452 acres more or less...

DEDICATION

ACKNOWLEDGMENT OF NOTARY

STATE OF NEBRASKA } COUNTY OF DOUGLAS }

On this 7th day of February 1972, before me, the undersigned, a Notary Public in and for the State of Nebraska...

Witness my hand and Notarial Seal at Omaha, Nebraska, in said county the day and year first above written.

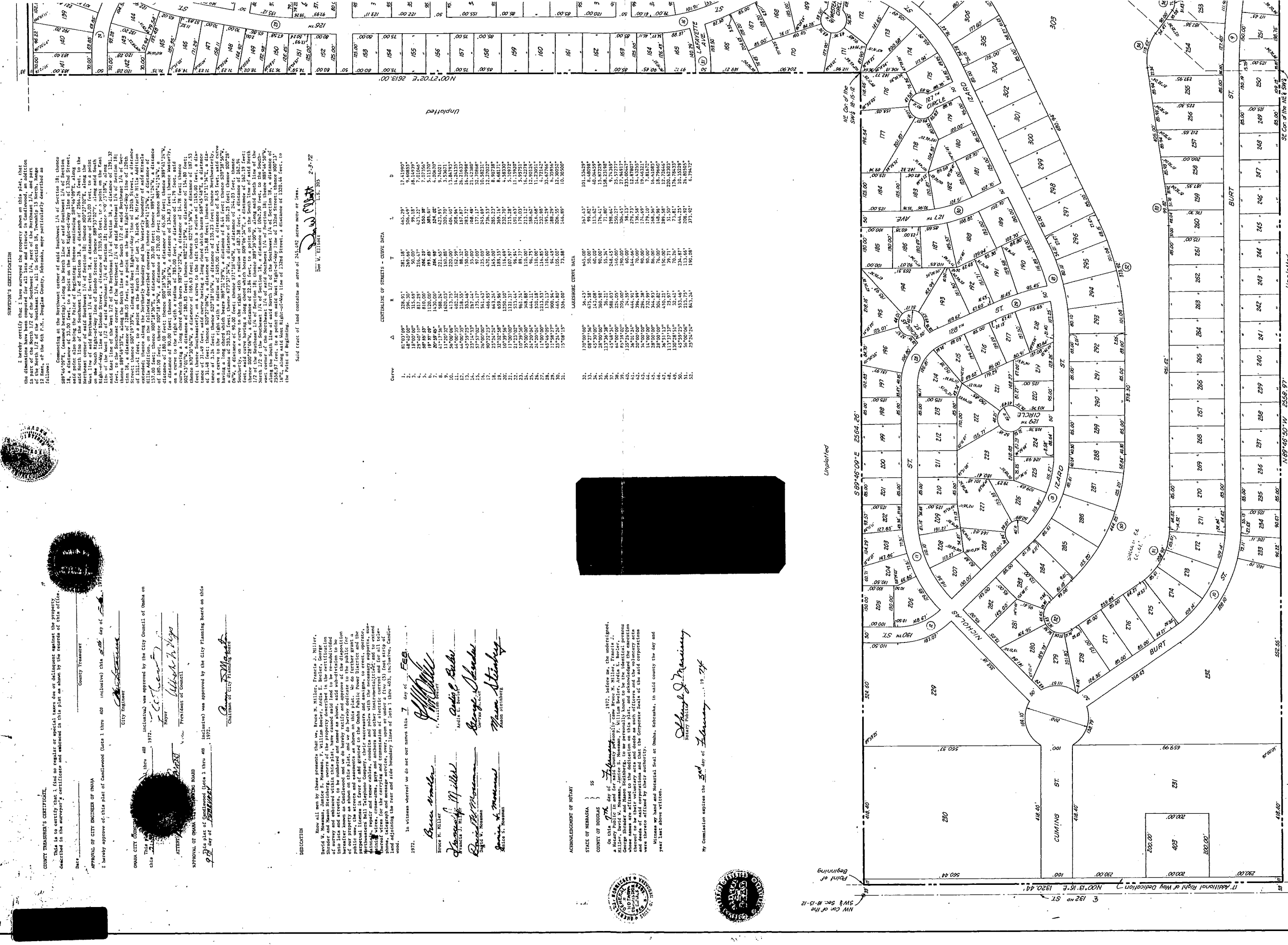
By Commission expires the 3rd day of February 1974



SURTOWER'S CERTIFICATION
I hereby certify that I have surveyed the property shown on this plat, that the dimensions have been computed for all lots and streets in accordance with the plat...

Table with columns: Curve, A, B, R, T, S, D. Contains numerical data for curve calculations.

Table with columns: Curve, A, B, R, T, S, D. Contains numerical data for curve calculations.



Unplatted, NW 1/4 Sec. 18-15-12, N 127° 40' 50" W 256.97', S 89° 40' 00" E 256.42', N 127° 40' 50" W 256.97', S 89° 40' 00" E 256.42'