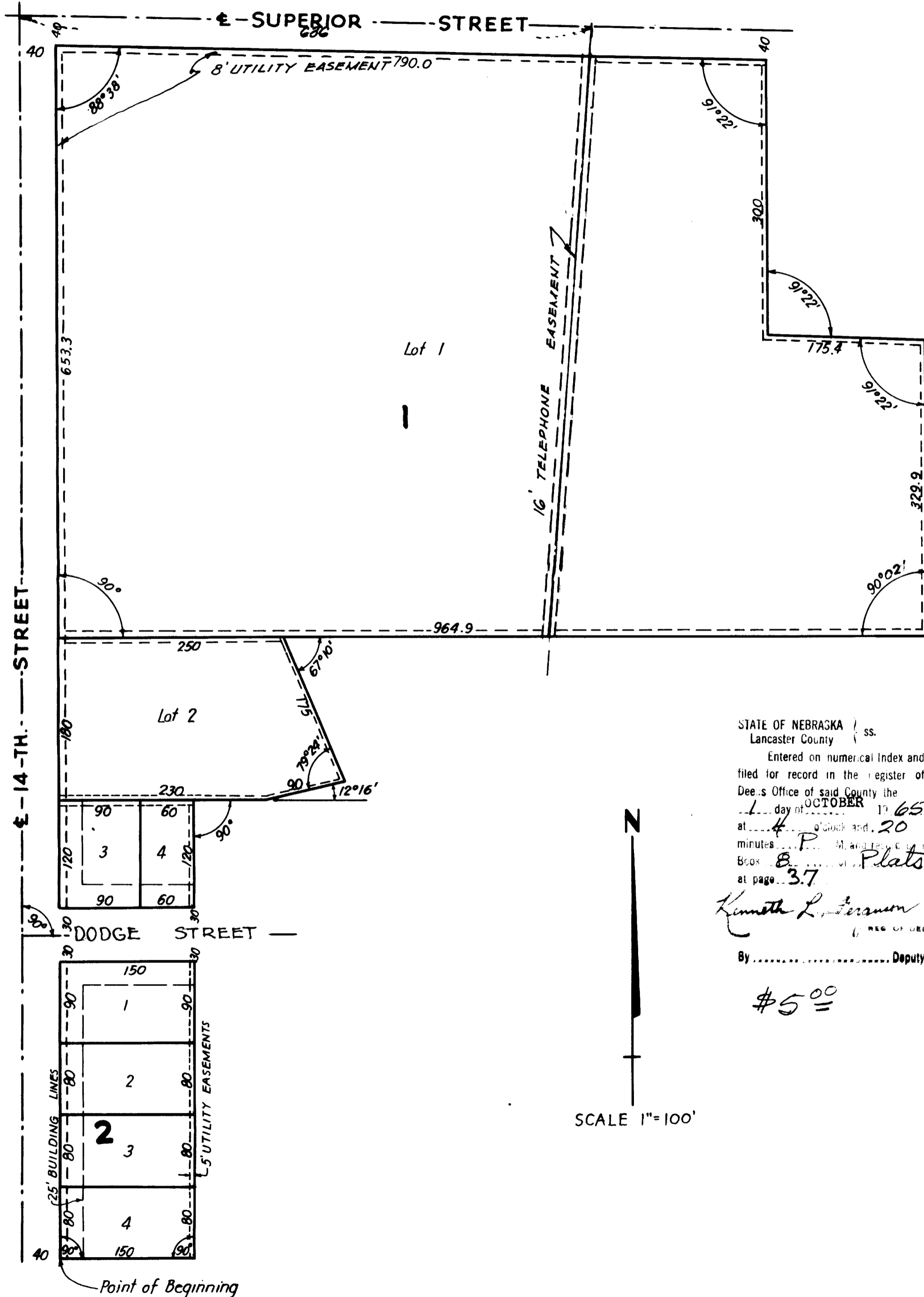


BEL - MAR , THIRD ADDITION



STATE OF NEBRASKA } ss.
 Lancaster County }
 Entered on numerical index and
 filed for record in the register of
 Deeds Office of said County the
 1 day of OCTOBER 1965
 at 4 P.M. and 20
 minutes of the day of
 Books 8 Plats
 at page 37
 Kenneth L. Ferguson
 REG. OF DEEDS
 By Deputy

\$5⁰⁰

SCALE 1"=100'

DEDICATION

The foregoing plat, known as "Bel-Mar, Third Addition," a replat of part of the W² NW⁴ Sec. 12, T.10N., R.6E. of the 6th P.M., Lancaster County, Nebraska, and more particularly described in the Surveyor's Certificate to this plat, is with the free consent and in accordance with the desire of the undersigned, sole owner and proprietor, and the easements shown thereon are hereby granted in perpetuity to the City of Lincoln, the Consumers Public Power District, the Lincoln Telephone and Telegraph Co., and other public utilities, their successors and assigns, to construct, operate, maintain, repair and replace storm sewers, sanitary sewers, water mains, conduits, buried cables, wires, poles and all appurtenances thereto, over, upon or under the easements as shown on the foregoing plat. The streets shown thereon are hereby dedicated to the use of the public.

Witness our hands this 26 day of February, 1965.

Karl A Witt Albert Bool
Catherine G. Witt Hazel V Bool

ACKNOWLEDGEMENT

STATE OF NEBRASKA } ss.
 LANCASTER COUNTY }

On this 26 day of February, 1965, before me, the undersigned, a Notary Public, duly commissioned, qualified for and residing in said County, personally came Karl A. Witt and Catherine G. Witt, husband and wife; and came Albert Bool and Hazel V. Bool, husband and wife, to me personally known to be the identical persons whose names are affixed to the foregoing instrument and they each acknowledged the same to be their voluntary act and deed.

Martin Scott
 NOTARY PUBLIC

My Commission expires the 12 day of December, 1965.

SURVEYOR'S CERTIFICATE

I hereby certify as follows:
 That I have accurately surveyed and staked with iron pipe the lots and streets in "Bel-Mar, Third Addition," as shown on the foregoing plat. The dimensions shown are in feet or decimals of a foot.

"Bel-Mar, Third Addition" is located in the W² NW⁴ Sec. 12, T.10N., R.6E. of the 6th P.M., Lancaster County, Nebraska, and is a replat of part of Lots 65 and 67 and all of Lot 66 of Irregular Tracts in the W² NW⁴ said Sec. 12 and more particularly described as beginning at the northwest corner of Lot 6, Block 12, Bel-Mar Addition; thence easterly at right angles to 14th Street and along north line said Lot 6 a distance of 150 feet; thence 90°00' Lt. a distance of 510 feet; thence 90°00' Rt. a distance of 80 feet; thence 12°16' Lt. a distance of 90 feet; thence 100°36' Lt. a distance of 175 feet; thence 112°50' Rt. a distance of 714.9 feet; thence 89°58' Lt. a distance of 329.9 feet; thence 88°38' Lt. a distance of 175.4 feet; thence 88°38' Rt. a distance of 300 feet to a point 40 feet south of the E of Superior Street; thence 88°38' Lt. 40 feet south of and parallel to Superior Street E a distance of 790 feet; to a point 40 feet east of the E of 14th Street; thence 91°22' Lt., 40 feet east of and parallel to E 14th Street a distance of 1343.3 feet to the point of beginning.

Signed this 26 day of February, 1965.

M. C. Shaffer
 ENGINEER E-205, L.S. 55

APPROVAL

The foregoing plat was approved by the Lincoln City - Lancaster County Planning Commission on this 10th day of MARCH, 1965.

ATTEST: E. Baerhuener
 CHAIRMAN

ACCEPTANCE

The foregoing plat and dedication approved and accepted by the City Council of the City of Lincoln, Nebraska, by Ordinance No. 8749, passed the 14th day of June, 1965.

ATTEST: Harold W. Springer
 CITY CLERK