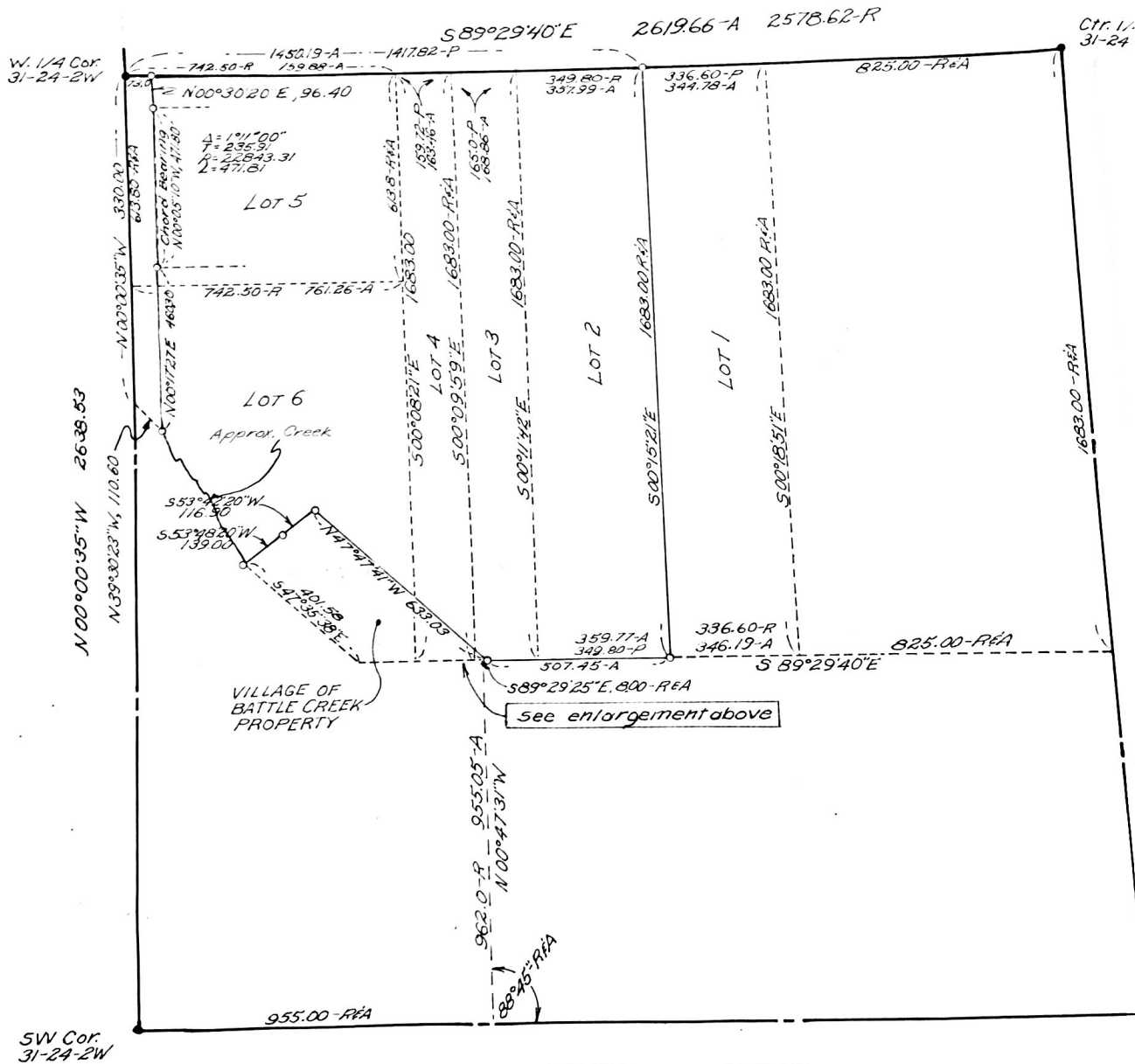


DETAIL
SCALE: 1" = 100'

● — E
○ — S
— A —
— R —



THE STATE OF NEBRASKA }
MADISON COUNTY } ss.

N89°32'30"W 2633.65

Chg # 12.50
No. 4100 -
Paged -
General -
Indexed -

This instrument filed for record
the 13 day of July 19 93
at 9:00 o'clock A.M. and recorded in
Cub-3 of Plats
Page 59(A)
John L. Harwood
Register of Deeds
Deputy Reg. of Deeds

PLAT
SCALE: 1" = 300'

Notary Public Bill L. ...

CORNER TIES

W. 1/4th. Corner Sec. 31, T24N, R2W
Fd. 1" pipe and plastic cap
NE 71.30 to nail in gate post
E. 68.50 to "X" cut in ROW marker
SE 70.91 to nail in fence post
SW 86.45 to nail in fence post

SW Corner Sec. 31, T24N, R2W
Fd 1-1/4" pipe
NE 52.25 to nail in power pole
NW 40.35 to nail in power pole
SW 43.17 to nail in power pole

Ctr. 1/4th. Corner, Sec. 31, T24N, R2W
Fd. 5/8" pipe
N. 8.97 to nail on top of brace post
WNW 2.32 to nail on top of corner post
E. 24.77 to nail on top of gate post

S. 1/4th. Corner, Sec. 31, T24N, R2W
found 1-1/4" pipe
N. 45.89 to nail in top of post
NW 44.58 to nail in top of post
E. 46.97 to "X" cut in Hdwl.
(S. side of Road)
NE 46.34 nail in top of Cor. post
N. 3' to near ctr. of Road

shown

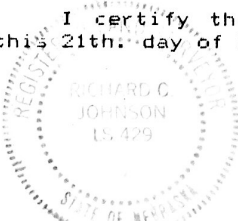
SURVEYOR'S CERTIFICATE

I, Richard C. Johnson, Registered Land Surveyor in the State of Nebraska, have at the request of Lynn D. Hutton Jr., directed and supervised the survey of a tract of land lying wholly in Lots 2 thru 6 of Fielden J. Hale's Suburban Lots to the Village of Battle Creek, Nebraska in the SW 1/4 of Section 31, Township 24 North, Range 2 West of the 6th P.M. Madison County, Nebraska and more particularly described as:

Commencing at the Northwest corner of the said southwest quarter; thence South 89 degrees 29 minutes 40 seconds East, along the North line of said quarter, a distance of 73.00 ft., to the Point of beginning; thence continuing along the said North line of said quarter, on the previously described course, a distance of 1450.19 ft., to the Northeast corner of Lot 2, of Fielden J. Hale's Suburban Lots to the Village of Battle Creek, filed for record, April 24th., 1905; thence South 00 degrees 15 minutes 21 seconds East, a distance of 1683.00 ft., to the Southeast corner of said Lot 2; thence North 89 degrees 29 minutes 40 seconds West, along the southerly lines of Lots 2 and 3, of said subdivision, a distance of 507.45 ft., to the most easterly corner of a tract of land Deeded to the Village of Battle Creek; thence North 47 degrees 47 minutes 41 seconds West, 633.03 ft.; thence South 53 degrees 42 minutes 20 seconds West, 116.90 ft.; thence South 53 degrees 48 minutes 20 seconds West, 139.00 ft., to the most westerly corner of said tract; thence northwesterly along a creek, to a point on the easterly line of a Highway Right-of-Way; thence North 00 degrees 17 minutes 27 seconds East, along said highway, a distance of 460.30 ft., to a point of curvature to the right, said curve having a Central angle of 01 degree 11 minutes 00 seconds, a Radius of 22843.31 ft., a Chord bearing of North 00 degrees 05 minutes 10 seconds West, 471.80 ft.; thence North 00 degrees 30 minutes 20 seconds East, 96.40 ft., to the point of beginning.

I certify that the dimensions and locations shown on the plat above are true and correct to the best of my knowledge and belief.

I certify that I have executed the above instrument this 21th day of May, 1993



Richard C. Johnson
Registered Land Surveyor