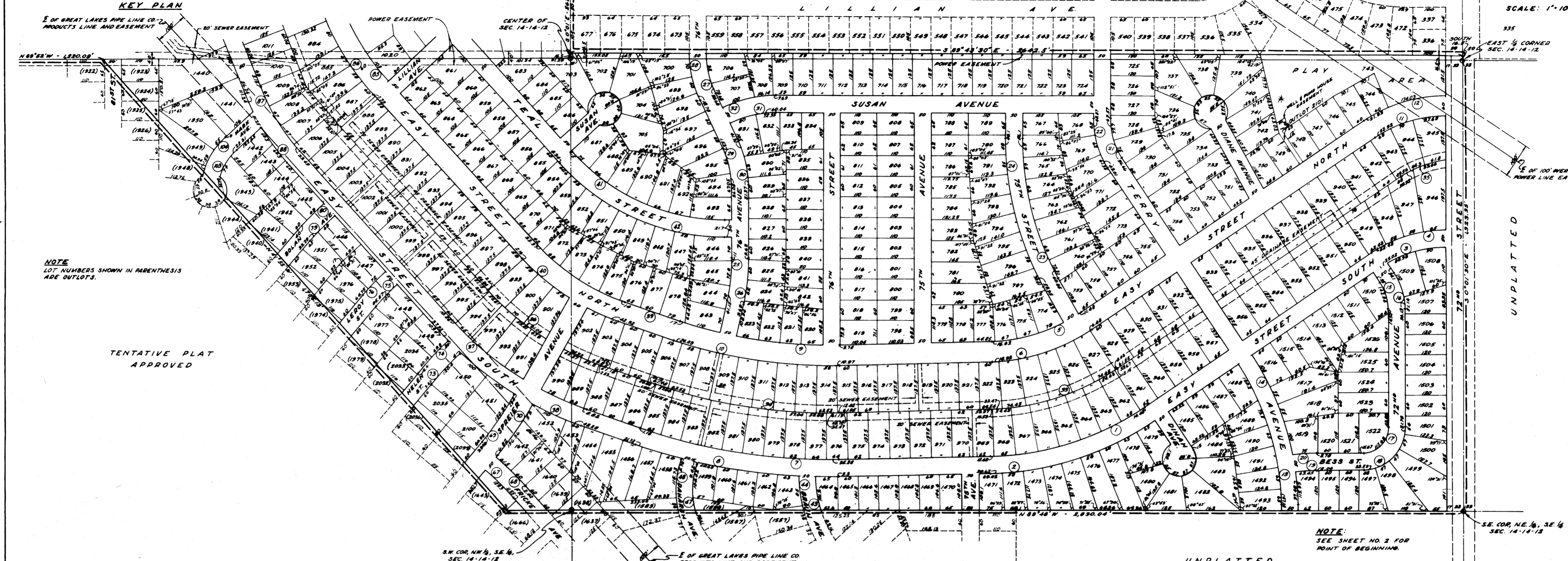
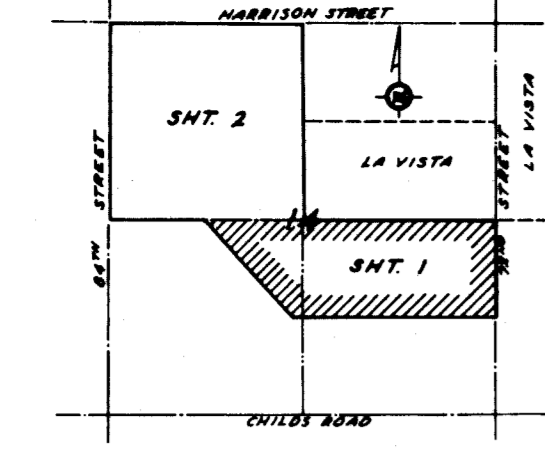


# LA VISTA

A SUBDIVISION LOCATED IN THE NORTH 1/4 OF THE S.E. 1/4, THE SW 1/4 AND THE NW 1/4 OF SEC. 14, TOWNSHIP 14 NORTH, RANGE 12 EAST OF THE 6TH R.M., SARBY COUNTY, NEBRASKA

OUTLOT 678, LOTS 679 THRU 1526 INCL., LOTS 1640, 1641, 1642, 1942, 1951, 1952, 1976, 1977, 2034, 2035 & 2100, OUTLOTS 1537, 1587, 1588, 1589, 1637, 1638, 1639, 1643, 1644, 1922, 1923, 1924, 1925, 1926, 1940, 1941, 1943, 1944, 1945, 1946, 1948, 1953, 1974, 1975, 1978, 1979, 2032, 2033, 2036 & 2099. + OUTLOT 2101



NOTE: LOT NUMBERS SHOWN IN PARENTHESES ARE OUTLOTS.

TENTATIVE PLAT APPROVED

TENTATIVE PLAT APPROVED

NOTE: SEE SHEET NO. 2 FOR POINT OF BEGINNING.

**CURVE DATA**

STATION	CHORD	ANGLE	CHORD	ANGLE	CHORD	ANGLE	CHORD	ANGLE	CHORD	ANGLE																																																																																																																																																																																													
1. 130° 40' -- 247.77 -- 894.5 -- 6.7964 -- 482.10	105. 420° 12' 51" -- 124.77 -- 333.28 -- 17.725 -- 238.14	2. 130° 40' -- 262.43 -- 895.5 -- 6.5982 -- 510.62	106. 420° 12' 51" -- 144.07 -- 373.28 -- 15.350 -- 274.98	3. 130° 43' -- 105.00 -- 346.58 -- 16.5317 -- 204.00	107. 200° 03' -- 20.91 -- 118.29 -- 48.444 -- 41.30	4. 130° 43' -- 120.14 -- 376.58 -- 16.9000 -- 233.40	108. 200° 03' -- 29.75 -- 168.29 -- 34.048 -- 58.750	5. 130° 40' -- 149.6 -- 510.5 -- 11.221 -- 291.1	109. 200° 02' 51" -- 89.26 -- 504.80 -- 11.350 -- 176.57	6. 130° 40' -- 167.18 -- 570.5 -- 10.900 -- 325.41	110. 200° 02' 51" -- 99.8 -- 564.80 -- 10.145 -- 197.96	7. 130° 52' 51" -- 301.25 -- 1719.38 -- 3.3333 -- 596.46	111. 90° 25' 51" -- 20.87 -- 253.28 -- 22.6215 -- 41.66	8. 130° 52' 51" -- 310.00 -- 1769.38 -- 3.2881 -- 613.80	112. 90° 25' 51" -- 25.00 -- 301.28 -- 18.9910 -- 49.89	9. 130° 52' 51" -- 242.94 -- 1884.38 -- 4.1387 -- 480.22	113. 52° 1' 51" -- 215.60 -- 441.80 -- 12.970 -- 401.16	10. 130° 52' 51" -- 253.06 -- 1944.38 -- 3.9667 -- 501.06	114. 52° 1' 51" -- 240.00 -- 491.80 -- 12.970 -- 401.16	11. 130° 54' 51" -- 132.60 -- 378.58 -- 15.299 -- 226.61	115. 420° 43' -- 85.14 -- 217.71 -- 26.318 -- 162.31	12. 130° 54' 51" -- 134.81 -- 434.58 -- 13.181 -- 255.95	116. 420° 43' -- 85.14 -- 217.71 -- 26.318 -- 162.31	13. 130° 56' 51" -- 224.53 -- 776.14 -- 7.7834 -- 435.85	117. 420° 38' 51" -- 110.00 -- 267.93 -- 21.3866 -- 208.75	14. 130° 56' 51" -- 239.89 -- 786.14 -- 7.2887 -- 465.49	118. 420° 38' 51" -- 134.63 -- 327.93 -- 17.4719 -- 255.50	15. 130° 53' 51" -- 42.52 -- 140.32 -- 46.835 -- 82.52	119. 50° 51' -- 196.15 -- 367.64 -- 16.282 -- 353.15	16. 130° 43' -- 57.67 -- 190.52 -- 30.106 -- 112.03	120. 50° 52' -- 230.00 -- 407.64 -- 14.0560 -- 418.78	17. 90° 15' -- 75.00 -- 74.67 -- 76.730 -- 117.62	121. 41° 42' -- 57.37 -- 150.62 -- 38.142 -- 109.61	18. 90° 15' -- 105.21 -- 124.67 -- 45.96 -- 196.37	122. 41° 42' -- 76.41 -- 200.62 -- 28.560 -- 146.01	19. 80° 55' 51" -- 33.70 -- 407.24 -- 14.067 -- 63.45	123. 23° 54' 51" -- 61.08 -- 290.59 -- 19.7170 -- 120.41	20. 80° 55' 51" -- 35.60 -- 442.24 -- 12.531 -- 71.22	124. 23° 54' 51" -- 75.00 -- 300.62 -- 16.8235 -- 141.13	21. 140° 0' -- 64.0 -- 208.33 -- 27.372 -- 124.23	125. 23° 43' -- 131.35 -- 625.56 -- 9.1591 -- 258.94	22. 140° 0' -- 79.28 -- 255.33 -- 22.095 -- 153.88	126. 23° 43' -- 141.84 -- 675.56 -- 8.4812 -- 279.63	23. 140° 0' -- 220.0 -- 821.96 -- 6.9593 -- 439.95	127. 40° 16' -- 129.06 -- 288.06 -- 15.8902 -- 242.66	24. 140° 0' -- 233.25 -- 871.96 -- 6.5563 -- 456.05	128. 40° 16' -- 151.95 -- 338.16 -- 16.9484 -- 284.79	25. 120° 13' -- 62.66 -- 286.17 -- 9.7748 -- 124.97	129. 90° -- 180.00 -- 180.00 -- 31.8310 -- 283.78	26. 120° 13' -- 68.00 -- 636.17 -- 9.0276 -- 135.32	130. 90° -- 230.00 -- 230.00 -- 24.9112 -- 361.28	27. 120° 13' -- 64.00 -- 270.00 -- 21.218 -- 125.68	131. 41° 44' 51" -- 148.84 -- 390.31 -- 14.6795 -- 284.35	28. 120° 13' -- 75.94 -- 320.04 -- 17.924 -- 148.78	132. 41° 44' 51" -- 167.92 -- 440.31 -- 13.0126 -- 320.77	29. 120° 13' -- 52.26 -- 220.04 -- 25.999 -- 102.38	133. 41° 15' 51" -- 133.61 -- 390.02 -- 15.2332 -- 291.05	30. 120° 13' -- 81.48 -- 270.00 -- 21.218 -- 125.68	134. 41° 15' 51" -- 165.00 -- 448.07 -- 15.9645 -- 316.01	31. 120° 40' 51" -- 71.31 -- 300.89 -- 19.048 -- 140.04	135. 40° 29' -- 167.88 -- 371.95 -- 15.4001 -- 314.74	32. 120° 40' 51" -- 81.48 -- 350.89 -- 16.282 -- 163.83	136. 39° 29' -- 190.00 -- 461.92 -- 15.2788 -- 352.05	33. 120° 40' 51" -- 107.18 -- 708.00 -- 8.0926 -- 403.75	137. 42° 45' -- 60.00 -- 314.63 -- 18.2105 -- 135.91	34. 120° 40' 51" -- 120.00 -- 800.00 -- 7.6218 -- 440.75	138. 42° 45' -- 60.00 -- 314.63 -- 18.2105 -- 135.91	35. 120° 40' 51" -- 127.18 -- 850.00 -- 7.1618 -- 476.75	139. 46° 07' -- 135.00 -- 317.13 -- 18.0649 -- 255.25	36. 120° 17' 51" -- 209.77 -- 800.77 -- 7.1377 -- 410.39	140. 46° 07' -- 150.27 -- 367.13 -- 15.6466 -- 299.46	37. 120° 17' 51" -- 225.77 -- 850.77 -- 6.6961 -- 446.39	141. 41° 51' -- 73.79 -- 130.84 -- 43.7907 -- 134.39	38. 120° 17' 51" -- 238.70 -- 900.27 -- 3.7861 -- 506.21	142. 30° 51' -- 102.00 -- 180.84 -- 31.8891 -- 186.74	39. 120° 17' 51" -- 255.70 -- 950.27 -- 3.2467 -- 542.21	143. 41° 32' 51" -- 110.00 -- 290.02 -- 19.7558 -- 210.27	40. 120° 17' 51" -- 270.00 -- 1000.00 -- 2.6136 -- 578.21	144. 41° 32' 51" -- 110.00 -- 290.02 -- 19.7558 -- 210.27	41. 120° 17' 51" -- 280.00 -- 1050.00 -- 2.0732 -- 614.21	145. 40° 45' -- 145.00 -- 364.63 -- 15.7134 -- 374.99	42. 120° 17' 51" -- 290.00 -- 1100.00 -- 1.5328 -- 650.21	146. 40° 15' 51" -- 221.40 -- 444.48 -- 10.523 -- 420.56	43. 120° 17' 51" -- 300.00 -- 1150.00 -- 1.0924 -- 686.21	147. 39° 43' -- 190.27 -- 514.63 -- 14.6066 -- 466.21	44. 120° 17' 51" -- 310.00 -- 1200.00 -- 0.6520 -- 722.21	148. 39° 43' -- 190.27 -- 514.63 -- 14.6066 -- 466.21	45. 120° 17' 51" -- 320.00 -- 1250.00 -- 0.2116 -- 758.21	149. 30° 51' -- 54.80 -- 180.16 -- 31.808 -- 104.38	46. 120° 17' 51" -- 330.00 -- 1300.00 -- 0.0000 -- 800.00	150. 30° 51' -- 54.80 -- 180.16 -- 31.808 -- 104.38	47. 70° 44' 51" -- 98.97 -- 871.54 -- 6.5743 -- 117.75	151. 30° 51' -- 76.00 -- 230.16 -- 24.895 -- 131.90	48. 70° 44' 51" -- 109.00 -- 921.54 -- 6.1277 -- 124.75	152. 30° 51' -- 76.00 -- 230.16 -- 24.895 -- 131.90	49. 70° 44' 51" -- 119.00 -- 971.54 -- 5.6811 -- 131.75	153. 30° 51' 51" -- 115.21 -- 378.53 -- 15.1363 -- 223.60	50. 70° 44' 51" -- 129.00 -- 1021.54 -- 5.2345 -- 138.75	154. 30° 51' 51" -- 115.21 -- 378.53 -- 15.1363 -- 223.60	51. 70° 44' 51" -- 139.00 -- 1071.54 -- 4.7879 -- 145.75	155. 30° 51' 51" -- 115.21 -- 378.53 -- 15.1363 -- 223.60	52. 70° 44' 51" -- 149.00 -- 1121.54 -- 4.3413 -- 152.75	156. 30° 51' 51" -- 115.21 -- 378.53 -- 15.1363 -- 223.60	53. 70° 44' 51" -- 159.00 -- 1171.54 -- 3.8947 -- 159.75	157. 30° 51' 51" -- 115.21 -- 378.53 -- 15.1363 -- 223.60	54. 70° 44' 51" -- 169.00 -- 1221.54 -- 3.4481 -- 166.75	158. 30° 51' 51" -- 115.21 -- 378.53 -- 15.1363 -- 223.60	55. 70° 44' 51" -- 179.00 -- 1271.54 -- 3.0015 -- 173.75	159. 30° 51' 51" -- 115.21 -- 378.53 -- 15.1363 -- 223.60	56. 70° 44' 51" -- 189.00 -- 1321.54 -- 2.5549 -- 180.75	160. 30° 51' 51" -- 115.21 -- 378.53 -- 15.1363 -- 223.60	57. 70° 44' 51" -- 199.00 -- 1371.54 -- 2.1083 -- 187.75	161. 30° 51' 51" -- 115.21 -- 378.53 -- 15.1363 -- 223.60	58. 70° 44' 51" -- 209.00 -- 1421.54 -- 1.6617 -- 194.75	162. 30° 51' 51" -- 115.21 -- 378.53 -- 15.1363 -- 223.60	59. 70° 44' 51" -- 219.00 -- 1471.54 -- 1.2151 -- 201.75	163. 30° 51' 51" -- 115.21 -- 378.53 -- 15.1363 -- 223.60	60. 70° 44' 51" -- 229.00 -- 1521.54 -- 0.7685 -- 208.75	164. 30° 51' 51" -- 115.21 -- 378.53 -- 15.1363 -- 223.60	61. 70° 44' 51" -- 239.00 -- 1571.54 -- 0.3219 -- 215.75	165. 30° 51' 51" -- 115.21 -- 378.53 -- 15.1363 -- 223.60	62. 70° 44' 51" -- 249.00 -- 1621.54 -- 0.0000 -- 222.75	166. 30° 51' 51" -- 115.21 -- 378.53 -- 15.1363 -- 223.60	63. 70° 44' 51" -- 259.00 -- 1671.54 -- 0.0000 -- 229.75	167. 30° 51' 51" -- 115.21 -- 378.53 -- 15.1363 -- 223.60	64. 70° 44' 51" -- 269.00 -- 1721.54 -- 0.0000 -- 236.75	168. 30° 51' 51" -- 115.21 -- 378.53 -- 15.1363 -- 223.60	65. 70° 44' 51" -- 279.00 -- 1771.54 -- 0.0000 -- 243.75	169. 30° 51' 51" -- 115.21 -- 378.53 -- 15.1363 -- 223.60	66. 70° 44' 51" -- 289.00 -- 1821.54 -- 0.0000 -- 250.75	170. 30° 51' 51" -- 115.21 -- 378.53 -- 15.1363 -- 223.60	67. 70° 44' 51" -- 299.00 -- 1871.54 -- 0.0000 -- 257.75	171. 30° 51' 51" -- 115.21 -- 378.53 -- 15.1363 -- 223.60	68. 70° 44' 51" -- 309.00 -- 1921.54 -- 0.0000 -- 264.75	172. 30° 51' 51" -- 115.21 -- 378.53 -- 15.1363 -- 223.60	69. 70° 44' 51" -- 319.00 -- 1971.54 -- 0.0000 -- 271.75	173. 30° 51' 51" -- 115.21 -- 378.53 -- 15.1363 -- 223.60	70. 70° 44' 51" -- 329.00 -- 2021.54 -- 0.0000 -- 278.75	174. 30° 51' 51" -- 115.21 -- 378.53 -- 15.1363 -- 223.60	71. 70° 44' 51" -- 339.00 -- 2071.54 -- 0.0000 -- 285.75	175. 30° 51' 51" -- 115.21 -- 378.53 -- 15.1363 -- 223.60	72. 70° 44' 51" -- 349.00 -- 2121.54 -- 0.0000 -- 292.75	176. 30° 51' 51" -- 115.21 -- 378.53 -- 15.1363 -- 223.60	73. 70° 44' 51" -- 359.00 -- 2171.54 -- 0.0000 -- 299.75	177. 30° 51' 51" -- 115.21 -- 378.53 -- 15.1363 -- 223.60	74. 70° 44' 51" -- 369.00 -- 2221.54 -- 0.0000 -- 306.75	178. 30° 51' 51" -- 115.21 -- 378.53 -- 15.1363 -- 223.60	75. 70° 44' 51" -- 379.00 -- 2271.54 -- 0.0000 -- 313.75	179. 30° 51' 51" -- 115.21 -- 378.53 -- 15.1363 -- 223.60	76. 70° 44' 51" -- 389.00 -- 2321.54 -- 0.0000 -- 320.75	180. 30° 51' 51" -- 115.21 -- 378.53 -- 15.1363 -- 223.60	77. 70° 44' 51" -- 399.00 -- 2371.54 -- 0.0000 -- 327.75	181. 30° 51' 51" -- 115.21 -- 378.53 -- 15.1363 -- 223.60	78. 70° 44' 51" -- 409.00 -- 2421.54 -- 0.0000 -- 334.75	182. 30° 51' 51" -- 115.21 -- 378.53 -- 15.1363 -- 223.60	79. 70° 44' 51" -- 419.00 -- 2471.54 -- 0.0000 -- 341.75	183. 30° 51' 51" -- 115.21 -- 378.53 -- 15.1363 -- 223.60	80. 70° 44' 51" -- 429.00 -- 2521.54 -- 0.0000 -- 348.75	184. 30° 51' 51" -- 115.21 -- 378.53 -- 15.1363 -- 223.60	81. 70° 44' 51" -- 439.00 -- 2571.54 -- 0.0000 -- 355.75	185. 30° 51' 51" -- 115.21 -- 378.53 -- 15.1363 -- 223.60	82. 70° 44' 51" -- 449.00 -- 2621.54 -- 0.0000 -- 362.75	186. 30° 51' 51" -- 115.21 -- 378.53 -- 15.1363 -- 223.60	83. 70° 44' 51" -- 459.00 -- 2671.54 -- 0.0000 -- 369.75	187. 30° 51' 51" -- 115.21 -- 378.53 -- 15.1363 -- 223.60	84. 70° 44' 51" -- 469.00 -- 2721.54 -- 0.0000 -- 376.75	188. 30° 51' 51" -- 115.21 -- 378.53 -- 15.1363 -- 223.60	85. 70° 44' 51" -- 479.00 -- 2771.54 -- 0.0000 -- 383.75	189. 30° 51' 51" -- 115.21 -- 378.53 -- 15.1363 -- 223.60	86. 70° 44' 51" -- 489.00 -- 2821.54 -- 0.0000 -- 390.75	190. 30° 51' 51" -- 115.21 -- 378.53 -- 15.1363 -- 223.60	87. 70° 44' 51" -- 499.00 -- 2871.54 -- 0.0000 -- 397.75	191. 30° 51' 51" -- 115.21 -- 378.53 -- 15.1363 -- 223.60	88. 70° 44' 51" -- 509.00 -- 2921.54 -- 0.0000 -- 404.75	192. 30° 51' 51" -- 115.21 -- 378.53 -- 15.1363 -- 223.60	89. 70° 44' 51" -- 519.00 -- 2971.54 -- 0.0000 -- 411.75	193. 30° 51' 51" -- 115.21 -- 378.53 -- 15.1363 -- 223.60	90. 70° 44' 51" -- 529.00 -- 3021.54 -- 0.0000 -- 418.75	194. 30° 51' 51" -- 115.21 -- 378.53 -- 15.1363 -- 223.60	91. 70° 44' 51" -- 539.00 -- 3071.54 -- 0.0000 -- 425.75	195. 30° 51' 51" -- 115.21 -- 378.53 -- 15.1363 -- 223.60	92. 70° 44' 51" -- 549.00 -- 3121.54 -- 0.0000 -- 432.75	196. 30° 51' 51" -- 115.21 -- 378.53 -- 15.1363 -- 223.60	93. 70° 44' 51" -- 559.00 -- 3171.54 -- 0.0000 -- 439.75	197. 30° 51' 51" -- 115.21 -- 378.53 -- 15.1363 -- 223.60	94. 70° 44' 51" -- 569.00 -- 3221.54 -- 0.0000 -- 446.75	198. 30° 51' 51" -- 115.21 -- 378.53 -- 15.1363 -- 223.60	95. 70° 44' 51" -- 579.00 -- 3271.54 -- 0.0000 -- 453.75	199. 30° 51' 51" -- 115.21 -- 378.53 -- 15.1363 -- 223.60	96. 70° 44' 51" -- 589.00 -- 3321.54 -- 0.0000 -- 460.75	200. 30° 51' 51" -- 115.21 -- 378.53 -- 15.1363 -- 223.60	97. 70° 44' 51" -- 599.00 -- 3371.54 -- 0.0000 -- 467.75	201. 30° 51' 51" -- 115.21 -- 378.53 -- 15.1363 -- 223.60	98. 70° 44' 51" -- 609.00 -- 3421.54 -- 0.0000 -- 474.75	202. 30° 51' 51" -- 115.21 -- 378.53 -- 15.1363 -- 223.60	99. 70° 44' 51" -- 619.00 -- 3471.54 -- 0.0000 -- 481.75	203. 30° 51' 51" -- 115.21 -- 378.53 -- 15.1363 -- 223.60	100. 70° 44' 51" -- 629.00 -- 3521.54 -- 0.0000 -- 488.75	204. 30° 51' 51" -- 115.21 -- 378.53 -- 15.1363 -- 223.60

APPROVAL OF COUNTY SURVEYOR  
I HEREBY APPROVE OF THIS PLAT OF LA VISTA, THE LOTS NUMBERED AS SHOWN ON THIS  
19 DAY OF JULY A. D. 1961.

SARBY COUNTY BUILDING INSPECTOR  
THIS PLAT OF LA VISTA WAS APPROVED BY THE LA VISTA BOARD OF TRUSTEES THIS  
15 DAY OF August A. D. 1961.

APPROVAL OF THE LA VISTA BOARD OF TRUSTEES  
THIS PLAT OF LA VISTA WAS APPROVED BY THE LA VISTA BOARD OF TRUSTEES THIS  
15 DAY OF August A. D. 1961.

ATTEST:  
County Clerk  
County Treasurer

ACKNOWLEDGMENT OF NOTARY  
STATE OF NEBRASKA }  
COUNTY OF DOUGLAS }  
ON THIS 19 DAY OF JULY, A. D. 1961, BEFORE ME, A NOTARY PUBLIC DULY  
COMMISSIONED AND QUALIFIED IN AND FOR SAID COUNTY, PERSONALLY CAME ALMA H. SAUTTER,  
SINGLE, HARRY C. BROCKHOFF AND HEZEL H. BROCKHOFF, HUSBAND AND WIFE; WALTER WITTMUS  
AND EUNICE WITTMUS, HUSBAND AND WIFE, WHO ARE PERSONALLY KNOWN TO ME TO BE THE  
IDENTICAL PERSONS WHOSE NAMES ARE AFFIXED TO THE DECLARATION OF THIS PLAT AND THEY  
ACKNOWLEDGED THE EXECUTION THEREOF TO BE THEIR VOLUNTARY ACT AND DEED; AND FURTHER  
CAME DON BECKER, PRESIDENT OF BECKER ENTERPRISES, INC., A CORPORATION WHO IS PER-  
SONALLY KNOWN TO ME TO BE THE IDENTICAL PERSON WHOSE NAME IS AFFIXED TO THE DECLARATION  
OF THIS PLAT AND HE ACKNOWLEDGED HIS EXECUTION THEREOF TO BE HIS VOLUNTARY ACT AND DEED  
AS SUCH OFFICER AND THE VOLUNTARY ACT AND DEED OF SAID CORPORATION AND THE SEAL OF  
SAID CORPORATION WAS THEREBY AFFIXED BY HIS AUTHORITY.

WITNESS MY HAND AND NOTARIAL SEAL AT OMAHA, NEBRASKA, IN SAID COUNTY, THE DATE LAST  
APONSAID.  
Notary Public

IN WITNESS WHEREOF, WE DO HEREBY SET OUR HANDS THIS 3 DAY OF AUG  
A. D. 1961.  
ALMA H. SAUTTER  
HARRY C. BROCKHOFF  
HEZEL H. BROCKHOFF  
WALTER WITTMUS  
EUNICE WITTMUS  
DON BECKER

COUNTY TREASURER'S CERTIFICATE  
THIS IS TO CERTIFY THAT I FIND NO REGULAR OR SPECIAL TAXES DUE OR PAYABLE  
AGAINST THE PROPERTY DESCRIBED IN THE SURVEYING INSTRUMENT AND PLAT  
THIS PLAT AS SHOWN BY THE RECORDS OF THIS OFFICE.  
DATE 7-10-61

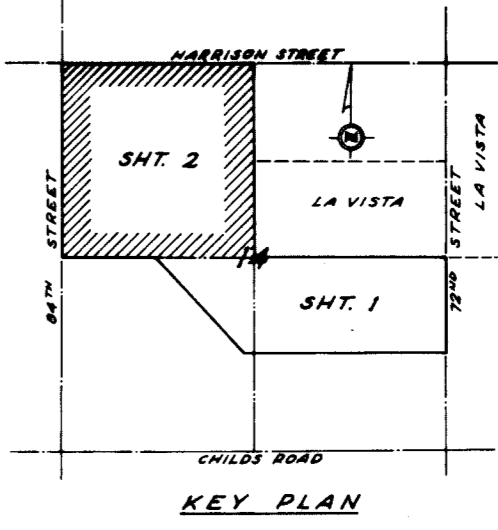
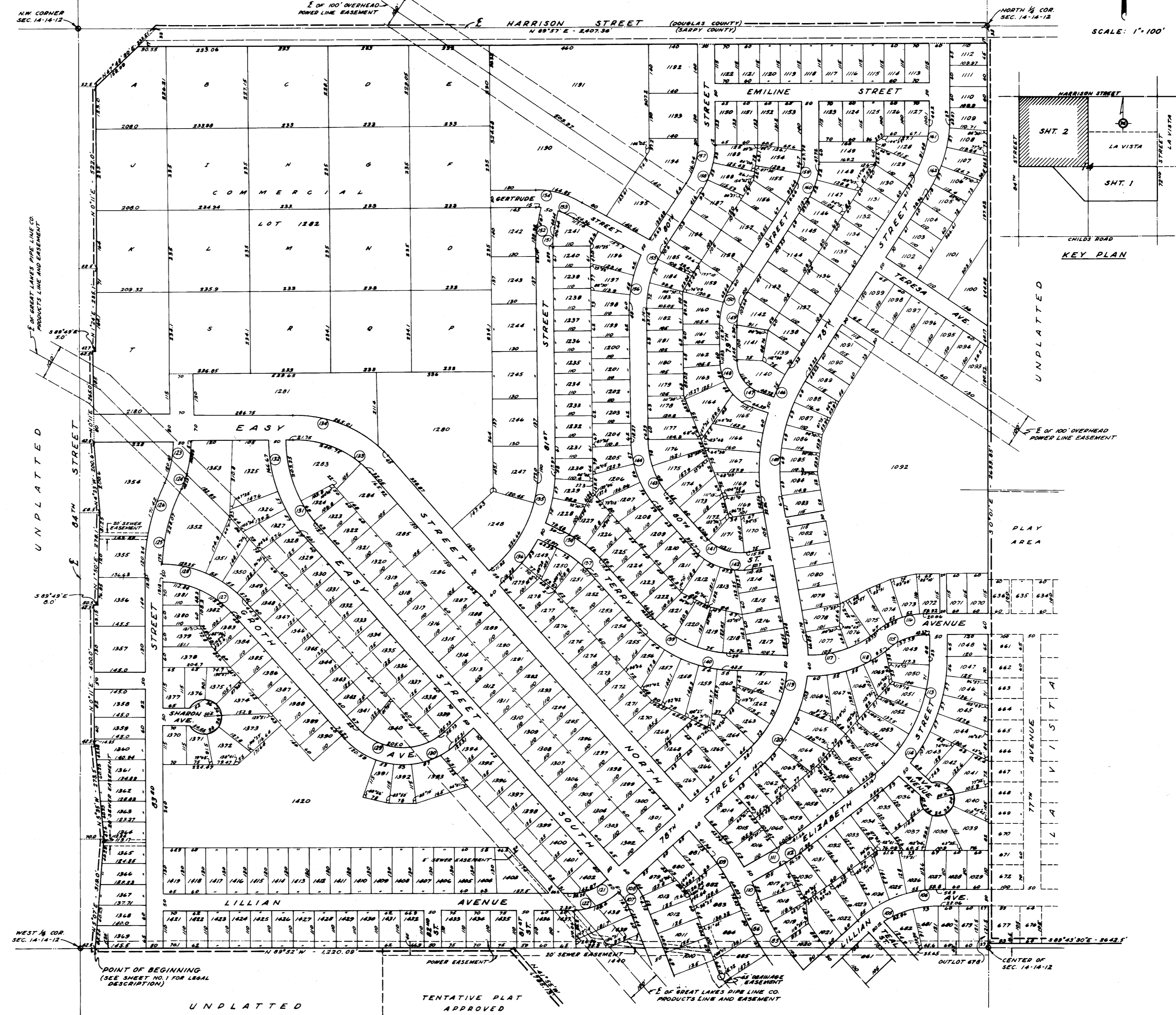
DECLARATION  
KNOW ALL MEN BY THESE PRESENTS: THAT WE ALMA H. SAUTTER, SINGLE, HARRY C.  
BROCKHOFF AND HEZEL H. BROCK

# LA VISTA

A SUBDIVISION LOCATED IN THE NORTH 1/4 OF THE S.E. 1/4, THE S.W. 1/4 AND THE N.W. 1/4 OF SEC. 14, TOWNSHIP 14 NORTH, RANGE 13 EAST OF THE 6TH RM., SARPY COUNTY, NEBRASKA

UNPLATTED

SCALE: 1" = 100'



STATE OF NEBRASKA  
COUNTY OF SARPY  
PLAT NO. 10 # 1  
Plat  
E. Ruff

Sheet # 2  
Page 1