

181

TAX LOT 21

N50°54'39"W
397.93'
S50°54'39"E
403.42'

RADIUS: 62.50'
CHORD BEARING: N39°01'50"E
CHORD DISTANCE: 66.00'
ARC DISTANCE: 323.17'

STATE OF
ENTERED
THIS 2
AT 11:04
288
COUNTY
Deputy

181

182

THENCE N56°45'52"W 350.23 FEET;

THENCE S00°14'57"E 118.25 FEET ON A LINE 66.00 FEET EAST OF AND PARALLEL WITH THE WEST LINE OF SAID NE 1/4 TO THE POINT OF BEGINNING.

COUNTY ROADS SUPERINTENDENT'S APPROVAL

THE ROAD EASEMENT AS SHOWN AND DESCRIBED HEREON WAS APPROVED BY THE WASHINGTON COUNTY ROAD SUPERINTENDENT ON THIS 27 DAY OF Aug, 1998.

Alan A. Doll
WASHINGTON COUNTY ROAD SUPERINTENDENT

COUNTY PLANNING COMMISSION APPROVAL

THE ROAD EASEMENT AS SHOWN AND DESCRIBED HEREON WAS APPROVED BY THE WASHINGTON COUNTY PLANNING COMMISSION ON THIS 15th DAY OF August, 1998.

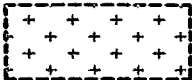
David O'Hara
Vice-CHAIRMAN

COUNTY BOARD OF SUPERVISOR'S APPROVAL

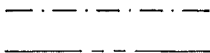
THE ROAD EASEMENT AS SHOWN AND DESCRIBED HEREON WAS APPROVED BY THE WASHINGTON COUNTY BOARD OF SUPERVISORS ON THIS 25th DAY OF August, 1998.

Eric Lopez
CHAIRMAN OF THE BOARD

ATTEST: *Charlotte J. Petersen*
WASHINGTON COUNTY CLERK



PROPOSED ROAD EASEMENT

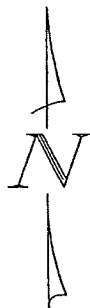


EXISTING PROPERTY LINE

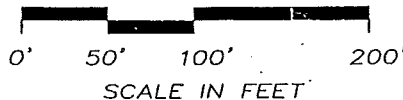


PROPOSED PROPERTY LINE

NEBRASKA COUNTY OF WASHINGTON) SS 984159
IN NUMERICAL INDEX AND FILED FOR RECORD
ON 17th DAY OF August A.D. 19 98
AT 2 O'CLOCK A.M. AND RECORDED IN BOOK
AT PAGE 181-188
CLERK *Charlotte J. Petersen*
Kasem Madisen



Recorded
General _____
Numerical _____
Photostat _____
Cashed _____



182

CURT HO

2 THOMPSON, DREESSEN & DORNER, INC.
Consulting Engineers & Land Surveyors

10836 OLD MILL ROAD
OMAHA, NE 68154
(402) 330 - 8860



1016-108

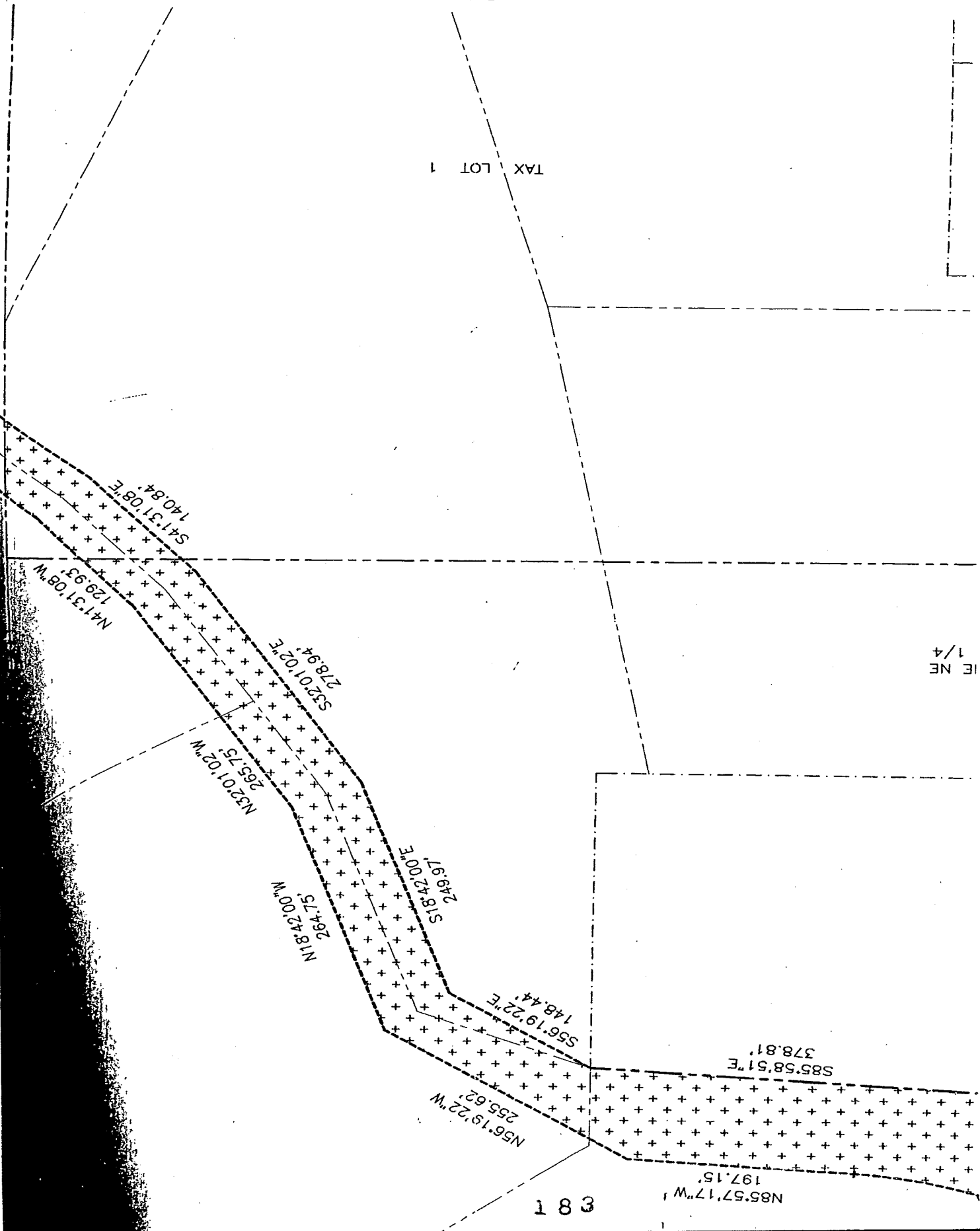
101610810.DWG

183

TAX LOT 1

1/4
E NE

183



TAX LOT 24

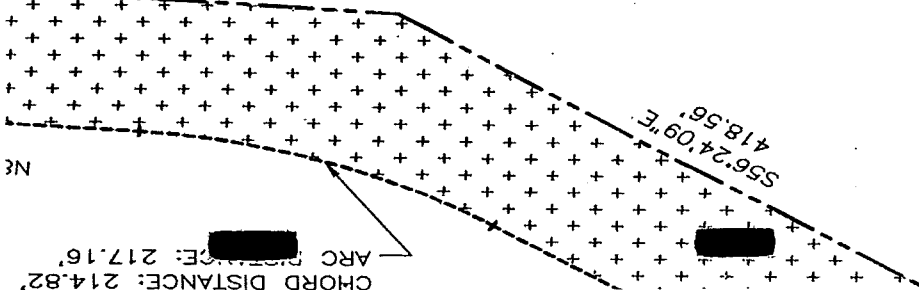
TAX LOT 22

TAX LOT 7

PART OF THE NE
1/4 OF NW 1/4

COUNTY ROAD P43

378.8
S85.58°E



NE

CHORD DISTANCE: 214.82'
ARC DISTANCE: 217.16'

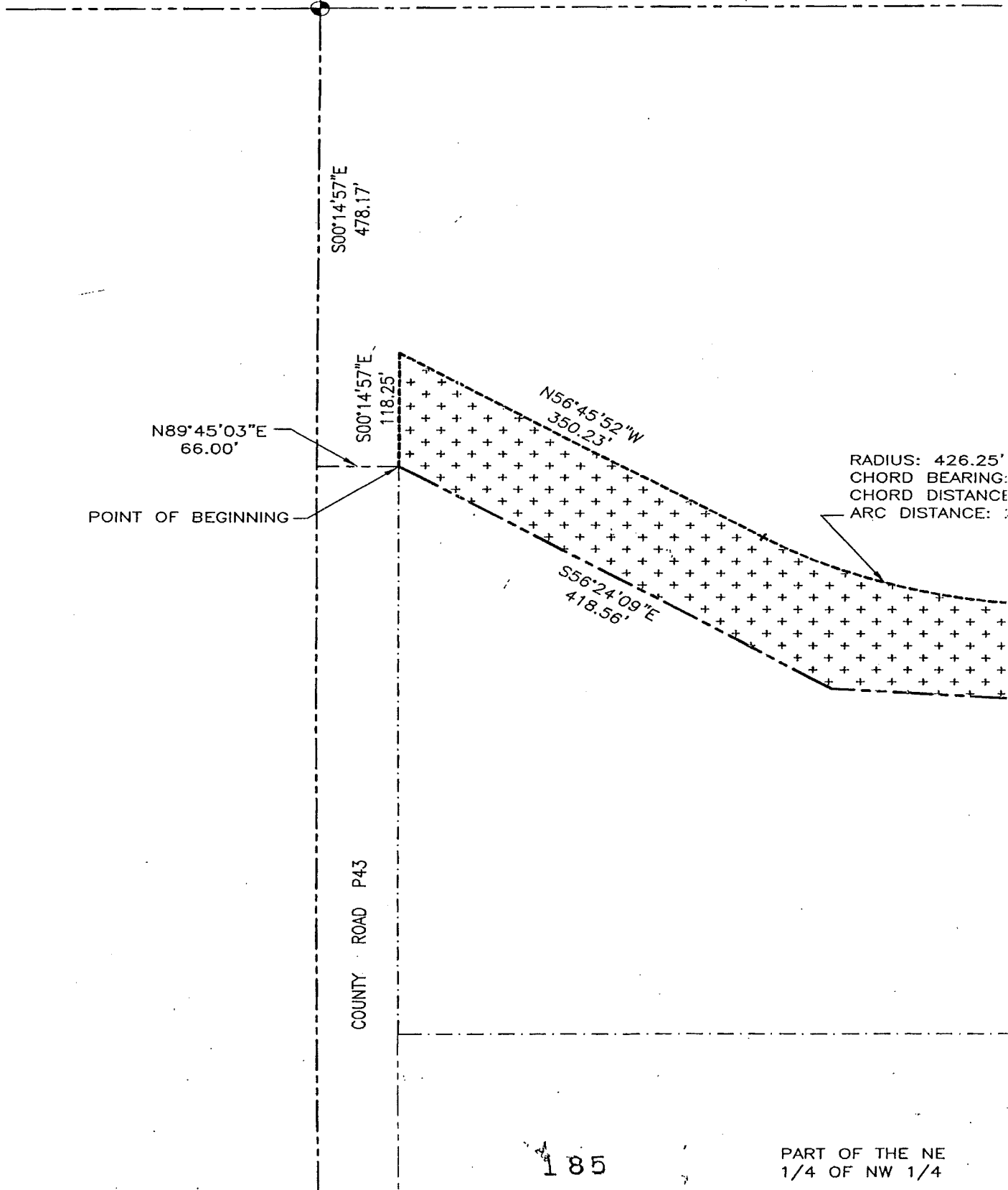
POINT OF BEGINNING

98 AUG 27 AM 11:06

185

CHARLOTTE E. BERGENSEN
WASHINGTON COUNTY, CLERK
BY J. D. NEBB

POINT OF COMMENCEMENT
NW CORNER OF THE NE 1/4
OF THE NW 1/4 OF SECTION
23-17-12



POINT OF BEGINNING

COUNTY ROAD P43

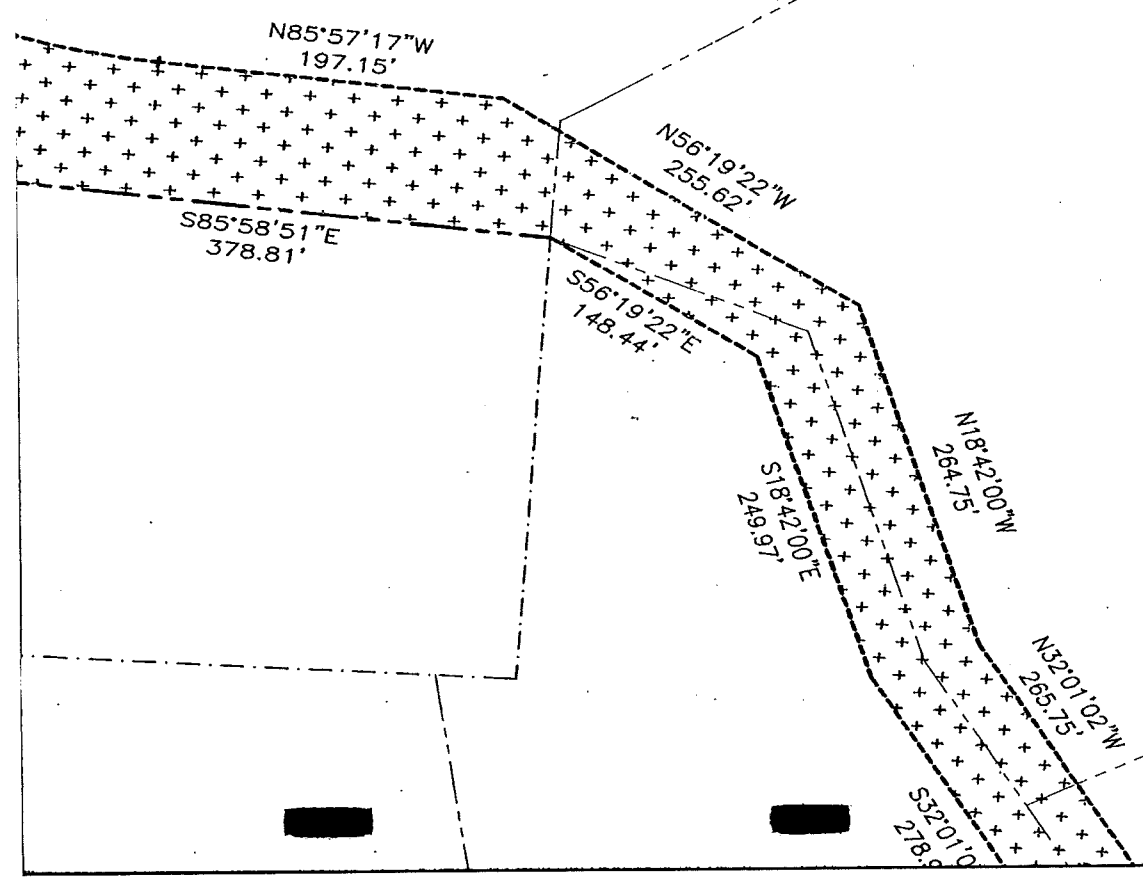
RADIUS: 426.25'
CHORD BEARING:
CHORD DISTANCE:
ARC DISTANCE: :

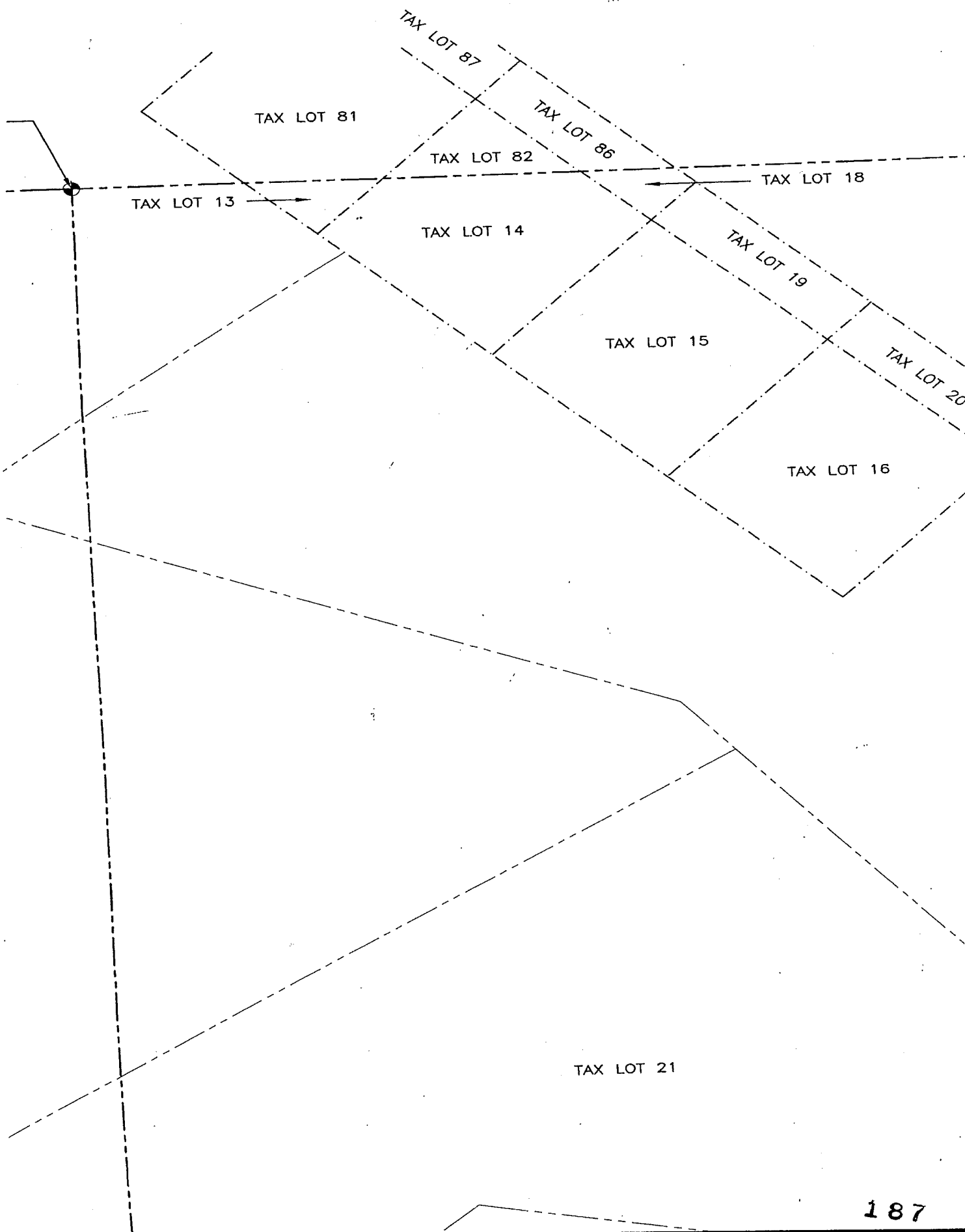
185

PART OF THE NE
1/4 OF NW 1/4

NORTH 1/4
CORNER OF
SECTION
23-17-12

S: 426.25'
BEARING: N71°21'34"W
DISTANCE: 214.82'
DISTANCE: 217.16'





LEGAL DESCRIPTION

PART OF THE NE 1/4 OF THE NW 1/4, TOGETHER WITH PART OF TAX LOTS 1 AND 21, ALL IN SECTION 23, T17N, R12E OF THE 6th P.M., WASHINGTON COUNTY, NEBRASKA, DESCRIBED AS FOLLOWS: COMMENCING AT THE NW CORNER OF SAID NE 1/2;

THENCE S00°14'57"E (ASSUMED BEARING) 478.17' FEET ON THE WEST LINE OF SAID NE 1/4;

THENCE N89°45'03"E 66.00 FEET TO THE POINT OF BEGINNING;

THENCE S56°24'09"E 418.56 FEET;

THENCE S85°58'51"E 378.81 FEET;

THENCE S56°19'22"E 148.44 FEET;

THENCE S18°42'00"E 249.97 FEET;

THENCE S32°01'02"E 278.94 FEET;

THENCE S41°31'08"E 140.84 FEET;

THENCE S50°54'39"E 403.42 FEET;

THENCE NORTHEASTERLY ON A NON-TANGENT 62.50 FOOT RADIUS CURVE TO THE LEFT, CHORD BEARING N39°01'50"E CHORD DISTANCE 66.00 FEET, AN ARC DISTANCE OF 323.17 FEET;

THENCE N50°54'39"W 397.93 FEET ON A NON-TANGENT LINE;

THENCE N41°31'08"W 129.93 FEET;

THENCE N32°01'02"W 265.75 FEET;

THENCE N18°42'00"W 264.75 FEET;

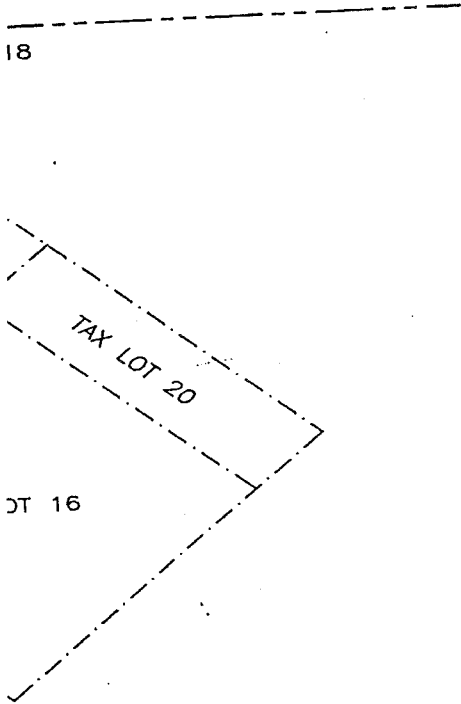
THENCE N56°19'22"W 255.62 FEET;

THENCE N85°57'17"W 197.15 FEET;

THENCE NORTHWESTERLY ON A 426.25 FOOT RADIUS CURVE TO THE RIGHT, CHORD BEARING N71°21'34"W, CHORD DISTANCE 214.82 FEET, AN ARC DISTANCE OF 217.16 FEET;

THENCE N56°45'52"W 350.23 FEET;

THENCE S00°14'57"E 118.25 FEET ON A LINE 66.00 FEET EAST OF AND PARALLEL WITH THE WEST LINE OF SAID NE 1/4 TO THE POINT OF BEGINNING.



COUNTY ROADS SUPERINTENDENT'S APPROVAL
THE ROAD EASEMENT AS SHOWN AND DESCRIBED HEREON WAS APPROVED BY THE WASHINGTON COUNTY ROAD SUPERINTENDENT ON THIS 27 DAY OF Aug, 1998.

Alan A. Roll
WASHINGTON COUNTY ROAD SUPERINTENDENT

COUNTY PLANNING COMMISSION APPROVAL
THE ROAD EASEMENT AS SHOWN AND DESCRIBED HEREON WAS APPROVED BY THE WASHINGTON COUNTY PLANNING COMMISSION THIS 15th DAY OF August, 1998.

David H. Hales
VICE-CHAIRMAN

COUNTY BOARD OF SUPERVISOR'S APPROVAL
THE ROAD EASEMENT AS SHOWN AND DESCRIBED HEREON WAS APPROVED BY THE WASHINGTON COUNTY BOARD OF SUPERVISORS