

NOTICE

METROPOLITAN UTILITIES DISTRICT

to

Job. No. GC-M 5137

WHOM IT MAY CONCERN:

Notice is hereby given that Metropolitan Utilities District has, under its construction order procedure, installed a gas main, in the following streets:

On Cedar Island Road between a point 306 feet south of Chandler Road and a point 993 feet south thereof,

Sarpy
in Omaha, ~~Douglas~~ County, Nebraska, or adjoining said city, abutting the lots or parcels of land described below:

Lots 1, 2, 12C, 12B, 1F and 1G, Martin's
Subdivision on Pleasant Hill

FILED FOR RECORD IN SARPY COUNTY NEBR. Oct 7 1963 AT 9 O'CLOCK A.M.

AND RECORDED IN BOOK 32 OF 175 PAGE 353 (Alicia Benken) REGISTER OF DEEDS

A connection charge of \$ 1.23 per foot will be made as to each of said lots or parcels of land whose owners apply for, and receive, service from such main. This charge is in lieu of an assessment which would have been made if said main had been installed under the statutory procedure for main extensions. The connection charge may be paid in full, or in installments, as provided by the Rules and Regulations of Metropolitan Utilities District.

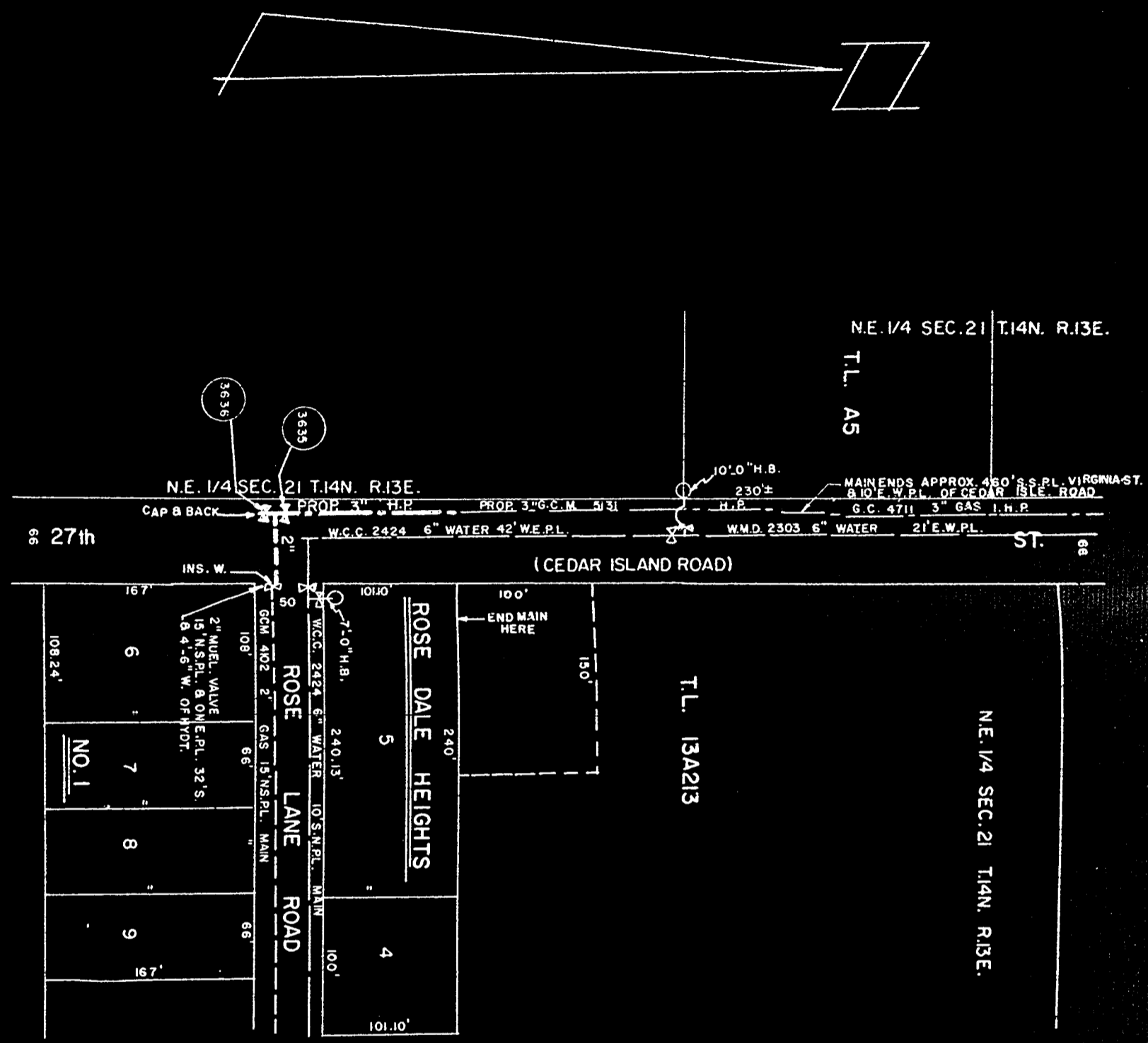
When the connection charge has been paid in full by the owner of a lot, a receipt will be issued and may be recorded by him. Inquiry may be made of the New "Services" Section of Metropolitan Utilities District as to whether a connection to said main has been made as to any one of the lots or parcels of land hereinabove described, and the amount of the connection charge remaining unpaid, if any.

Omaha, Nebraska, September 19, 19 63

METROPOLITAN UTILITIES DISTRICT

By R. Buchanan
Supervisor of Main Extensions

32-353 A



METROPOLITAN UTILITIES DISTRICT
OMAHA, NEBRASKA

JOB NO. **GC 5152**

BILL OF MATERIAL

QUAN.	DESCRIPTION
150'	3" WRAPPED STEEL GAS MAIN
60'	2" WRAPPED STEEL GAS MAIN
2	3" NORD. VALVES
1	3" x 2" WELDING TEE
2	C.C. BOXES W/LUB. EXT.
4	3" WELDING NECK FLANGES
1	2" STYLE 90 DRESSER INS. CPLG.
1	3" WELDING CAP
2	ROLLS 6" PROTECTO WRAP

BONDS, BOTHER DRESSER CPLGS.
AS REQ'D.

NOTE EXISTING I.H.P MAINS TO BE
CONVERTED TO H.P.

V4 SEC. PAGE 203-C FOREMAN'S PAGE 20-C

ENGINEERING DEPT. DATA

DRAWN BY K.E.S.		JOB ESTIMATE	
DATE	6-7-63	MATERIALS	300
SCALE	1" = 100'	PAVING	40
CHECKED BY	W.V.P.	MACH. & VEH.	90
REVISID BY		LABOR	148
DATE REVISED		OVERHEAD	71
REV. CHECKED BY		OTHER	16
CHECKED BY ENGR.	W.K.	TOTAL	665.00
REV. CHECKED BY ENGR.		EST. BY	O.H.A.
APPD. BY ENGR.		DATE	6-10-63

MAIN EXTENSION DIVISION

APPROVED FOR CONSTRUCTION
DATE BY