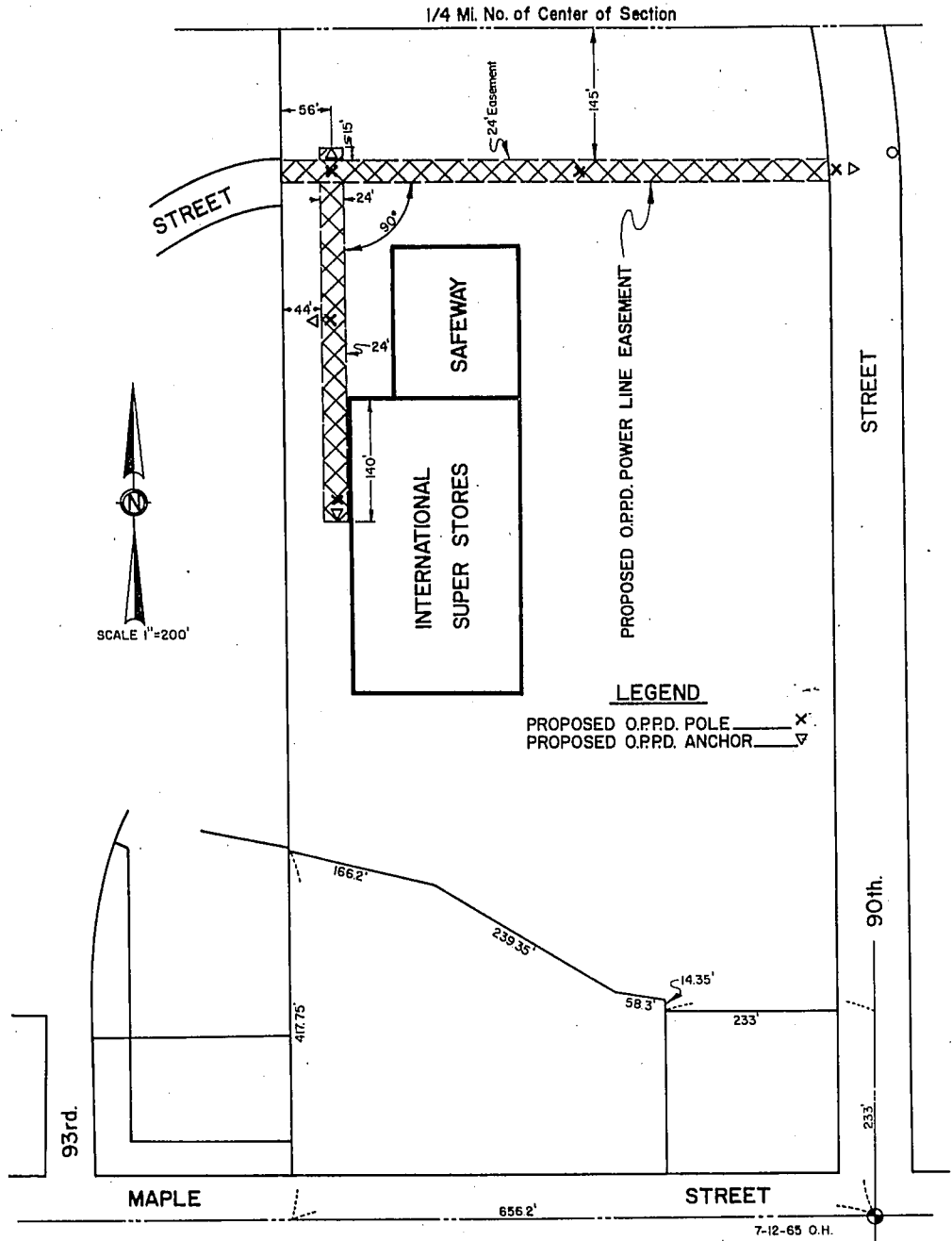




EXHIBIT "A"  
 PROPERTY PLAT SKETCH SHOWING  
 THE LOCATION AND SIZE OF  
 EASEMENT REQUESTED BY O.P.P.D.  
 FOR 3 Ø 13 K.V. PRIMARY LINE UPON  
 PROPERTY OWNED BY B.&L.  
 REALTY CO.



#11

ENTERED IN NUMERICAL INDEX AND RECORDED IN THE REGISTER OF DEEDS OFFICE IN DOWNS COUNTY, MISSOURI  
 9 DAY August 19 65 AT 10:39 A.M. THOMAS J. O'CONNOR, REGISTER OF DEEDS

325