

**PACIFIC HEIGHTS**  
 ALL OF BLOCKS 1 THRU 28, INCLUSIVE  
 A SUBDIVISION OF A PART OF THE NW 1/4 AND  
 THE W 1/2 OF THE NE 1/4 OF SECTION 27, T15N, R1E  
 OF THE 6TH PM. ALL IN DOUGLAS COUNTY, NEBRASKA

**SURVEYOR'S CERTIFICATE**

I HEREBY CERTIFY THAT I HAVE ACCURATELY SURVEYED AND STAKED WITH IRON PINS THE CORNERS OF ALL LOTS, BLOCKS, STREETS, AVENUES, DRIVES, COLLEGE-SAC, WIDE POINTS, PARKWAY, AND ENDS OF ALL CURVES IN THIS PLATTING OF PACIFIC HEIGHTS, BLOCKS 1 THRU 28 AND THAT SAID LAND IS A PLATTING OF THE NORTHWEST QUARTER (NW) AND THE WEST HALF (W) OF THE NORTH EAST QUARTER (NE) OF SECTION 27, TOWNSHIP 15 NORTH, RANGE 1 EAST OF THE SIXTH PRINCIPAL MERIDIAN ALL IN DOUGLAS COUNTY, NEBRASKA, PARTICULARLY DESCRIBED AND BOUNDED AS FOLLOWS:

BEGINNING AT A POINT WHICH IS THE NORTHWEST CORNER (NW) OF SAID SECTION 27-15-11; THENCE ON A BEARING OF N 80°00'00" E AND RUNNING A DISTANCE OF 2,337.77 FEET TO A POINT; THENCE ON A BEARING OF S 07°42'00" E AND RUNNING A DISTANCE OF 1,306.25 FEET TO A POINT; THENCE ON A BEARING OF S 89°53'50" W AND RUNNING A DISTANCE OF 1,306.25 FEET TO A POINT; THENCE ON A BEARING OF S 90°00'00" W AND RUNNING A DISTANCE OF 2,633.75 FEET TO A POINT; THENCE ON A BEARING OF S 07°00'00" E AND RUNNING A DISTANCE OF 2,647.97 FEET TO THE POINT OF BEGINNING.

EXCLUDING THEREFROM THE UNION PACIFIC RAILROAD RIGHT-OF-WAY

IN WITNESS WHEREOF I DO HERETO SET MY HAND AND SEAL AT OMAHA, NEBRASKA ON THIS 17<sup>TH</sup> DAY OF SEPTEMBER, A.D. 1961.

*James M. Naughton*  
 REGISTERED LAND SURVEYOR NO. 52  
 HENNINGSON, DUNHAM & RICHARDSON, INC.  
 ARCHITECTS-ENGINEERS

**DEDICATION**

KNOW ALL MEN BY THESE PRESENTS, THAT ALMA CAN DEVELOPMENT CORPORATION, A NEBRASKA CORPORATION, BEING SUE OWNER AND PROPRIETOR OF THE LAND DESCRIBED IN THE SURVEYORS CERTIFICATE AND ENBRACED WITHIN THIS PLAT HAVE CAUSED THE SAME TO BE SUBDIVIDED INTO LOTS, BLOCKS, STREETS, AVENUES, DRIVES, COLLEGE-SAC, WIDE POINTS, PARKWAY, AND SAID SUBDIVISION TO BE HEREAFTER KNOWN AS PACIFIC HEIGHTS, THE LOTS AND BLOCKS NUMBERED AS SHOWN, AND WE HEREBY RATIFY AND APPROVE OF THE DISPOSITION OF OUR PROPERTY AS SHOWN, AND WE HEREBY DEDICATE TO THE PUBLIC FOR PUBLIC USE THE STREETS, AVENUES, DRIVES, COLLEGE-SAC AND DRIVEWAYS AS SHOWN.

IN WITNESS WHEREOF WE DO HERETO SET OUR HANDS AND CORPORATE SEAL THIS 16<sup>TH</sup> DAY OF DECEMBER, A.D. 1961

*Bill Peterson*  
 BILL PETERSON  
 SECRETARY

*John Peterson*  
 JOHN PETERSON  
 PRESIDENT

**ACKNOWLEDGEMENT**

STATE OF NEBRASKA SS  
 COUNTY OF DOUGLAS

ON THIS 16 DAY OF DECEMBER, A.D. 1961, BEFORE ME A NOTARY PUBLIC, DULY COMMISSIONED AND QUALIFIED IN AND FOR SAID COUNTY, CAME BILL PETERSON AND JOHN PETERSON WHO ARE PERSONALLY KNOWN BY ME TO BE THE SAME AND IDENTICAL PERSONS WHOSE NAMES ARE AFFIXED TO THE ABOVE DEDICATION, AS PRESIDENT AND SECRETARY OF ALMA CAN DEVELOPMENT CORPORATION, AND THEY ACKNOWLEDGE THE SIGNING OF SAID DEDICATION TO BE THEIR VOLUNTARY ACTS AND DEEDS AND THE VOLUNTARY ACT AND DEED OF SAID CORPORATION.

IN WITNESS MY HAND AND SEAL AT OMAHA, NEBRASKA IN SAID COUNTY, THE DATE LAST FORESAID.

*John D. Smalley*  
 NOTARY PUBLIC

MY COMMISSION EXPIRES ON THE 16 DAY OF DECEMBER, 1965.

**MORTGAGE RELEASE**

KNOW ALL MEN BY THESE PRESENTS THAT ALMA CAN DEVELOPMENT CORPORATION, A NEBRASKA CORPORATION, BEING SUE OWNER AND PROPRIETOR OF THE LAND DESCRIBED IN THE SURVEYORS CERTIFICATE AND ENBRACED WITHIN THIS PLAT HAVE CAUSED THE SAME TO BE RECORDED IN BOOK 222, PAGE 222 OF THE MORTGAGE RECORDS OF DOUGLAS COUNTY, NEBRASKA, HEREBY RATIFY AND APPROVE OF THE DISPOSITION OF THE LAND AS SHOWN ON THIS PLAT OF PACIFIC HEIGHTS AND DOES HEREBY RELEASE SAID MORTGAGE ON THE LAND COVERED BY AND ENBRACED WITHIN THE STREETS, AVENUES, DRIVES, COLLEGE-SAC AND THE PARKWAY SHOWN, AS DEDICATED TO THE PUBLIC FOR PUBLIC USE WITHOUT PREJUDICE TO THE LIEN OF THE MORTGAGE ON THE BALANCE OF THE LAND AS DESCRIBED IN SAID MORTGAGE.

IN WITNESS WHEREOF I DO HERETO SET MY HAND THIS 30 DAY OF DECEMBER, A.D. 1961.

*Alma Williams*  
 ALMA WILLIAMS

**ACKNOWLEDGEMENT**

STATE OF NEBRASKA SS  
 COUNTY OF DOUGLAS

ON THIS 30 DAY OF DECEMBER, A.D. 1961, BEFORE ME A NOTARY PUBLIC DULY COMMISSIONED AND QUALIFIED IN AND FOR SAID COUNTY CAME ALMA WILLIAMS, A WIDOW, WHO IS PERSONALLY KNOWN BY ME TO BE THE SAME AND IDENTICAL PERSON WHOSE NAME IS AFFIXED TO THE ABOVE MORTGAGE RELEASE AS MORTGAGEE AND SHE ACKNOWLEDGES THE SIGNING OF SAID RELEASE TO BE HER VOLUNTARY ACT AND DEED.

IN WITNESS MY HAND AND OFFICIAL SEAL AT OMAHA, NEBRASKA IN SAID COUNTY THE DATE LAST FORESAID.

*John D. Smalley*  
 NOTARY PUBLIC

**COUNTY TREASURER'S CERTIFICATE**

THIS IS TO CERTIFY THAT I FIND NO REGULAR OR SPECIAL TAXES DUE OR DELINQUENT AGAINST THE PROPERTY DESCRIBED IN THE SURVEYORS CERTIFICATE AND ENBRACED WITHIN THIS PLAT AS SHOWN BY THE RECORDS OF THIS OFFICE.

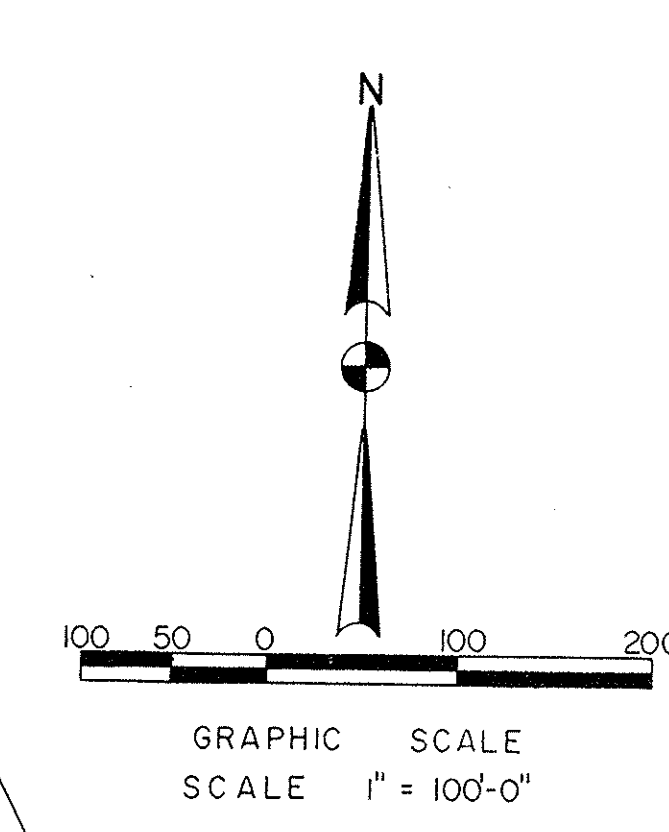
DATE: 12/16/61

*John D. Smalley*  
 COUNTY TREASURER  
 DOUGLAS COUNTY

**APPROVAL OF COUNTY BOARD OF COMMISSIONERS**

THIS PLATTING OF PACIFIC HEIGHTS IS APPROVED BY THE COUNTY BOARD OF COMMISSIONERS OF THE COUNTY OF DOUGLAS, STATE OF NEBRASKA THIS 16 DAY OF DECEMBER, A.D. 1961.

RALPH G. HEFFLINGER  
 LEGAIRD SEIGMAN  
 JOHN J. CAVANAUGH  
 GUS A. LARAK  
 DANIEL C. LYNCH



**- C CURVE DATA -**

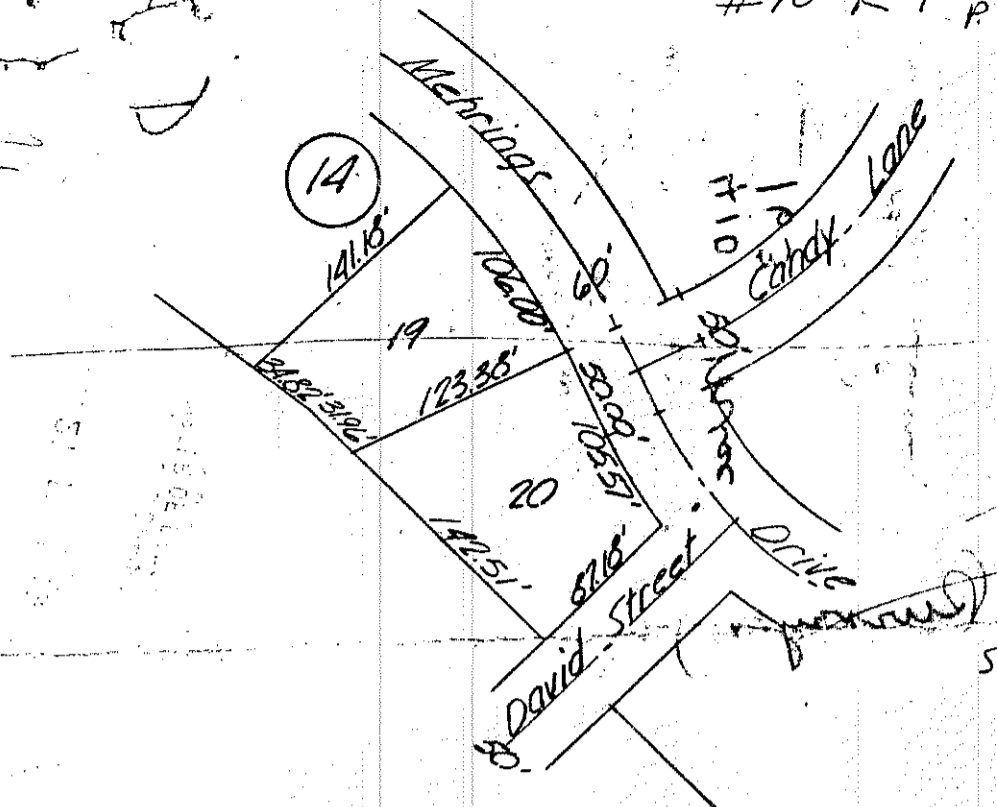
CURVE NO.	BEARING	DISTANCE	CHORD BEARING	CHORD DISTANCE	ARC DISTANCE
CURVE NO. 1	A 25°52'52"	64.74	T 64.74	64.74	64.74
CURVE NO. 2	A 25°52'52"	64.74	T 64.74	64.74	64.74
CURVE NO. 3	A 25°52'52"	64.74	T 64.74	64.74	64.74
CURVE NO. 4	A 25°52'52"	64.74	T 64.74	64.74	64.74
CURVE NO. 5	A 25°52'52"	64.74	T 64.74	64.74	64.74
CURVE NO. 6	A 25°52'52"	64.74	T 64.74	64.74	64.74
CURVE NO. 7	A 25°52'52"	64.74	T 64.74	64.74	64.74
CURVE NO. 8	A 25°52'52"	64.74	T 64.74	64.74	64.74
CURVE NO. 9	A 25°52'52"	64.74	T 64.74	64.74	64.74
CURVE NO. 10	A 25°52'52"	64.74	T 64.74	64.74	64.74
CURVE NO. 11	A 25°52'52"	64.74	T 64.74	64.74	64.74
CURVE NO. 12	A 25°52'52"	64.74	T 64.74	64.74	64.74
CURVE NO. 13	A 25°52'52"	64.74	T 64.74	64.74	64.74
CURVE NO. 14	A 25°52'52"	64.74	T 64.74	64.74	64.74
CURVE NO. 15	A 25°52'52"	64.74	T 64.74	64.74	64.74
CURVE NO. 16	A 25°52'52"	64.74	T 64.74	64.74	64.74
CURVE NO. 17	A 25°52'52"	64.74	T 64.74	64.74	64.74
CURVE NO. 18	A 25°52'52"	64.74	T 64.74	64.74	64.74
CURVE NO. 19	A 25°52'52"	64.74	T 64.74	64.74	64.74
CURVE NO. 20	A 25°52'52"	64.74	T 64.74	64.74	64.74
CURVE NO. 21	A 25°52'52"	64.74	T 64.74	64.74	64.74
CURVE NO. 22	A 25°52'52"	64.74	T 64.74	64.74	64.74
CURVE NO. 23	A 25°52'52"	64.74	T 64.74	64.74	64.74
CURVE NO. 24	A 25°52'52"	64.74	T 64.74	64.74	64.74
CURVE NO. 25	A 25°52'52"	64.74	T 64.74	64.74	64.74

K-7-10



#10 K-T P1

BOOK 410 PAGE 103



**AFFIDAVIT OF CORRECTION**

Lot 20, Block 14, Pacific Heights, an Addition in Douglas County, Nebraska, as surveyed, platted, recorded and corrected as shown.

The Southwest property line of Lot 20, Block 14, to be corrected to read one hundred forty two and fifty one hundredths feet (142.51') instead of one hundred seventy four and forty seven hundredths feet (174.47').

**AFFIDAVIT**

Corrections to the plat of Pacific Heights, a Subdivision of a part of the Northwest Quarter (NW 1/4) and the West Half (W 1/2) of the Northeast Quarter (NE 1/4) of Section 27, Township 15 North, Range 11 East of the 6th Principle Meridian, all in Douglas County, Nebraska.

I, Francis J. Naughtin, do hereby submit the above shown drawing in order to correct certain typographical and drafting errors in the dimensions of Lot 20, Block 14, in the plat of Pacific Heights as recorded in Book 1126, Page 654 of the records in the Registrar of Deeds Office, Douglas County, Nebraska.

I certify that I am the same and identical person whose name appears in the Surveyor's Certificate of said plat of Pacific Heights.

Omaha, Nebraska March 18, A. D. 1964

*Francis J. Naughtin*  
 Registered Land Surveyor No. 78  
 Henningson, Durham & Richardson  
 Consulting Engineers 54-517

STATE OF NEBRASKA )  
COUNTY OF DOUGLAS ) SS

On this 23rd day of March, A. D. 1964, before me a Notary Public duly qualified and commissioned in and for said county personally appeared Francis J. Naughtin, who is personally known by me to be the same and identical person whose name is affixed to the above Affidavit of Correction and he acknowledged the signing thereof to be his voluntary and deed.

Witness my hand and official seal at Omaha, Nebraska, on the date last aforesaid,

My commission expires on the 29th day of January A. D. 1965

*Notary M. [Signature]*  
 Notary Public

BOOK 410 PAGE 103