

NORTH PARK REPLAT I

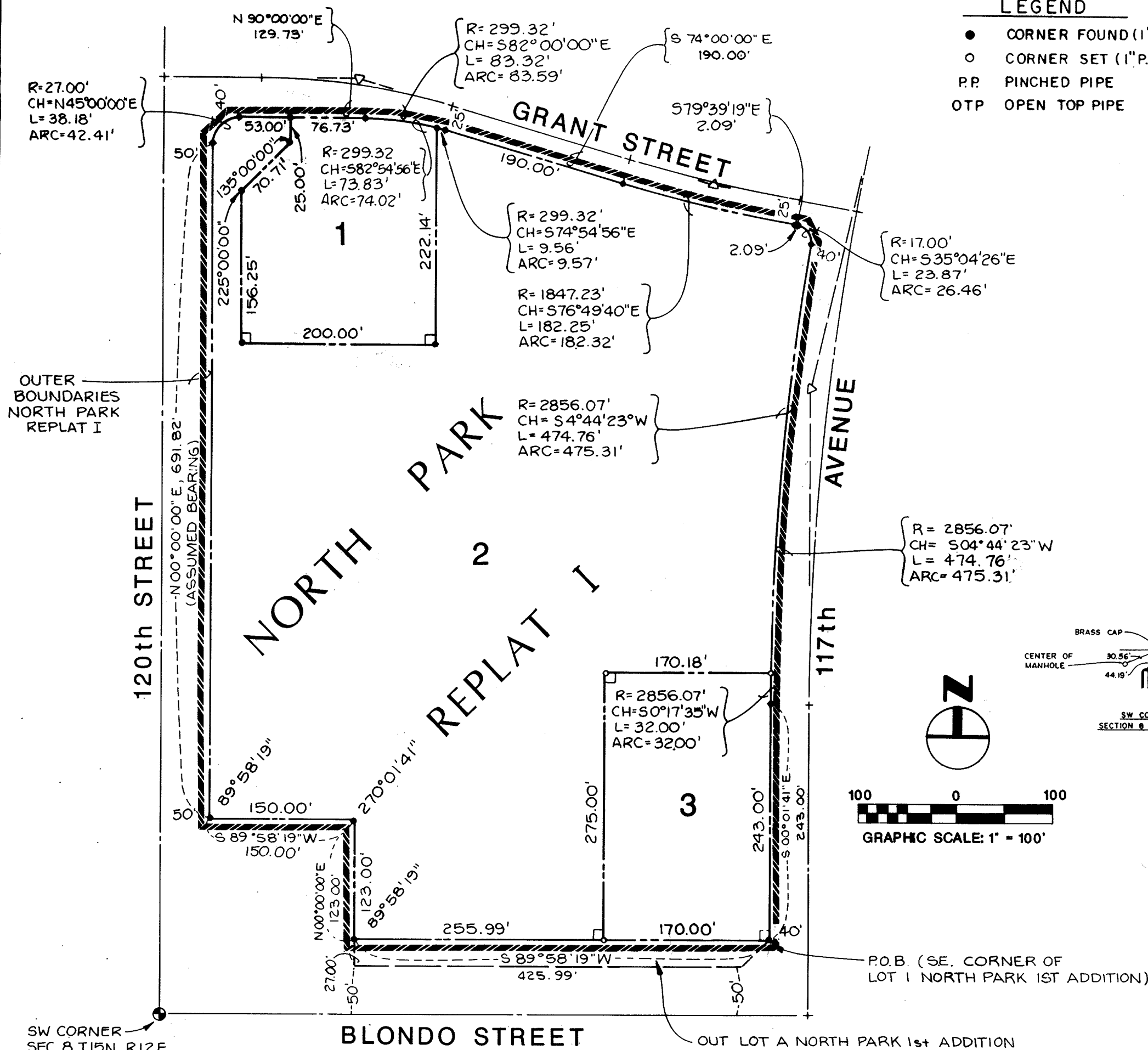
LOTS 1 THRU 3 INCLUSIVE
A REPLAT OF LOT 1, NORTH PARK 1ST ADDITION

A SUBDIVISION LOCATED IN PART OF THE W 1/2 OF THE
SW 1/4 OF SECTION 8, TOWNSHIP 15 NORTH, RANGE 12 EAST
DOUGLAS COUNTY, NEBRASKA

1987

LEGEND

- CORNER FOUND (1" PP)
- CORNER SET (1" P.P.)
- P.P. PINCHED PIPE
- OTP OPEN TOP PIPE



SURVEYOR'S CERTIFICATE

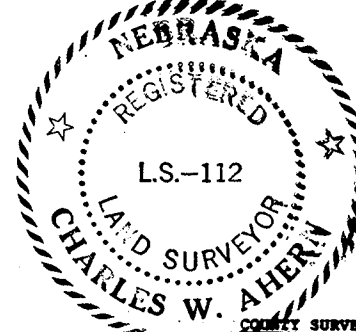
I, Charles W. Ahern, a registered Land Surveyor in the State of Nebraska, do hereby certify that I have surveyed the outer boundaries of this plat of NORTH PARK REPLAT I and I have installed permanent iron pins (1-inch x 24-inch pinched pipe) at the corners of all lots, streets, angle points, and the terminal points of all curves as shown on this plat of NORTH PARK REPLAT I, and the limits and boundaries of said subdivision are as follows:

A replat of lot 1, NORTH PARK 1st ADDITION, a subdivision as platted and recorded in Douglas County, Nebraska, located in part of the W 1/2 of the SW 1/4 of Section 8, Township 15 North, Range 12 East, Douglas County, Nebraska, more particularly described as follows:

Beginning at the Southeast corner of said Lot 1 North Park 1st Addition; thence S89°58'19\"

Dated this 18th day of September, 1987.

Charles W. Ahern
Registered Land Surveyor LS 112



COUNTY SURVEYOR'S CERTIFICATE

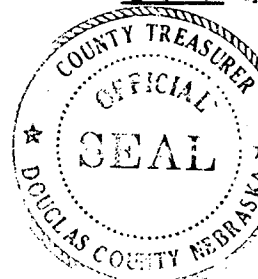
This plat of NORTH PARK REPLAT I, was reviewed by the Douglas County Surveyor's Office on this 17th day of November, 1987, A.D.



COUNTY TREASURER'S CERTIFICATE

This is to certify that I find no regular or special taxes due or delinquent against the property described in the Surveyor's Certificate, and embraced in the plat as shown by the record of this office.

Dated this 13th day of Nov., 1987, A.D.



APPROVALS OF CITY ENGINEER OF OMAHA

I hereby approve this plat of NORTH PARK, REPLAT I, as to the Design Standards this 16th day of November, 1987, A.D.

Ray A. Schumann
City Engineer

I hereby certify that adequate provisions have been made for compliance with Chapter 21 of the Omaha Municipal Code this 17th day of April, 1988, A.D.

Sam J. Hysell
City Engineer

APPROVAL OF THE CITY PLANNING BOARD

This plat of NORTH PARK, REPLAT I, was approved by the City Planning Board of the City of Omaha this 14th day of October, 1987, A.D.

Michael D. Daly
Chairman

OMAHA CITY COUNCIL ACCEPTANCE

This plat of NORTH PARK REPLAT I, was approved by the City Council of Omaha this 23rd day of November, 1987, A.D.

Bernie Lamm
Mayor

City Council President



PREPARED BY
KIRKHAM MICHAEL & ASSOCIATES

KMA NO. B860634

* SEE AFFIDAVIT FILE
E3 # 50 (202)

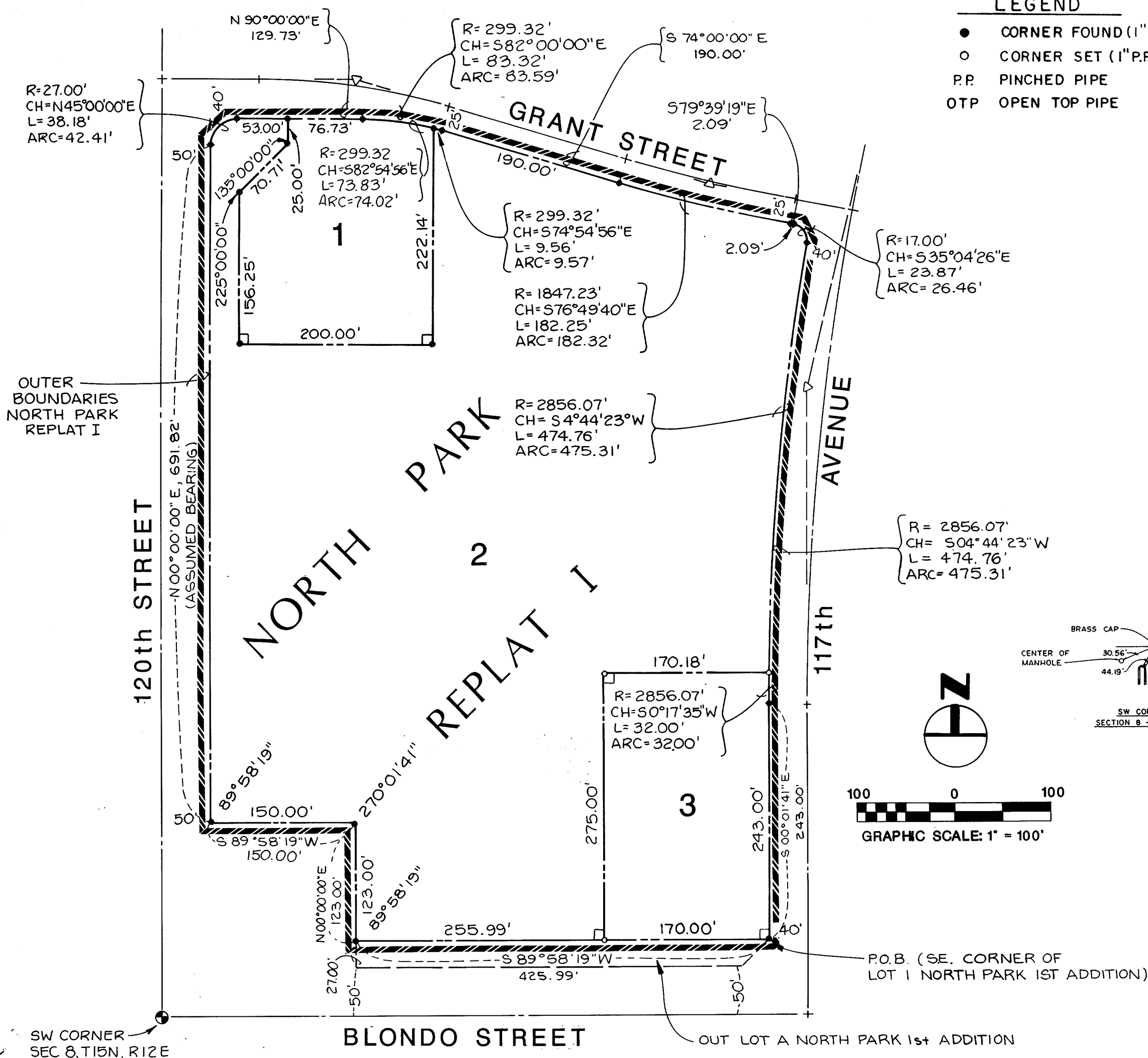
NORTH PARK REPLAT I

LOTS 1 THRU 3 INCLUSIVE

A REPLAT OF LOT 1, NORTH PARK 1ST ADDITION

A SUBDIVISION LOCATED IN PART OF THE W 1/2 OF THE
SW 1/4 OF SECTION 8, TOWNSHIP 15 NORTH, RANGE 12 EAST
DOUGLAS COUNTY, NEBRASKA

1987



LEGEND

- CORNER FOUND (1" P.P.)
- CORNER SET (1" P.P.)
- P.P. PINCHED PIPE
- OTP OPEN TOP PIPE

SURVEYOR'S CERTIFICATE

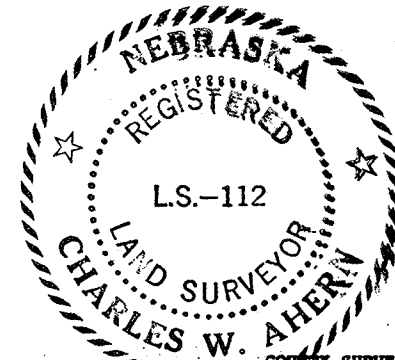
I, Charles W. Ahern, a registered Land Surveyor in the State of Nebraska, do hereby certify that I have surveyed the outer boundaries of this plat of NORTH PARK REPLAT I and I have inserted permanent iron pins (1-inch x 24-inch pinched pipe) at the corners of all lots, the angle points, and the terminal points of all curves as shown on this plat of NORTH PARK REPLAT I, and the limits and boundaries of said subdivision are as follows:

A replat of lot 1, NORTH PARK 1st ADDITION, a subdivision as platted and recorded in Douglas County, Nebraska, located in part of the W 1/2 of the SW 1/4 of Section 8, Township 15 North, Range 12 East, Douglas County, Nebraska, more particularly described as follows:

beginning at the Southeast corner of said Lot 1 North Park lot Addition; thence 889°59'19" along the said ROW line a distance of 425.99 feet to a point; thence 000°00'00" a distance of 123.00 feet to a point; thence 889°58'19" a distance of 150.00 feet to a point; thence 000°00'00" along said ROW line a distance of 91.82 feet to a point of curvature; thence Northeasterly on a curve to the left, having a radius of 1,847.23 feet, an arc distance of 12.37 feet, a bearing N45°00'00"E and a chord length of 38.18 feet, an arc distance of 42.41 feet to a point of tangency, said point being on the said ROW line; thence along said ROW line a distance of 129.73 feet to a point of curvature; thence Southeasterly on a curve to the right, said curve having a radius of 1,847.23 feet, an arc distance of 12.37 feet, an arc distance of 82°00'00"E and a chord length of 83.32 feet, an arc distance of 83.59 feet to a point; thence 374°00'00"E a distance of 190.00 feet to a point; thence 182°00'00"E a distance of 190.00 feet to the left, said curve having a radius of 1,847.23 feet, with a chord bearing S76°49'40"E and a chord length of 182.25 feet, an arc distance of 182.25 feet to a point; thence 379°39'19"E a distance of 2.09 feet to a point of curvature; thence Southeasterly on a curve to the right, said curve having a radius of 1,847.23 feet, an arc distance of 22.87 feet, a chord length of 23.87 feet, an arc distance of 26.46 feet to a point of reverse curvature, said point also being on the westerly ROW line; thence along said ROW line a distance of 2,856.07 feet to a curve to the left, said curve having a radius of 2,856.07 feet with a chord bearing S04°44'23"W and a chord length of 474.76 feet, an arc distance of 474.76 feet to a point of tangency; thence S00°01'41"E a distance of 243.00 feet to the point of beginning, said parcel of land containing 10.40 acres more or less.

Dated this 18th day of September, 1987.

Charles W. Ahern
Charles W. Ahern
Registered Land Surveyor LS 112



COUNTY SURVEYOR'S CERTIFICATE

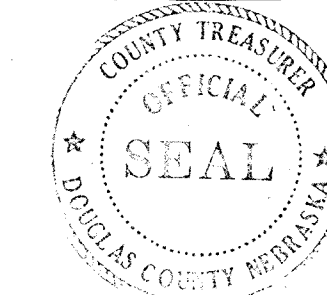
This plat of NORTH PARK REPLAT I, was reviewed by the Douglas County Surveyor's Office on this 6th day of NOVEMBER 1987, A.D.



COUNTY TREASURERS CERTIFICATE

This is to certify that I find no regular or special taxes due of delinquent against the property described in the Surveyor's Certificate and embraced in the plat as shown by the record of this office.

Dated this 13th day of Nov., 1987, A.D.



APPROVALS OF CITY ENGINEER OF OMAHA

I hereby approve this plat of NORTH PARK, REPEAT I, as to the Design Standards this 10th day of November 1987, A.D.

Russ L. Heumann
City Engineer

I hereby certify that adequate provisions have been made for compliance with Chapter 52 of the Omaha Municipal Code this day of Dec 1, 1988 A.D.

Randy L. Beaman
City Engineer

APPROVAL OF THE CITY PLANNING BOARD

This plat of NORTH PARK, REPLAT I, was approved by the City Planning Board of the City of Omaha this 14th day of October, 1987, A.D.

Michael D. Jolley
Chairman

OMAHA CITY COUNCIL ACCEPTANCE

This plat of NORTH PARK REPLAT I, was approved and accepted by the City Council of Omaha this 23rd day of February, 1987 A.D.

Bernie Sempie Mayor

City Council President

100-443887-100

PREPARED BY

KIRKHAM MICHAEL & ASSOCIATES

KMA NO. B860634

KIRKHAM MICHAEL & ASSOCIATES

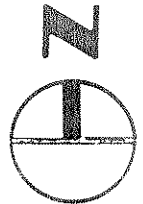
KMA NO. B860634

AFFIDAVIT

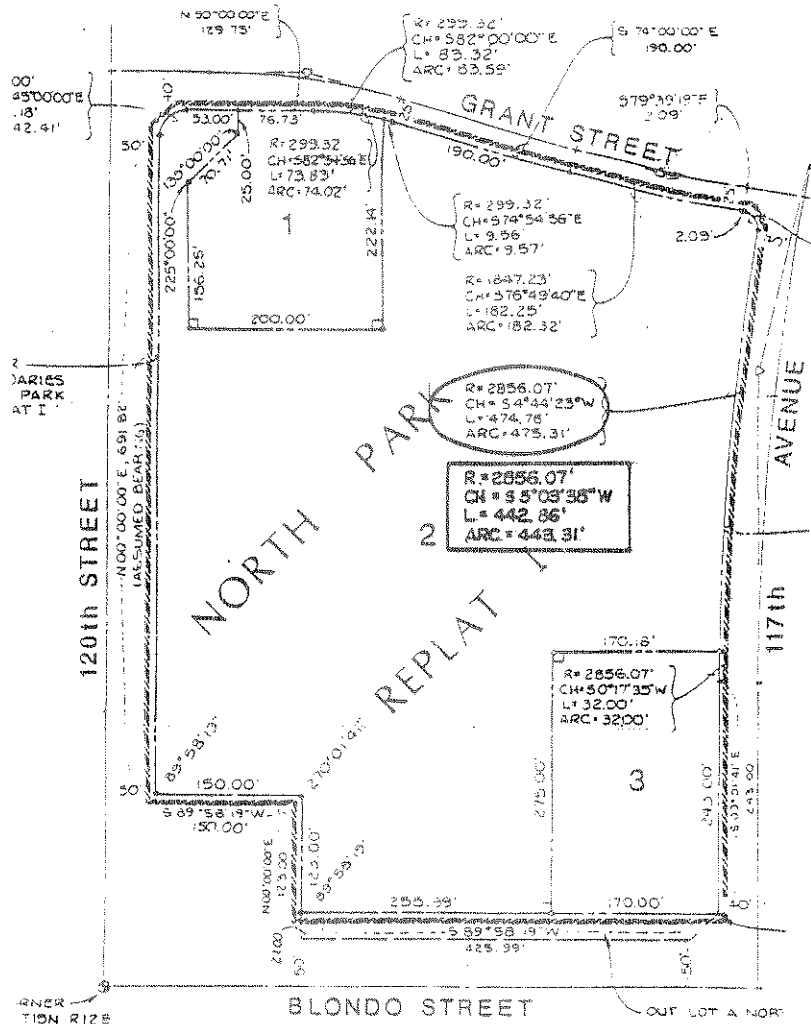
NORTH PARK REPLAT I

This is a correction to lot 2 of said North Park Replat I.

RECEIVED
1988 MAY 13 PM 12:36
GEORGE J. J. J. J.
REGISTERED
DOUGLAS COUNTY, NEBR.



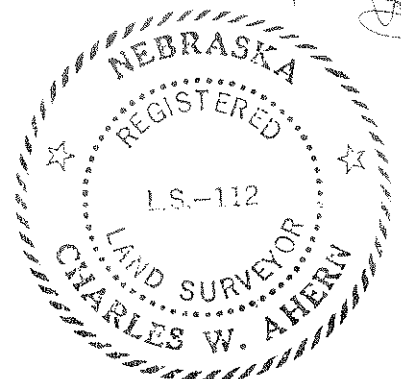
SCALE: 1" = 200'



LEGEND



INFORMATION TO BE CORRECTED
CORRECTED INFORMATION



This is to certify that the distance encircled on this plat was shown in error on the original platting of North Park Replat I and I further certify that the distance enclosed within a rectangle as shown on this plat is true, correct, and the originally intended distance.

May 11, 1988
DATE

Charles W. Ahern
CHARLES W. AHERN L.S. 112

PLATE 1/1	DATE 5-12-88 K.M.A. NO. 8860634	TITLE CORRECTION PLAT PROJECT NORTH PARK REPLAT I
--------------	--	--



KIRKHAM, MICHAEL AND ASSOCIATES
ARCHITECTS
ENGINEERS
PLANNERS