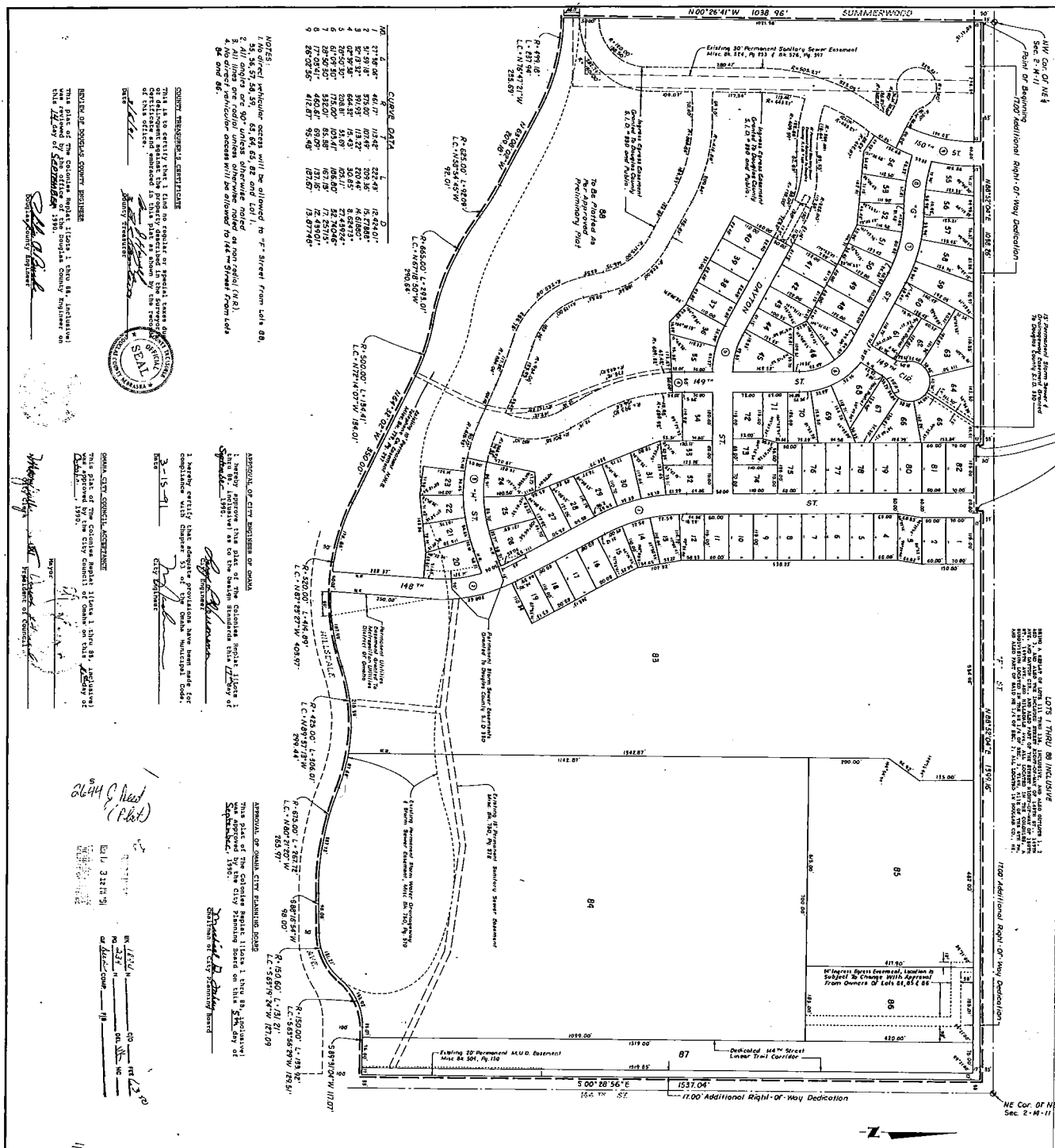


THE COLONIES REPLAT I

SEC. 1304 W. 239



**NOTES:**

1. No object whatever exists will be allowed to be placed on the lot from which this plat is being prepared.
2. All angles are 90° unless otherwise noted.
3. All lines are radial unless otherwise noted or non radial (N.R.).
4. All bearings are true unless otherwise noted or magnetic (MAG.).
5. All bearings are true unless otherwise noted or magnetic (MAG.).
6. All bearings are true unless otherwise noted or magnetic (MAG.).
7. All bearings are true unless otherwise noted or magnetic (MAG.).
8. All bearings are true unless otherwise noted or magnetic (MAG.).
9. All bearings are true unless otherwise noted or magnetic (MAG.).
10. All bearings are true unless otherwise noted or magnetic (MAG.).

**COUNTY TREASURER'S CERTIFICATE**

This is to certify that I find no regular or special taxes due or payable against the property described in the foregoing plat of the County of Douglas, Nebraska, and that the same are duly paid.

**APPROVAL OF CITY ENGINEER OR BOARD**

I hereby approve this plat of the Colonies Replat I, Sec. 1304 W. 239, as shown on the attached plat, and as the same complies with the provisions of the City Ordinance No. 1304, as amended.

**APPROVAL OF COUNTY ENGINEER**

I hereby certify that the foregoing plat of the Colonies Replat I, Sec. 1304 W. 239, as shown on the attached plat, complies with the provisions of the County Ordinance No. 1304, as amended.

**RECORDING OFFICER'S CERTIFICATE**

This plat of the Colonies Replat I, Sec. 1304 W. 239, as shown on the attached plat, has been recorded in the office of the Recorder of Deeds for the County of Douglas, Nebraska, on this 14th day of September, 1990.