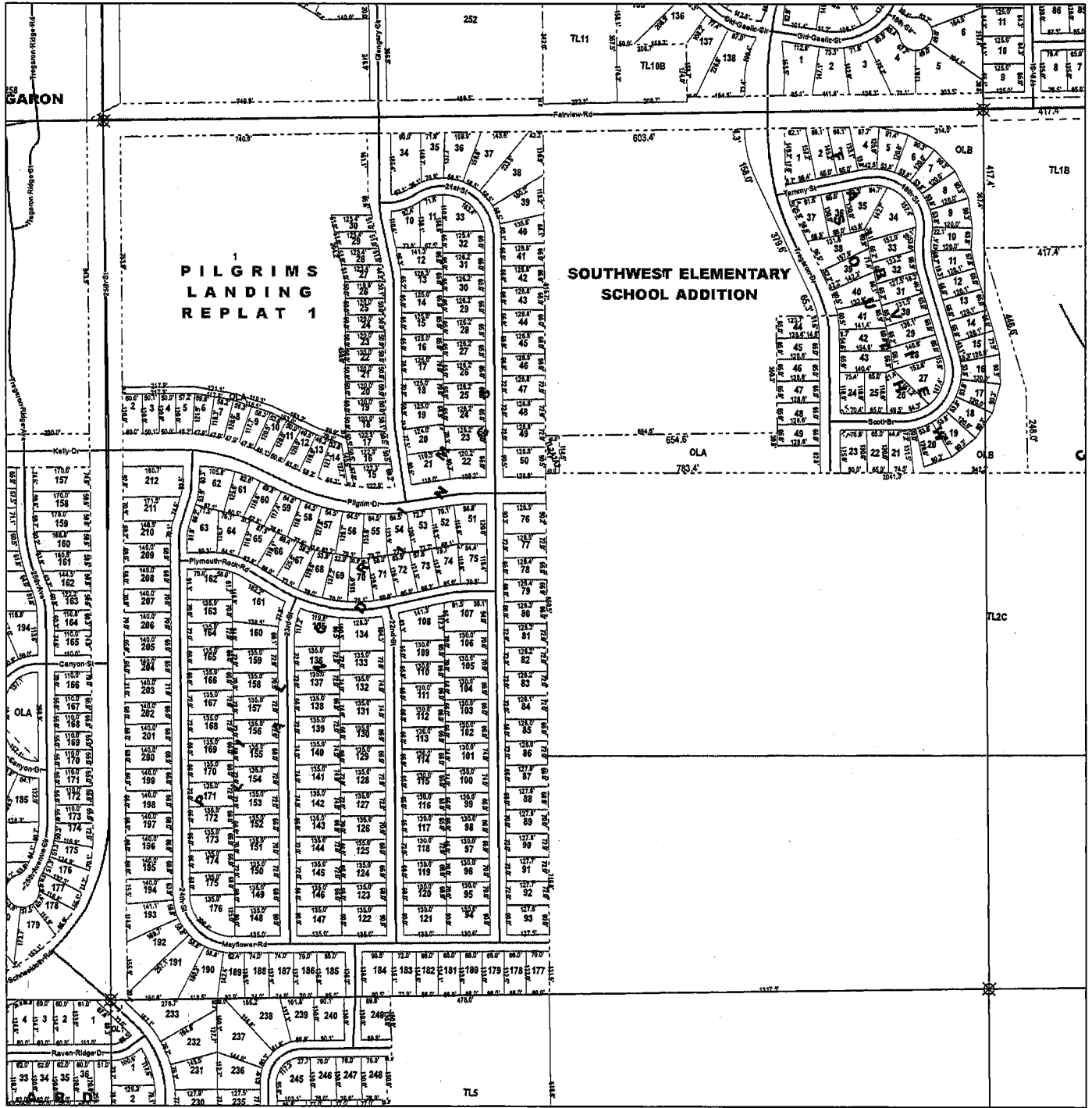


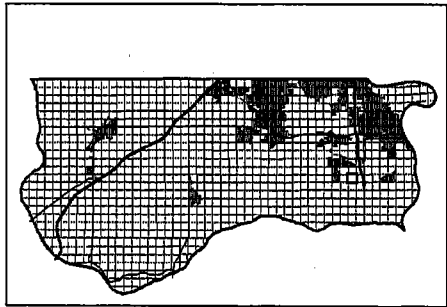


# NW1/4 SEC 15 T13N R13E

1 inch = 200 feet



SARPY COUNTY  
SURVEYOR'S OFFICE



**Legend**

- ⊠ Corners
- Quarter Sections
- Subdivisions
- - - Rights of Way
- Lots
- Blocks
- Railroads
- ~ Street Centerline

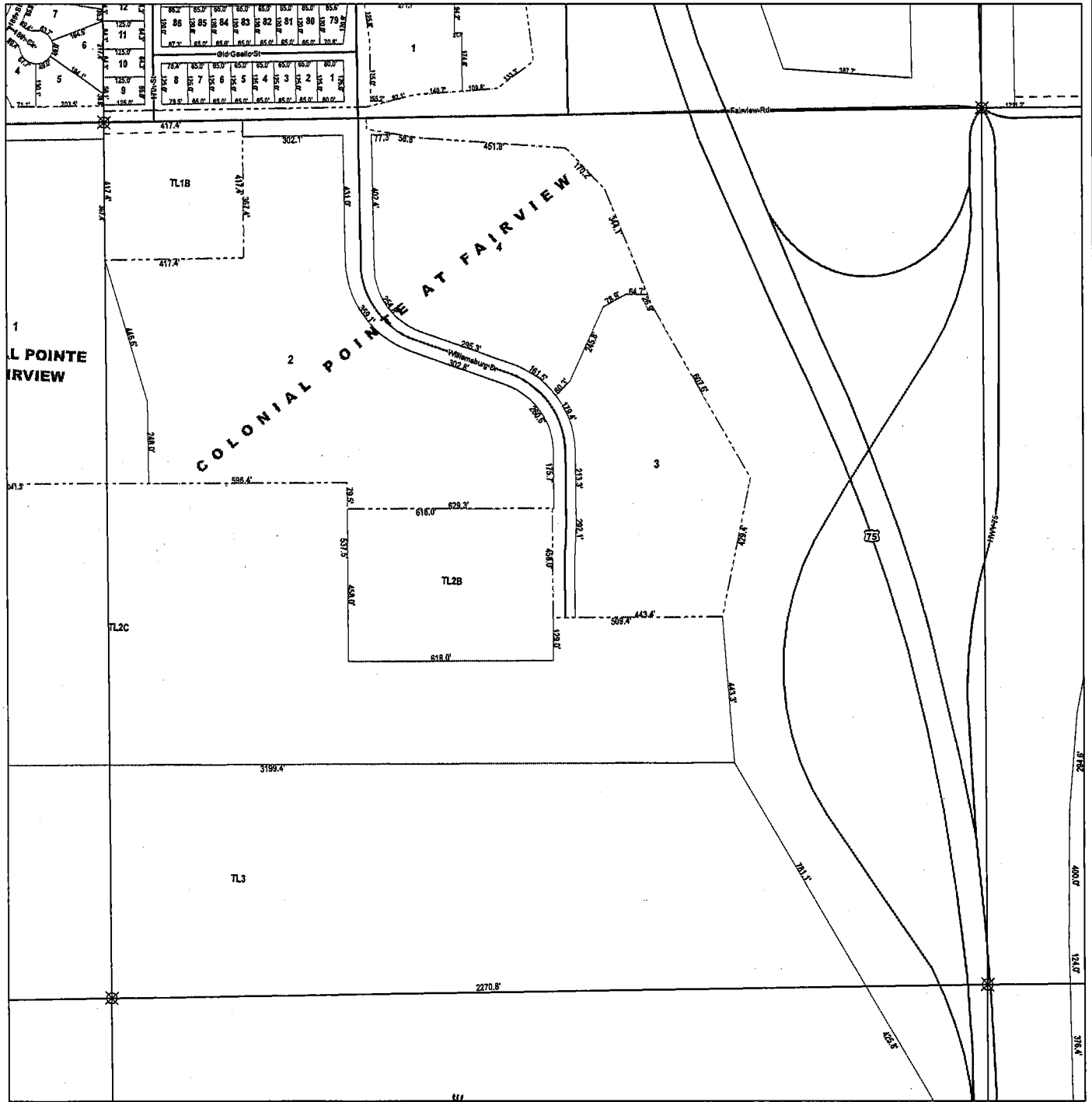
**NOTICE**

This map constitutes a representation based on information provided to the Sarpy County Surveyors Office by other individuals and organizations. Therefore no representations regarding the accuracy of the size, dimensions, measurements, condition, platting, or location of the within described area are made. Should such information be required for construction, zoning, or other purposes, the services of a private surveyor and/or title search should be secured.

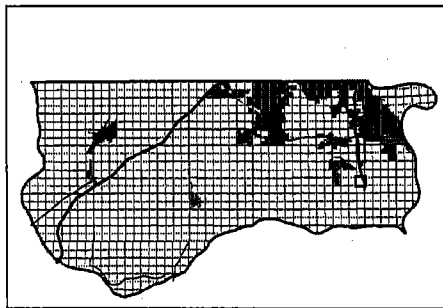
This Map Was Printed On:  
3/25/2010

# NE1/4 SEC 15 T13N R13E

1 inch = 200 feet



SARPY COUNTY  
SURVEYOR'S OFFICE



### Legend

- ⊗ Corners
- ▭ Quarter Sections
- - - Subdivisions
- - - Rights of Way
- ▭ Lots
- ▭ Blocks
- Railroads
- ~ Street Centerline

### NOTICE

This map constitutes a representation based on information provided to the Sarpy County Surveyors Office by other individuals and organizations. Therefore no representations regarding the accuracy of the size, dimensions, measurements, condition, platting, or location of the within described area are made. Should such information be required for construction, zoning, or other purposes, the services of a private surveyor and/or title search should be secured.

This Map Was Printed On:  
6/23/2009