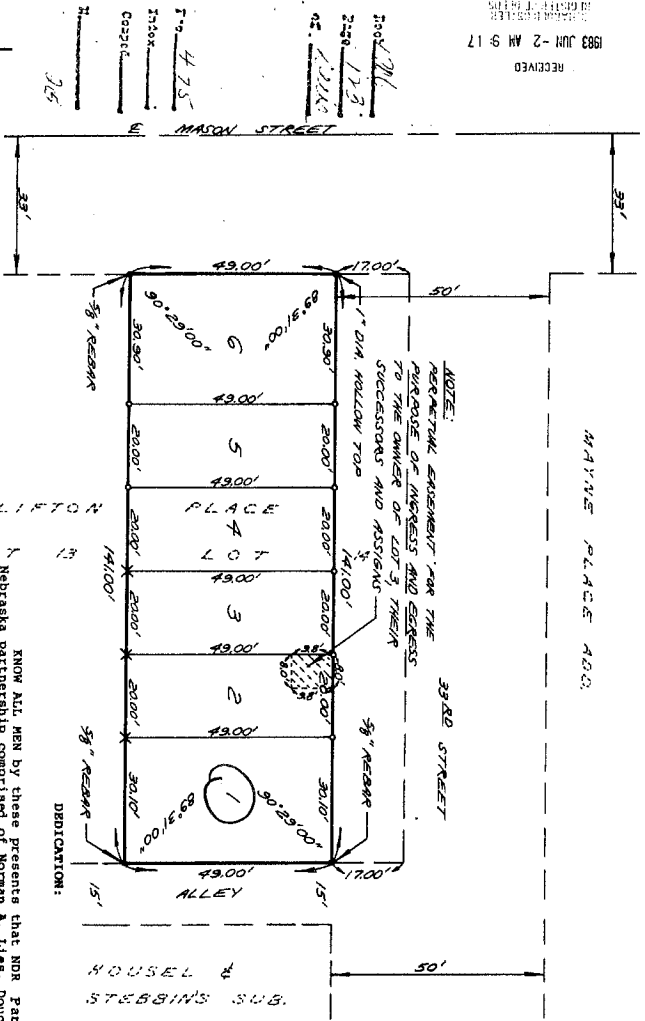


CLIFTON PLACE TOWNHOMES

LEGEND
 • FOUND IRON PIN
 X SET 1" DIA MACH TOP IRON PIN MADE CHOICE 1" DIA TOP OF CIVIC BLOCK REMAINING WALL

(LOTS 1 THRU 6 INCLUSIVE) BEING A RESULT OF LOT 19 EXCEPT THE WEST 1700 FEET THEREOF, CLIFTON PLACE, A SUBDIVISION OF LOT 13, BARRETT'S, IN ADDITION TO THE CITY OF OMAHA AS SURVEYED, PLATTED AND RECORDED IN DOUGLAS COUNTY, NEBRASKA.



RECEIVED
 1983 JUN - 2 AM 9-17

Surveyor's Certificate
 I hereby certify that I have made a ground survey of the subdivision described herein and that monuments have been placed as shown on this plat and all lots in Clifton Place Townhomes (Lots 1 thru 6 inclusive) being a replat of lots 1 thru 6, Clifton Place, a subdivision of lot 13, Barrett's, an addition to the City of Omaha, as surveyed, platted and recorded in Douglas County, Nebraska.
 Carl H. Rogers, Jr.
 L.S.
 Nebraska Reg. No. 329
 FEB 1 1983

APPROVAL OF OMAHA CITY PLANNING BOARD
 This plat of Clifton Place Townhomes (Lots 1 thru 6 inclusive) was approved by the City Planning Board on this 27 day of FEBRUARY, 1983.
 Chairman of City Planning Board

OMAHA CITY COUNCIL ACCEPTANCE
 This plat of Clifton Place Townhomes (Lots 1 thru 6 inclusive) was approved by the City Council of Omaha on this 27 day of FEBRUARY, 1983.
 Mayor
 President of Council

APPROVAL OF DOUGLAS COUNTY SURVEYOR
 This plat of Clifton Place Townhomes (Lots 1 thru 6 inclusive) was approved by the Office of the Douglas County Surveyor on this 27 day of FEBRUARY, 1983.
 Douglas County Surveyor

COUNTY TREASURER'S CERTIFICATE
 This is to certify that I find no regular or special taxes due or delinquent against the property described in the Surveyor's Certificate and embraced in this plat as shown by the records of this office.
 Date FEB 27 1983
 County Treasurer

APPROVAL OF CITY ENGINEER OF OMAHA
 I hereby approve this plat of Clifton Place Townhomes (Lots 1 thru 6 inclusive) as to the Design Standards this 27 day of FEBRUARY, 1983.
 City Engineer

I hereby certify that adequate provisions have been made for compliance with Title 51 of the Omaha Municipal Code.
 City Engineer

IN WITNESS WHEREOF, I do hereunto set my hand this 27 day of FEBRUARY, 1983

NDP PARTNERSHIP, a Nebraska corporation,
 by Norman A. Hess, Partner

by Douglas S. Lash, Partner
 by Robert C. Breeding, Partner

CONSENT TO REDUCTION
 NOW ALL MEN by these presents that the United States National Bank of Omaha, mortgagee upon the property described in the certification of survey and embraced within this plat, hereby consents to, ratifies and approves the dedication and plat herein contained.
 IN WITNESS WHEREOF, I do hereunto set my hand this 27 day of FEBRUARY, 1983.
 TITLE: Residential Banking
 BY: William D. Rogers
 ATTORNEY

KNOW ALL MEN by these presents that NDP Partnership, a Nebraska partnership comprised of Norman A. Hess, Douglas S. Lash and Roy C. Breeding, partners in the aforesaid certification of survey and embraced within this plat, in the aforesaid subdivision of land to be subdivided into lots to be numbered as shown, said subdivision to be hereinafter known as Clifton Place Townhomes (lots 1 thru 6 inclusive) and I do hereby ratify and approve of the disposition of my property as shown on this plat, I do further grant a perpetual easement to the Omaha Public Power District, and N.W. Bell Telephone Company, their successors and assigns, to erect, operate, maintain, repair and renew, poles, wires, cables, conduits, and other related facilities, and to extend thereon wires or cables for the carrying of electric, gas, telephone, light, heat and power and for transmission of signals and sounds of all kinds and the reception on, over, through, under and across the South ten feet (10') of Lot 6, the West ten feet (10') of Lots 1 through 6, inclusive and the East five feet (5') of Lots 1 through 6, inclusive. We do further grant a perpetual easement to Metropolitan Utilities District of Omaha, their successors and assigns, to erect, install, operate, maintain, repair and renew pipelines, hydrants, and other related facilities, and to extend thereon pipes, conduits, and other related facilities, and to extend under and across the above described premises and water on, through, permanent buildings shall be placed in the said easement ways, but the same may be used for gardens, walkways, walls, shrubs, landscaping and other purposes that do not then or later interfere with the aforesaid uses or rights herein granted.

ON this 27th day of February, 1983, before me, the undersigned, a Notary Public in and for said County personally came NDP Partnership, a Nebraska partnership comprised of Norman A. Hess, Douglas S. Lash, Roy C. Breeding, and William D. Rogers, known to be the identical persons whose names are subscribed to the dedication on this plat, and acknowledged the execution thereof to be their voluntary act and deed.
 Witness my hand and Notarial Seal at Omaha in said County the day and year last above written.
 Notary Public

CLIFTON PLACE TOWNHOMES
 5/16/1N

| | |
|---|------------------------|
| SCALE: 1" = 20' | DRAWN BY: C.R. |
| DATE: 1-26-83 | REVISION: |
| TITLE: FINAL PLAT OF CLIFTON PLACE TOWNHOMES | |
| CLIENT: NDP PARTNERSHIP 107 28 STREET OMAHA, NE 68102 | DRAWING NUMBER: 100623 |