

A

EXHIBIT "A"

Easement rights attained by virtue of the Plat and Dedications of Schuessler Subdivision, Schuessler Subdivision Replat, Schuessler Subdivision Replat II, Southern Oaks, Southern Oaks Replat I, and Southern Oaks Replat Two, subdivisions as surveyed, platted and recorded in Sarpy County, Nebraska, on, over, through, under and across THOSE PORTIONS of easements described on the recorded plats as a five-foot (5') wide strip of land abutting all front and side boundary lot lines; and an eight-foot (8') wide strip of land abutting all rear boundary lot lines; THOSE PORTIONS of said easements being released are described as follows:

RELEASE DESCRIPTION:

All Easements abutting all of the lot lines of vacated Lots 1 and 2, Schuessler Subdivision, see EXHIBIT "B"; and also together with all Easements abutting all of the lot lines of vacated Lot 1, Schuessler Subdivision Replat, and also the Easements abutting the Westerly line, the Southerly line, and the Easterly line of Lot 2, said Schuessler Subdivision Replat, see EXHIBIT "C"; and also together with the Easements abutting the Southerly line, and the Easterly line of Lot 1, Schuessler Subdivision Replat II, see EXHIBIT "D"; and also together with all Easements abutting all of the lot lines of vacated Lots 92, 93 and 94, Southern Oaks, and also the Easements abutting the Westerly line, and the Northerly line of Lot 90, said Southern Oaks, and also the Easements abutting the Southerly line, and the Westerly line of Lot 91, said Southern Oaks, and also the Easements abutting part of the Northerly line, the Easterly line, and part of the Southerly line of vacated Lot 89, said Southern Oaks (lying East of the Westerly line of Lot 2, Southern Oaks Replat Two), see EXHIBIT "E"; and also together with all Easements abutting all of the lot lines of Lot 2, Southern Oaks Replat I, and also the Easements abutting the Westerly line, the Southerly line, and the Easterly line of Lot 3, said Southern Oaks Replat I, and also the Easements abutting the Westerly line, the Southerly line, and the Easterly line of Lot 4, said Southern Oaks Replat I, and also the Easements abutting part of the Northerly line, the Easterly line, and part of the Southerly line of vacated Lot 1, said Southern Oaks Replat I (lying East of the Westerly line of Lot 2, Southern Oaks Replat Two), see EXHIBIT "F"; and also together with Easements abutting the Northerly line, and part of the Easterly line of Lot 2, Southern Oaks Replat Two (lying five feet North of the Southerly line of Lot 90, Southern Oaks), see EXHIBIT "G".

Release area Lots now know as:

LEGAL DESCRIPTION:

All of Lots 90 and 91, Southern Oaks, a subdivision located in the SW1/4 of Section 34; and also together with Lots 2, 3 and 4, Southern Oaks Replat I, a subdivision located in the SE1/4 of Section 33; and also together with Lot 2, Southern Oaks Replat Two, a subdivision located in said SE1/4 of Section 33; and also together with Lot 2, Schuessler Subdivision Replat, a subdivision located in said SE1/4 of Section 33; and also together with Lot 1, Schuessler Subdivision Replat II, a subdivision located in said SE1/4 of Section 33; all located in Township 14 North, Range 13 East of the 6th P.M., Sarpy County, Nebraska.

Note: See EXHIBIT "H" for Property Drawing and Perimeter Easements to be retained.

RECORDING INFORMATION:

Said Plat and Dedications were filed for record in the office of the Register of Deeds of Sarpy County, Nebraska as follows: Schuessler Subdivision recorded November 12, 1991 as Instrument No. 91-18001; Schuessler Subdivision Replat recorded August 31, 1992 as Instrument No. 92-17873; Schuessler Subdivision Replat II recorded October 13, 1994 as Instrument No. 94-22170; Southern Oaks recorded August 1, 1996 as Instrument No. 96-15315; Southern Oaks Replat I recorded April 18, 1997 as Instrument No. 97-07307; and Southern Oaks Replat Two recorded December 8, 1998 as Instrument No. 98-35150.

RFR



E&A CONSULTING GROUP, INC.
ENGINEERING • PLANNING • FIELD SERVICES
330 NORTH 117TH STREET OMAHA, NE 68154 PHONE (402) 955-4700

Drawn by: JAF

Chkd by: _____

Chkd by: _____

Job No.: P2006.030.001 Date: 03/16/2007

EASEMENT RELEASES

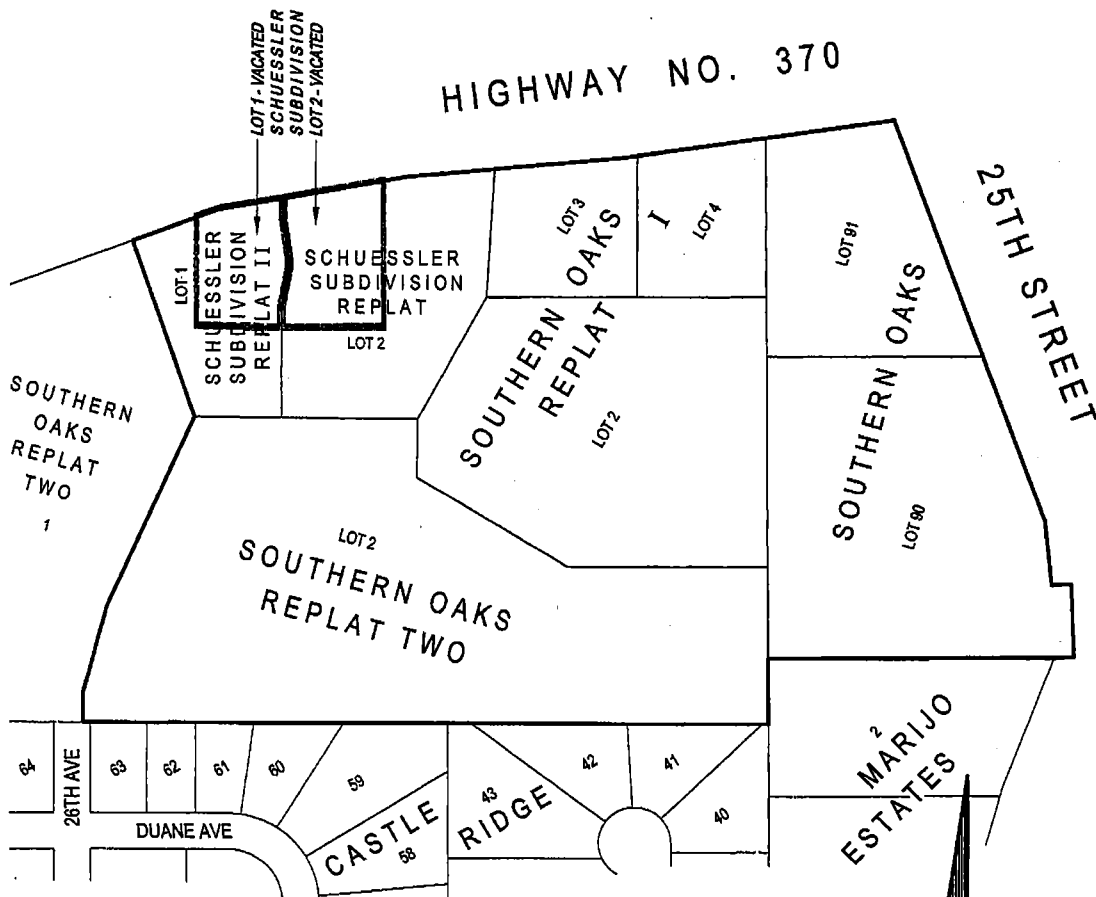
LOT 2, SCHUESSLER SUBDIVISION REPLAT; AND
LOT 1, SCHUESSLER SUBDIVISION REPLAT II;
AND LOTS 90 & 91, SOUTHERN OAKS; AND
LOTS 2, 3 & 4, SOUTHERN OAKS REPLAT I;
AND LOT 2, SOUTHERN OAKS REPLAT TWO
SARPY COUNTY, NEBRASKA

B

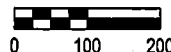
EXHIBIT "B"

HIGHWAY NO. 370

25TH STREET



**EASEMENT RELEASES FOR
SCHUESSLER SUBDIVISION
RECORDED AS INSTRUMENT NO. 91-18001**



Scale: 1" = 200'



E&A CONSULTING GROUP, INC.
ENGINEERING • PLANNING • FIELD SERVICES
330 NORTH 117TH STREET OMAHA, NE 68154 PHONE: (402) 895-4700

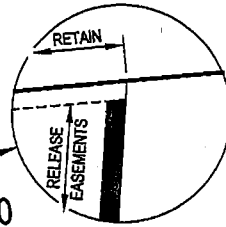
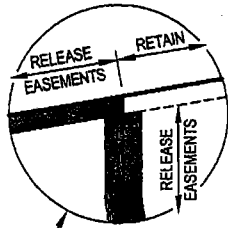
Drawn by: JAF Chkd by: _____ Chkd by: _____

Job No.: P2006.030.001 Date: 03/16/2007

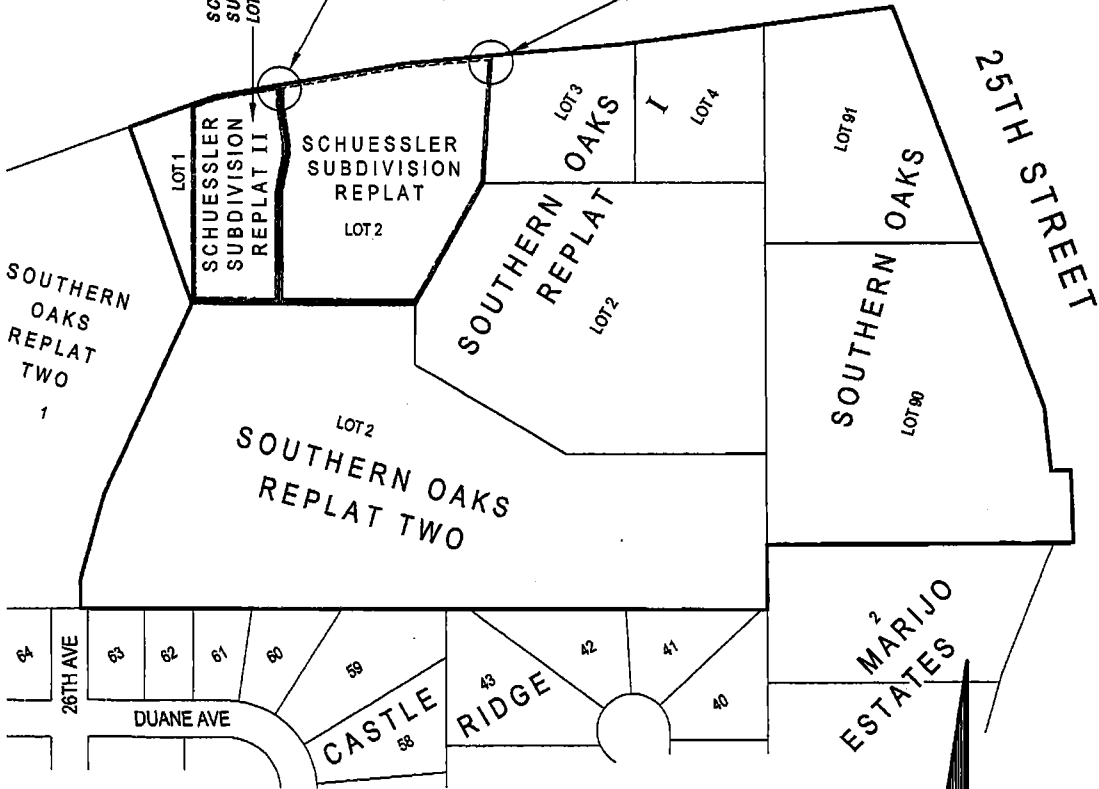
EASEMENT RELEASE
PART OF LOT 2, SCHUESSLER
SUBDIVISION REPLAT; AND PART OF LOT 1,
SCHUESSLER SUBDIVISION REPLAT II
SARPY COUNTY, NEBRASKA

C

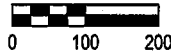
EXHIBIT "C"



HIGHWAY NO. 370



**EASEMENT RELEASES FOR
SCHUESSLER SUBDIVISION REPLAT
RECORDED AS INSTRUMENT NO. 92-17873**



Scale: 1" = 200'



E&A CONSULTING GROUP, INC.
ENGINEERING • PLANNING • FIELD SERVICES
330 NORTH 117TH STREET OMAHA, NE 68164 PHONE: (402) 865-4700

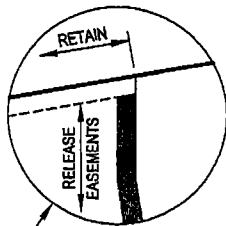
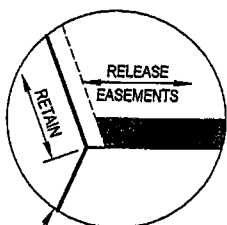
PARTIAL EASEMENT RELEASE
PART OF LOT 2, SCHUESSLER
SUBDIVISION REPLAT; AND PART OF LOT 1,
SCHUESSLER SUBDIVISION REPLAT II
SARPY COUNTY, NEBRASKA

Drawn by: JAF Chkd by: _____ Chkd by: _____

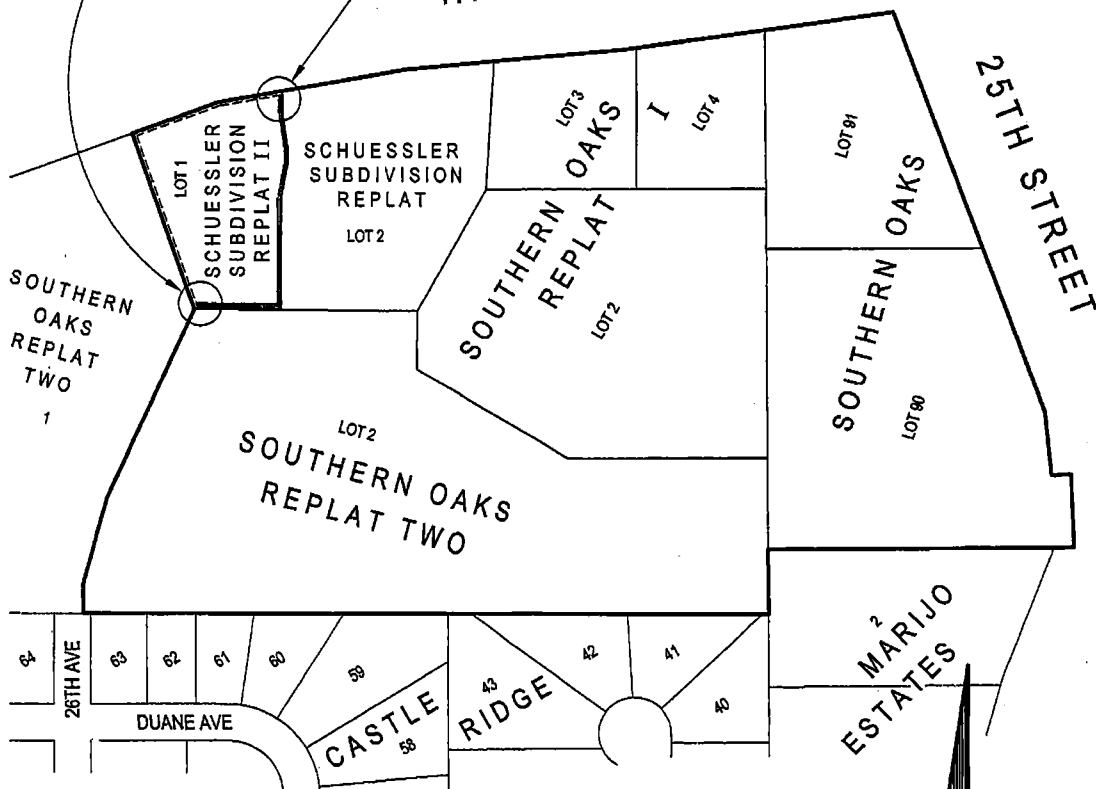
Job No.: P2006.030.001 Date: 03/16/2007

D

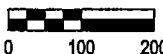
EXHIBIT "D"



HIGHWAY NO. 370



EASEMENT RELEASES FOR
 SCHUESSLER SUBDIVISION REPLAT II
 RECORDED AS INSTRUMENT NO. 94-22170



Scale: 1" = 200'



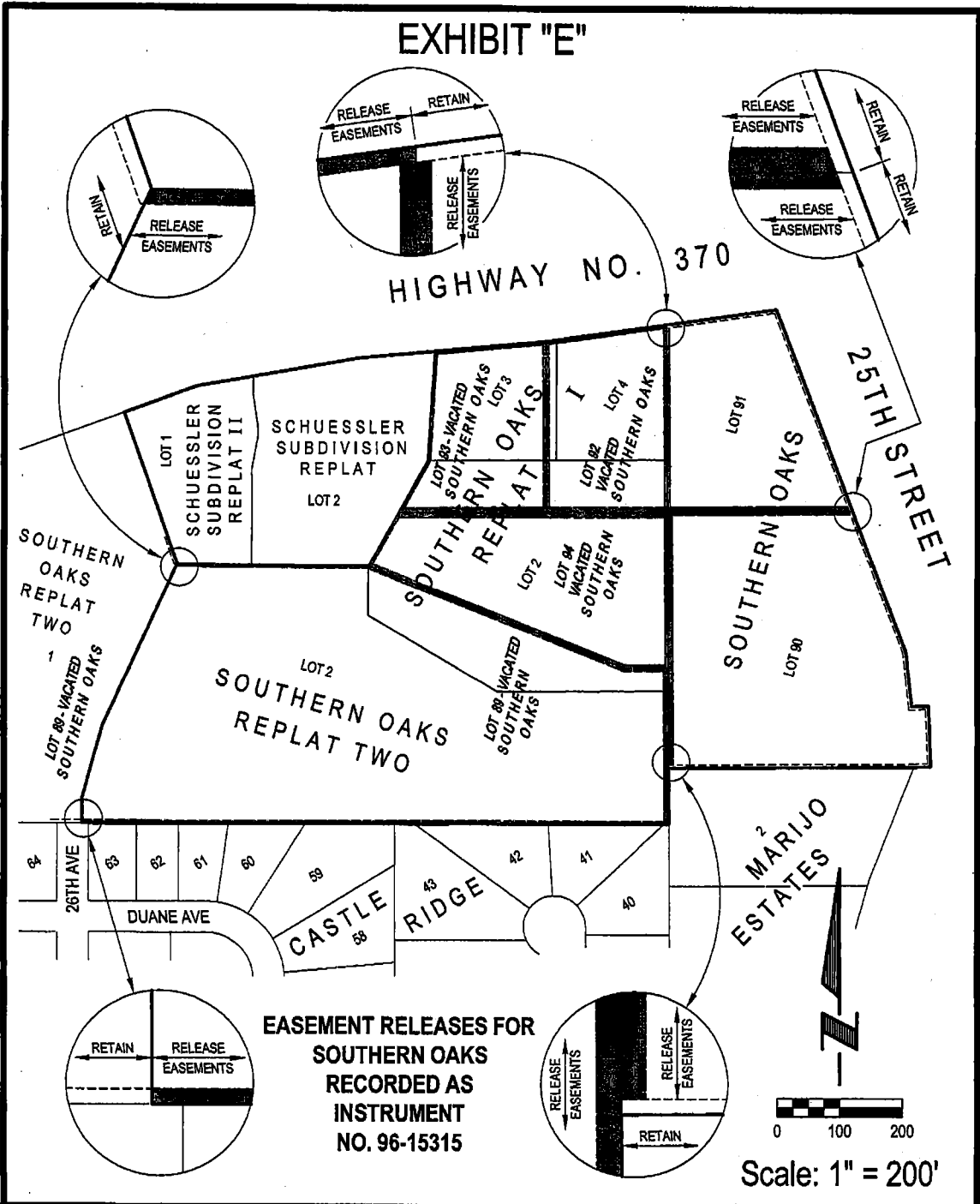
E&A CONSULTING GROUP, INC.
 ENGINEERING • PLANNING • FIELD SERVICES
 330 NORTH 117TH STREET, OMAHA, NE 68154 PHONE: (402) 985-0700

PARTIAL EASEMENT RELEASE
 PART OF LOT 1,
 SCHUESSLER SUBDIVISION REPLAT II
 SARPY COUNTY, NEBRASKA

Drawn by: JAF Chkd by: _____ Chkd by: _____
 Job No.: P2006.030.001 Date: 03/16/2007

U

EXHIBIT "E"



**EASEMENT RELEASES FOR
SOUTHERN OAKS
RECORDED AS
INSTRUMENT
NO. 96-15315**

Scale: 1" = 200'



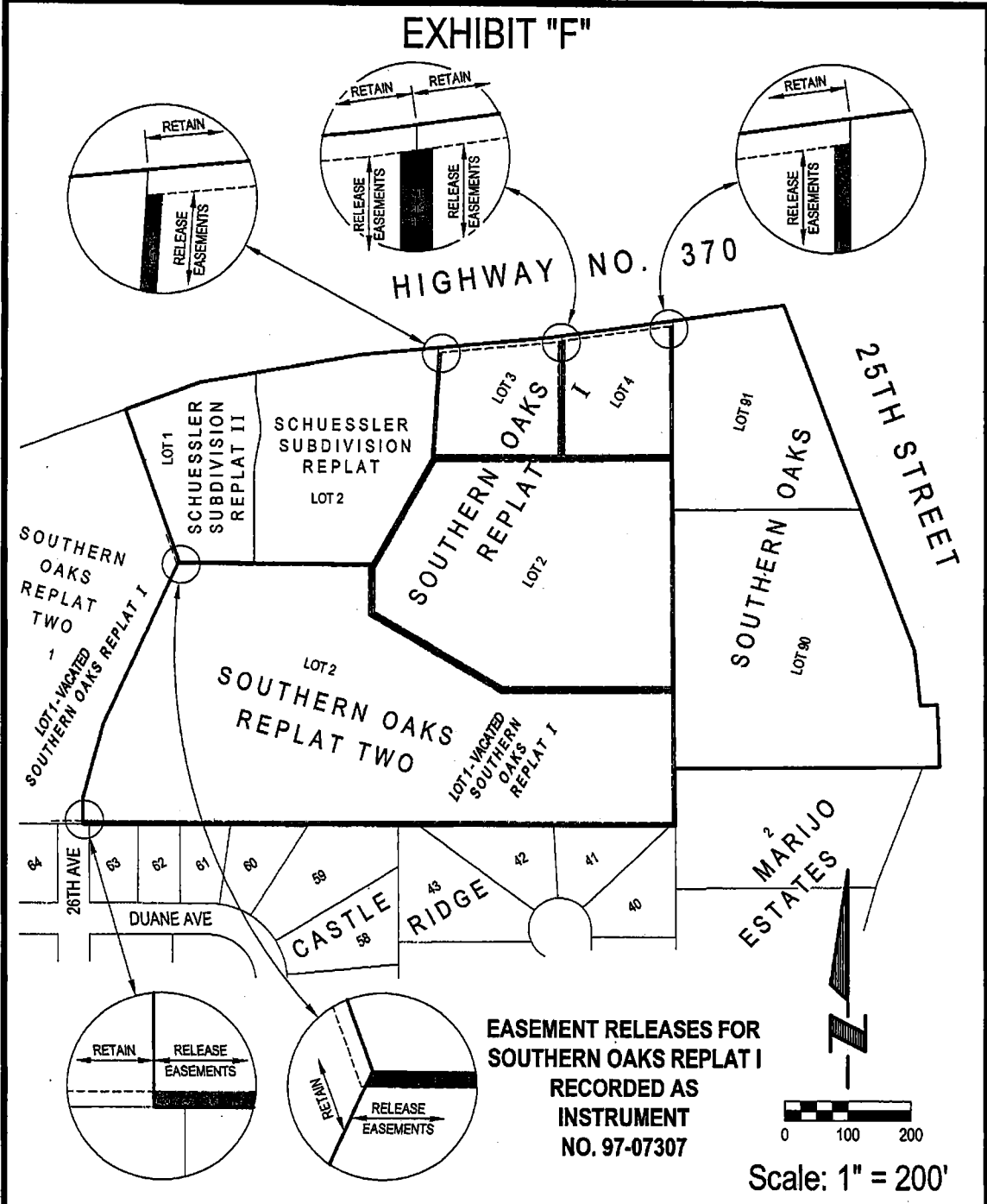
E&A CONSULTING GROUP, INC.
ENGINEERING • PLANNING • FIELD SERVICES
330 NORTH 117TH STREET OMAHA, NE 68154 PHONE: (402) 955-4700

PARTIAL EASEMENT RELEASE
PART OF LOTS 90 & 91, SOUTHERN OAKS; AND
PART OF LOTS 2, 3 & 4, SOUTHERN OAKS REPLAT I;
AND PART OF LOT 2, SOUTHERN OAKS REPLAT TWO
SARPY COUNTY, NEBRASKA

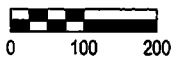
Drawn by: JAF Chkd by: _____ Chkd by: _____
Job No.: P2006.030.001 Date: 03/16/2007

F

EXHIBIT "F"



**EASEMENT RELEASES FOR
SOUTHERN OAKS REPLAT I
RECORDED AS
INSTRUMENT
NO. 97-07307**



Scale: 1" = 200'

e+a E&A CONSULTING GROUP, INC.
ENGINEERING • PLANNING • FIELD SERVICES
330 NORTH 117TH STREET OMAHA, NE 68154 PHONE (402) 865-4700

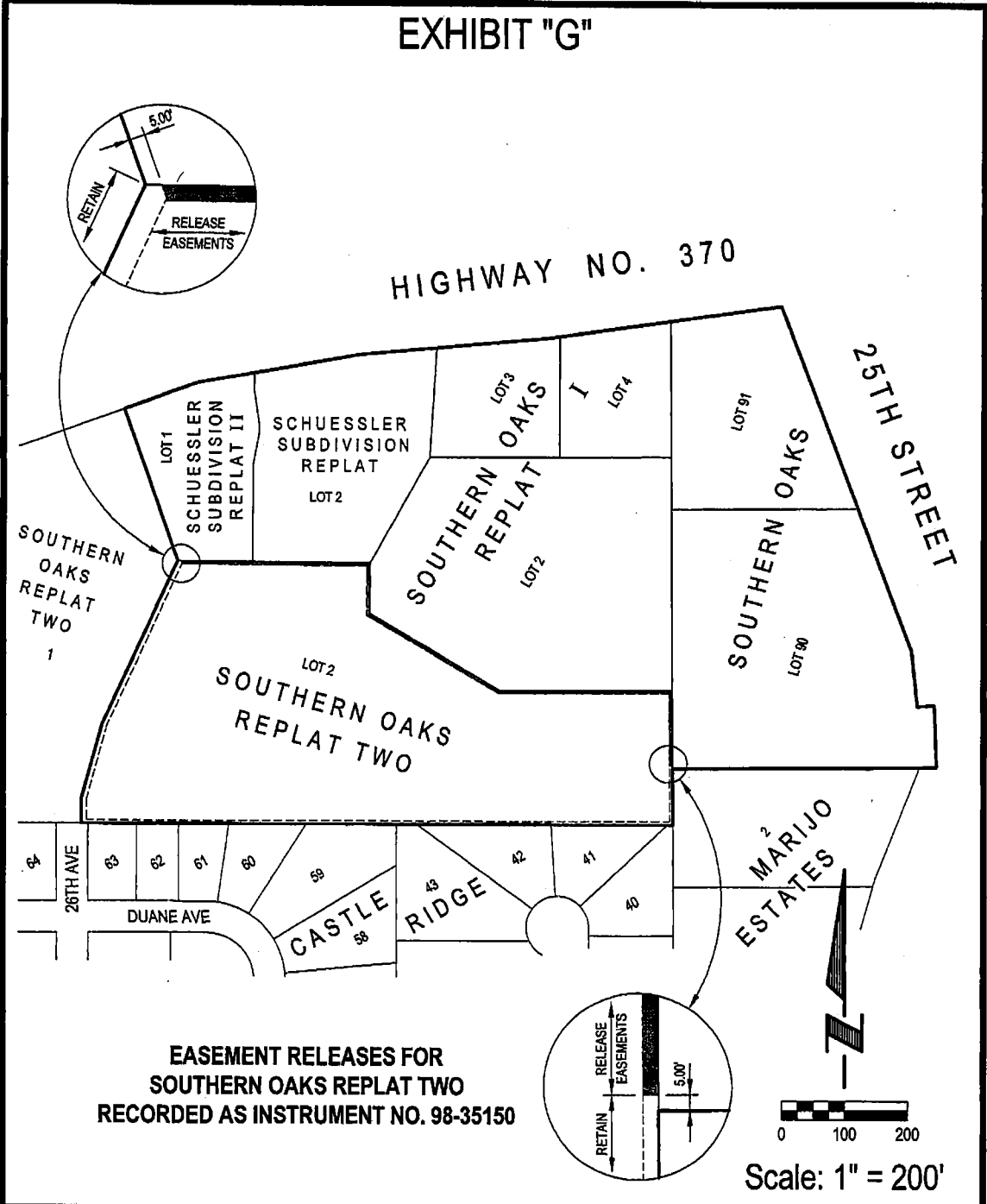
Drawn by: JAF Chkd by: _____ Chkd by: _____

Job No.: P2006.030.001 Date: 03/16/2007

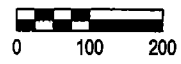
PARTIAL EASEMENT RELEASE
PART OF LOTS 2, 3 & 4, SOUTHERN
OAKS REPLAT I; AND PART OF LOT 2,
SOUTHERN OAKS REPLAT TWO
SARPY COUNTY, NEBRASKA

G

EXHIBIT "G"



**EASEMENT RELEASES FOR
SOUTHERN OAKS REPLAT TWO
RECORDED AS INSTRUMENT NO. 98-35150**



Scale: 1" = 200'

e+a E&A CONSULTING GROUP, INC.
ENGINEERING • PLANNING • FIELD SERVICES
330 NORTH 117TH STREET, OMAHA, NE 68154 PHONE: (402) 895-4700

Drawn by: JAF Chkd by: _____ Chkd by: _____

Job No.: P2006.030.001 Date: 03/16/2007

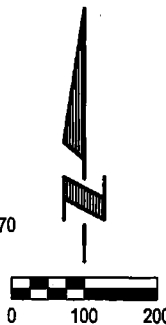
PARTIAL EASEMENT RELEASE
PART OF LOT 2,
SOUTHERN OAKS REPLAT TWO
SARPY COUNTY, NEBRASKA

2007-09462H

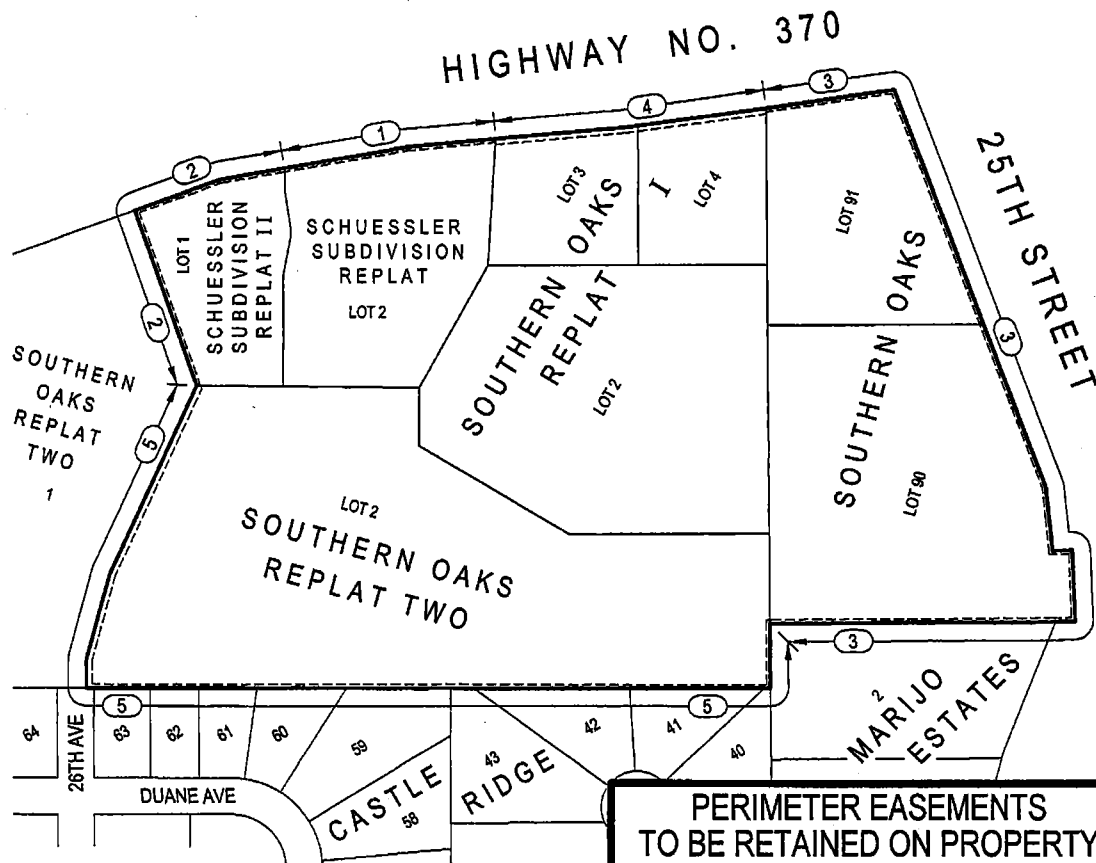
EXHIBIT "H"

PERIMETER EASEMENTS TO BE RETAINED

- ① THE NORTHERLY LINE OF LOT 2, SCHUESSLER SUBDIVISION REPLAT; PERPETUAL EASEMENTS NOTED IN THE PLAT DEDICATION GRANTED TO OMAHA PUBLIC POWER DISTRICT, U.S. WEST COMMUNICATIONS AND CABLE COMPANY; RECORDED AS INSTRUMENT NO. 92-17873
- ② THE NORTHERLY LINE AND THE WESTERLY LINE OF LOT 1, SCHUESSLER SUBDIVISION REPLAT II; PERPETUAL EASEMENTS NOTED IN THE PLAT DEDICATION GRANTED TO OMAHA PUBLIC POWER DISTRICT, U.S. WEST COMMUNICATIONS AND CABLE COMPANY; RECORDED AS INSTRUMENT NO. 94-22170
- ③ THE SOUTHERLY LINE AND THE EASTERLY LINE OF LOT 90 AND THE NORTHERLY LINE AND THE EASTERLY LINE OF LOT 91, SOUTHERN OAKS; PERPETUAL EASEMENTS NOTED IN THE PLAT DEDICATION GRANTED TO OMAHA PUBLIC POWER DISTRICT, U.S. WEST COMMUNICATIONS AND CABLE COMPANY; RECORDED AS INSTRUMENT NO. 96-15315
- ④ THE NORTHERLY LINE OF LOT 3 AND THE NORTHERLY LINE OF LOT 4, SOUTHERN OAKS REPLAT I; PERPETUAL EASEMENTS NOTED IN THE PLAT DEDICATION GRANTED TO OMAHA PUBLIC POWER DISTRICT, U.S. WEST COMMUNICATIONS AND CABLE COMPANY; RECORDED AS INSTRUMENT NO. 97-07307
- ⑤ THE SOUTHERLY LINE, THE WESTERLY LINE AND PART OF THE EASTERLY LINE OF LOT 2, SOUTHERN OAKS REPLAT TWO; PERPETUAL EASEMENTS NOTED IN THE PLAT DEDICATION GRANTED TO OMAHA PUBLIC POWER DISTRICT, U.S. WEST COMMUNICATIONS AND CABLE COMPANY; RECORDED AS INSTRUMENT NO. 98-35150



Scale: 1" = 200'



PERIMETER EASEMENTS TO BE RETAINED ON PROPERTY
 LOT 2, SCHUESSLER SUBDIVISION REPLAT; AND
 LOT 1, SCHUESSLER SUBDIVISION REPLAT II;
 AND LOTS 90 & 91, SOUTHERN OAKS; AND
 LOTS 2, 3 & 4, SOUTHERN OAKS REPLAT I;
 AND LOT 2, SOUTHERN OAKS REPLAT TWO
 SARPY COUNTY, NEBRASKA



E&A CONSULTING GROUP, INC.
 ENGINEERING • PLANNING • FIELD SERVICES
 330 NORTH 17TH STREET OMAHA, NE 68154 PHONE: (402) 695-4700

Drawn by: JAF Chkd by: _____ Chkd by: _____

Job No.: P2006.030.001 Date: 03/16/2007