

N.W. 1/4 SEC. 33-16-12



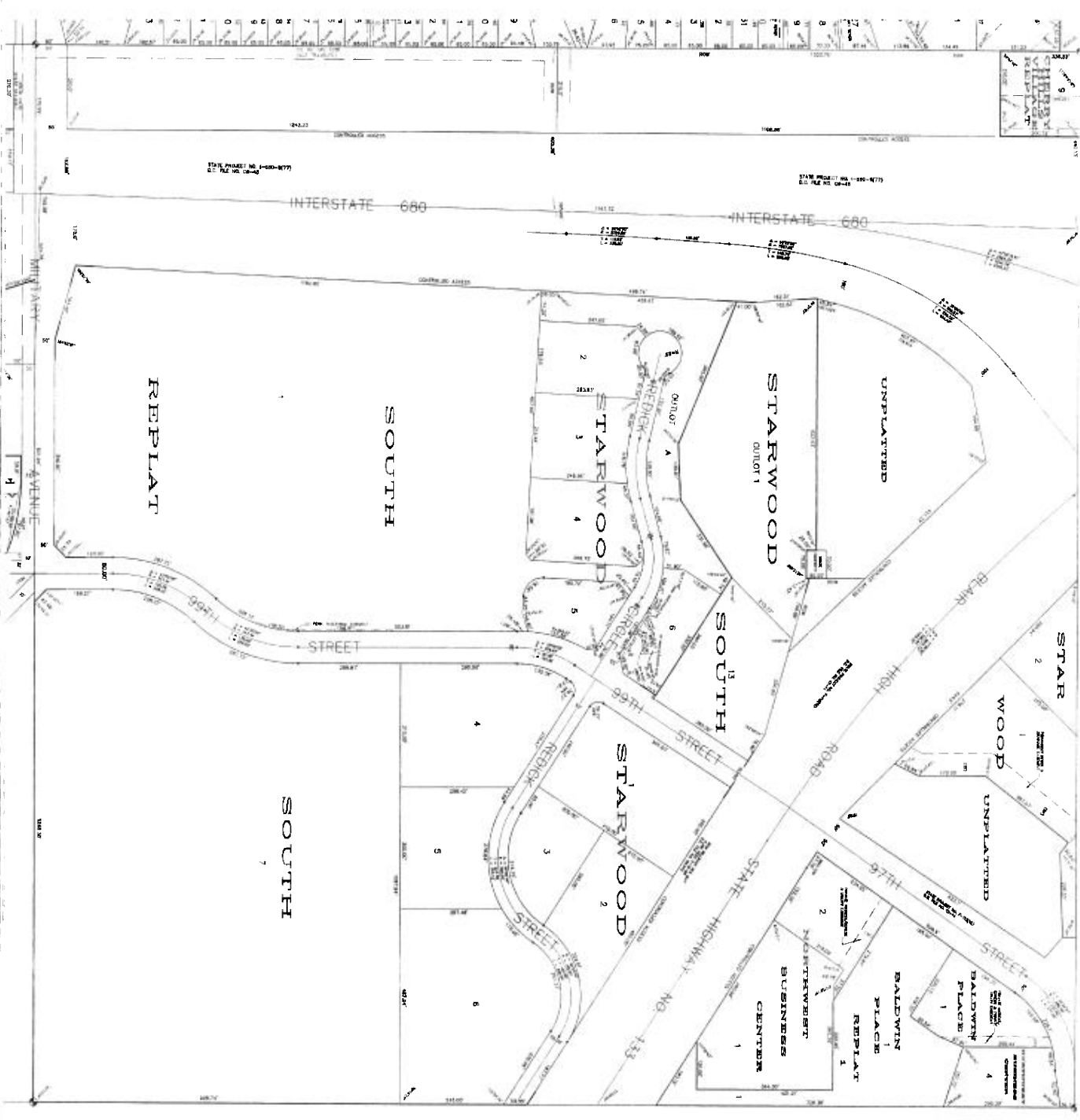
DOUGLAS COUNTY ENGINEER
 156TH & W. MAPLE RD. OMAHA NE. 68116

Drawn by	DATE	COMMENTS
S.M.	8-1-2008	SHERRY HILLS VALLEY REPLAT
Checked by		
S.M.	8-1-2008	

SCALE: 1" = 100' NORTH

INFORMATION ON THIS SHEET SHOULD BE VIEWED WITH THE FINAL PLAT BEFORE BEING USED

NE 1/4 SEC 33-16-12



DOUGLAS COUNTY ENGINEER
 156TH & W. MAPLE RD. OMAHA NE. 68116

DATE	1-14-2002	PROJECT	STARWOOD SOUTH REPLIAT
BY	8-3-2002	PROJECT	CHERRY HILLS REPLIAT
SCALE	1" = 100'	NORTH	

INFORMATION ON THIS SHEET SHOULD BE VERIFIED WITH THE FINAL PLAN BEFORE BEING USED