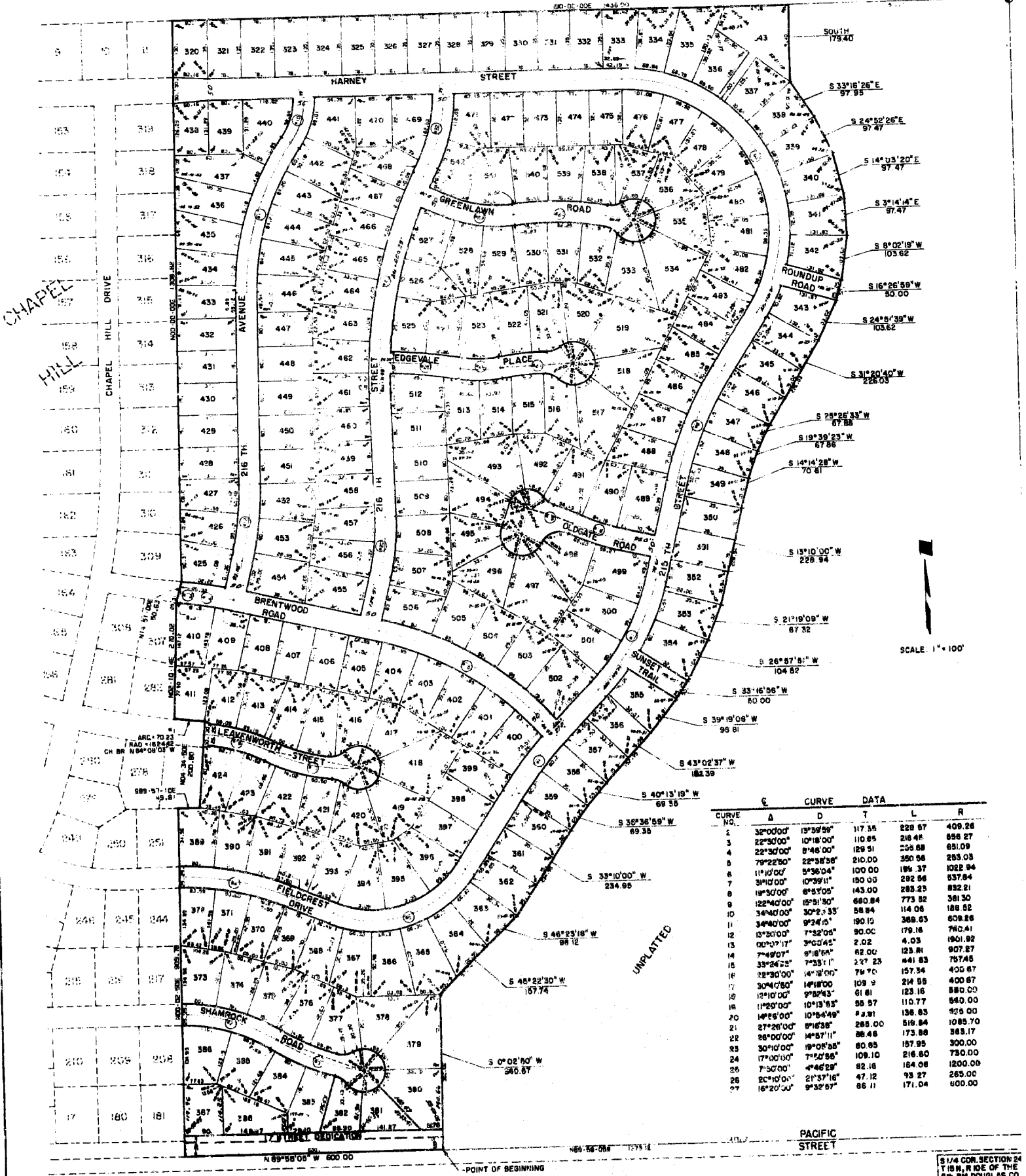


CHAPEL HILL

LOTS 320 THRU 543 INCLUSIVE,
BEING A PLATTING OF PART OF THE
S W 1/4 OF SECTION 24, T15N, R10E OF THE
6TH P.M. DOUGLAS COUNTY, NEBRASKA

UNPLATTED

CENTER OF SEC. 24
T15N, R10E OF THE 6TH
P.M. DOUGLAS CO., NEBR.



CURVE NO.	CURVE DATA				
	A	D	T	L	R
1	32°00'00"	13°59'59"	117.55	229.57	409.28
2	22°30'00"	10°18'00"	110.85	218.45	388.27
3	22°30'00"	8°48'00"	129.51	254.88	481.09
4	79°22'50"	22°38'58"	210.00	390.56	733.03
5	11°10'00"	5°36'04"	100.00	199.37	362.94
6	31°10'00"	10°39'11"	190.00	392.56	637.84
7	19°30'00"	6°57'05"	143.00	283.23	522.21
8	122°40'00"	19°51'30"	660.84	773.52	1361.30
9	34°40'00"	30°27'33"	58.84	114.06	188.52
10	34°40'00"	30°27'33"	58.84	114.06	188.52
11	34°40'00"	30°27'33"	58.84	114.06	188.52
12	15°30'00"	7°52'05"	2.02	4.03	7.04
13	00°00'11"	3°00'45"	90.00	180.00	360.00
14	7°49'07"	3°18'18"	82.00	164.00	328.00
15	32°30'00"	14°18'00"	74.70	149.40	298.80
16	32°30'00"	14°18'00"	74.70	149.40	298.80
17	30°40'00"	14°18'00"	109.2	218.4	436.8
18	12°10'00"	6°09'43"	61.61	123.22	246.44
19	11°20'00"	10°13'43"	55.57	111.14	222.28
20	14°25'00"	10°16'49"	43.81	87.62	175.24
21	27°28'00"	9°16'38"	38.48	76.96	153.92
22	28°00'00"	14°17'11"	80.85	161.70	323.40
23	30°40'00"	19°08'58"	109.10	218.20	436.40
24	17°00'00"	7°02'58"	82.16	164.32	328.64
25	7°30'00"	4°46'29"	47.12	94.24	188.48
26	20°40'00"	21°37'16"	86.11	172.22	344.44
27	16°20'00"	8°32'57"	86.11	172.22	344.44

NOTE:
REVERSE CURVES AT THROAT OF
CUL-DE-SACS HAVE 50' RADII UNLESS OTHERWISE SHOWN
ALL CUL-DE-SACS HAVE 50' RADII UNLESS OTHERWISE SHOWN.
DISTANCES ON CURVES ARE ARC DISTANCES
NOT CHORD DISTANCES.

S 1/4 COR. SECTION 24
T 15 N, R 10 E OF THE
6TH P.M. DOUGLAS CO.
NEBRASKA.

14 ENTERED IN 1911
27 DAY

