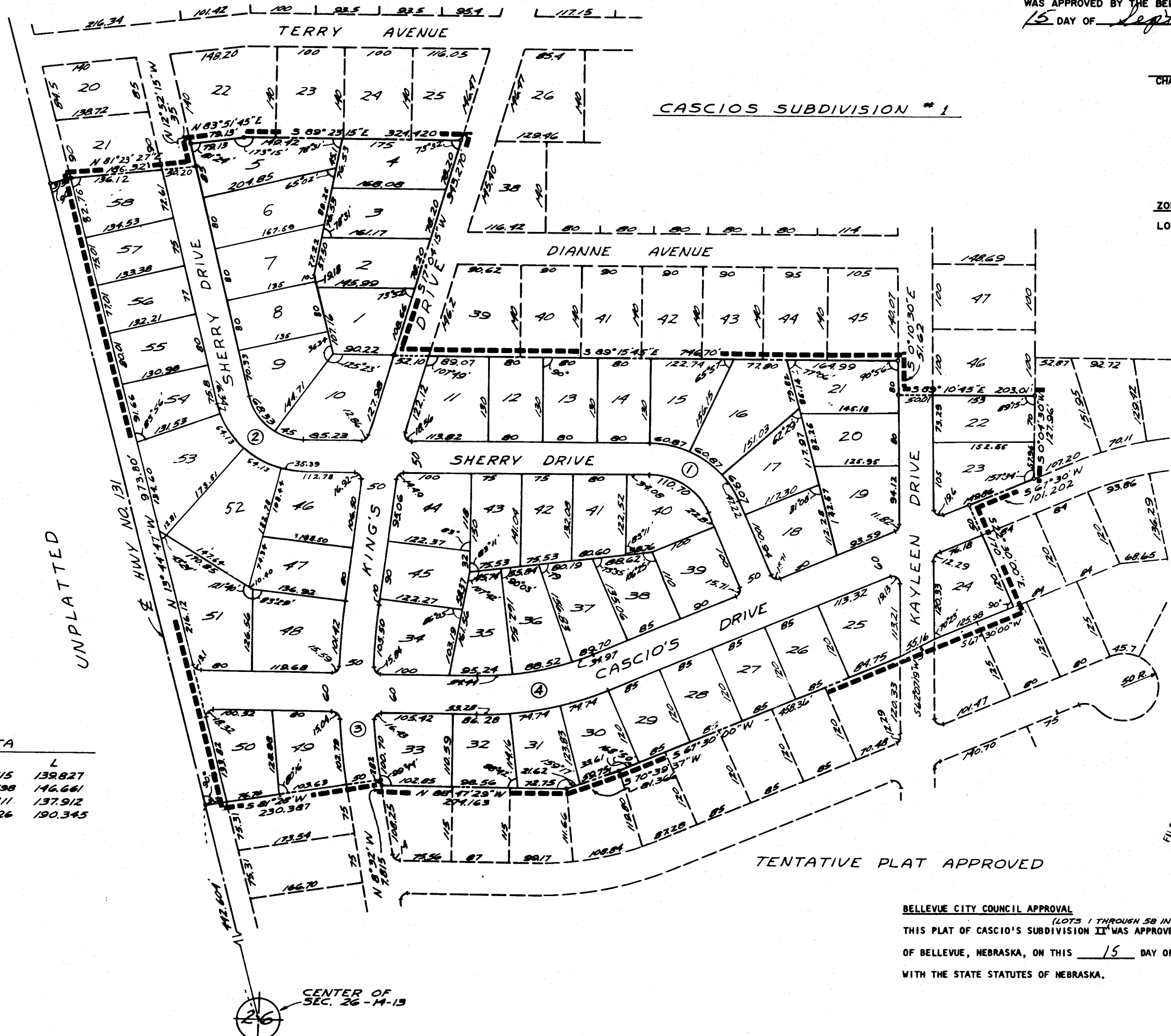




SCALE: 1"=100'

CASCIO'S SUBDIVISION II

A SUBDIVISION LOCATED IN LOT 1 GREGG'S CHOICE ACRES IN THE NORTH 1/2 OF SEC. 26, T-14-N, R-13-E, OF THE 6TH P.M., SARPY COUNTY, NEBRASKA. (LOTS 1 THRU 58)



BELLEVUE CITY PLANNING COMMISSION
THIS PLAT OF CASCIO'S SUBDIVISION II (LOTS 1 THROUGH 58 INCLUSIVE) WAS APPROVED BY THE BELLEVUE CITY PLANNING COMMISSION THIS 15 DAY OF Sept A.D., 1961

Chas. Jones
CHAIRMAN OF BELLEVUE CITY PLANNING COMMISSION

ZONING LEGEND
LOTS 1 THRU 58 R-2

SURVEYOR'S CERTIFICATE
I HEREBY CERTIFY THAT WE HAVE SURVEYED THE SUBDIVISION DESCRIBED HEREIN AND HAVE PLACED IRON PINS (OR, ON COMPLETION OF GRADING, WILL PLACE IRON PINS) AT THE CORNERS OF ALL LOTS, STREETS, AVENUES ANGLE POINTS AND ENDS OF ALL CURVES. SAID SUBDIVISION IS KNOWN AS CASCIO'S SUBDIVISION II AND IS LOCATED IN LOT 1 OF GREGG'S CHOICE ACRES, IN THE NORTH HALF OF SECTION 26, TOWNSHIP 14 NORTH, RANGE 13 EAST OF THE 6TH P. M., SARPY COUNTY, NEBRASKA, MORE PARTICULARLY DESCRIBED AS FOLLOWS:
COMMENCING AT THE CENTER OF SECTION 26; THENCE NORTH 13° 44' 47" WEST (ASSUMED BEARING) A DISTANCE OF 442.60 FEET; THENCE NORTH 76° 15' 13" EAST A DISTANCE OF 33 FEET TO THE POINT OF BEGINNING; THENCE NORTH 13° 44' 47" WEST ALONG THE EAST HIGHWAY RIGHT-OF-WAY A DISTANCE OF 973.80 FEET; THENCE NORTH 81° 27' 27" EAST ALONG THE SOUTH LINE OF CASCIO'S 1st ADDITION A DISTANCE OF 186.32 FEET; THENCE NORTH 12° 52' 15" WEST ALONG THE EAST RIGHT-OF-WAY LINE OF SHERRY DRIVE OF CASCIO'S 1st ADDITION, A DISTANCE OF 35.00 FEET; THENCE NORTH 83° 51' 45" EAST ALONG THE SOUTH LINE OF CASCIO'S 1st ADDITION, A DISTANCE OF 79.13 FEET; THENCE SOUTH 89° 23' 15" EAST ALONG THE SOUTH LINE OF CASCIO'S 1st ADDITION, A DISTANCE OF 324.42 FEET; THENCE SOUTH 17° 04' 15" WEST ALONG THE WEST RIGHT-OF-WAY LINE OF KINGS DRIVE A DISTANCE OF 343.27 FEET; THENCE SOUTH 89° 15' 45" EAST ALONG THE SOUTH LINE OF CASCIO'S 1st ADDITION, A DISTANCE OF 746.70 FEET; THENCE SOUTH 0° 10' 30" EAST ALONG THE WEST RIGHT-OF-WAY LINE OF KAYLEEN DRIVE A DISTANCE OF 51.62 FEET; THENCE SOUTH 89° 10' 45" EAST ALONG THE SOUTH LINE OF CASCIO'S 1st ADDITION, A DISTANCE OF 203.01 FEET; THENCE SOUTH 0° 4' 30" WEST A DISTANCE OF 127.96 FEET; THENCE SOUTH 67° 30' 00" WEST A DISTANCE OF 101.20 FEET; THENCE SOUTH 22° 30' 00" EAST A DISTANCE OF 170 FEET; THENCE SOUTH 67° 30' 00" WEST A DISTANCE OF 125.98 FEET; THENCE SOUTH 62° 07' 19" WEST A DISTANCE OF 55.16 FEET; THENCE SOUTH 67° 30' 00" WEST A DISTANCE OF 458.36 FEET; THENCE SOUTH 70° 39' 37" WEST A DISTANCE OF 81.37 FEET; THENCE NORTH 88° 47' 29" WEST A DISTANCE OF 274.16 FEET; THENCE NORTH 8° 32' 00" WEST A DISTANCE OF 7.82 FEET; THENCE SOUTH 81° 28' 00" WEST A DISTANCE OF 230.39 FEET TO THE POINT OF BEGINNING.

DATE: July 18th 1961

Em. Jelleka
REGISTERED LAND SURVEYOR - LB-1374

APPROVAL OF COUNTY SURVEYOR
I HEREBY APPROVE OF THIS PLAT OF CASCIO'S SUBDIVISION II (LOTS 1 THRU 58, INCLUSIVE) ON THIS 21 DAY OF July A.D., 1961.

Frank W. Davis
COUNTY SURVEYOR

DEDICATION
KNOW ALL MEN BY THESE PRESENTS: THAT AVERY REALTY COMPANY, INC., BEING SOLE OWNER AND PROPRIETOR OF THE LAND DESCRIBED IN THE SURVEYOR'S CERTIFICATE AND EMBRACED WITHIN THIS PLAT, HAVE CAUSED THE SAME TO BE SUBDIVIDED INTO LOTS AND STREETS, SAID SUBDIVISION TO BE KNOWN AS CASCIO'S SUBDIVISION II, THE LOTS NUMBERED AS SHOWN AND IT HEREBY RATIFIES AND APPROVES OF THE DISPOSITION OF ITS PROPERTY AS SHOWN ON THIS PLAT, AND IT HEREBY DEDICATES TO THE PUBLIC FOR PUBLIC USE, THE STREETS SHOWN HEREIN. THE ABOVE OR FOREGOING SUBDIVISION LOCATED IN THE NORTH HALF OF SECTION 26, TOWNSHIP 14 NORTH, RANGE 13 EAST, AS APPEARS ON THIS PLAT, IS MADE WITH FREE CONSENT AND IN ACCORDANCE WITH THE DESIRE OF THE UNDERSIGNED OWNER AND PROPRIETOR.
IN WITNESS WHEREOF, THE FOLLOWING DULY AUTHORIZED OFFICERS OF SAID CORPORATION DO HERETO SET THEIR HANDS THIS 19th DAY OF July A.D., 1961.

AVERY REALTY COMPANY, INC.
Alfred Cascio
ALFRED CASCIO, PRESIDENT
Eileen Cascio
EILEEN CASCIO, SECRETARY

ACKNOWLEDGEMENT OF NOTARY
STATE OF NEBRASKA }
COUNTY OF DOUGLAS } SS:
ON THIS 19th DAY OF July A.D., 1961, BEFORE ME, A NOTARY PUBLIC IN AND FOR SAID COUNTY, PERSONALLY APPEARED ALFRED CASCIO, PRESIDENT OF AVERY REALTY COMPANY, INC., PERSONALLY KNOWN TO ME TO BE THE IDENTICAL PERSON WHO EXECUTED THE FOREGOING DEDICATION AND HE ACKNOWLEDGED THAT HE EXECUTED SAID DEDICATION AS HIS VOLUNTARY ACT AND DEED AS SUCH OFFICER AND AS THE VOLUNTARY ACT AND DEED OF SAID CORPORATION AND THE SEAL OF SAID CORPORATION WAS THERETO AFFIXED BY ITS AUTHORITY.
WITNESS MY HAND AND NOTARIAL SEAL AT OMAHA, NEBRASKA, IN SAID COUNTY, THE DATE LAST ABOVE SAID.

Em. Jelleka
NOTARY PUBLIC

MY COMMISSION EXPIRES ON THE 20th DAY OF November A.D., 1965.

Frank W. Davis
SARPY COUNTY BUILDING INSPECTOR

CENTERLINE CURVE DATA

Δ	R	T	D	L	
1	66°45'45"	120.00	79.069	48.2715	139.827
2	76°23'30"	110.00	86.549	52.6598	146.661
3	8°06'16"	975.00	69.071	5.9411	137.912
4	23°42'31"	460.00	96.554	12.5926	190.345

NOTE: ALL BLOCK CORNERS HAVE 10' RADIUS

COUNTY TREASURER'S CERTIFICATE
I HEREBY CERTIFY THAT THE RECORDS OF MY OFFICE SHOW NO TAXES DUE OR DELINQUENT UPON THE PROPERTY DESCRIBED IN THE CERTIFICATE OF SURVEY AS OF THIS DAY OF 17th Sept A.D., 1961.
Robert D. Day
SARPY COUNTY TREASURER

APPROVAL OF SARPY COUNTY BOARD OF COMMISSIONERS
THIS PLAT OF CASCIO'S SUBDIVISION II (LOTS 1 THROUGH 58 INCLUSIVE) WAS APPROVED AND ACCEPTED BY THE SARPY COUNTY BOARD OF COMMISSIONERS ON THIS 25th DAY OF Sept A.D., 1961.
Frank Johnson
CHAIRMAN OF THE BOARD OF COMMISSIONERS

BELLEVUE CITY COUNCIL APPROVAL
(LOTS 1 THROUGH 58 INCLUSIVE)
THIS PLAT OF CASCIO'S SUBDIVISION II WAS APPROVED AND ACCEPTED BY THE CITY COUNCIL OF THE CITY OF BELLEVUE, NEBRASKA, ON THIS 15 DAY OF Sept A.D., 1961, IN ACCORDANCE WITH THE STATE STATUTES OF NEBRASKA.

Harlan H. Lewis
MAYOR
Mary Stricklett
CITY CLERK

SARPY COUNTY PLANNING COMMISSION
THIS PLAT OF CASCIO'S SUBDIVISION II (LOTS 1 THROUGH 58 INCLUSIVE) WAS APPROVED BY THE SARPY COUNTY PLANNING COMMISSION THIS 21st DAY OF Sept A.D., 1961.
Frank Johnson
CHAIRMAN OF SARPY COUNTY PLANNING COMMISSION

FILED FOR RECORD IN SARPY COUNTY NEBRASKA ON July 19 1961 AT 11:30 O'CLOCK A.M.
AND RECORDED IN BOOK 4 of Plat PAGE 24

