

94-07686

# ORDINANCE RECORD

No. 728—Revised & Corrected Inc., Omaha

ORDINANCE NO. 2318

AN ORDINANCE TO ANNEX TO THE CITY OF BELLEVUE, SARPY COUNTY, NEBRASKA, CERTAIN LANDS, LOTS, AND REAL ESTATE LYING WITHIN THE BELOW DESCRIBED BOUNDARIES, TO THE CITY OF BELLEVUE, SARPY COUNTY, NEBRASKA, AND DESIGNATING AN EFFECTIVE DATE.

WHEREAS, ALL OF THE LOTS, LANDS, AND REAL ESTATE LYING WITHIN THE BOUNDARIES DESCRIBED AS FOLLOWS, TO WIT:

A tract of land located in the North East Quarter of Section 23, Township 14 North, Range 13 East, of the Sixth P.M., Sarpy County, Nebraska, more particularly described as follows:

Lots 1 through 6, Briwood Estates.

ARE CONTIGUOUS AND ADJACENT TO THE CITY OF BELLEVUE, NEBRASKA AND ARE URBAN OR SUBURBAN IN CHARACTER, AND

WHEREAS, SAID REAL ESTATE WILL RECEIVE MATERIAL BENEFITS AND ADVANTAGES FROM ANNEXATION TO THE SAID CITY.

NOW, THEREFORE, BE IT ORDAINED BY THE MAYOR AND CITY COUNCIL OF THE CITY OF BELLEVUE, NEBRASKA:

Section 1. All of the real estate lying within the area heretofore described be and the same hereby is included within the boundaries and territory of the City of Bellevue, Nebraska, and said lands and the persons residing thereon shall hereafter be subject to all of the rules, regulations ordinances, taxes, and all other burdens and benefits of other persons and territory included within the City of Bellevue, Nebraska.

Section 2. This ordinance shall take effect after its passage, approval and publication according to law.

007686

CMY  
r006

94-07686 A

# ORDINANCE RECORD

No. 728—Revised & Complete Inc., Ohio

Passed and approved this 23<sup>rd</sup> day of July



*Joseph T. Balkin*  
Mayor

*Brenda Hardy*  
City Clerk

First reading July 9, 1984

Second reading July 23, 1984

Third reading \_\_\_\_\_

Proof	<i>Cr</i>
D.E.	<i>dy</i>
Verify	
Filmed	
Checked	
Fee \$	<i>1.00</i>

INSTRUMENT NUMBER  
**94-007686**

94 APR -5 PM 3:13

*Carol A. Martin*  
REGISTER OF D.V.D.S

94-07086 B

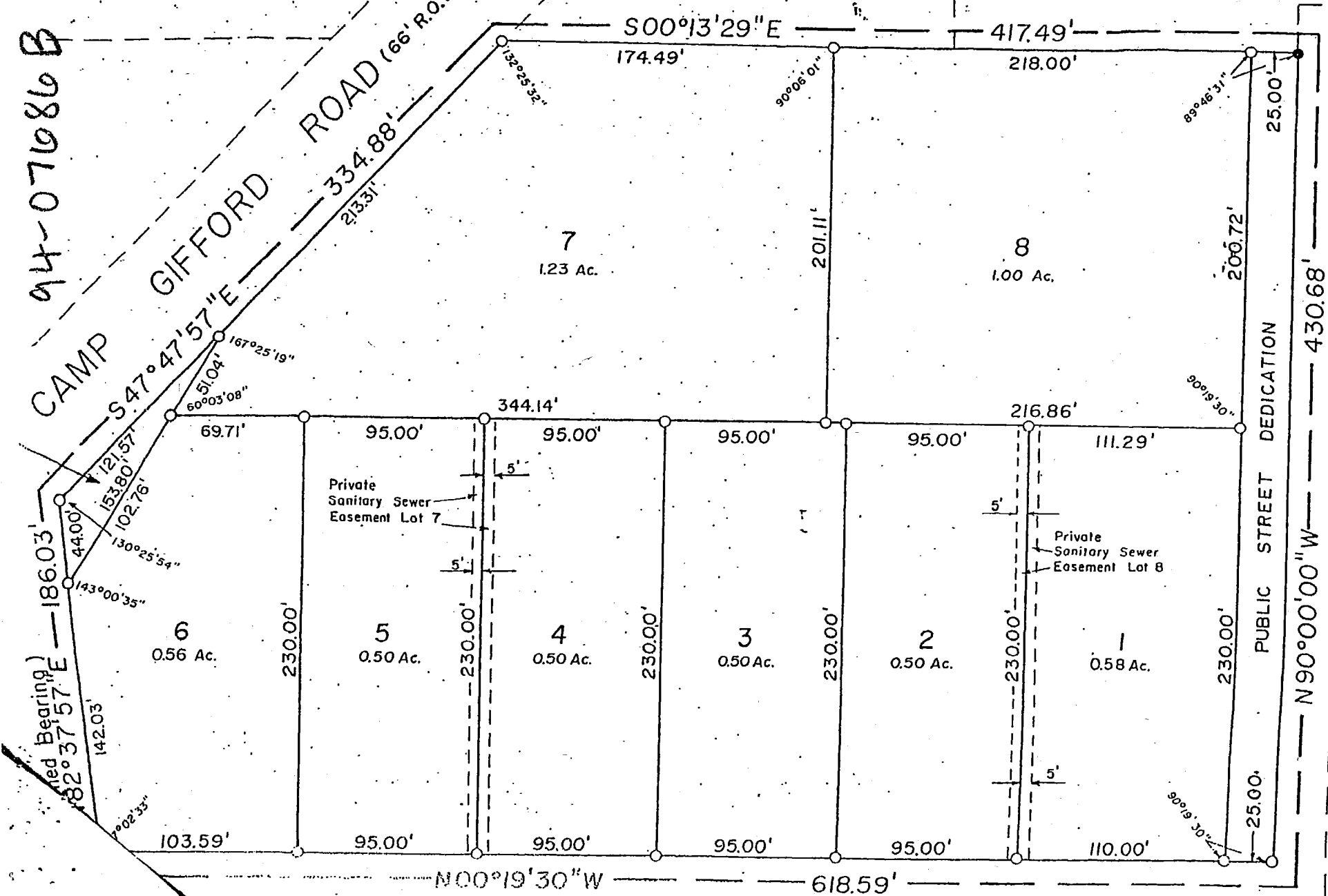
5A1A

5B1A1

CAMP GIFFORD ROAD (66' R.O.W.)

182°37'57"E

CAMP GIFFORD ROAD (66' R.O.W.)



S00°13'29"E

417.49'

174.49'

218.00'

7

1.23 Ac.

8

1.00 Ac.

S47°47'57"E

69.71'

95.00'

344.14'

95.00'

95.00'

95.00'

216.86'

111.29'

6

0.56 Ac.

5

0.50 Ac.

4

0.50 Ac.

3

0.50 Ac.

2

0.50 Ac.

1

0.58 Ac.

103.59'

95.00'

95.00'

95.00'

95.00'

110.00'

N00°19'30"W

618.59'

89°46'31"

25.00'

200.72'

90°19'30"E

PUBLIC STREET DEDICATION

430.68'

N90°00'00"W

25.00'

90°19'30"E

143°00'35"

44.00'

153.80'

102.76'

142.03'

130°25'54"

60°03'08"

51.04'

167°25'19"

121.57'

132°25'32"

213.31'

334.88'

213.31'

132°25'32"

90°06'01"

201.11'

90°19'30"E

25.00'

90°19'30"E

25.00'

90°19'30"E

25.00'

90°19'30"E

25.00'

90°19'30"E

25.00'

90°19'30"E

25.00'

90°19'30"E

25.00'

90°19'30"E

25.00'

90°19'30"E

25.00'

90°19'30"E

25.00'

90°19'30"E

25.00'

90°19'30"E

25.00'

90°19'30"E

25.00'

90°19'30"E

25.00'

Private Sanitary Sewer Easement Lot 7

Private Sanitary Sewer Easement Lot 8