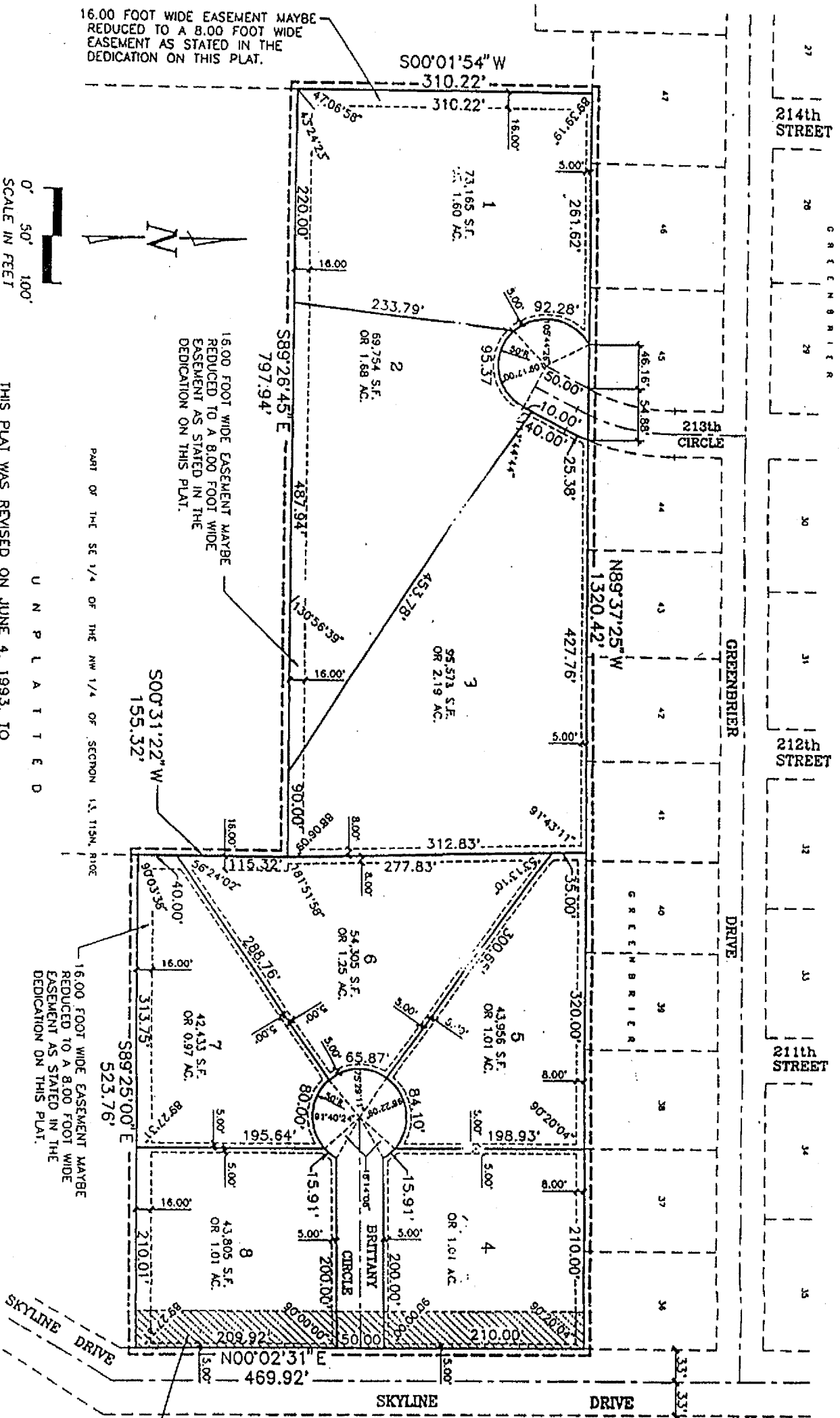


BRITTANY ESTATES

LOTS 1 THRU 8, INCLUSIVE

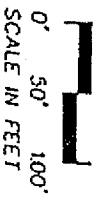


16.00 FOOT WIDE EASEMENT MAYBE REDUCED TO A 8.00 FOOT WIDE EASEMENT AS STATED IN THE DEDICATION ON THIS PLAT.

16.00 FOOT WIDE EASEMENT MAYBE REDUCED TO A 8.00 FOOT WIDE EASEMENT AS STATED IN THE DEDICATION ON THIS PLAT.

16.00 FOOT WIDE EASEMENT MAYBE REDUCED TO A 8.00 FOOT WIDE EASEMENT AS STATED IN THE DEDICATION ON THIS PLAT.

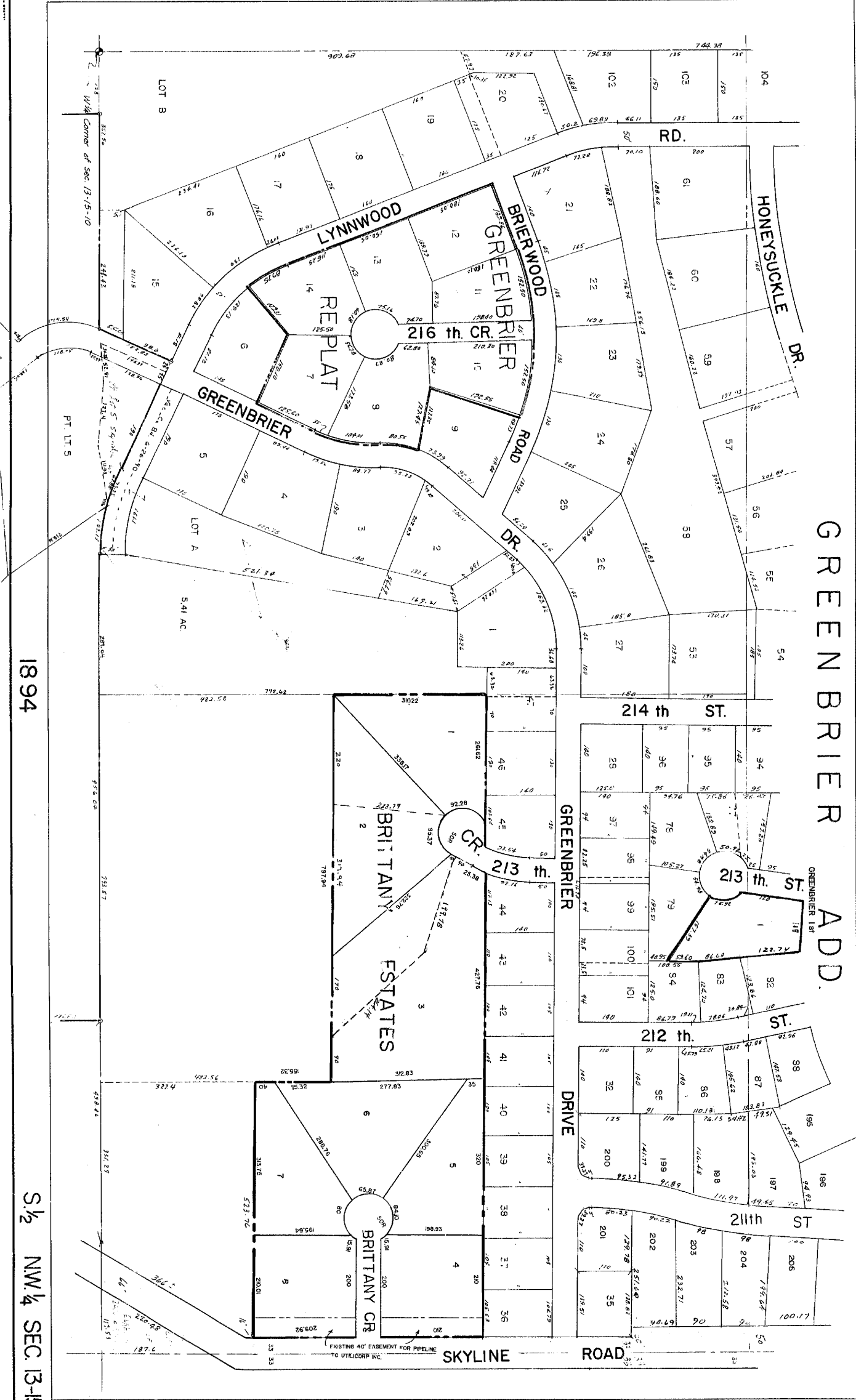
EXISTING 40.00' WIDE PIPE LINE EASEMENT ASSIGNED TO UTILICORP UNITED INC. RECORDED IN MISC. BOOK 765 AT PAGE 59 OF THE DOUGLAS COUNTY RECORDS.



THIS PLAT WAS REVISED ON JUNE 4, 1993, TO SHOW THE SUBDIVISION OF LOTS 1, 2, AND 3, AS APPROVED BY THE CITY OF ELKHORN, NEBRASKA.

U N P L A T T E D

TD
 2 THOMPSON, DRESSSEN & DORNER
 Consulting Engineers & Land Surveyors
 1600 G.D. WEAVER ROAD
 ELKHORN, NE 68122



GREENBRIER ADD.

1898

1896

1894

S 1/2 NW 1/4 SEC. 13-15-10

PLAT 10-3

R-10

10-2

10-3

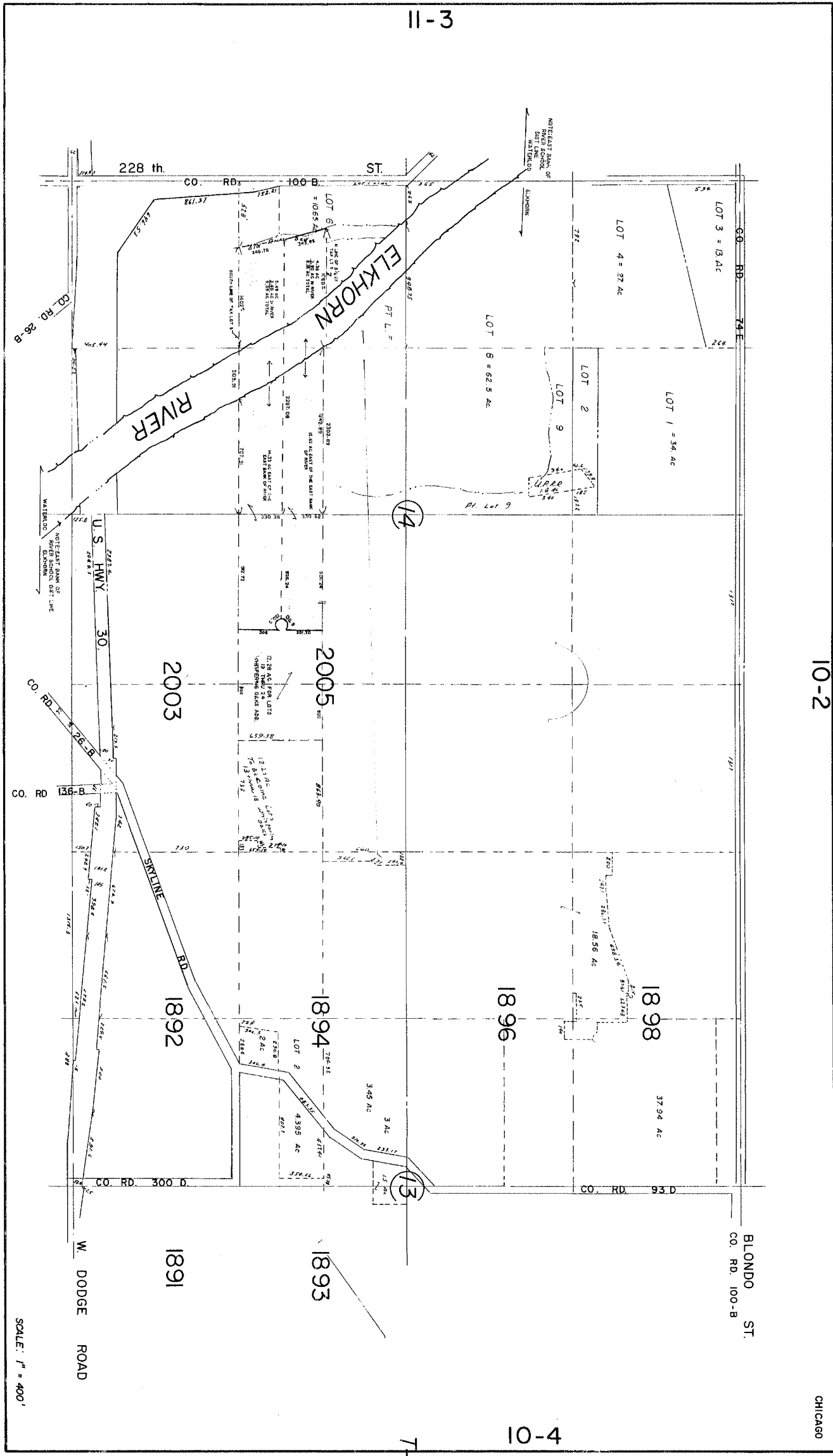
CHICAGO

10-4

T-15

11-3

T-15



SCALE: 1" = 400'

14-0

R-10

13-1