

~~ME NW~~
ME NW

14.14.11

Birchfield

BRIEF LEGAL:

SINCE DATE: _____
SEARCHER NOTES _____

PRIOR POLICY: TA-

PHM _____ SEE ATTACHED
FIRST SPLIT _____

BOOK/PAGE	DATE	INST.	INDEX	GRANTOR	GRANTEE
+ 45.52		WD			
+ 54.67		WD			
+ 6.366		Agresse			
+ 54.655		WD			
+ 91-327		WD			
+ 101.447		WD			
CT 45.383	7.13.72	EASE	(WEST of us)		TL17
+ 45.384	7.13.72	EASE	(WEST of us)		TL17
+ 148.2850		WD			
47.143	3.15.74	Notice	MUD (water)		
CT 47.708	11.25.74	EASE	(WEST of us)		
CT 48.361	7.18.75	Rep Appr.	WEST of us		
+ 154.3984		WD			
+ 54.597	9.4.81	Notice	MUD (gas)		
CT 59.2008	7.16.84	EASE	"Outlet B"		
CT 89.15758	11.9.89	R/W	Adj' to Harrison St:		
CT 89.15759	11.9.89	WD	(TL15)		SARBY County
CT 89.15760	11.9.89	R/W	in Harrison St		

-/ Takeoff
C/ copy
T/ T file
+ /looked at and OK

BRIEF LEGAL:
 SAROY
 SINCE DATE:
 SEARCHER NOTES

PRIOR POLICY: TA

PMN SEE ATTACHED
 FIRST SPLIT

BOOK/PAGE Inst. No.	DATE MO/DAY/YR	INST.	GRANTOR	INDEX	GRANTEE
89-15761	11.9.89	R/W	in Harrison St (A+B)		
89-16005	11.15.89	W/O	in Harrison St		County of SAROY
89-16007	11.15.89	R/W	in Harrison St		
89-16006	11.15.89	R/W	in Harrison St		
92-09613	5.15.92	W/O			CSI
92-09614	5.15.92	DT			Released on Birchfield lots 1-76 + addlot A+B
92-9648	5.15.92	Plst			

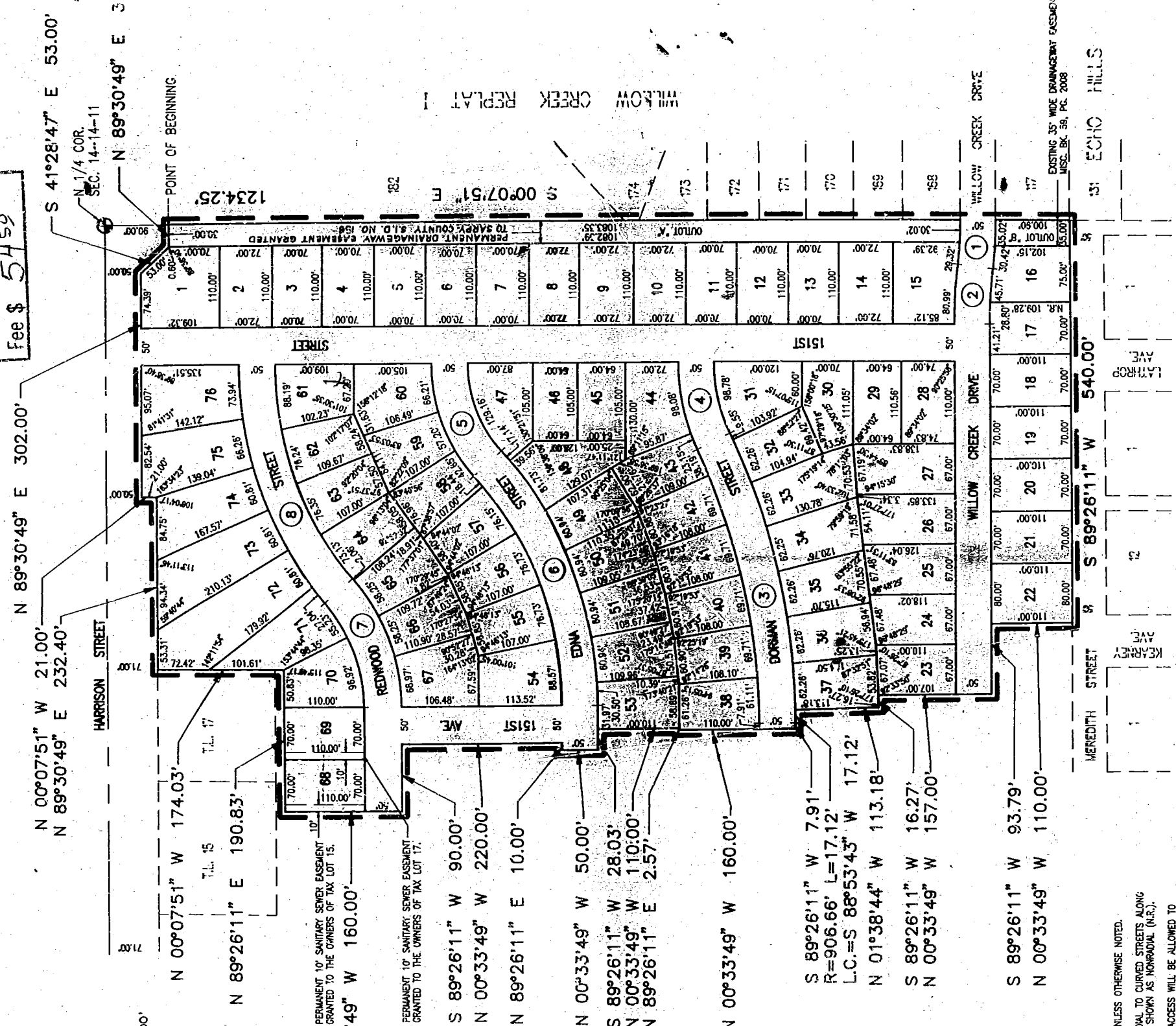
SEE ATTACHED FOR ADDITIONAL INDEXING:

Takeoff + Looked at and OK C Copy T T File

BIRCHFIELD

- 912 - 9648
- 93 - 4926
- 45 - 383
- 48 - 361
- 45 - 384
- 47 - 709
- 59 - 2008 (OLB)
- 89 - 15760 (R/O in Harrison St)
- 89 - 15758 (Adj to Harrison St)
- 89 - 15759 (Adj to Harrison St)
- 81 - 15761 (in Harrison St)
- 89 - 16005 (TL17)
- 89 - 16006 (R/O in Harrison St)
- 89 - 16007 (R/O in Harrison St)
- 92 - 9613 300 → (CST)
- 1136 - 113 S10 STAGE (12-15-94)
- 92 - 10197 (S10 STAGE)

Proof P. M.
 D.E. [Signature]
 Verify [Signature]
 Filmed [Signature]
 Checked [Signature]
 Fee \$ 54.50



CHALCO

SARPY COUNTY BUILDING INSPECTOR APPROVAL

This final plat of Birchfield was approved on this 12 day of MAR, 1992.

Sarpy County Building Inspector
[Signature]

SARPY COUNTY PLANNING COMMISSION APPROVAL

This final plat of Birchfield was approved by the County Planning Commission on this 12 day of MAR, 1992.

Q CURVE DATA

RADIUS	LENGTH	TANGENT	DELTA
485.70	62.37	31.24	07°21'34"
800.00	77.75	38.93	07°25'29"
881.66	389.19	197.82	25°17'30"
245.00	110.00	55.94	25°43'29"
200.00	147.61	77.35	42°17'13"
485.81	354.88	185.77	41°51'15"
240.05	169.84	88.65	40°32'15"
464.00	331.79	173.35	40°58'13"

UNLESS OTHERWISE NOTED, RADIAL TO CURVED STREETS ALONG S SHOWN AS NONRADIAL (N.R.).

ACCESS WILL BE ALLOWED TO LOT 1, AND LOTS 72, 73, 74, 75, 76, 77, 78, 79, 80, 81, 82, 83, 84, 85, 86, 87, 88, 89, 90, 91, 92, 93, 94, 95, 96, 97, 98, 99, 100, 101, 102, 103, 104, 105, 106, 107, 108, 109, 110, 111, 112, 113, 114, 115, 116, 117, 118, 119, 120, 121, 122, 123, 124, 125, 126, 127, 128, 129, 130, 131, 132, 133, 134, 135, 136, 137, 138, 139, 140, 141, 142, 143, 144, 145, 146, 147, 148, 149, 150, 151, 152, 153, 154, 155, 156, 157, 158, 159, 160, 161, 162, 163, 164, 165, 166, 167, 168, 169, 170, 171, 172, 173, 174, 175, 176, 177, 178, 179, 180, 181, 182, 183, 184, 185, 186, 187, 188, 189, 190, 191, 192, 193, 194, 195, 196, 197, 198, 199, 200, 201, 202, 203, 204, 205, 206, 207, 208, 209, 210, 211, 212, 213, 214, 215, 216, 217, 218, 219, 220, 221, 222, 223, 224, 225, 226, 227, 228, 229, 230, 231, 232, 233, 234, 235, 236, 237, 238, 239, 240, 241, 242, 243, 244, 245, 246, 247, 248, 249, 250, 251, 252, 253, 254, 255, 256, 257, 258, 259, 260, 261, 262, 263, 264, 265, 266, 267, 268, 269, 270, 271, 272, 273, 274, 275, 276, 277, 278, 279, 280, 281, 282, 283, 284, 285, 286, 287, 288, 289, 290, 291, 292, 293, 294, 295, 296, 297, 298, 299, 300, 301, 302, 303, 304, 305, 306, 307, 308, 309, 310, 311, 312, 313, 314, 315, 316, 317, 318, 319, 320, 321, 322, 323, 324, 325, 326, 327, 328, 329, 330, 331, 332, 333, 334, 335, 336, 337, 338, 339, 340, 341, 342, 343, 344, 345, 346, 347, 348, 349, 350, 351, 352, 353, 354, 355, 356, 357, 358, 359, 360, 361, 362, 363, 364, 365, 366, 367, 368, 369, 370, 371, 372, 373, 374, 375, 376, 377, 378, 379, 380, 381, 382, 383, 384, 385, 386, 387, 388, 389, 390, 391, 392, 393, 394, 395, 396, 397, 398, 399, 400, 401, 402, 403, 404, 405, 406, 407, 408, 409, 410, 411, 412, 413, 414, 415, 416, 417, 418, 419, 420, 421, 422, 423, 424, 425, 426, 427, 428, 429, 430, 431, 432, 433, 434, 435, 436, 437, 438, 439, 440, 441, 442, 443, 444, 445, 446, 447, 448, 449, 450, 451, 452, 453, 454, 455, 456, 457, 458, 459, 460, 461, 462, 463, 464, 465, 466, 467, 468, 469, 470, 471, 472, 473, 474, 475, 476, 477, 478, 479, 480, 481, 482, 483, 484, 485, 486, 487, 488, 489, 490, 491, 492, 493, 494, 495, 496, 497, 498, 499, 500, 501, 502, 503, 504, 505, 506, 507, 508, 509, 510, 511, 512, 513, 514, 515, 516, 517, 518, 519, 520, 521, 522, 523, 524, 525, 526, 527, 528, 529, 530, 531, 532, 533, 534, 535, 536, 537, 538, 539, 540, 541, 542, 543, 544, 545, 546, 547, 548, 549, 550, 551, 552, 553, 554, 555, 556, 557, 558, 559, 560, 561, 562, 563, 564, 565, 566, 567, 568, 569, 570, 571, 572, 573, 574, 575, 576, 577, 578, 579, 580, 581, 582, 583, 584, 585, 586, 587, 588, 589, 590, 591, 592, 593, 594, 595, 596, 597, 598, 599, 600, 601, 602, 603, 604, 605, 606, 607, 608, 609, 610, 611, 612, 613, 614, 615, 616, 617, 618, 619, 620, 621, 622, 623, 624, 625, 626, 627, 628, 629, 630, 631, 632, 633, 634, 635, 636, 637, 638, 639, 640, 641, 642, 643, 644, 645, 646, 647, 648, 649, 650, 651, 652, 653, 654, 655, 656, 657, 658, 659, 660, 661, 662, 663, 664, 665, 666, 667, 668, 669, 670, 671, 672, 673, 674, 675, 676, 677, 678, 679, 680, 681, 682, 683, 684, 685, 686, 687, 688, 689, 690, 691, 692, 693, 694, 695, 696, 697, 698, 699, 700, 701, 702, 703, 704, 705, 706, 707, 708, 709, 710, 711, 712, 713, 714, 715, 716, 717, 718, 719, 720, 721, 722, 723, 724, 725, 726, 727, 728, 729, 730, 731, 732, 733, 734, 735, 736, 737, 738, 739, 740, 741, 742, 743, 744, 745, 746, 747, 748, 749, 750, 751, 752, 753, 754, 755, 756, 757, 758, 759, 760, 761, 762, 763, 764, 765, 766, 767, 768, 769, 770, 771, 772, 773, 774, 775, 776, 777, 778, 779, 780, 781, 782, 783, 784, 785, 786, 787, 788, 789, 790, 791, 792, 793, 794, 795, 796, 797, 798, 799, 800, 801, 802, 803, 804, 805, 806, 807, 808, 809, 810, 811, 812, 813, 814, 815, 816, 817, 818, 819, 820, 821, 822, 823, 824, 825, 826, 827, 828, 829, 830, 831, 832, 833, 834, 835, 836, 837, 838, 839, 840, 841, 842, 843, 844, 845, 846, 847, 848, 849, 850, 851, 852, 853, 854, 855, 856, 857, 858, 859, 860, 861, 862, 863, 864, 865, 866, 867, 868, 869, 870, 871, 872, 873, 874, 875, 876, 877, 878, 879, 880, 881, 882, 883, 884, 885, 886, 887, 888, 889, 890, 891, 892, 893, 894, 895, 896, 897, 898, 899, 900, 901, 902, 903, 904, 905, 906, 907, 908, 909, 910, 911, 912, 913, 914, 915, 916, 917, 918, 919, 920, 921, 922, 923, 924, 925, 926, 927, 928, 929, 930, 931, 932, 933, 934, 935, 936, 937, 938, 939, 940, 941, 942, 943, 944, 945, 946, 947, 948, 949, 950, 951, 952, 953, 954, 955, 956, 957, 958, 959, 960, 961, 962, 963, 964, 965, 966, 967, 968, 969, 970, 971, 972, 973, 974, 975, 976, 977, 978, 979, 980, 981, 982, 983, 984, 985, 986, 987, 988, 989, 990, 991, 992, 993, 994, 995, 996, 997, 998, 999, 1000.

~~14-14-11~~ 14-14-11
 93-10751
 Emerald Oaks Birchfield CL 1-76, 05A, B
 NW 1/4 14-14-11
 NW 1/4 14-14-11
 NW 1/4 14-14-11

~~Document 3066~~
 or legend 40-128 ?

R 45-440
 45-383 affects E8' TL 15 NENW
 45-384 affects W8' TL 17 NENW
 R 147-2929 to NWB TL 14 NWNW

~~appears to be no survey~~
 Cont- 47-708 affects TL 14 NENW
 48-361 affects S1-S Emerald Oaks & S. 100-103 Birchfield
 R 154-3984 to Halcyon Farm Co.

~~appears to be adjoining section~~
 R 101-1519 to NUD TL 18B NWNW

~~appears to be~~
 " 89-05171 affects S of 31-41 Emerald Oaks 2nd
 " 89-05172 affects TL 2 SWNW
 " 89-13786 to S 156th St & S 44 Emerald Oaks
 13787 affects TL 5 SWNW
 R 89-15754

~~appears to be~~
 ROW Cont- 15758
 R 15759
 ROW Cont- 15760

" 15761
 R 16005 TL 17 SW
 ROW Cont- 16007
 " 16006 TL 17 S T NW

RCD 90-01980
 ROW Cont- 90-01980
 R 04023 TL 14 NWNW

Cont 04024
 ROW Cont- 04025
 R 92-09613 to CSI Emerald Oaks 2nd Emerald
 affects S 1/2 1/2
 affects S 1/2 1/2

PT 09614 to Mats NW
 see comp plo
 S 1/2 TL 1

DT

5-18-94

CSI

5-27-94

to

94-12003

Firstus Bank, WA, T&B

\$3,250,000

ffects covered also 2nd & TL1

~~_____~~

~~_____~~