

Birchfield

SID# 156

* Plat ^{92/}09648 Filed: 5-15-92

- Perpetual EASE to OPPD, US West & Cable T.V.

5' 8' 116

- Perpetual EASE to MUD, 5' abutting all streets

* ~~note~~ Check your lot for add'l EASEments !! *

* Decl. Cove ^{93/}04926 D: 3-8-93 F: 3-15-93

lots 1-76 ——— !!

- Contains certain restrictions on S/P

- Perpetual EASE to OPPD, US West & Cable T.V.
5' Front & Side and 8' rear B/L

- Perpetual EASE to MUD, 5' abutting all streets

- Notice of Potential telephone facilities charge

- Contains Provisions concerning Birchfield Homeowners Association, Inc., dues & assessments.

Birchfield

SID# 156

* Plat ⁹²/09648 Filed: 5-15-92

- Perpetual Ease to OPPD, US West & Cable T.V.

5/8/16

- Perpetual Ease to MUD, 5' abutting all streets

* note* Check your lot for add'l Easements !! *

* Decl. Cove ⁹³/04926 D: 3-8-93 F: 3-15-93

Lots 1-76 ———

- Contains certain restrictions on S/P

- Perpetual Ease to OPPD, US West & Cable T.V.
5' Front & Side and 8' rear B/L

- Perpetual Ease to MUD, 5' abutting all streets

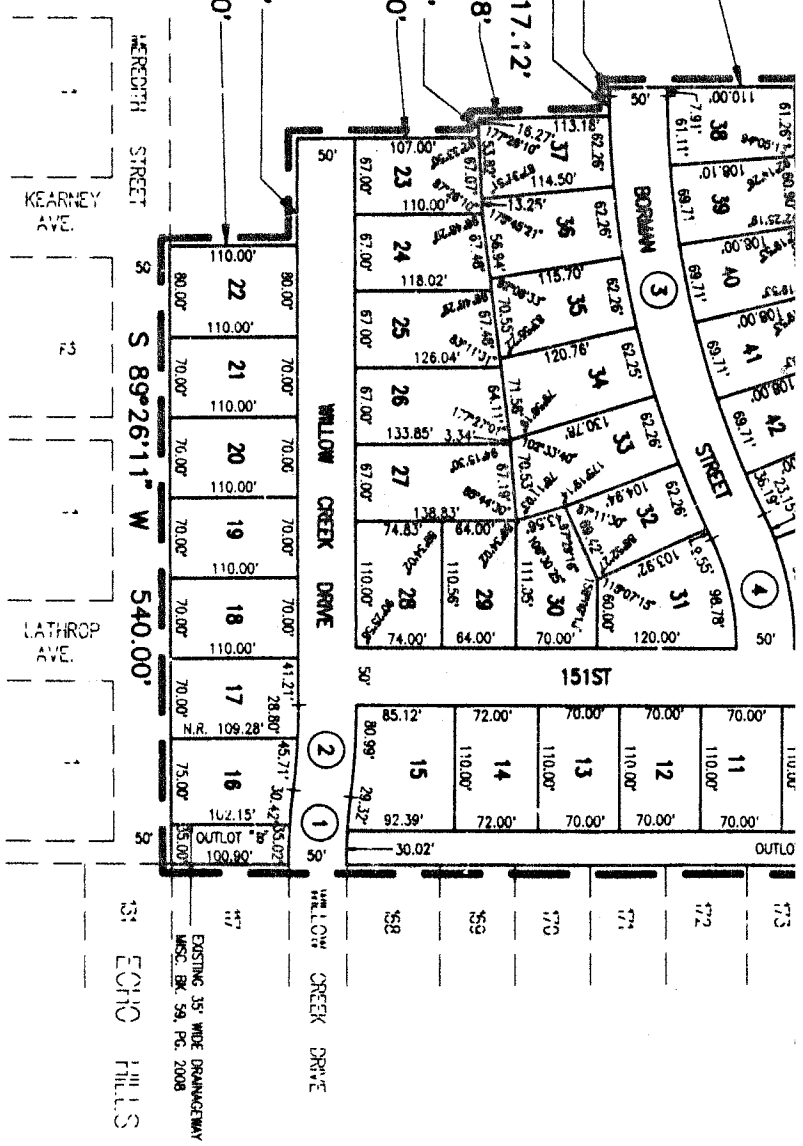
- Notice of Potential telephone facilities charge

- Contains Provisions concerning Birchfield Homeowners Association, Inc., dues & assessments.

UNPLATTED

N 00°33'49" W 160.00'

S 89°26'11" W 7.91'
 R=906.66' L=17.12'
 L.C.=S 88°53'45" W 17.12'
 N 01°38'44" W 113.18'
 S 89°26'11" W 16.27'
 N 00°33'49" W 157.00'



- NOTES:
1. ALL ANGLES ARE 90° UNLESS OTHERWISE NOTED.
 2. ALL LOT LINES ARE ROUNDED TO CURVED STREETS ALONG FRONT LOT LINES UNLESS SHOWN AS NON-CURVED (N.R.).
 3. NO DIRECT VEHICULAR ACCESS WILL BE ALLOWED TO HARRISON STREET FROM LOT 1, AND LOTS 72, 73, 74, 75, 76; TO MEREDITH STREET FROM LOTS 16, 17, 18, 19, 20, 21, 22.

☞ CURVE DATA

CURVE	RADIUS	LENGTH	TANGENT	DELTA
1	485.70'	62.37'	31.24'	07°21'34"
2	600.00'	77.75'	38.93'	07°25'29"
3	881.86'	389.19'	197.82'	29°17'30"
4	245.00'	110.00'	55.94'	29°43'29"
5	200.00'	147.61'	77.35'	42°17'15"
6	485.81'	354.88'	185.77'	41°51'15"
7	240.05'	169.84'	88.65'	40°32'15"
8	464.00'	331.79'	173.35'	40°58'13"

SARPY COUNTY BUILDING INSPECTOR APPROVAL

This final plat of Birchfield was approved on this 18 day of MAR, 1992.

Sarpy County Building Inspector

SARPY COUNTY PLANNING COMMISSION APPROVAL

This final plat of Birchfield was approved by the County Planning Commission on this 7 day of MARCH, 1992.

Chairman, Sarpy County Planning Commission

589