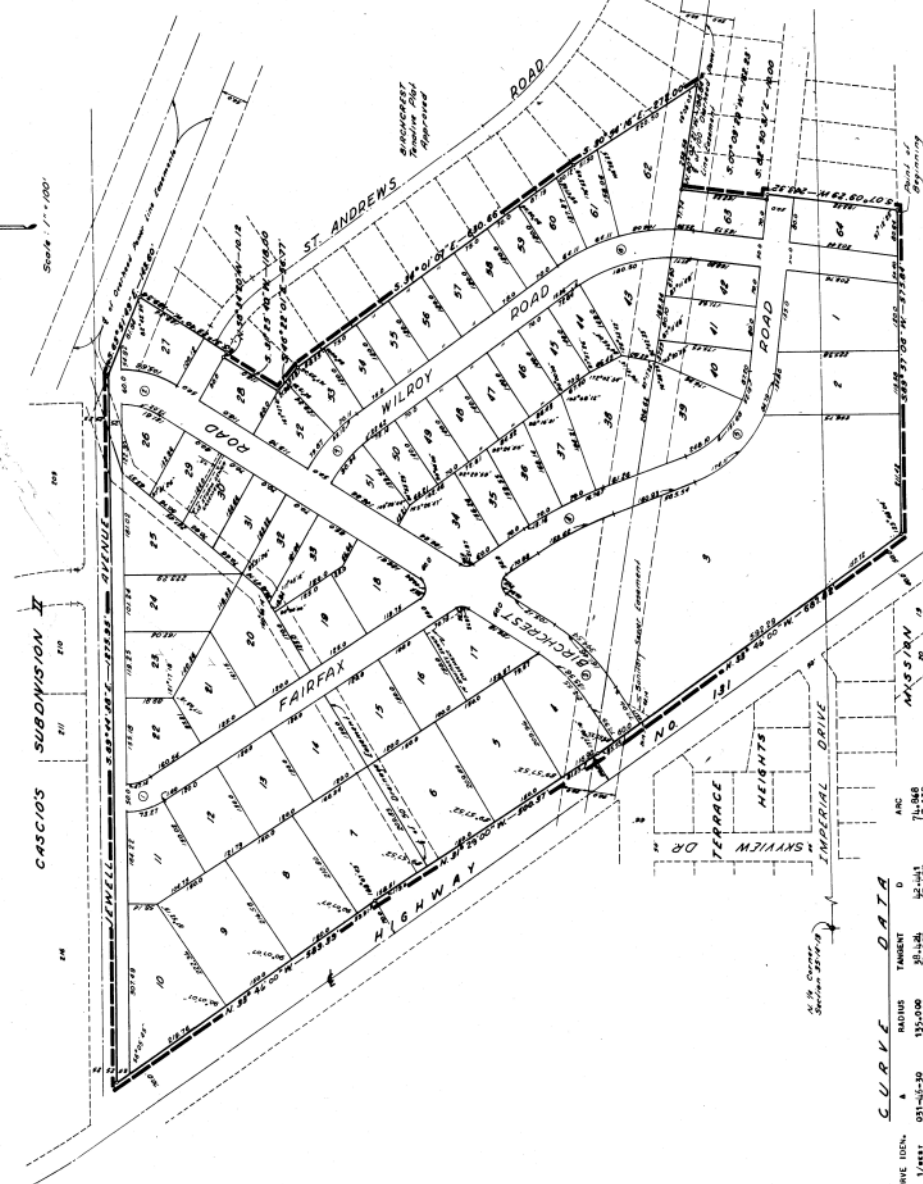


BIRCHCREST

A SUBDIVISION LOCATED IN A PART OF THE S.E. 1/4 OF SECTION 35, TOWNSHIP 14 NORTH, RANGE 13 EAST OF THE 6TH P.M., SHERIDAN COUNTY, NEBRASKA, MORE PARTICULARLY DESCRIBED AS FOLLOWS:

(Scale 1 inch = 40 Feet)



CURVE DATA

CHORD IDEN.	A	RADIUS	TANGENT	ARC
1/1/1/1	05'-10.15	12'-00.00	21'-11.77	174.192
2/1/1/1	05'-10.15	12'-00.00	21'-11.77	174.192
3/1/1/1	05'-10.15	12'-00.00	21'-11.77	174.192
4/1/1/1	05'-10.15	12'-00.00	21'-11.77	174.192
5/1/1/1	05'-10.15	12'-00.00	21'-11.77	174.192
6/1/1/1	05'-10.15	12'-00.00	21'-11.77	174.192
7/1/1/1	05'-10.15	12'-00.00	21'-11.77	174.192
8/1/1/1	05'-10.15	12'-00.00	21'-11.77	174.192
9/1/1/1	05'-10.15	12'-00.00	21'-11.77	174.192
10/1/1/1	05'-10.15	12'-00.00	21'-11.77	174.192
11/1/1/1	05'-10.15	12'-00.00	21'-11.77	174.192
12/1/1/1	05'-10.15	12'-00.00	21'-11.77	174.192
13/1/1/1	05'-10.15	12'-00.00	21'-11.77	174.192
14/1/1/1	05'-10.15	12'-00.00	21'-11.77	174.192
15/1/1/1	05'-10.15	12'-00.00	21'-11.77	174.192
16/1/1/1	05'-10.15	12'-00.00	21'-11.77	174.192
17/1/1/1	05'-10.15	12'-00.00	21'-11.77	174.192
18/1/1/1	05'-10.15	12'-00.00	21'-11.77	174.192
19/1/1/1	05'-10.15	12'-00.00	21'-11.77	174.192
20/1/1/1	05'-10.15	12'-00.00	21'-11.77	174.192
21/1/1/1	05'-10.15	12'-00.00	21'-11.77	174.192
22/1/1/1	05'-10.15	12'-00.00	21'-11.77	174.192
23/1/1/1	05'-10.15	12'-00.00	21'-11.77	174.192
24/1/1/1	05'-10.15	12'-00.00	21'-11.77	174.192
25/1/1/1	05'-10.15	12'-00.00	21'-11.77	174.192
26/1/1/1	05'-10.15	12'-00.00	21'-11.77	174.192
27/1/1/1	05'-10.15	12'-00.00	21'-11.77	174.192
28/1/1/1	05'-10.15	12'-00.00	21'-11.77	174.192
29/1/1/1	05'-10.15	12'-00.00	21'-11.77	174.192
30/1/1/1	05'-10.15	12'-00.00	21'-11.77	174.192
31/1/1/1	05'-10.15	12'-00.00	21'-11.77	174.192
32/1/1/1	05'-10.15	12'-00.00	21'-11.77	174.192
33/1/1/1	05'-10.15	12'-00.00	21'-11.77	174.192
34/1/1/1	05'-10.15	12'-00.00	21'-11.77	174.192
35/1/1/1	05'-10.15	12'-00.00	21'-11.77	174.192
36/1/1/1	05'-10.15	12'-00.00	21'-11.77	174.192
37/1/1/1	05'-10.15	12'-00.00	21'-11.77	174.192
38/1/1/1	05'-10.15	12'-00.00	21'-11.77	174.192
39/1/1/1	05'-10.15	12'-00.00	21'-11.77	174.192
40/1/1/1	05'-10.15	12'-00.00	21'-11.77	174.192
41/1/1/1	05'-10.15	12'-00.00	21'-11.77	174.192
42/1/1/1	05'-10.15	12'-00.00	21'-11.77	174.192
43/1/1/1	05'-10.15	12'-00.00	21'-11.77	174.192
44/1/1/1	05'-10.15	12'-00.00	21'-11.77	174.192
45/1/1/1	05'-10.15	12'-00.00	21'-11.77	174.192
46/1/1/1	05'-10.15	12'-00.00	21'-11.77	174.192
47/1/1/1	05'-10.15	12'-00.00	21'-11.77	174.192
48/1/1/1	05'-10.15	12'-00.00	21'-11.77	174.192
49/1/1/1	05'-10.15	12'-00.00	21'-11.77	174.192
50/1/1/1	05'-10.15	12'-00.00	21'-11.77	174.192
51/1/1/1	05'-10.15	12'-00.00	21'-11.77	174.192
52/1/1/1	05'-10.15	12'-00.00	21'-11.77	174.192
53/1/1/1	05'-10.15	12'-00.00	21'-11.77	174.192
54/1/1/1	05'-10.15	12'-00.00	21'-11.77	174.192
55/1/1/1	05'-10.15	12'-00.00	21'-11.77	174.192
56/1/1/1	05'-10.15	12'-00.00	21'-11.77	174.192
57/1/1/1	05'-10.15	12'-00.00	21'-11.77	174.192
58/1/1/1	05'-10.15	12'-00.00	21'-11.77	174.192
59/1/1/1	05'-10.15	12'-00.00	21'-11.77	174.192
60/1/1/1	05'-10.15	12'-00.00	21'-11.77	174.192
61/1/1/1	05'-10.15	12'-00.00	21'-11.77	174.192
62/1/1/1	05'-10.15	12'-00.00	21'-11.77	174.192
63/1/1/1	05'-10.15	12'-00.00	21'-11.77	174.192
64/1/1/1	05'-10.15	12'-00.00	21'-11.77	174.192
65/1/1/1	05'-10.15	12'-00.00	21'-11.77	174.192
66/1/1/1	05'-10.15	12'-00.00	21'-11.77	174.192
67/1/1/1	05'-10.15	12'-00.00	21'-11.77	174.192
68/1/1/1	05'-10.15	12'-00.00	21'-11.77	174.192
69/1/1/1	05'-10.15	12'-00.00	21'-11.77	174.192
70/1/1/1	05'-10.15	12'-00.00	21'-11.77	174.192
71/1/1/1	05'-10.15	12'-00.00	21'-11.77	174.192
72/1/1/1	05'-10.15	12'-00.00	21'-11.77	174.192
73/1/1/1	05'-10.15	12'-00.00	21'-11.77	174.192
74/1/1/1	05'-10.15	12'-00.00	21'-11.77	174.192
75/1/1/1	05'-10.15	12'-00.00	21'-11.77	174.192
76/1/1/1	05'-10.15	12'-00.00	21'-11.77	174.192
77/1/1/1	05'-10.15	12'-00.00	21'-11.77	174.192
78/1/1/1	05'-10.15	12'-00.00	21'-11.77	174.192
79/1/1/1	05'-10.15	12'-00.00	21'-11.77	174.192
80/1/1/1	05'-10.15	12'-00.00	21'-11.77	174.192
81/1/1/1	05'-10.15	12'-00.00	21'-11.77	174.192
82/1/1/1	05'-10.15	12'-00.00	21'-11.77	174.192
83/1/1/1	05'-10.15	12'-00.00	21'-11.77	174.192
84/1/1/1	05'-10.15	12'-00.00	21'-11.77	174.192
85/1/1/1	05'-10.15	12'-00.00	21'-11.77	174.192
86/1/1/1	05'-10.15	12'-00.00	21'-11.77	174.192
87/1/1/1	05'-10.15	12'-00.00	21'-11.77	174.192
88/1/1/1	05'-10.15	12'-00.00	21'-11.77	174.192
89/1/1/1	05'-10.15	12'-00.00	21'-11.77	174.192
90/1/1/1	05'-10.15	12'-00.00	21'-11.77	174.192
91/1/1/1	05'-10.15	12'-00.00	21'-11.77	174.192
92/1/1/1	05'-10.15	12'-00.00	21'-11.77	174.192
93/1/1/1	05'-10.15	12'-00.00	21'-11.77	174.192
94/1/1/1	05'-10.15	12'-00.00	21'-11.77	174.192
95/1/1/1	05'-10.15	12'-00.00	21'-11.77	174.192
96/1/1/1	05'-10.15	12'-00.00	21'-11.77	174.192
97/1/1/1	05'-10.15	12'-00.00	21'-11.77	174.192
98/1/1/1	05'-10.15	12'-00.00	21'-11.77	174.192
99/1/1/1	05'-10.15	12'-00.00	21'-11.77	174.192
100/1/1/1	05'-10.15	12'-00.00	21'-11.77	174.192

SUBDIVISION CERTIFICATE

I HEREBY CERTIFY THAT I HAVE SURVEYED AND SIZED WITH IRON PINS, ALL CORNERS OF ALL LOTS, STREETS, ALLEYS, ANGLE POINTS AND ENDS OF ALL CURVES, IN BIRCHCREST, AN ADDITION IN A PART OF THE NORTHWEST QUARTER OF SECTION 35, AND THE SOUTHWEST QUARTER OF SECTION 36, TOWNSHIP 14 NORTH, RANGE 13 EAST OF THE 6TH P.M., SHERIDAN COUNTY, NEBRASKA, MORE PARTICULARLY DESCRIBED AS FOLLOWS:

COMMENCING AT THE NORTHWEST CORNER OF SAID SECTION 35; THENCE, SOUTH 89° 57' 30" WEST ALONG THE OLD CLAIM LINE A DISTANCE OF 744.73 FEET TO THE POINT OF BEGINNING; THENCE, CONTINUING SOUTH 89° 57' 30" WEST ALONG THE OLD CLAIM LINE A DISTANCE OF 375.84 FEET; THENCE, NORTH 22° 01' 00" EAST A DISTANCE OF 153.45 FEET; THENCE, SOUTH 89° 57' 30" WEST ALONG THE OLD CLAIM LINE A DISTANCE OF 682.80 FEET; THENCE, NORTH 17° 31' 00" WEST ALONG THE EASTERN RIGHT-OF-WAY LINE OF STATE HIGHWAY NO. 131, A DISTANCE OF 682.80 FEET; THENCE, NORTH 17° 31' 00" WEST ALONG THE EASTERN RIGHT-OF-WAY LINE OF STATE HIGHWAY NO. 131 A DISTANCE OF 140.37 FEET; THENCE, NORTH 17° 31' 00" WEST ALONG THE SOUTHWEST CORNER OF SAID SECTION 35 A DISTANCE OF 1274.50 FEET; THENCE, SOUTH 65° 21' 00" EAST A DISTANCE OF 143.50 FEET; THENCE, SOUTH 17° 31' 00" WEST A DISTANCE OF 118.00 FEET; THENCE, SOUTH 46° 00' FEET; THENCE, NORTH 88° 34' 30" WEST A DISTANCE OF 16.12 FEET; THENCE, SOUTH 31° 25' 40" WEST A DISTANCE OF 180.46 FEET; THENCE, SOUTH 10° 54' 10" EAST A DISTANCE OF 372.00 FEET; THENCE, NORTH 88° 02' 21" WEST A DISTANCE OF 184.84 FEET; THENCE, SOUTH 07° 29' 20" WEST A DISTANCE OF 162.23 FEET; THENCE, SOUTH 89° 57' 30" WEST A DISTANCE OF 10.00 FEET; THENCE, SOUTH 07° 29' 20" WEST A DISTANCE OF 243.32 FEET TO THE POINT OF BEGINNING.

DATE: March 1, 1962

RECORDED AND INDEXED BY: [Signature]

DECLARATION

KNOW ALL MEN BY THESE PRESENTS: THAT SHERIDAN SALES, INC., A NEBRASKA CORPORATION, A. JOE DENNIS, PRESIDENT AND WOODMAN HONES, INC., A NEBRASKA CORPORATION, A. JOE DENNIS, PRESIDENT, BEING SOLE OWNERS AND PROPRIETORS OF THE LAND DESCRIBED IN THE SURVEYOR'S CERTIFICATE AND UNPAID WITH- IN THIS PLAT HAVE CAUSED THE SAME TO BE SUBDIVIDED INTO LOTS AND STREETS, SAID SUBDIVISION TO BE KNOWN AS BIRCHCREST, THE LOTS NUMBERED AS SHOWN AND HEREBY OFFERED TO THE PUBLIC, FOR PUBLIC USE, THE STREETS SHOWN HEREIN, AND ALSO DESIGNATE AN EASEMENT TO CONSTRUCT AND MAINTAIN TELEPHONE AND ELECTRIC UTILITIES ALONG, ACROSS, OVER AND UNDER THE REAR AND SIDE HIGHWAY LINES OF EACH LOT, TOGETHER WITH ANY NECESSARY DRAINAGE, THE ABOVE ON THE SURVEYING SUBDIVISION LOCATED IN PARTS OF SECTIONS 35, AND 36, TOWNSHIP 14 NORTH, RANGE 13 EAST, AS APPEARS ON THIS PLAT IN ACCORDANCE WITH FREE CONSENT AND IN ACCORDANCE WITH THE BEARING OF THE UNRECORDED OWNERS AND PROPRIETORS.

IN WITNESS WHEREOF WE DO HEREBY SET OUR HANDS THIS 8 DAY OF March, A.D., 1962.

SHERIDAN SALES, INC.
A. JOE DENNIS, PRESIDENT
W. J. HUGHES, SECRETARY

WOODMAN HONES, INC.
A. JOE DENNIS, PRESIDENT
W. J. HUGHES, SECRETARY

STATE OF NEBRASKA
COUNTY OF SHERIDAN
ON THIS 8 DAY OF March, A.D., 1962.
I, [Signature], COUNTY CLERK, DO HEREBY CERTIFY THAT THE RECORDS OF AN OFFICE SHOW NO TAXES DUE OR DELINQUENT UPON THE PROPERTY DESCRIBED IN THE SURVEYOR'S CERTIFICATE AS OF THIS 18 DAY OF April, A.D., 1962.

APPROVED BY COUNTY SURVEYOR:
[Signature] COUNTY SURVEYOR

APPROVAL OF BELLEVUE CITY ENGINEERS:
[Signature] BELLEVUE CITY ENGINEERS

THIS PLAT OF BIRCHCREST, IN SHERIDAN COUNTY, NEBRASKA, AS DESCRIBED IN THE SURVEYOR'S CERTIFICATE, IS HEREBY APPROVED BY ME THIS 13 DAY OF March, A.D., 1962.

BELLEVUE PLANNING COMMISSION
THIS SUBDIVISION OF BIRCHCREST WAS APPROVED BY THE BELLEVUE PLANNING COMMISSION THIS 8 DAY OF March, A.D., 1962.

BELLEVUE CITY COUNCIL APPROVAL
THIS SUBDIVISION OF BIRCHCREST WAS APPROVED AND ACCEPTED BY THE CITY COUNCIL OF THE CITY OF BELLEVUE, NEBRASKA ON THIS 13 DAY OF March, A.D., 1962, IN ACCORDANCE WITH THE STATE STATUTES OF NEBRASKA.

ATTEST:
[Signature]

FILED FOR RECORD IN SHERIDAN COUNTY RECORDS, PAGE 4-113-13 AT 1:00 P.M.
AND RECORDED IN BOOK 8-10-1, PAGE 13-10-10 SHERIDAN COUNTY CLERK'S OFFICE