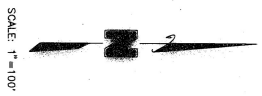
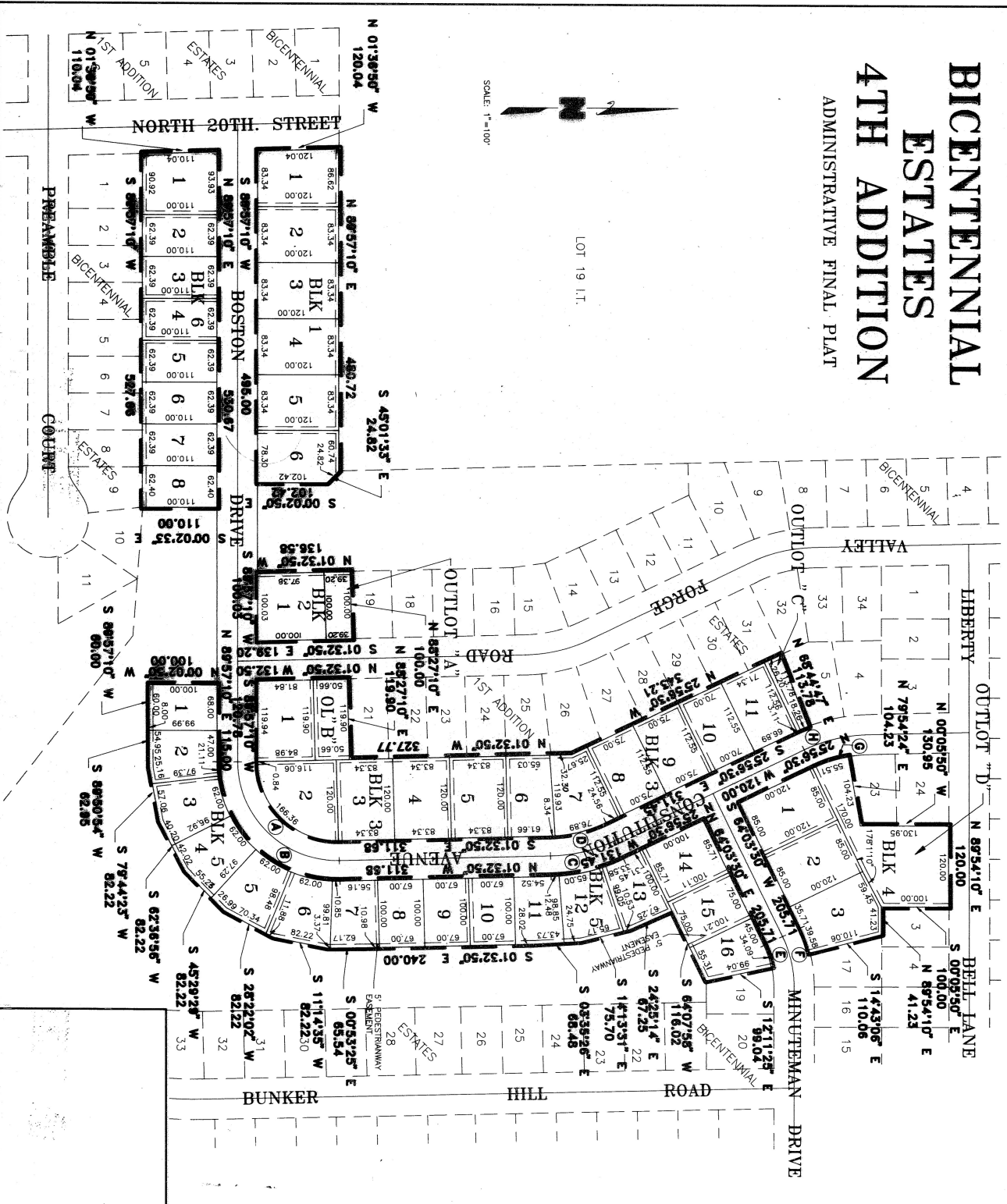


# BICENTENNIAL ESTATES 4TH ADDITION

ADMINISTRATIVE FINAL PLAT



LOT 19 I.T.



**CURVE DATA**

- A.  $\Delta=91.1000^\circ$   
R=185.45  
L=18.20  
LC=18.20
- B.  $\Delta=91.1000^\circ$   
R=185.45  
L=18.20  
LC=18.20
- C.  $\Delta=24.2340^\circ$   
R=56.46  
L=88.17  
LC=88.17
- D.  $\Delta=24.2340^\circ$   
R=56.46  
L=88.17  
LC=88.17
- E.  $\Delta=117.324^\circ$   
R=28.07  
L=17.17  
LC=34.09
- F.  $\Delta=117.324^\circ$   
R=28.07  
L=17.17  
LC=34.09
- G.  $\Delta=151.5054^\circ$   
R=261.31  
L=10.70  
LC=21.37
- H.  $\Delta=151.5054^\circ$   
R=261.31  
L=10.70  
LC=21.37

SHEET 1 OF 2

