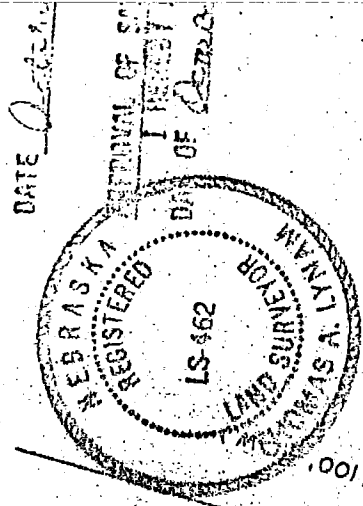


# BELLEVUE ST

A REPLAT OF THE  
13, LOCATED IN THE  
T14N, R16E, OF THE  
COUNTY, NEBRASKA.

COUNTY TREASURER  
THIS IS TO  
BEAT THE PR  
EXHIBITED WITH

WEST LINE SEC. 23-14-13



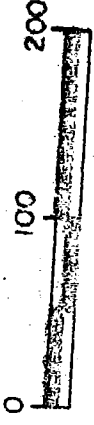
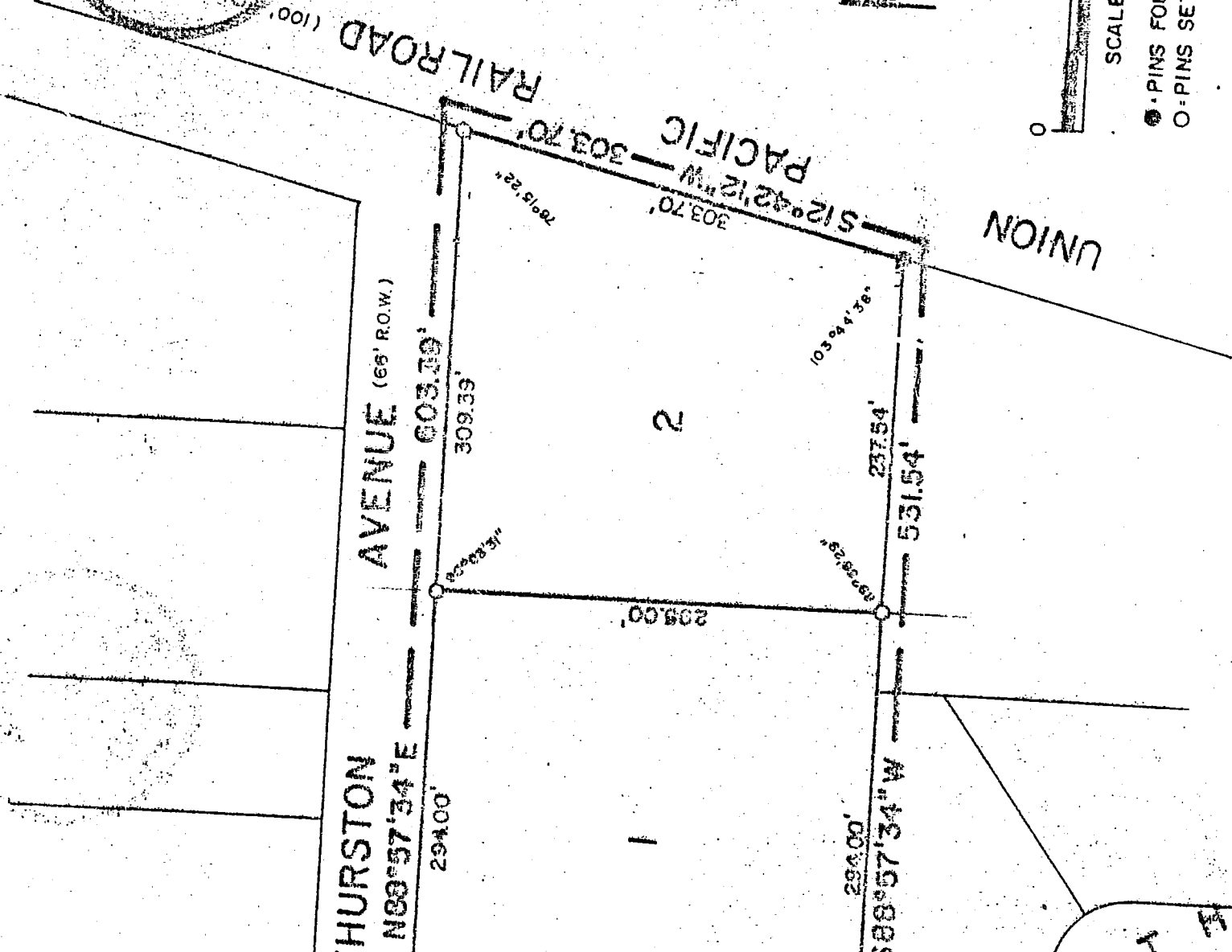
DATE *12-12-89*

APPROVAL OF BELLE  
DAY OF *DECEMBER*  
WITHIN *30* DAYS

APPROVAL OF BELLE  
DAY OF *DECEMBER*  
WITHIN *30* DAYS

APPROVAL OF BELLE  
DAY OF *DECEMBER*  
WITHIN *30* DAYS

APPROVAL OF BELLE  
DAY OF *DECEMBER*  
WITHIN *30* DAYS



SCALE 1" = 100'

- PINS FOUND 3/4" PIPE
- PINS SET 3/4" PIPE

FILE # 650  
2554  
2084

12-12-89 3:05 PM 89-17222

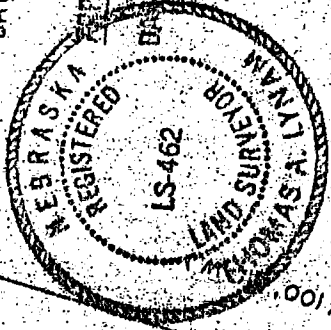
*Ray J. Dand...*

REGISTER OF DEEDS SEBET COUNTY NE

INC.  
ANNETA  
MA

COUNTY TREASURER  
THIS IS  
AGAINST THE PUBLIC INTEREST  
ENFORCED WITHOUT

DATE October 15



APPROVAL OF BELLEVUE COUNTY REGISTER OF SURVEYOR  
I HEREBY APPROVE  
DAY OF October

APPROVAL OF BELLEVUE COUNTY REGISTER OF SURVEYOR  
I HEREBY APPROVE  
DAY OF October  
WITHIN 30 DAYS OF THE

APPROVAL OF BELLEVUE COUNTY REGISTER OF SURVEYOR  
I HEREBY APPROVE  
DAY OF October

APPROVAL OF BELLEVUE COUNTY REGISTER OF SURVEYOR  
I HEREBY APPROVE  
DAY OF December

LINE SEC. 23-14-13

RAILROAD (100'

RSTON AVENUE (66' R.O.W.)

$30^{\circ}57'34''$  E

603.39'

294.00'

309.38'

299.00'

603.39'

299.00'

309.38'

299.00'

309.38'

299.00'

309.38'

299.00'

309.38'

299.00'

309.38'

299.00'

309.38'

299.00'

309.38'

299.00'

309.38'

299.00'

309.38'

299.00'

309.38'

299.00'

309.38'

299.00'

309.38'

299.00'

309.38'

299.00'

309.38'

299.00'

309.38'

299.00'

309.38'

299.00'

309.38'

299.00'

309.38'

299.00'

309.38'

299.00'

309.38'

299.00'

309.38'

299.00'

309.38'

299.00'

309.38'

299.00'

309.38'

299.00'

309.38'

299.00'

309.38'

299.00'

309.38'

299.00'

309.38'

299.00'

309.38'

299.00'

309.38'

299.00'

309.38'

299.00'

309.38'

299.00'

309.38'

299.00'

309.38'

299.00'

309.38'

299.00'

309.38'

299.00'

309.38'

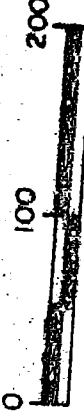
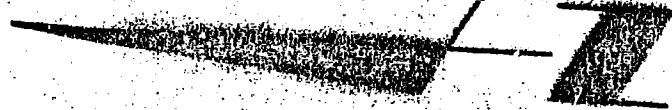
299.00'

309.38'

299.00'

309.38'

299.00'



SCALE 1" = 100'

- PINS FOUND 3/4" PIPE
- PINS SET 3/4" PIPE

APPROVED BY  
COMMISSIONER  
REGISTERED SURVEYOR  
FILED

FILED FOR RECORD 12-18-89 AT 3:05 PM 89-17272

*Ray J. Doud*

650

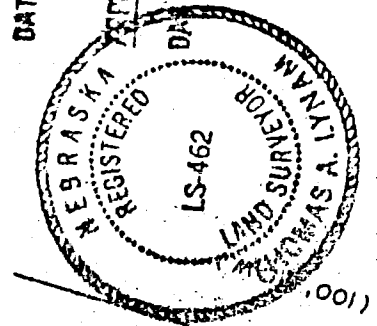
VC.

REGISTER OF DEEDS SHERIDAN COUNTY NE

14th DISTRICT OF  
COUNTY, NEBRASKA

COUNTY OF  
STATE OF NEBRASKA  
AGAINST THE  
EFFECTS OF

DEPT LINE SEC. 23-14-13

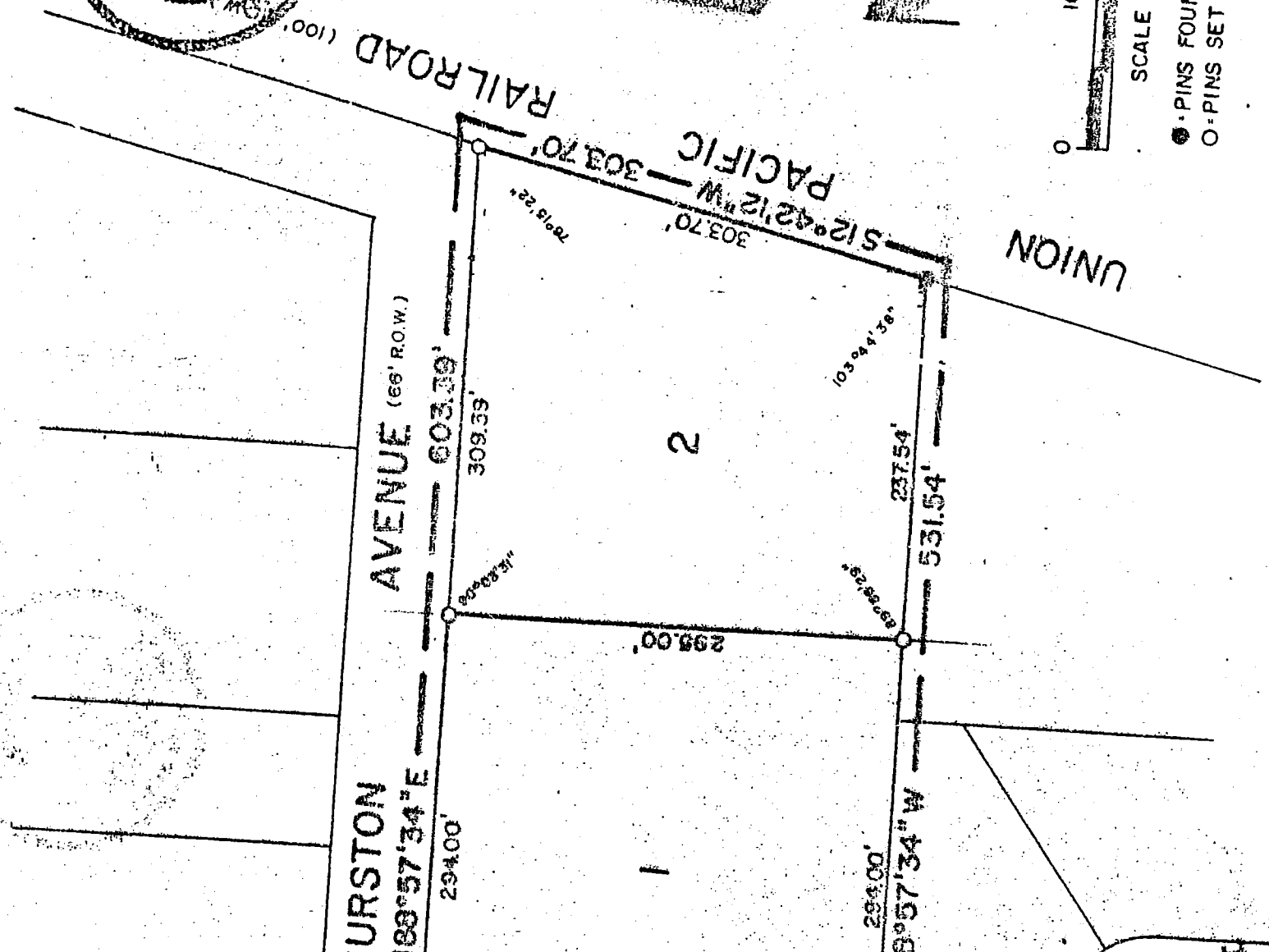


DATE *October 19, 1934*  
APPROVAL OF BELLEVUE  
I HEREBY APPROVE  
OF *[Signature]*

APPROVAL OF BELLEVUE  
I HEREBY APPROVE  
DAY OF *October*  
WITHIN 30 DAYS

APPROVAL OF BELLEVUE  
I HEREBY APPROVE  
DAY OF *October*

APPROVAL OF BELLEVUE  
I HEREBY APPROVE  
DAY OF *December*

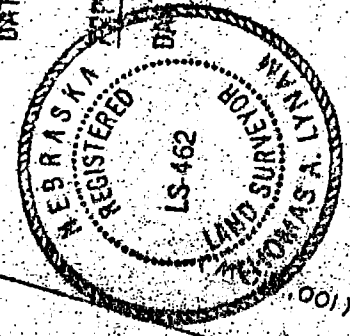


*[Signature]*  
LAND SURVEYOR  
STATE OF NEBRASKA

COUNTY TREASURER  
THIS IS  
AGAINST THE  
ENROLLMENT WITH

WEST LINE SEC. 23-14-13

DATE *Oct 27*



APPROVAL OF BEL  
DAY OF *Oct*  
WITHIN 30 DAYS

APPROVAL OF BEL  
DAY OF *Oct*  
WITHIN 30 DAYS

APPROVAL OF BEL  
DAY OF *Oct*  
WITHIN 30 DAYS

RAILROAD (100')

THURSTON AVENUE (66' R.O.W.)

N89°57'34"E

294.00'

603.39'

309.39'

PACIFIC RAILROAD

S12°42'12"W

303.70'

303.70'

103°04'36"

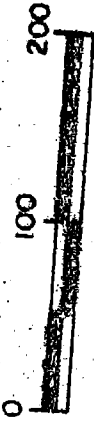
237.54'

531.54'

S88°57'34"W

294.00'

UNION



SCALE 1" = 100'

- PINS FOUND 3/4" PIPE
- PINS SET 3/4" PIPE

SEARCHED  
INDEXED  
SERIALIZED  
FILED

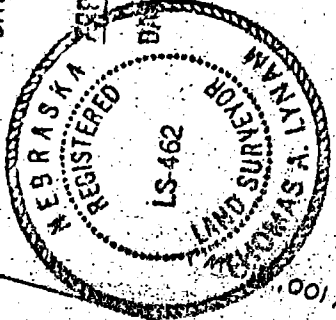
FILED FOR RECORD 12-12-89 AT 3:05 PM 89-17272

COUNTY, NEBRASKA

COUNTY THIS IS AGAINST THE ESCRAGED W

SEC. 23-14-13

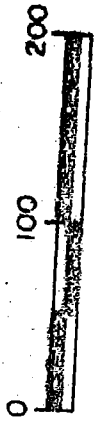
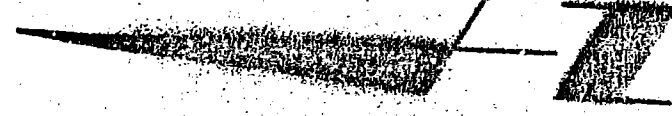
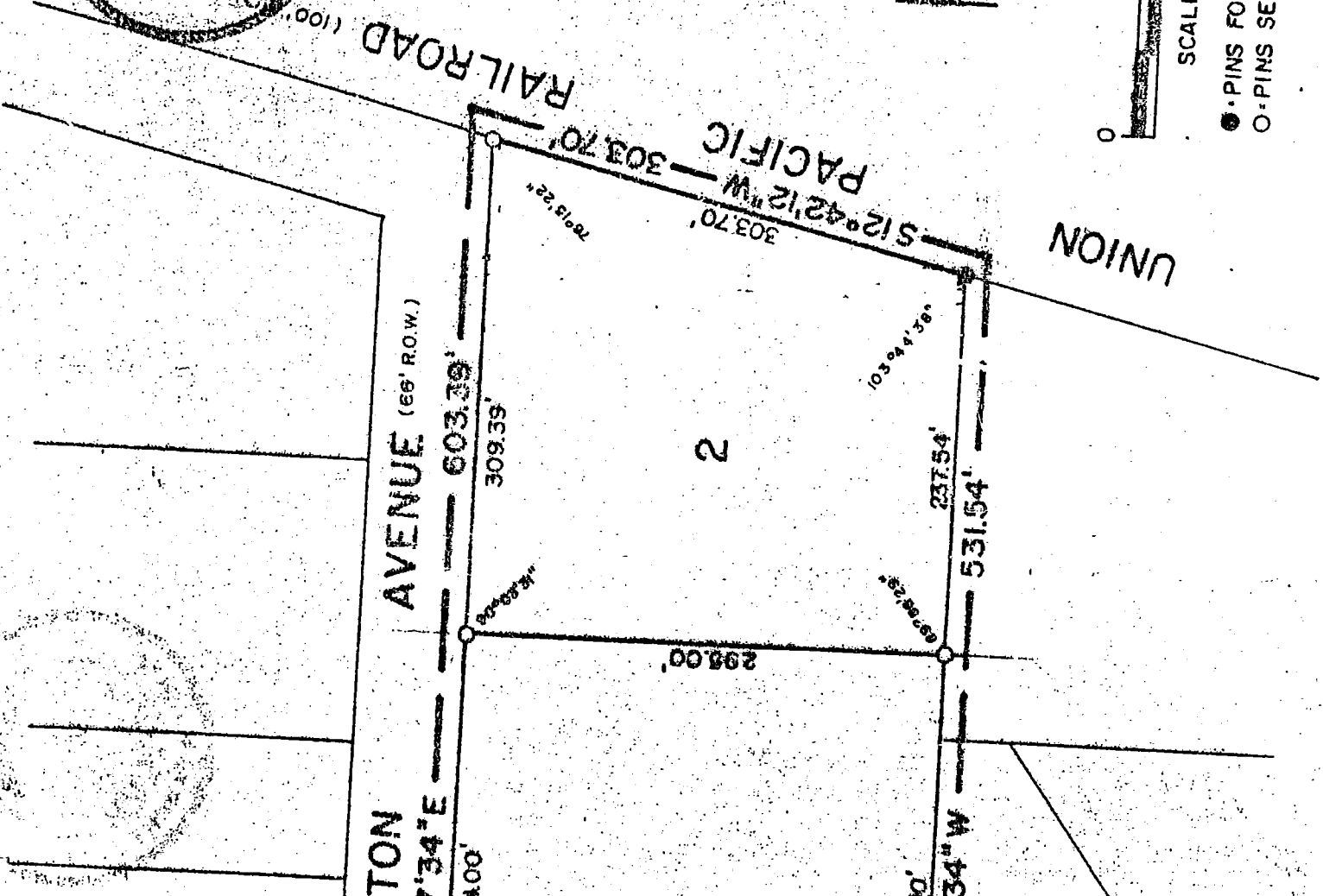
DATE October 1989  
APPROVAL OF SURVEYOR  
I HEREBY APPROVE  
DAY OF October 1989



APPROVAL OF BELLEVEUE  
I HEREBY APPROVE  
DAY OF October  
WITHIN 90 DAYS OF THE

APPROVAL OF BELLEVEUE  
I HEREBY APPROVE  
DAY OF October

APPROVAL OF BELLEVEUE CI  
I HEREBY APPROVE  
DAY OF October



SCALE 1" = 100'  
● PINS FOUND 3/4" PIPE  
○ PINS SET 3/4" PIPE

PLAT BY  
CHANGED  
GRANTED

FILED IN RECORDS 12-12-89 AT 3:05 PM 89-17273

MEYING, INC.

NE SEC. 23-14-13

THURSTON

AVENUE (66' R.O.W.)

RAILROAD (100'

UNION

PACIFIC

N00°58'55"W — 295.00'

N88°57'34"E — 294.00'

294.00'

603.39'

309.39'

295.00'

S88°57'34"W — 294.00'

294.00'

531.54'

237.54'

303.70'

303.70'

S12°42'12"W

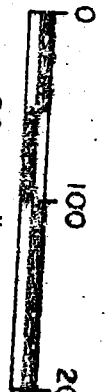
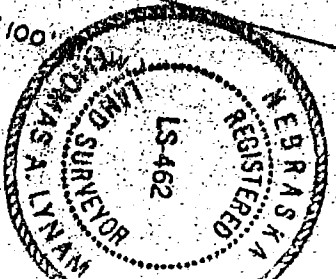
78°15'22"

90°03'31"

90°03'31"

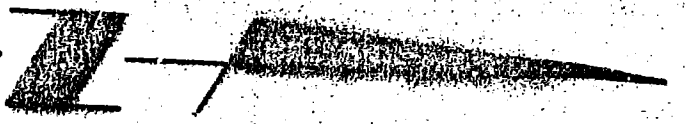
89°58'29"

103°44'38"



SCALE 1" = 100'

- PINS FOUND 3/4" PIPE
- PINS SET 3/4" PIPE



AP DA AP DA AP DA

PREPARED BY  
 MEYING, INC.  
 12-12-89  
 3:05 PM  
 89-172

FILED FOR RECORD  
 12-12-89  
 3:05 PM  
 89-172

REGISTERED PROFESSIONAL LAND SURVEYOR