

NOTICE

METROPOLITAN UTILITIES DISTRICT

to

Job. No. WC-C 2948

WHOM IT MAY CONCERN:

Notice is hereby given that Metropolitan Utilities District has, under its construction order procedure, installed a water main, in the following streets:

On 38th Street between Giles Road and a point 480 feet south of Giles Road,

Sarpy  
in Omaha, ~~Dodge~~ Sarpy County, Nebraska, or adjoining said city, abutting the lots or parcels of land described below:

Lots 1, 2, 3 and 4, Block 4, Potter and George Company's Subdivision

FILED FOR RECORD IN SARPY COUNTY NEBR. Dec 2 1963 AT 9 O'CLOCK A.M.  
AND RECORDED IN BOOK 32 OF Rec. PAGE 586 Alfred Benker REGISTER OF DEEDS 175

A connection charge of \$ 3.44 per foot will be made as to each of said lots or parcels of land whose owners apply for, and receive, service from such main. This charge is in lieu of an assessment which would have been made if said main had been installed under the statutory procedure for main extensions. The connection charge may be paid in full, or in installments, as provided by the Rules and Regulations of Metropolitan Utilities District.

When the connection charge has been paid in full by the owner of a lot, a receipt will be issued and may be recorded by him. Inquiry may be made of the New "Services" Section of Metropolitan Utilities District as to whether a connection to said main has been made as to any one of the lots or parcels of land hereinabove described, and the amount of the connection charge remaining unpaid, if any.

Omaha, Nebraska, November 6, 1963

METROPOLITAN UTILITIES DISTRICT

By R. Buchanan  
Supervisor of Main Extensions

METROPOLITAN UTILITIES DISTRICT  
OMAHA, NEBRASKA

JOB NO. **W.C.C. 2948**

BILL OF MATERIAL

QUAN.	DESCRIPTION
550'	6" C.I.S.J. WATER PIPE
1	FIRE HYDT.
2	6" GATE VALVE
2	C.C. BOXES
1	8" x 6" M.J. TEE
2	8" STYLE 38 DRES. C.P.L.G. (FOR C.I.)

CHLORINATE MAIN  
AIR TAPS AS REQD.

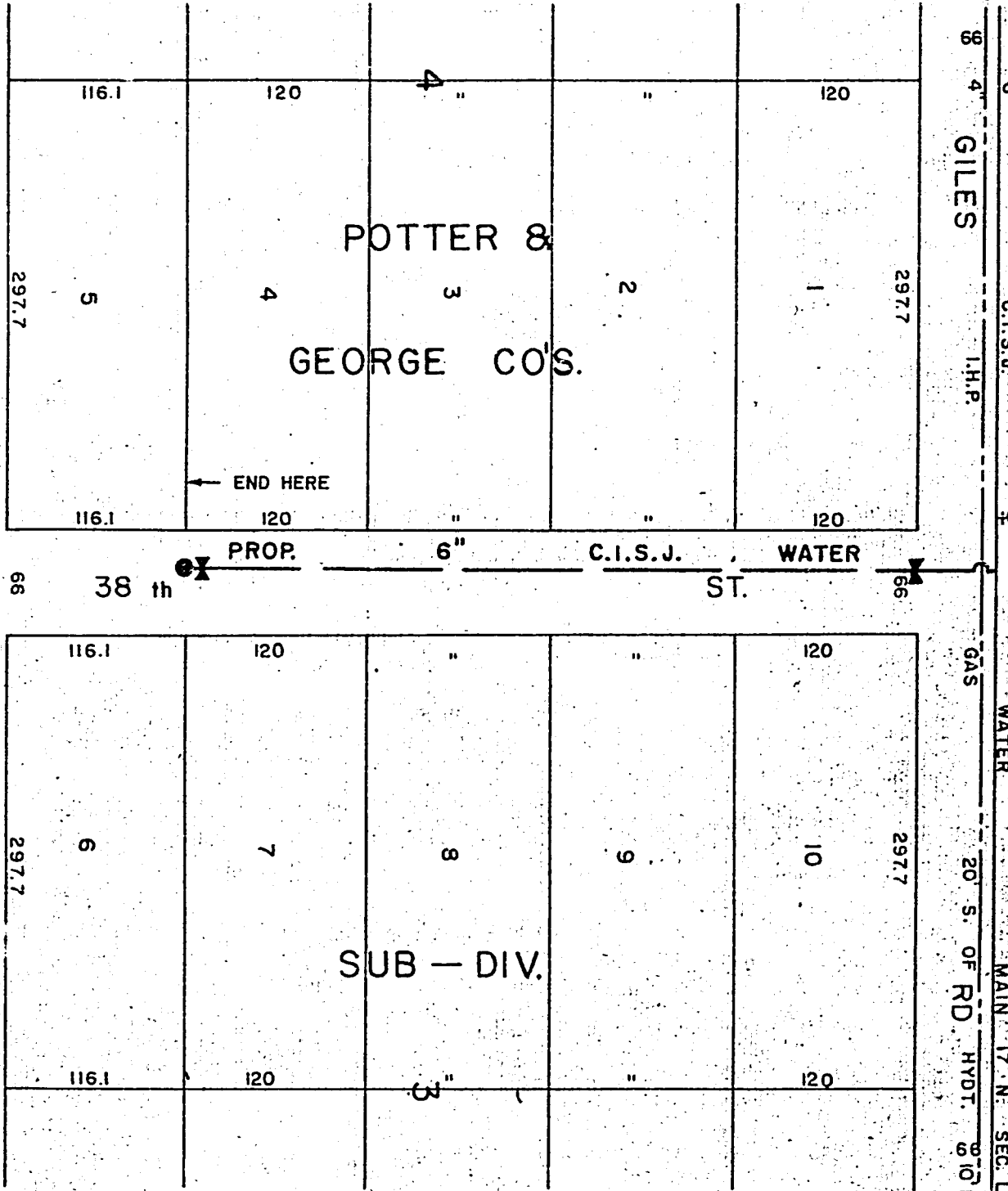
SEE G.C.M. 4869 TO BE LAID  
ON SAME STREET

ENGINEERING DEPT. DATA

ENGINEERING DEPT. DATA		JOB ESTIMATE	
DRAWN BY	L.L.J.	MATERIALS	1600
DATE	5-4-62	PAVING	100
SCALE	1" = 100'	MACH. & VEH.	375
CHECKED BY	W.A.P.	LABOR	500
REVISED BY		OVERHEAD	225
DATE REVISED		OTHER	70
REV. CHECKED BY		TOTAL	2870.00
CHECKED BY ENGR.	C.E.S.	COEST	
REV. CHECKED BY ENGR.		EST. BY	O.H.A.
APPRO. BY ENGR.		DATE	8-19-63

MAIN EXTENSION DIVISION

APPROVED FOR CONSTRUCTION  
DATE BY



32-586 A