

COUNTY TREASURER'S CERTIFICATE

THIS IS TO CERTIFY THAT I FIND NO REGULAR OR SPECIAL TAXES DUE OR UNPAID UPON THE RECORDS OF THIS OFFICE ON THIS 10th DAY OF September A.D. 1972.

[Signature]
SARPY COUNTY TREASURER
By *[Signature]* Chief Deputy

DEDICATION

KNOW ALL MEN BY THESE PRESENTS THAT: BEACON VIEW ESTATES, A NEBRASKA NONPROFIT CORPORATION, OWNERS AND PROPRIETORS OF THE TRACT OF LAND SHOWN AND DESCRIBED HEREON, HAVE CAUSED THE SAME TO BE SUBDIVIDED INTO LOTS AND STREETS, NUMBERED AND NAMES AS SHOWN, AND TO BE HERE-AFTER KNOWN AS BEACON VIEW #1. SAID LOTS NUMBERED FROM 1 THROUGH 12 TO HAVE 5' SIDE AND 5' REAR YARD FOR PRESENT AND FUTURE UTILITY EASEMENTS. IN WITNESS WHEREOF, SAID PARTIES HAVE CAUSED THESE PRESENTS TO BE SIGNED THIS 7th DAY OF September A.D., 1972.

[Signature]
JAMES S. PITTINGER
ACTING SECRETARY

[Signature]
W. WALLACE WEBSTER
PRESIDENT

ACKNOWLEDGEMENT

STATE OF NEBRASKA)
SARPY COUNTY)

ON THIS 10th DAY OF September A.D., 1972, BEFORE ME A GENERAL NOTARY PUBLIC, PERSONALLY APPEARED BEACON VIEW ESTATES, A NEBRASKA NONPROFIT CORPORATION, (W. WALLACE WEBSTER, PRESIDENT AND JAMES S. PITTINGER, ACTING SECRETARY), WHO ARE PERSONALLY KNOWN TO ME TO BE THE IDENTICAL PERSONS WHOSE NAMES ARE AFFIXED TO THE FOREGOING INSTRUMENT, AND THEY ACKNOWLEDGE THE SIGNING OF SAID INSTRUMENT TO BE THEIR VOLUNTARY ACT AND DEED.

WITNESS MY HAND AND OFFICIAL SEAL AT OMAHA, NEBRASKA, IN SAID COUNTY, THE DATE LAST AFORESAID.

[Signature]
NOTARY PUBLIC

MY COMMISSION EXPIRES THE 30th DAY OF April A.D., 1975.

SARPY COUNTY COMMISSIONER ACCEPTANCE

THIS PLAT OF BEACON VIEW ESTATES #1 WAS APPROVED AND ACCEPTED BY THE SARPY COUNTY COMMISSIONERS ON THIS 10th DAY OF Oct A.D., 1972.

ATTEST: *[Signature]*
CHAIRMAN SARPY COUNTY COMMISSIONERS

SARPY COUNTY PLANNING COMMISSION APPROVAL

THIS PLAT OF BEACON VIEW ESTATES #1, AS SHOWN, WAS APPROVED BY THE SARPY COUNTY PLANNING COMMISSION ON THIS 20th DAY OF Sept A.D., 1972.

[Signature]
CHAIRMAN

SARPY COUNTY SURVEYOR

THIS PLAT OF BEACON VIEW ESTATES #1, AS SHOWN, WAS APPROVED BY THE SARPY COUNTY SURVEYOR ON THIS 15th DAY OF September A.D., 1972.



[Signature]
SARPY COUNTY SURVEYOR

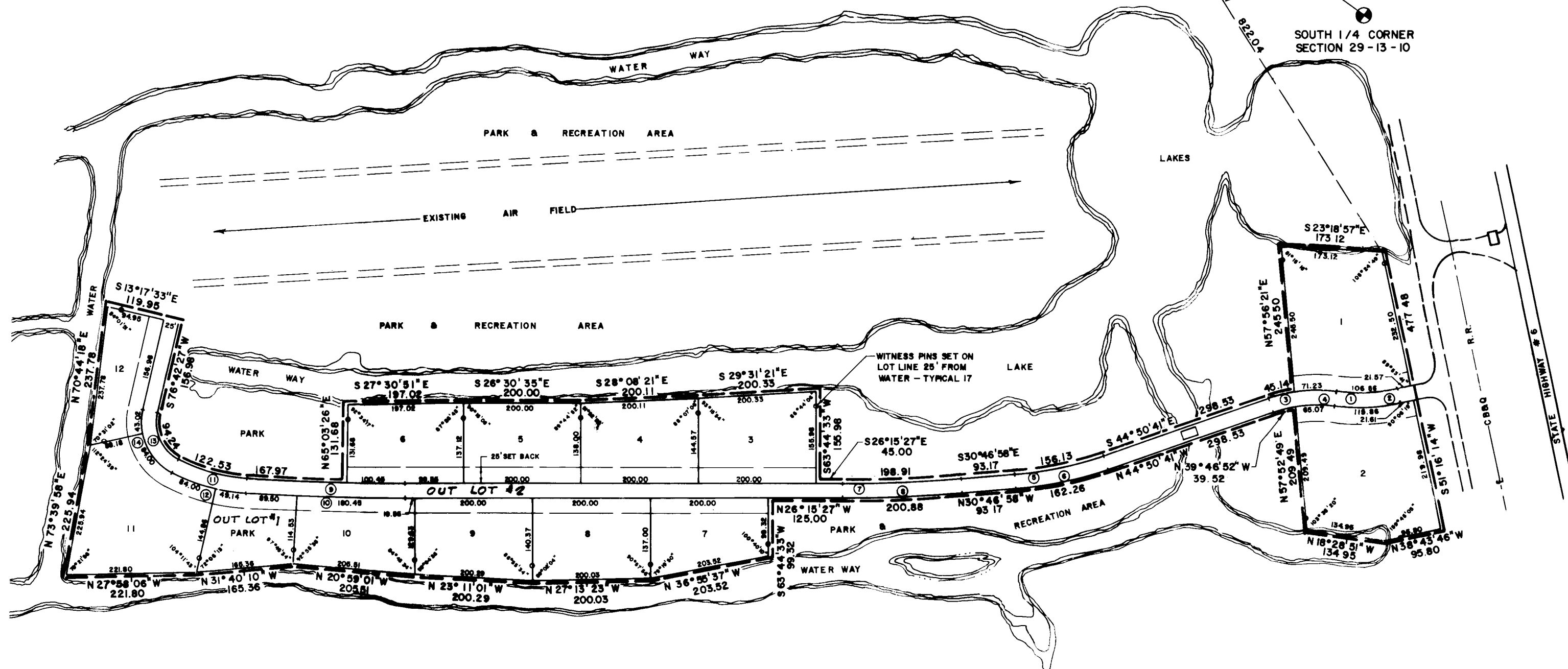
SARPY COUNTY BUILDING INSPECTOR

THIS PLAT OF BEACON VIEW ESTATES #1, AS SHOWN, WAS APPROVED BY THE SARPY COUNTY BUILDING INSPECTOR ON THIS 10th DAY OF Sept A.D., 1972.

[Signature]
SARPY COUNTY BUILDING INSPECTOR

BEACON VIEW

A TRACT OF LAND SITUATED IN
THE WEST 1/2 OF SECTION 29
TOWNSHIP 13 NORTH, RANGE 10 EAST
OF THE 6TH P.M., SARPY COUNTY,
NEBRASKA



CURVE DATA

① Δ 20°38'41"	③ Δ 76°51'55"	⑤ Δ 14°03'43"	⑦ Δ 04°31'31"	⑨ Δ 09°30'47"	⑪ Δ 24°16'26"	⑬ Δ 79°08'41"
T 54.01	T 59.28	T 78.46	T 99.91	T 134.25	T 62.20	T 56.28
R 296.56	R 248.19	R 656.15	R 2518.44	R 4377.75	R 288.83	R 71.88
ARC 106.86	ARC 116.37	ARC 156.13	ARC 198.91	ARC 288.42	ARC 122.53	ARC 94.24
C 106.28	C 115.31	C 155.74	C 198.86	C 288.36	C 121.62	C 87.63

② Δ 20°36'41"	④ Δ 26°51'55"	⑥ Δ 14°03'43"	⑧ Δ 04°31'31"	⑩ Δ 09°30'47"	⑫ Δ 24°16'26"	⑭ Δ 79°08'41"
T 58.57	T 53.31	T 81.54	T 100.49	T 136.02	T 67.99	T 74.51
R 321.56	R 223.19	R 661.15	R 2543.44	R 4402.75	R 315.83	R 96.85
ARC 115.86	ARC 104.65	ARC 162.26	ARC 200.88	ARC 289.95	ARC 133.14	ARC 127.02
C 115.24	C 103.69	C 161.86	C 200.83	C 289.91	C 132.14	C 118.11

PLATTE RIVER



0 50 0 100
DRAWN BY SBR

11-1-72 8:08
83 *[Signature]*
Deed Book 94, page 525

021020

SURVEYOR'S CERTIFICATE AND LEGAL DESCRIPTION

I CERTIFY THAT WE HAVE MADE A GROUND SURVEY OF THE SUBDIVISION HEREIN DESCRIBED AND THAT WE HAVE PLACED PERMANENT MONUMENTS AND STAKES AT ALL CORNERS OF ALL LOTS, STREETS, AVENUES, ANGLE POINTS AND ENDS OF ALL CURVES IN BEACON VIEW, A SUBDIVISION OF A TRACT OF LAND IN THE WEST 1/2 OF SECTION 29, TOWNSHIP 13 NORTH, RANGE 10 EAST OF THE 6TH P.M., SARPY COUNTY, NEBRASKA, MORE PARTICULARLY DESCRIBED AS FOLLOWS: COMMENCING AT THE CENTER OF SAID SECTION 29-13-10, THENCE S22°12'41"W, 822.04 FEET TO THE POINT OF BEGINNING, THENCE S51°16'14"W, 477.48 FEET, THENCE N38°43'46"W, 95.80 FEET, THENCE N18°28'51"W, 134.95 FEET, THENCE N57°52'49"E, 209.49 FEET, THENCE ON A CURVE TO THE LEFT WITH A RADIUS OF 233.19 FEET AND A CHORD OF 39.52 FEET BEARING N38°46'52"W FOR AN ARC DISTANCE OF 39.58 FEET, THENCE N44°50'41"W, 298.53 FEET, THENCE ALONG A CURVE TO THE RIGHT HAVING A RADIUS OF 661.15 FEET FOR AN ARC DISTANCE OF 162.26 FEET, THENCE N30°46'58"W, 93.17 FEET, THENCE ON A CURVE TO THE RIGHT WITH A RADIUS OF 2543.44 FEET, FOR AN ARC DISTANCE OF 200.88 FEET, THENCE N26°15'27"W, 125.00 FEET, THENCE S63°44'33"W, 99.32 FEET, THENCE N36°55'37"W, 203.52 FEET, THENCE N27°13'23"W, 200.03 FEET, THENCE N23°11'01"W, 200.29 FEET, THENCE N20°59'01"W, 205.51 FEET, THENCE N31°40'10"W, 165.36 FEET, THENCE N27°58'06"W, 221.80 FEET, THENCE N73°39'58"E, 225.94 FEET, THENCE N70°44'18"E, 237.78 FEET, THENCE S13°17'33"E, 119.91 FEET, THENCE S76°42'27"W, 156.98 FEET, THENCE ALONG A CURVE TO THE LEFT WITH A RADIUS OF 71.85 FEET FOR AN ARC DISTANCE OF 94.24 FEET, THENCE ALONG A CURVE TO THE LEFT HAVING A RADIUS OF 288.83 FEET FOR AN ARC DISTANCE OF 122.53 FEET, THENCE ALONG A CURVE TO THE LEFT HAVING A RADIUS OF 4377.75 FEET FOR AN ARC DISTANCE OF 167.97 FEET, THENCE N65°03'26"E, 131.68 FEET, THENCE S27°30'51"E, 197.02 FEET, THENCE S26°30'35"E, 200.00 FEET, THENCE S26°08'21"E, 200.11 FEET, THENCE S28°31'21"E, 200.33 FEET, THENCE S63°44'33"W, 155.98 FEET, THENCE S26°15'27"E, 45.00 FEET, THENCE ALONG A CURVE TO THE LEFT HAVING A RADIUS OF 2518.44 FEET FOR AN ARC DISTANCE OF 198.91 FEET, THENCE S30°46'58"W, 93.17 FEET, THENCE ALONG A CURVE TO THE LEFT HAVING A RADIUS OF 636.15 FEET FOR AN ARC DISTANCE OF 156.13 FEET, THENCE S44°50'41"W, 298.53 FEET, THENCE ALONG A CURVE TO THE RIGHT HAVING A RADIUS OF 248.19 FEET, FOR AN ARC DISTANCE OF 45.14 FEET, THENCE N57°56'21"E, 245.50 FEET, THENCE S23°18'57"E, 173.12 FEET TO THE POINT OF BEGINNING, AFORE DESCRIBED TRACT OF LAND CONTAINING 10.29 ACRES.

[Signature]
REGISTERED LAND SURVEYOR

L.S. 223



SEAL

☒ L. ROBERT KIMBALL
CONSULTING ENGINEERS INC.
808 MAGALL STREET 402-904-790
OMAHA, NEBRASKA

BOYER & BISKUP ARCHITECTS

"BEACON VIEW" PLAT
TAX LOT 0 SECTION 29 T13N R10E
OF THE 6TH P.M. SARPY CO NEBR.

FINAL PLAT
BEACON VIEW #1