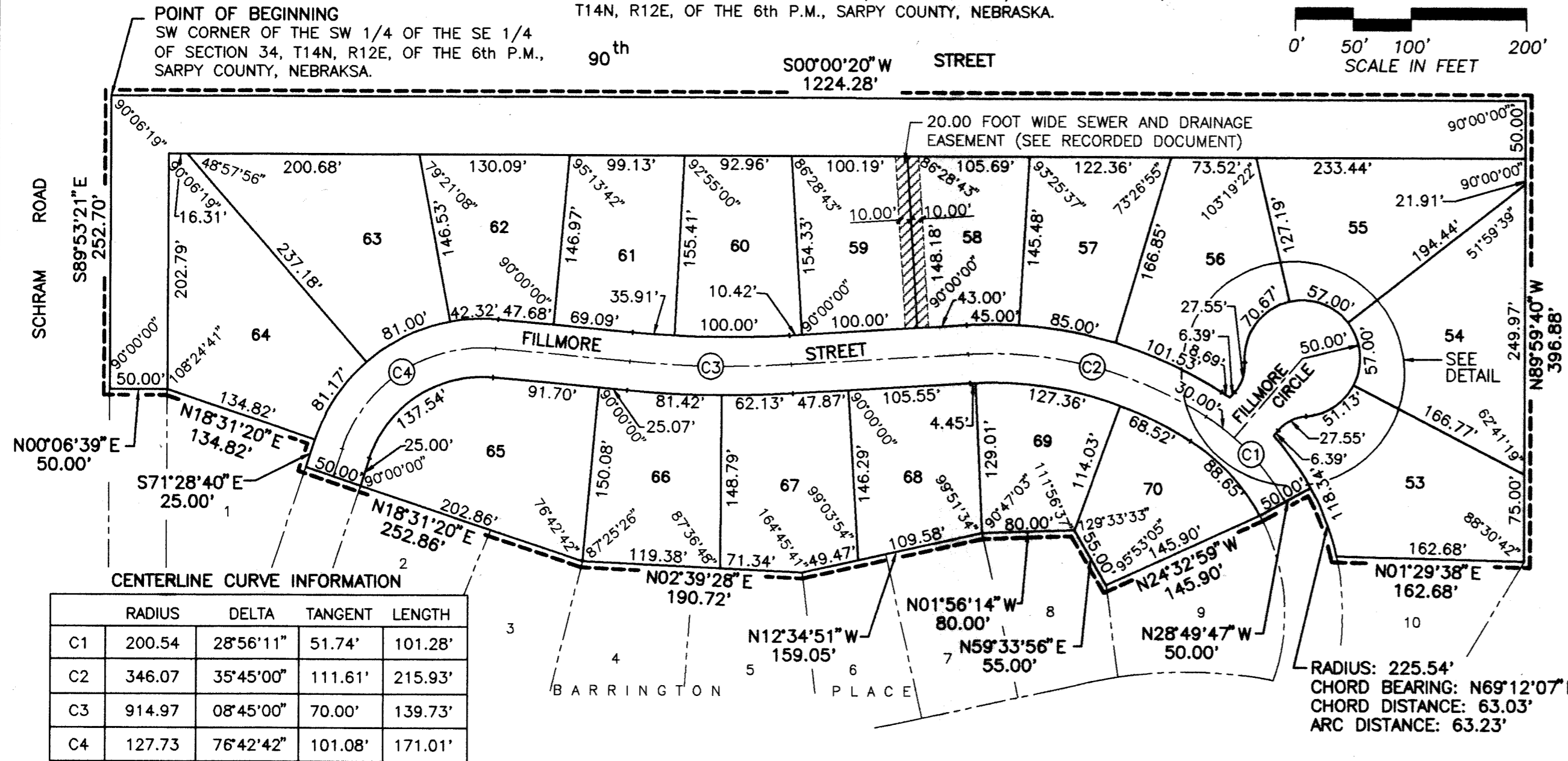
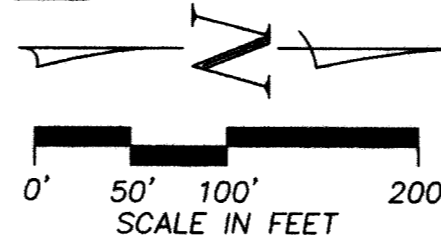


98-27529

BARRINGTON PLACE

LOTS 53 THRU 70, INCLUSIVE

BEING A PLATTING OF PART OF THE SW 1/4 OF THE SE 1/4 OF SECTION 34, T14N, R12E, OF THE 6th P.M., SARPY COUNTY, NEBRASKA.



- NOTES:
- DIRECT VEHICULAR ACCESS TO 90th STREET FROM LOTS 55 THRU 64, INCLUSIVE, WILL NOT BE PERMITTED.
 - DIRECT VEHICULAR ACCESS TO SCHRAM ROAD FROM LOT 64 WILL NOT BE PERMITTED.

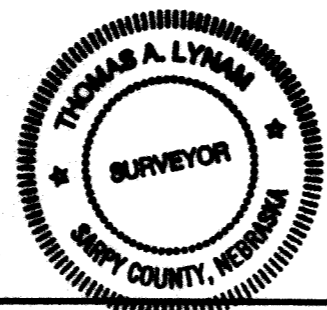
ACCEPTANCE OF PAPIILLION CITY COUNCIL
THIS PLAT OF BARRINGTON PLACE WAS APPROVED AND ACCEPTED BY THE PAPIILLION CITY COUNCIL, OF THE CITY OF PAPIILLION, NEBRASKA ON THIS 29th DAY OF Sept, 1998, IN ACCORDANCE WITH THE STATUTES OF NEBRASKA.

[Signature]
MAYOR

APPROVAL BY PAPIILLION CITY ENGINEER
THIS PLAT OF BARRINGTON PLACE WAS APPROVED BY THE PAPIILLION CITY ENGINEER OF THE CITY OF PAPIILLION, NEBRASKA ON THIS 29th DAY OF Sept, 1998.

[Signature]
CITY ENGINEER

REVIEW BY THE SARPY COUNTY SURVEYOR'S OFFICE
THIS PLAT OF BARRINGTON PLACE WAS REVIEWED BY THE SARPY COUNTY SURVEYOR'S OFFICE ON THIS 28th DAY OF Sept, 1998.



[Signature]
SARPY COUNTY SURVEYOR

SURVEYOR'S CERTIFICATE

I HEREBY CERTIFY THAT I HAVE MADE A BOUNDARY SURVEY OF THE SUBDIVISION DESCRIBED HEREIN AND THAT PERMANENT MARKERS HAVE BEEN FOUND OR SET AT ALL CORNERS OF SAID BOUNDARY AND THAT PERMANENT MARKERS WILL BE SET AT ALL LOT CORNERS AND AT THE ENDS OF ALL CURVES WITHIN SAID SUBDIVISION TO BE KNOWN AS BARRINGTON PLACE, LOTS 53 THRU 70, INCLUSIVE, BEING A PLATTING OF PART OF THE SW 1/4 OF THE SE 1/4 OF SECTION 34, T14N, R12E, OF THE 6th P.M., SARPY COUNTY, NEBRASKA, DESCRIBED AS FOLLOWS: BEGINNING AT THE SW CORNER OF SAID SW 1/4, THENCE S89°53'21" E 252.70 FEET; THENCE N00°06'39" E 50.00 FEET; THENCE N18°31'20" E 134.82 FEET; THENCE S71°28'40" E 25.00 FEET; THENCE N01°56'14" W 80.00 FEET; THENCE N59°33'56" E 55.00 FEET; THENCE N24°32'59" W 145.90 FEET; THENCE N28°49'47" W 50.00 FEET; THENCE N01°29'38" E 162.68 FEET TO THE WEST LINE OF SAID SW 1/4; THENCE S00°00'20" W 1224.28 FEET ON THE WEST LINE OF SAID SW 1/4 TO THE POINT OF BEGINNING.

Filed For Record Sept 30 1998 at 12:09 p.m.
Instrument # 98-027529
Lloyd J. Dowding Register of Deed Sarpy Cty, NE



Counter ark
Verify ark
D.E. ark
Proof ark
Fee \$ 24.50
ck Cash Chg

DAVID H. NEEF
NEBRASKA R.L.S. 475

JULY 18, 1997
DATE:

DEDICATION

KNOW ALL MEN BY THESE PRESENTS: THAT WE, BARRINGTON PLACE LIMITED PARTNERSHIP, A NEBRASKA LIMITED PARTNERSHIP, BEING THE OWNERS, OF THE LAND DESCRIBED WITHIN THE SURVEYOR'S CERTIFICATE AND EMBRACED WITHIN THIS PLAT, HAVE CAUSED SAID LAND TO BE SUBDIVIDED INTO STREETS AND LOTS TO BE NAMED AND NUMBERED AS SHOWN, SAID SUBDIVISION TO BE HEREAFTER KNOWN AS BARRINGTON PLACE, AND WE DO HEREBY RATIFY AND APPROVE OF THE DISPOSITION OF OUR PROPERTY AS SHOWN ON THIS PLAT AND WE HEREBY DEDICATE TO THE PUBLIC, FOR PUBLIC USE, THE STREETS AS SHOWN ON THIS PLAT, AND WE DO FURTHER GRANT A PERPETUAL EASEMENT TO THE OMAHA PUBLIC POWER DISTRICT, U.S. WEST COMMUNICATIONS, INC. AND ANY COMPANY WHICH HAS BEEN GRANTED A FRANCHISE TO PROVIDE A CABLE TELEVISION SYSTEM IN THE AREA TO BE SUBDIVIDED, THEIR SUCCESSORS AND ASSIGNS, TO ERRECT, OPERATE, MAINTAIN, REPAIR, AND RENEW POLES, WIRES, CROSSARMS, DOWN GUYS AND ANCHORS, CABLES, CONDUITS AND OTHER RELATED FACILITIES AND TO EXTEND THEREON WIRES OR CABLES FOR THE CARRYING AND TRANSMISSION OF ELECTRIC CURRENT FOR LIGHT, HEAT, AND POWER FOR THE TRANSMISSION OF SIGNALS AND SOUNDS OF ALL KINDS AND THE RECEPTION THEREOF, INCLUDING SIGNALS PROVIDED BY A CABLE TELEVISION SYSTEM AND THEIR RECEPTION, ON, OVER, THROUGH, UNDER AND ACROSS A FIVE (5') FOOT WIDE STRIP OF LAND ABUTTING ALL FRONT AND SIDE BOUNDARY LOT LINES; AN EIGHT (8') FOOT WIDE STRIP OF LAND ABUTTING THE REAR LINES OF LOTS 55 THRU 70, INCLUSIVE; AND A SIXTEEN (16') FOOT WIDE STRIP OF LAND ABUTTING THE NORTH LINES OF LOTS 53, 54 AND 55. SAID SIXTEEN (16') FOOT WIDE EASEMENT WILL BE REDUCED TO AN EIGHT (8') FOOT WIDE STRIP WHEN THE ADJACENT LAND IS SURVEYED, PLATTED AND RECORDED IF SAID SIXTEEN (16') FOOT EASEMENT IS NOT OCCUPIED BY UTILITY FACILITIES AND IF REQUESTED BY THE OWNER. NO PERMANENT BUILDINGS, TREES, RETAINING WALLS OR LOOSE ROCK WALLS SHALL BE PLACED IN SAID EASEMENT WAYS, BUT THE SAME MAY BE USED FOR GARDENS, SHRUBS, LANDSCAPING, SIDEWALKS, DRIVEWAYS, AND OTHER PURPOSES THAT DO NOT THEN OR LATER INTERFERE WITH THE AFORESAID USES OR RIGHTS HEREIN GRANTED.

BARRINGTON PLACE LIMITED PARTNERSHIP,
A NEBRASKA LIMITED PARTNERSHIP

BY: OLD DOMINION LAND COMPANY,
A NEBRASKA CORPORATION, ITS GENERAL PARTNER

BY: *[Signature]*
ARTHUR D. GRUBE, PRESIDENT

ACKNOWLEDGEMENT OF NOTARY

STATE OF NEBRASKA)
COUNTY OF SARPY) SS

THE FOREGOING DEDICATION WAS ACKNOWLEDGED BEFORE ME THIS 29 DAY OF August, 1997 BY ARTHUR D. GRUBE, PRESIDENT OF OLD DOMINION LAND COMPANY, ON BEHALF OF SAID COMPANY AND AS GENERAL PARTNER AND ON BEHALF OF BARRINGTON PLACE LIMITED PARTNERSHIP.

[Signature]
NOTARY PUBLIC

SARPY COUNTY TREASURER'S CERTIFICATE

I HEREBY CERTIFY THAT THE RECORDS OF MY OFFICE SHOW NO TAXES DUE OR DELINQUENT UPON THE LAND DESCRIBED IN THE SURVEYOR'S CERTIFICATE AS APPEARS ON THIS PLAT AS OF THIS 28th DAY OF September 1998. NO TAXES ASSESSED AND LEVIED FOR THE CURRENT YEAR ARE NEITHER DUE NOR PAID. TREASURER'S CERTIFICATION IS ONLY VALID UNTIL DECEMBER 30th

[Signature]
SARPY COUNTY TREASURER



APPROVAL BY THE CITY PLANNING BOARD

THIS PLAT OF BARRINGTON PLACE WAS APPROVED BY THE PAPIILLION CITY PLANNING BOARD, OF THE CITY OF PAPIILLION, NEBRASKA ON THIS 29 DAY OF Sept, 1997.

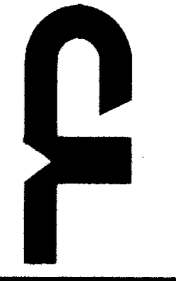
[Signature]
CHAIRMAN

BARRINGTON PLACE

DATE: JULY 18, 1997
DRAWN BY: JKW
CHECKED BY: DHN

THOMPSON, DREESSEN & DORNER, INC.
2 CONSULTING ENGINEERS & LAND SURVEYORS

10836 OLD MILL RD.
OMAHA, NE 68154
(402) 330 - 8860



492-113