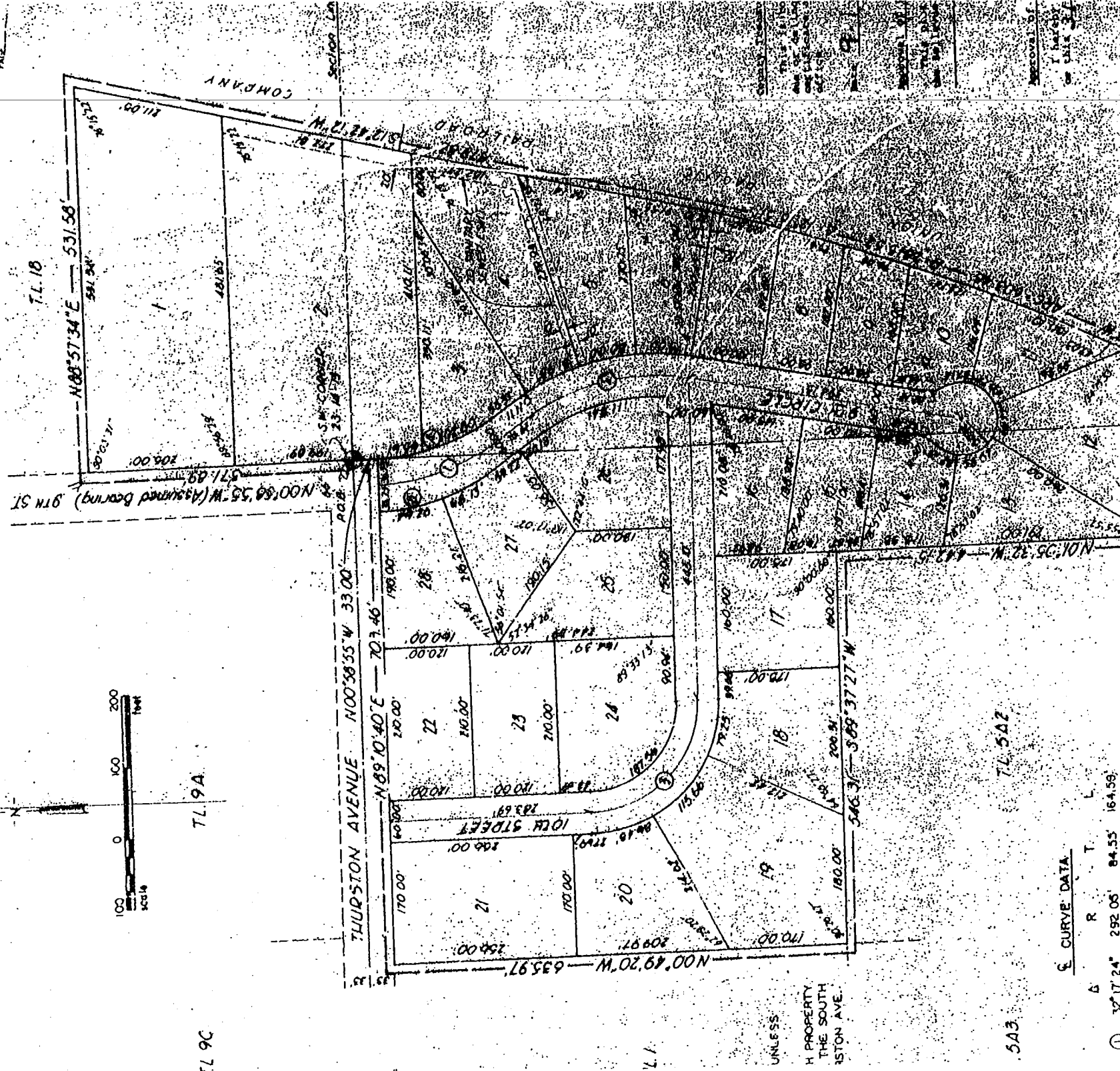
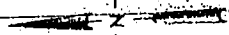


# AVERY COMMERCIAL INDUSTRIAL PLAZA

A REPLAT OF T.L. 546A2A NW 1/4 SECTION 26, T.L. 681 & PART OF T.L. 1 NE 1/4 SECTION 27, PART OF T.L. 18 SW 1/4 SECTION 23, T14N. R13E 6TH PM, SARDY COUNTY, NEBRASKA



TL 9C

TL 9A

5A3

TL 5A2

UNLESS  
H. PROPERTY  
THE SOUTH  
1STON AVE.

FILED FOR  
PAGE

RECORDED BY  
DATE