

# MISCELLANEOUS RECORD, No. 75

ORDINANCE No. 12684, June 23, 1925.

DEPARTMENT OF PUBLIC IMPROVEMENTS, OMAHA, NEBR.  
OFFICE OF CITY ENGINEER

VACATING SAHLER from 30th St. to E.L. of OMAHA BELT RY. R OF W. 31st St. from SPRAGUE ST. to SAHLER ST. ALLEY bet. 30th St. & 31st from Pt. 54 ft. North of SPRAGUE ST. to S.L. of OMAHA BELT RY. R. OR W. & ALLEY bet. 31st St. & 31st Ave. FROM SPRAGUE ST. to S.L. of OMAHA BELT RAILWAY RIGHT OF WAY.

Made by Ed.S.	SCALE	Aug. 1925.
Checked by	1 in = 100 ft.	Drawing No. 14831

State of Nebraska, }  
Douglas County, } ss.

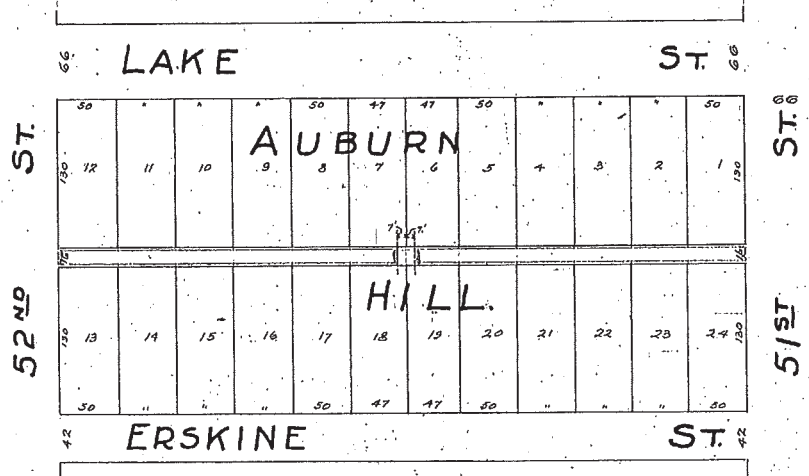
Entered on Numerical Index and filed for Record in the Register of Deeds' Office of said County, the 28th day of November, A.D., 1925, at 9:45 o'clock A.M.  
Harry Pearce,

Register of Deeds:

Compared by *M W*

\*\*\*\*\*

16. VACATING ALLEY Bet. ERSKINE & LAKE STS. From 51st St. to 52nd St.



I, Hereby Certify that this Plat is a True Copy of Records on File in this Office.

Herman Beal

City Engineer

# MISCELLANEOUS RECORD, No. 75

FINAL ORDINANCE NO. 12785 Sept. 29, 1925.  
NECESSITY ORDINANCE NO. 12683, June 23, 1925.

DEPARTMENT OF PUBLIC IMPROVEMENTS, OMAHA, OFFICE OF CITY ENGINEER.		
VACATING ALLEY Bet. ERSKINE & LAKE STS. from 51st st. to 52nd St.		
Made By Ed.S.	SCALE	Dec. 7, 1925
Checked by VHB	1 in= 100 ft.	Drawing No. 148125

State of Nebraska, )  
Douglas County, ) ss.

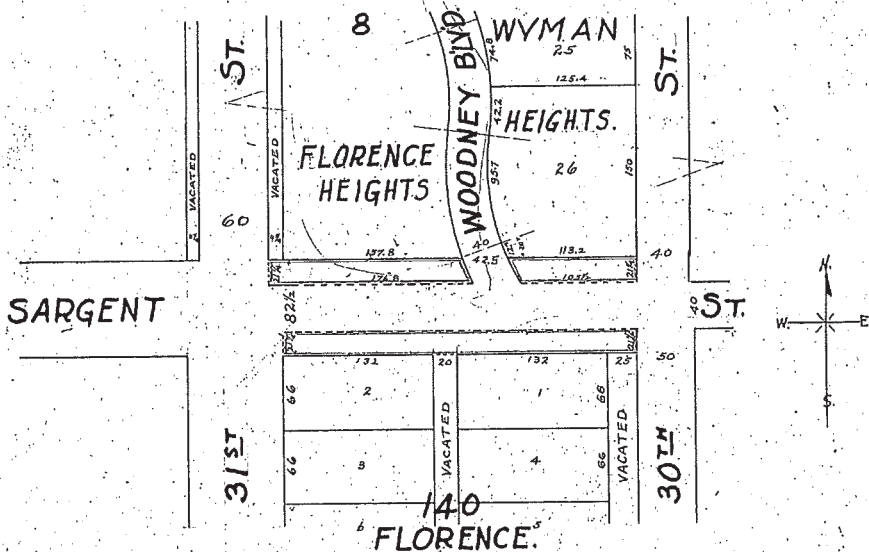
Entered on Numerical Index and filed for Record in  
the Register of Deeds' Office of said County, the 24th  
day of December, A.D., 1925, at 11:00 o'clock A.M.

Harry Pearce;

Register of Deeds.

Compared by *m+w*

14. VACATING NORTH AND SOUTH 21 1/2 FEET OF SARGENT ST. BET. 30th & 31st STS.-



**DESCRIPTION OF PROPERTY:**

Beginning at the South East Corner of Lot 26, Wyman Heights Add; thence South along the West line of 30th Street, North of Sargent Street Produced, South a Distance of 21 1/2 feet; thence West along a line 21 1/2 feet South of and parallel to the South line of Lot 26, Wyman Heights Addition, a Distance of 105 1/2 feet to East line of Woodney Boulevard Produced South; thence North along the East line of Woodney Boulevard produced South; to the South West Corner of Lot 26, Wyman Heights Add; thence East along the South line of Lot 26, Wyman Heights Add. a Distance of 113.2 feet to place of beginning.

Also Beginning at the South east Corner of Lot 8, Florence Heights Add; thence West along the South line of Lot 8, Florence Heights Add. a distance of 169.05 feet to Point on the East line of 31st Street as Narrowed; thence South along the East line of 31st Street as