

FILED SARY COUNTY NEBRASKA INSTRUMENT NUMBER 2015-31360 12/22/2015 1:50:39 PM REGISTER OF DEEDS

drawn by EAM reviewed by MET

revision 5-19-15 G.M.

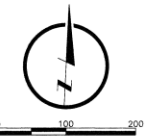
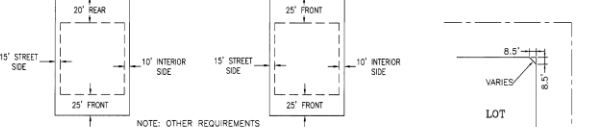
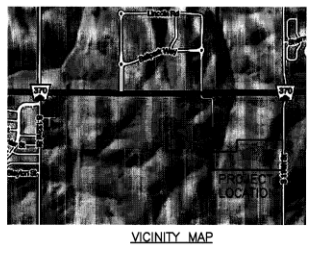
LAMP RYNEARSON & ASSOCIATES P 1470 West Dodge Road, Suite 100 Omaha, Nebraska 68154-2027 www.LRA-inc.com

FINAL PLAT

job number-taka 01130401-003 book page 12-B-2014 sheet 1 of 1

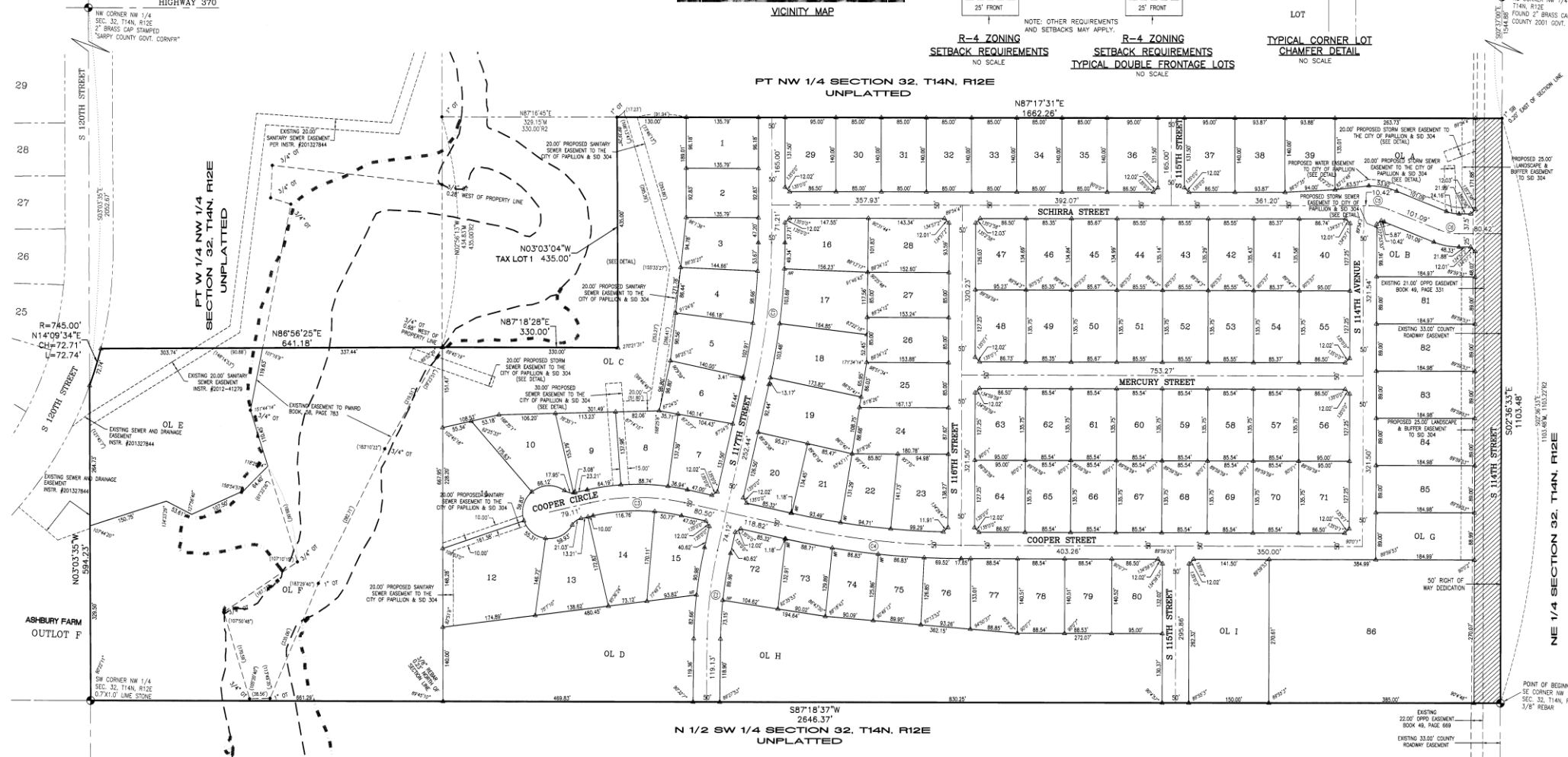
ASHBURY CREEK

LOTS 1 THROUGH 86, INCLUSIVE AND OUTLOTS A THROUGH I, INCLUSIVE, ASHBURY CREEK, BEING A PLATTING OF PART OF THE NORTHWEST QUARTER OF SECTION 32, TOWNSHIP 14 NORTH, RANGE 12 EAST OF THE 6TH P.M., SARY COUNTY, NEBRASKA



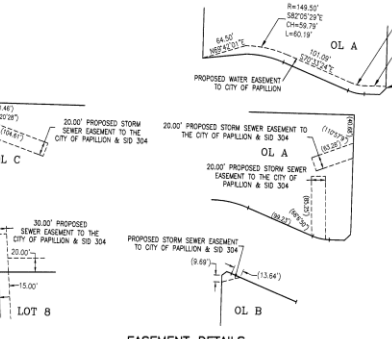
LEGEND table listing various symbols and line styles used in the plat, such as boundary lines, lot lines, easements, and street dedications.

SECTION CORNER TIES table providing precise measurements and bearings for the corners of the sections, including ties to previous sections and to the city of Papillion.



PARCEL AREA TABLE and CENTERLINE CURVE TABLE. The area table lists parcel numbers, areas, and owners. The curve table lists curve data including radius, arc length, chord length, and delta angle.

OUTLOT AREA / PURPOSE / OWNERSHIP TABLE listing details for outlots A through I, including their areas and intended uses.



- NOTES section containing 15 numbered items providing important instructions and clarifications regarding the plat, such as 'ALL DISTANCES ARE SHOWN IN DECIMAL FEET' and 'DIRECT VEHICULAR ACCESS TO S 114TH STREET IS ONLY PERMITTED ON OUTLOT G'.

COUNTY TREASURER'S CERTIFICATE certifying that no irregular taxes or special taxes are delinquent against the property described in the plat.

REVIEW BY SARY COUNTY PUBLIC WORKS certifying that the plat complies with applicable codes and standards.

CITY ENGINEER'S CERTIFICATE certifying that the plat meets the requirements for subdivision and street layout.

APPROVAL OF PAPILLION PLANNING COMMISSION certifying that the plat meets the city's planning and zoning requirements.

APPROVAL OF PAPILLION CITY COUNCIL certifying that the plat has been approved by the local governing body.

LAND SURVEYOR'S CERTIFICATE certifying that the survey was conducted in accordance with professional standards and that the plat is a true and correct copy of the field notes.

DEDICATION section describing the grant of easements for public utilities, including sewer, water, and communication lines.

GRANTS OF EASEMENTS section detailing the specific terms, conditions, and widths of various easements granted.

FOR WATER AND GAS section detailing the grant of easements for water and gas service, including the location and width of the easements.

FOR DRAINAGE AND STORM SEWERS AND/OR SANITARY SEWERS section detailing the grant of easements for drainage and sewer service.

ACKNOWLEDGEMENT OF NOTARIES section containing the notary public seals and signatures for the state of Nebraska.

APPROVAL OF PAPILLION PLANNING COMMISSION section containing the official signature and seal of the city engineer.

APPROVAL OF PAPILLION CITY COUNCIL section containing the official signature and seal of the city mayor.

NOTARY PUBLIC seals and signatures for the state of Nebraska, including the notary seal for Patrick J. Sullivan.