

Project No. EGA 001058

Location ARMBRUST OAKS 2ND ADD.

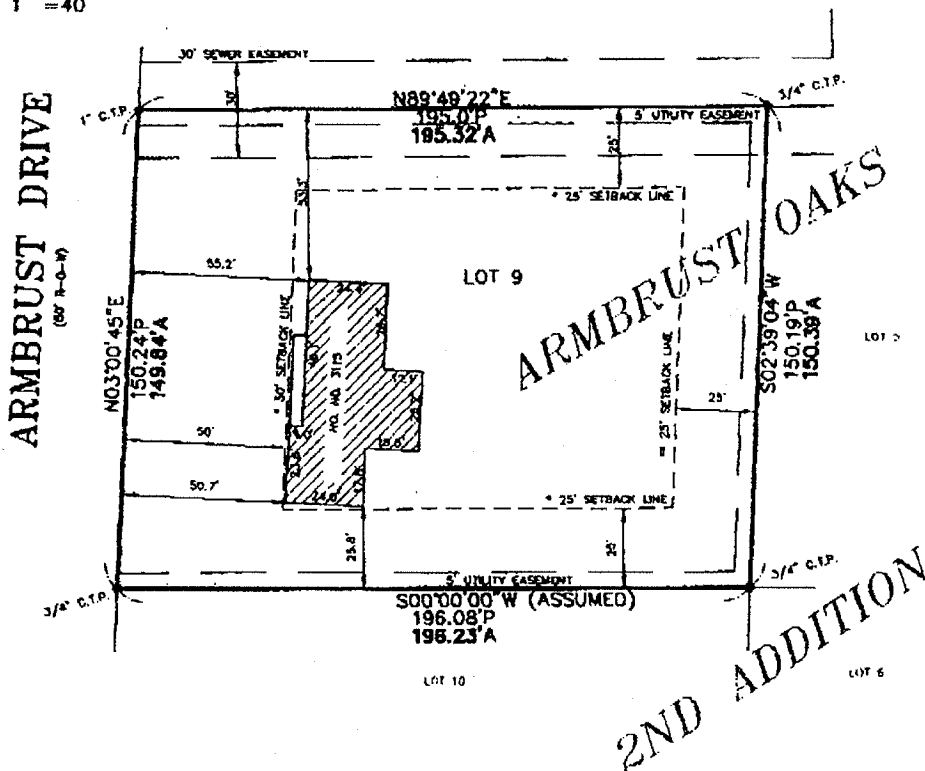
LAND SURVEYOR'S CERTIFICATE

Surveyor's Certification:

I hereby certify that this plat, map, survey, or report was made by me or under my direct personal supervision and that I am a duly Registered Land Surveyor under the laws of the State of Nebraska.

Legal Description:

LOT 9, ARMBRUST OAKS 2ND ADDITION, AN ADDITION TO THE CITY OF OMAHA AS SURVEYED, PLATTED AND RECORDED, IN DOUGLAS COUNTY, NEBRASKA.



\*NOTE: PER PROTECTIVE COVENANTS AND EASEMENTS BOOK 394, PAGE 333.

\*\*NOTE: PER CITY OF OMAHA ZONING REGULATIONS.

Legend:

- |                         |                                |                        |
|-------------------------|--------------------------------|------------------------|
| P - PLAT DISTANCE       | C.T.P. - CRIMPED TOP PIPE      | ● - FOUND SURVEY POINT |
| A - ACTUAL DISTANCE     | O.T.P. - OPEN TOP PIPE         | △ - SET SURVEY POINT   |
| R - RECORDED DISTANCE   | S.D.H. - STAR DRILL HOLE       |                        |
| C - CALCULATED DISTANCE | "X" - CHISELED "X" IN CONCRETE |                        |

Date: 2/15/00

*L. A. Van Fleet*  
Larry A. Van Fleet



**EHRHART  
GRIFFIN &  
ASSOCIATES**

Crew: RLK Drafter: BLH  
ENGINEERING PLANNING LAND SURVEYING  
3915 Cuming Street • Omaha, Nebraska 68131 • 402 / 551-0631