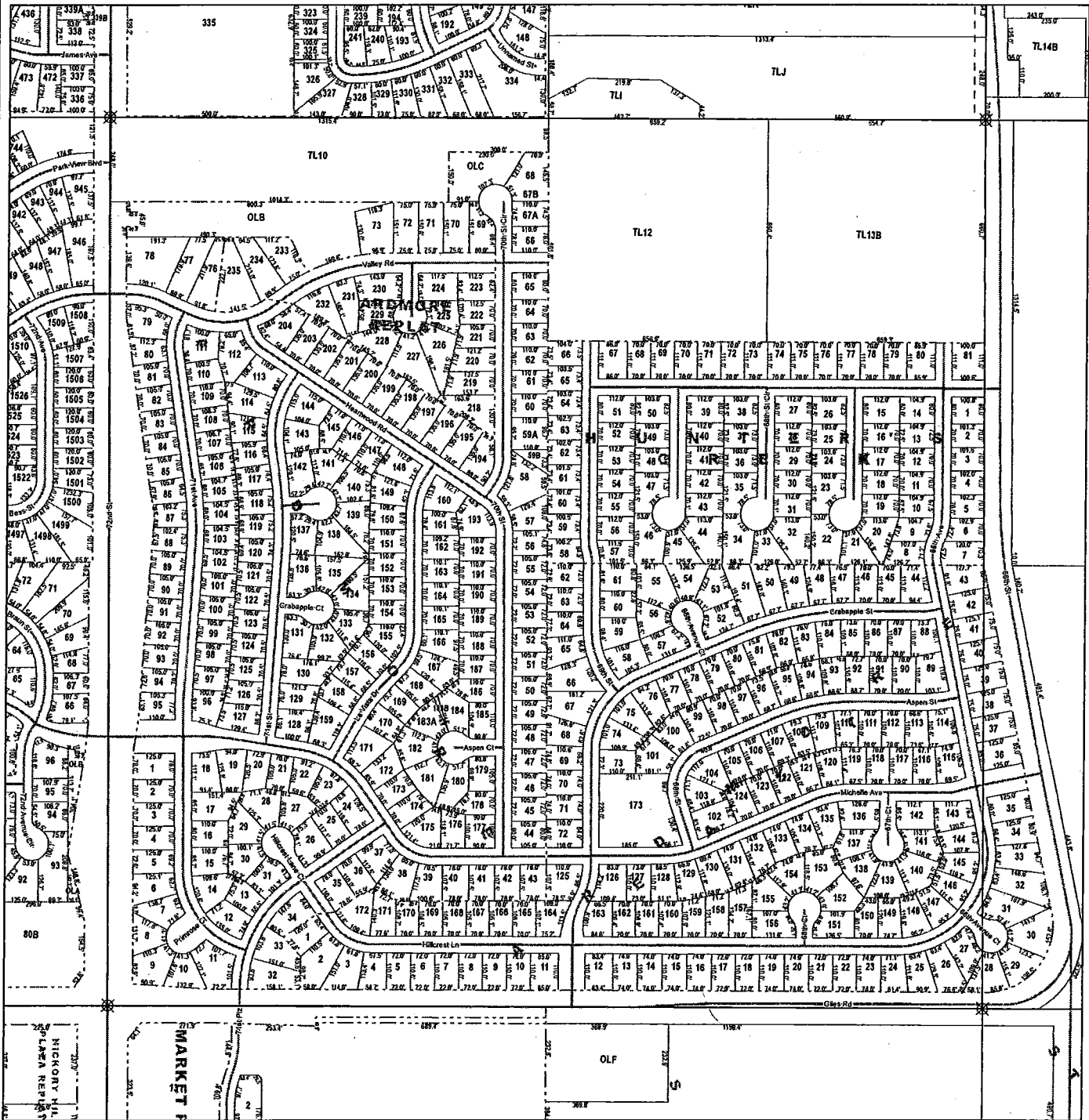


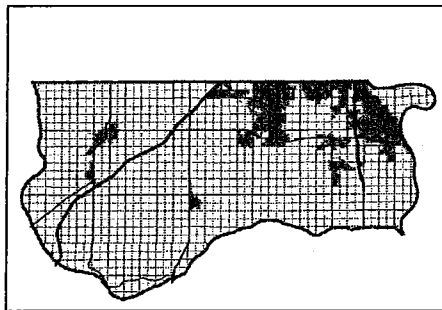
SW1/4 SEC 13 T14N R12E

1 inch = 200 feet



SARPY COUNTY
SURVEYOR'S OFFICE

sarpy county
GIS



Legend

- Corners
- Quarter Sections
- Subdivisions
- Rights of Way
- Lots
- Blocks
- Railroads
- Street Centerline

NOTICE

This map constitutes a representation based on information provided to the Sarpy County Surveyors Office by other individuals and organizations. Therefore no representations regarding the accuracy of the size, dimensions, measurements, condition, platting, or location of the within described area are made. Should such information be required for construction, zoning, or other purposes, the services of a private surveyor and/or title search should be secured.

This Map Was Printed On:
6/23/2009

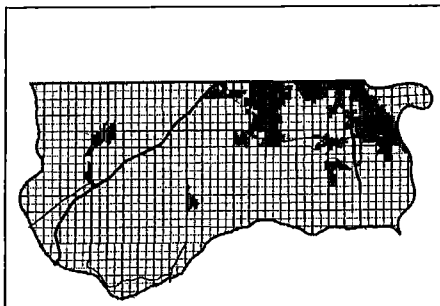
SW1/4 SEC 13 T14N R12E

1 inch = 200 feet



SARPY COUNTY
SURVEYOR'S OFFICE

SARPY COUNTY
GIS



- Legend**
- Corners
 - Quarter Sections
 - Subdivisions
 - Rights of Way
 - Lots
 - Blocks
 - Railroads
 - Street Centerline

NOTICE

This map constitutes a representation based on information provided to the Sarpy County Surveyors Office by other individuals and organizations. Therefore no representations regarding the accuracy of the size, dimensions, measurements, condition, platting, or location of the within described area are made. Should such information be required for construction, zoning, or other purposes, the services of a private surveyor and/or title search should be secured.

This Map Was Printed On:
6/23/2009