

"66" HEIGHTS

THE SUPERVISOR'S CERTIFICATE

THE SUPERVISOR'S CERTIFICATE

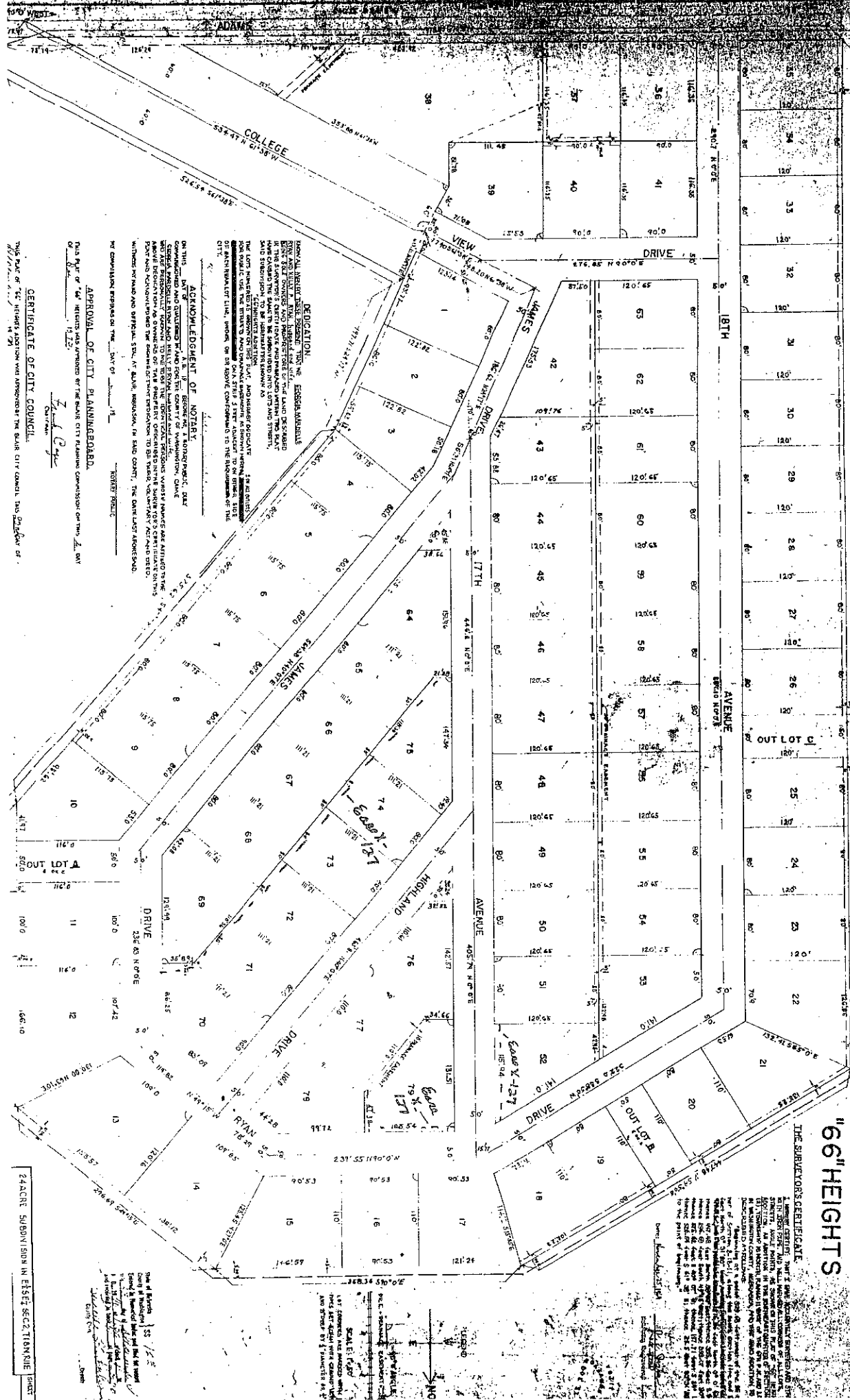
I HEREBY CERTIFY THAT THE SUBDIVISION OF THE LAND SHOWN ON THIS MAP OF THE CITY OF SAN JOSE, CALIFORNIA, IS IN ACCORDANCE WITH THE CITY AND COUNTY ZONING ORDINANCES AND THE SUBDIVISION MAP ACT, AND THAT THE SUBDIVISION OF THE LAND SHOWN ON THIS MAP OF THE CITY OF SAN JOSE, CALIFORNIA, IS IN ACCORDANCE WITH THE CITY AND COUNTY ZONING ORDINANCES AND THE SUBDIVISION MAP ACT.

IN WITNESS WHEREOF, I have hereunto set my hand and the seal of the City of San Jose, California, this 15th day of February, 1958.

City of San Jose, California

Seal of the City of San Jose, California

City Clerk



DEDICATION.
I HEREBY DEDICATE TO THE CITY OF SAN JOSE, CALIFORNIA, THE LAND SHOWN ON THIS MAP FOR THE PURPOSES OF THE CITY AND COUNTY ZONING ORDINANCES AND THE SUBDIVISION MAP ACT.

ACKNOWLEDGMENT OF NOTICE.
ON THIS 15th day of February, 1958, the following named persons, who are the owners of the land shown on this map, acknowledged to me, the City Clerk, that they had read and approved the subdivision map and the dedication of the land shown on this map for the purposes of the City and County Zoning Ordinances and the Subdivision Map Act.

APPROVAL OF CITY PLANNING BOARD.
This map of the subdivision has been approved by the Board of City Planning on this 15th day of February, 1958.

CERTIFICATE OF CITY COUNCIL.
This map of the subdivision has been approved by the Board of City Council on this 15th day of February, 1958.

24-ACRE SUBDIVISION IN EIGHT SECTIONS

City of San Jose, California

City Clerk

City Engineer