



DEED 2003239632



DEC 12 2003 13:54 P 7

Nebr Doc Stamp Tax
12.12.03
Date
\$ <u>ex4</u>
By <u>CC</u>

RECEIVED
RECEIVED

**THIS PAGE INCLUDED FOR INDEXING
PAGE DOWN FOR BALANCE OF INSTRUMENT**

deed
 FEE 112. FB New-De-38396
 BKP 4-15-11 CIO ✓ COMP LM
 DEL PU SCAN _____ FV _____
7
154
 BKP9
 12-18-03
 LM

E & A Consulting
 Group
 12001 Q St.
 Omaha NE 68137

Temp 12.4.01

E & A Consulting

THE THOMSEN MILE WEST

Being a platting of part of the East 1/2 of the SW 1/4 of Section 4, Township 15 North, Range 11 East of the 8th P.M., Douglas County, Nebraska.

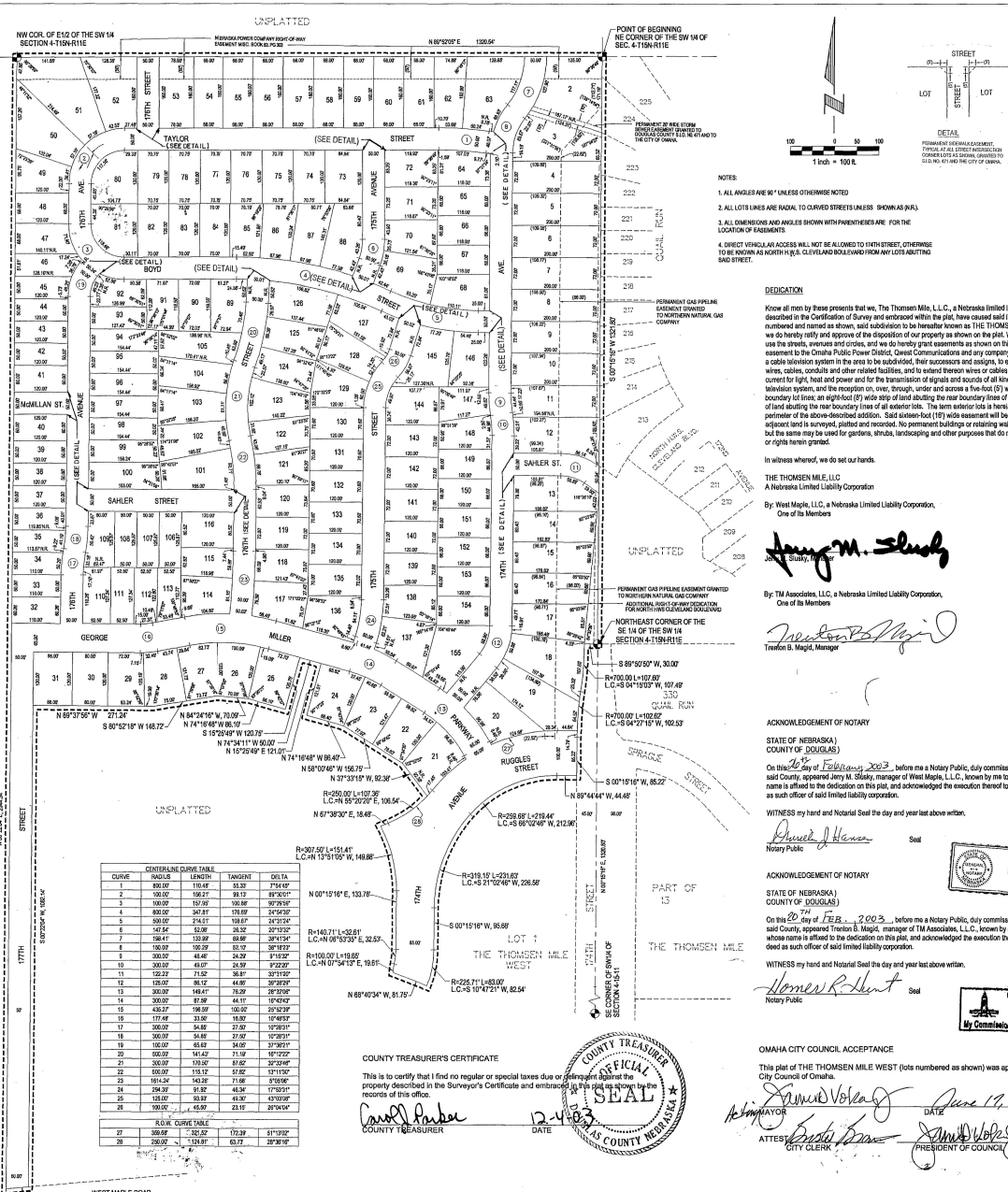
LOT 178 UNCLASIFIED



REVISIONS

No.	Date	Description
1	10/20/03	

Print No.: 030405
 Date: 1-8-03
 Drawn by: MMS
 Checked by (Eng): TRH
 Checked by (Asst):
 Checked by (City):
 Checked by (City):
 Scale: 1" = 100'



SURVEYOR'S CERTIFICATE

I hereby certify that I have made a ground survey of the subdivision described herein and that temporary monuments have been placed on the boundary of the within plat and that a bond has been furnished to the City of Omaha to ensure platting of permanent monuments and stakes at corners of lots, blocks, angle points and ends of all courses in THE THOMSEN MILE WEST (Lot 178 UNCLASIFIED) being a part of the East 1/2 of the SW 1/4 of Section 4, Township 15 North, Range 11 East of the 8th P.M., Douglas County, Nebraska, more particularly described as follows:

DEDICATION

Know all men by these presents that we, The Thomsen Mile, L.L.C., a Nebraska limited liability corporation, owners of the property described in the Certification of Survey and embraced within the plat, have caused said land to be subdivided into lots and streets to be maintained and named as shown, said subdivision to be hereinafter known as THE THOMSEN MILE WEST (lots numbered as shown), and we do hereby irrevocably and forever dedicate to the City of Omaha, Nebraska, the streets, easements and appurtenances as shown on the plat. We do hereby dedicate to the public the public use, easements and appurtenances, and we do hereby grant easements as shown on the plat. We do hereby grant a franchise to the City of Omaha Public Power District, Omaha, Nebraska, and any company which has been granted a franchise to provide a cable television system in the area to be subdivided, their successors and assigns, to erect, operate, maintain, repair and renew poles, wires, cables, conduits and other related facilities, and to extend thereon lines of cables for the carrying and transmission of electric current for light, heat and power and for the transmission of signals and sounds of all kinds including signals provided by cable television systems, and the reception, cut, over, through, under and across a line-of-sight (LOS) wide area of land including all front and side boundary lot lines, and eight-foot (8') wide strip of land abutting the rear boundary lines of all interior lots, and a sixteen-foot (16') wide strip of land abutting the rear boundary lines of all exterior lots. The term exterior lots is herein defined as those lots forming the outer perimeter of the above-described addition. Said sixteen-foot (16') wide easement will be reduced to eight-foot (8') wide when the adjacent land is surveyed, platted and recorded. No permanent buildings or retaining walls shall be placed on the said easement ways, but the same may be used for garages, sheds, landscaping and other purposes that do not interfere with the intended use or rights therein granted.

In witness whereof, we do set our hands:

THE THOMSEN MILE, L.L.C.
 Nebraska Limited Liability Corporation
 By: West Maple, L.L.C., a Nebraska Limited Liability Corporation, one of its Members
Robert Clark
 By: TM Associates, L.L.C., a Nebraska Limited Liability Corporation, one of its Members
Robert Clark
 Robert Clark 2-18-03
 ROBERT CLARK, L.S. 418

APPROVAL OF CITY ENGINEER OF OMAHA

I hereby approve this plat of THE THOMSEN MILE WEST (lots numbered as shown) as the Design Standards.

Robert Clark 1-25-3
 CITY ENGINEER DATE

I hereby certify that adequate provisions have been made for compliance with Chapter 83 of the Omaha Municipal Code.

Robert Clark 12/5/13
 CITY ENGINEER DATE

APPROVAL OF OMAHA CITY PLANNING BOARD

This plat of THE THOMSEN MILE WEST (lots numbered as shown) was approved by the City Planning Board.

John E. Hoick Feb. 5, 2003
 CHAIRMAN OF CITY PLANNING BOARD DATE

REVIEW OF OMAHA COUNTY ENGINEER

This plat of THE THOMSEN MILE WEST (lots numbered as shown) was reviewed by the office of the County Engineer of Douglas County, Nebraska.

Robert Clark 2/18/03
 COUNTY ENGINEER DATE

OMAHA CITY COUNCIL ACCEPTANCE

This plat of THE THOMSEN MILE WEST (lots numbered as shown) was approved by the City Council of Omaha.

Samuel Volz June 17, 2003
 CITY CLERK DATE

Robert Clark
 PRESIDENT OF COUNCIL

COUNTY TREASURER'S CERTIFICATE

This is to certify that I find no regular or special taxes due or payments against the property described in the Surveyor's Certificate and embraced within the plat being platted in the records of this office.

Carol Parker
 COUNTY TREASURER

R. V. H. B.
 DATE