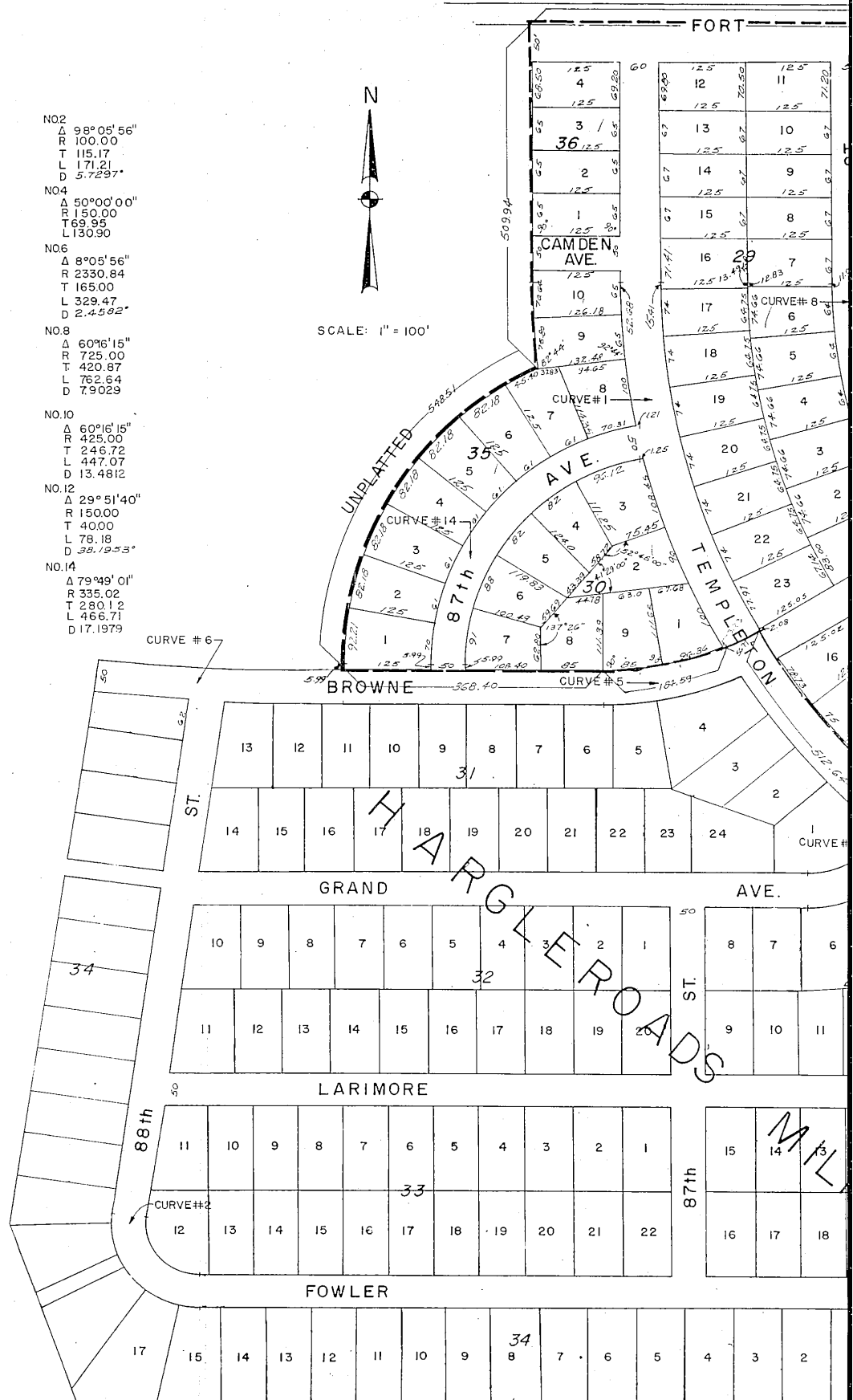


℄ CURVE DATA:

NO. 1	Δ 60°16'15"	NO. 2	Δ 98°06'56"
R 1030.00		R 100.00	
T 597.93		T 115.17	
L 1083.48		L 171.21	
D 5.5627		D 5.7297	
NO. 3	Δ 60°08'20"	NO. 4	Δ 50°00'00"
R 301.09		R 150.00	
T 174.32		T 69.95	
L 316.03		L 130.90	
NO. 5	Δ 24°04'35"	NO. 6	Δ 8°05'56"
R 464.29		R 2330.84	
T 99.01		T 165.00	
L 195.10		L 329.47	
D 12.3405		D 2.4582	
NO. 7	Δ 29°43'45"	NO. 8	Δ 60°16'15"
R 365.73		R 725.00	
T 97.07		T 420.87	
L 191.00		L 762.64	
D 15.5650		D 7.9029	
NO. 9	Δ 29°43'45"	NO. 10	Δ 60°16'15"
R 400.31		R 425.00	
T 106.25		T 246.72	
L 207.71		L 447.07	
D 14.3128		D 13.4812	
NO. 11	Δ 90°00'00"	NO. 12	Δ 29°51'40"
R 88.00		R 150.00	
T 88.00		T 40.00	
L 138.23		L 79.18	
D 65.1689		D 38.1953	
NO. 13	Δ 29°43'45"	NO. 14	Δ 79°49'01"
R 275.00		R 335.02	
T 730.00		T 280.12	
L 142.69		L 466.71	
D 20.8347		D 17.1979	



SCALE: 1" = 100'

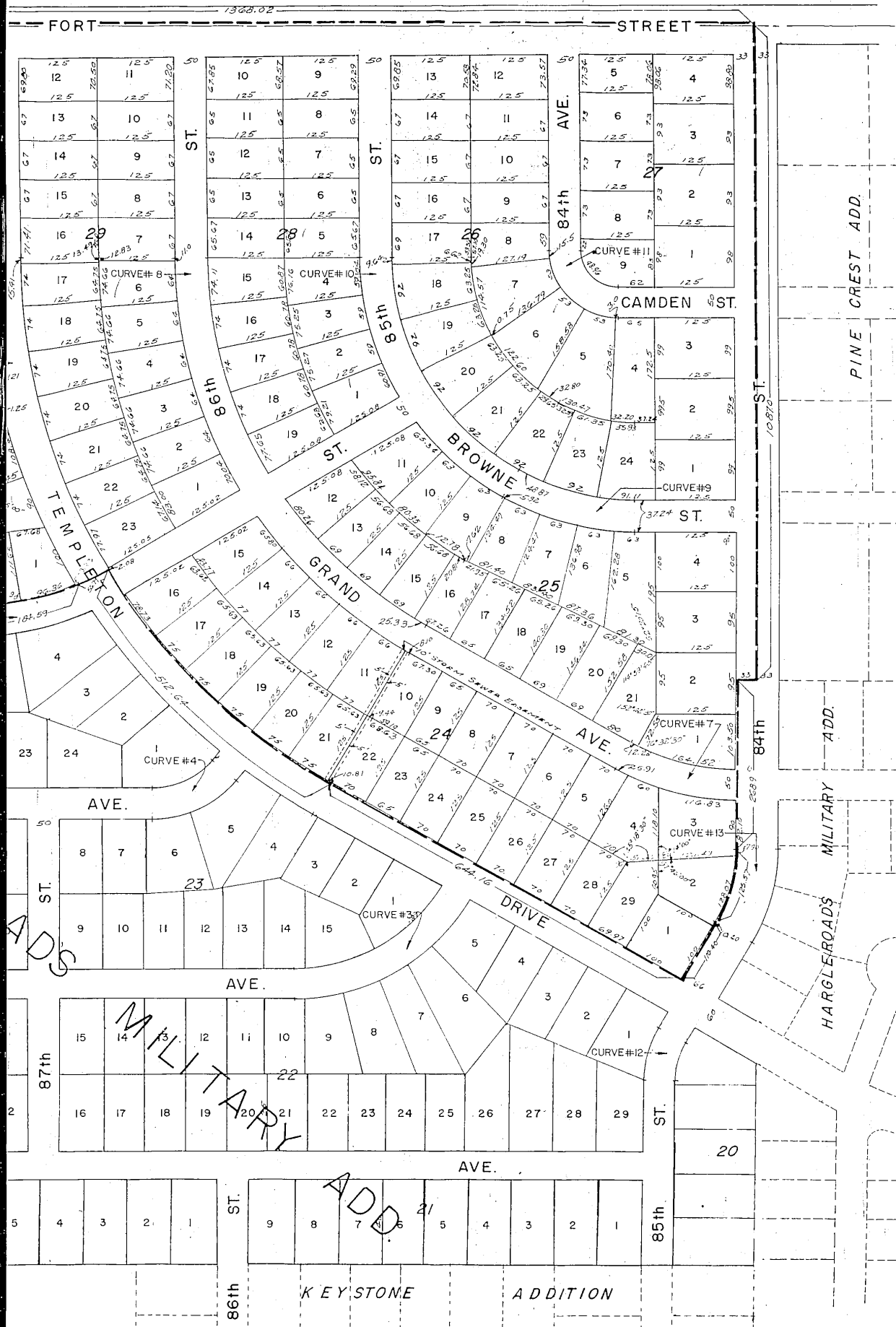


ROADS MILITARY ADDITION

BOOK 1083 PAGE 613

4 OF SEC. 3 T15N R2E OF THE 6th PM. ALL IN DOUGLAS COUNTY, NEBRASKA.

UNPLATTED



SURVEYOR'S CERTIFICATE

THIS IS TO CERTIFY THAT: I HAVE ACCURATELY SURVEYED AND STAKED WITH IRON PIPE ALL CORNERS OF ALL LOTS AND THE ENDS OF ALL CURVES IN THIS PLATTING OF BLOCKS 24, 25, 26, 27, 28, 29, 30, 35, 36, HARGLERROAD'S MILITARY ADDITION AN ADDITION TO DOUGLAS COUNTY, NEBRASKA, AND THAT SAID LOTS ARE WITHIN A TRACT OF LAND IN THE NORTH EAST QUARTER (NE 1/4) OF SECTION 3, TOWNSHIP 15 NORTH, RANGE 12 EAST OF THE 6TH PRINCIPAL MERIDIAN, DOUGLAS COUNTY, NEBRASKA MORE PARTICULARLY DESCRIBED AND BOUND AS FOLLOWS:

BEGINNING AT A POINT WHICH IS THE NORTH EAST (NE) CORNER SECTION 3, TOWNSHIP 15 NORTH RANGE 12 EAST, SAID POINT ALSO BEING CENTERLINE OF INTERSECTION OF FORT STREET AND CENTERLINE OF 84TH STREET; THENCE, ASSUMING THE EAST (E) LINE OF SECTION 3 TO BE DUE NORTH AND SOUTH, THENCE RUNNING ON A BEARING OF S 0°00' 00" W A DISTANCE OF 1097.0 FEET TO A POINT; THENCE RUNNING ON A BEARING OF S 90°00' 00" W A DISTANCE OF 33.0 FEET TO A POINT; THENCE RUNNING ON A BEARING OF S 0°00' 00" W A DISTANCE OF 268.90 FEET TO A POINT OF A CURVE OF A CURVE TO THE RIGHT HAVING A RADIUS OF 242.0 FEET; THENCE RUNNING SOUTHWESTERLY ALONG SAID CURVE A DISTANCE OF 125.57 FEET TO THE POINT OF TANGENCY OF SAID CURVE; THENCE RUNNING ON A BEARING OF S 29°43' 45" W AND RUNNING A DISTANCE OF 110.40 FEET TO A POINT; THENCE RUNNING ON A BEARING OF N 60° 16' 15" W AND RUNNING NORTHWESTERLY A DISTANCE OF 644.16 FEET TO A POINT OF A CURVE OF A CURVE TO THE RIGHT HAVING A RADIUS OF 1000.0 FEET; THENCE RUNNING NORTHWESTERLY ALONG SAID CURVE A DISTANCE OF 512.64 FEET TO A POINT, SAID POINT BEING 2.09 SOUTHEASTERLY OF THE NORTH EAST CORNER OF THE INTERSECTION OF BROWNE STREET AND TRUMPLETON DRIVE THENCE RUNNING SOUTHWESTERLY ON A BEARING OF S 65°47' 30" W AND RUNNING A DISTANCE OF 56.77 FEET TO A POINT OF A CURVE OF A CURVE HAVING A RADIUS OF 439.29 FEET; THENCE RUNNING ALONG SAID CURVE A DISTANCE OF 184.59 FEET TO THE POINT OF TANGENCY OF SAID CURVE, THENCE RUNNING ON A BEARING OF S 89°52' 05" W AND RUNNING A DISTANCE OF 369.40 FEET TO A POINT; THENCE RUNNING ON A BEARING OF N 0°07' 55" W AND RUNNING A DISTANCE OF 5.99 FEET TO A POINT OF A CURVE OF A CURVE HAVING A RADIUS 485.02 FEET; THENCE RUNNING ALONG SAID CURVE A DISTANCE 549.5 FEET TO A POINT; THENCE RUNNING ON A BEARING OF N 0°00' 00" E AND RUNNING A DISTANCE OF 509.94 FEET TO A POINT, ON THE NORTH LINE OF SAID NE 1/4, THENCE ON A BEARING OF N 89°33' 40" E AND RUNNING 1359.02 FEET TO THE POINT OF BEGINNING.

I FURTHER CERTIFY THAT THE STREETS AS PLATTED HEREON HAVE BEEN GRADED TO THE FULL WIDTH OF THE RIGHT-OF-WAY TO APPROXIMATELY THE GRADE AS APPROVED BY THE CITY ENGINEER.

IN WITNESS WHEREOF I DO HEREBY SET FORTH MY HAND AND SEAL THIS 10 DAY OF December 1959

HENNINGSON, DUEHAME RICHARDSON

Travis J. Naughton
REGISTERED LAND SURVEYOR
LS NO. 75

DEDICATION

KNOW ALL MEN BY THESE PRESENTS: THAT HARGLERROAD'S MILITARY ADDITION INC., A NEBRASKA CORPORATION OF OMAHA BEING SOLE OWNER AND PROPRIETOR OF THE LAND DESCRIBED IN THE SURVEYOR'S CERTIFICATE AND EMBRACED WITHIN THIS PLAT HAS CAUSED THE SAME TO BE SUBDIVIDED INTO LOTS, BLOCKS, STREETS AND AVENUES AS SHOWN, AND TO BE KNOWN AS HARGLERROAD'S MILITARY ADDITION, THE LOTS AND BLOCKS NUMBERED AS SHOWN, AND DOES HEREBY RATIFY AND APPROVE OF THE DISPOSITION OF ITS PROPERTY AS SHOWN ON THIS PLAT AND DOES HEREBY DEDICATE TO THE PUBLIC FOR PUBLIC USE THE STREETS, AND AVENUES AS SHOWN HEREIN RESERVING THE RIGHT, PRIVILEGE AND EASEMENT TO CONSTRUCT, OPERATE AND MAINTAIN STORM AND SANITARY SEWERS IN AND UNDER SAID STREETS AND AVENUES.

IN WITNESS WHEREOF, SAID HARGLERROAD'S MILITARY ADDITION, INC., HAS CAUSED THESE PRESENTS TO BE SIGNED BY ITS PRESIDENT, AND SECRETARY AND ITS CORPORATE SEAL TO BE HEREBY AFFIXED, IN ACCORDANCE WITH RESOLUTION OF THE BOARD OF DIRECTORS OF SAID CORPORATION THIS 21ST DAY OF DECEMBER 1959.

IN PRESENCE OF Theresa Marie Kees HARGLERROAD'S MILITARY ADDITION, INC.

ATTEST Winifred Adams
SECRETARY

BY W.B. Hargleroad Jr.
PRESIDENT

ACKNOWLEDGEMENT

STATE OF NEBRASKA SS
COUNTY OF DOUGLAS

ON THIS 21ST DAY OF DECEMBER 1959, BEFORE ME, A NOTARY PUBLIC, DULY COMMISSIONED AND QUALIFIED IN AND FOR SAID COUNTY, PERSONALLY CAME THE ABOVE W.B. HARGLERROAD, JR., PRESIDENT, AND WINIFRED ADAMS, SECRETARY OF SAID HARGLERROAD'S MILITARY ADDITION INC., WHO ARE PERSONALLY KNOWN TO ME TO BE THE SAME IDENTICAL PERSONS WHOSE NAMES ARE AFFIXED TO THE ABOVE DEDICATION ON THIS PLAT AS PRESIDENT AND SECRETARY OF SAID CORPORATION, AND THEY ACKNOWLEDGED THE SIGNING OF SAID DEDICATION TO BE THEIR VOLUNTARY ACT AND DEED AND THE VOLUNTARY ACT AND DEED OF SAID CORPORATION. WITNESS MY HAND AND OFFICIAL SEAL AT OMAHA, NEBRASKA IN SAID COUNTY, THE DATE LAST AFORESAID.

MY COMMISSION EXPIRES THE 8TH DAY OF March 1962

Theresa Marie Kees
NOTARY PUBLIC

COUNTY TREASURER'S CERTIFICATE

THIS IS TO CERTIFY THAT I FIND NO REGULAR OR SPECIAL TAXES DUE OR DELINQUENT AGAINST THE PROPERTY DESCRIBED IN THE SURVEYOR'S CERTIFICATE AND EMBRACED IN THIS PLAT AS SHOWN BY THE RECORDS OF THIS OFFICE.

DATE December 28-1959

Sam J. Howell
COUNTY TREASURER
DOUGLAS COUNTY

APPROVAL OF CITY PLANNING COMMISSION

THIS PLAT OF HARGLEROAD'S MILITARY ADDITION WAS APPROVED BY THE CITY PLANNING COMMISSION OF THE CITY OF OMAHA, NEBRASKA THIS 10 DAY OF FEBRUARY 1960

Stanley Ahmanox
CHAIRMAN OF CITY PLANNING
COMMISSION

APPROVAL OF CITY ENGINEER

I HEREBY APPROVE THIS PLAT OF HARGLEROAD'S MILITARY ADDITION THIS 8 DAY OF January 1960.

D. P. DUB
CITY ENGINEER

CITY COUNCIL ACCEPTANCE

THIS PLAT OF HARGLEROAD'S MILITARY ADDITION WAS APPROVED AND ACCEPTED BY THE CITY COUNCIL OF THE CITY OF OMAHA, NEBRASKA ON THE 8 DAY OF MARCH 1960

ATTEST M. J. Hume Jr.
CITY CLERK

W. F. Tamm
PRESIDENT OF THE CITY COUNCIL

16. ENTERED IN NUMERICAL INDEX AND RECORDED IN THE REGISTER OF DEEDS OFFICE IN DOUGLAS COUNTY, NEBRASKA
17. BY March 1960 AT 11:31 P.M. THOMAS J. O'CONNOR, REGISTER OF DEEDS
44.50